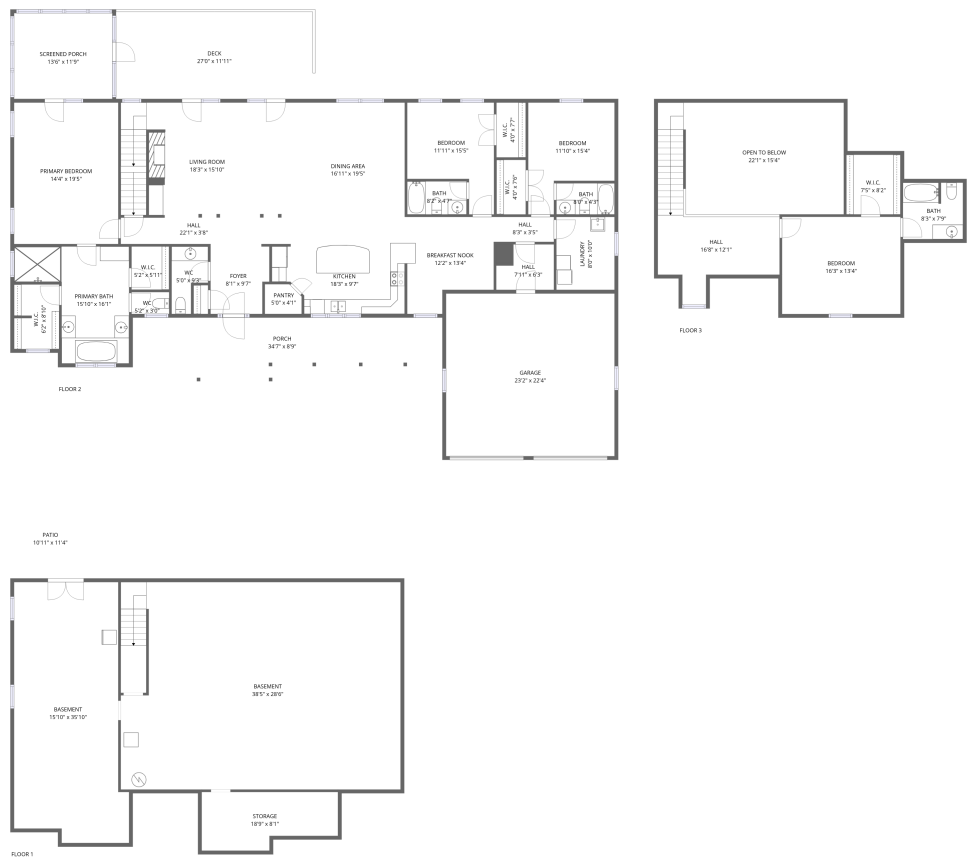


Home report

6540 Hidden Falls, Salem, Roanoke County, Virginia, United States, 24153



Total Area: 2983 sq. ft

Below Ground: 0 sq. ft, Floor 2: 2416 sq. ft, Floor 3: 567 sq. ft

Excluded: Storage 138 sq. ft, Basement 1597 sq. ft, Patio 125 sq. ft, Undefined 23 sq. ft, Garage 518 sq. ft, Screened porch 160 sq. ft, Porch 256 sq. ft, Deck 324 sq. ft, Open to below 335 sq. ft, Walls: 344 sq. ft

Property summary

**3**
Floors

**4**
Bedrooms

**4**
Bathrooms

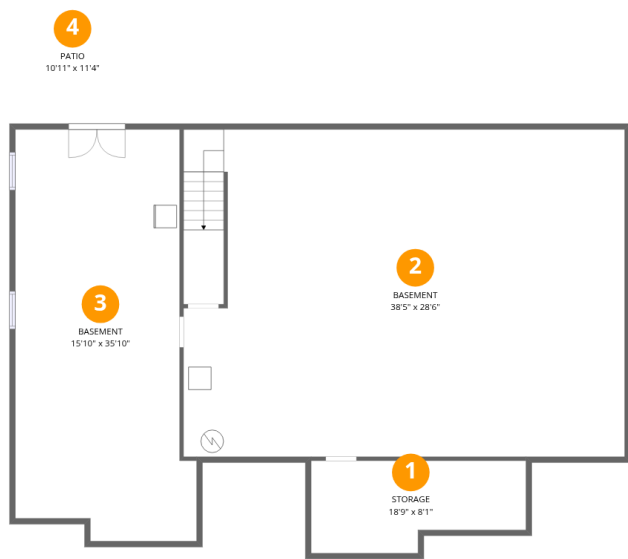
Home report

6540 Hidden Falls, Salem, Roanoke County, Virginia, United States, 24153

 **1**
Half baths

 **1**
Garages

6540 Hidden Falls, Salem, Roanoke County, Virginia, United States, 24153



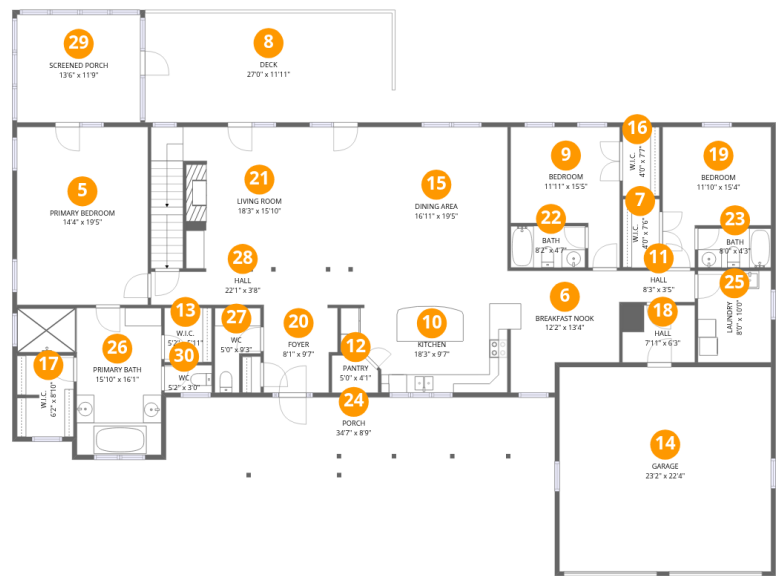
Room dimensions

Floor 1 Below ground Total:0sqft Excluded: 1883sqft

#		Max Dimensions	sqft	Included
1	Storage	18'9" x 8'1"	132 sq. ft	No
2	Basement	38'5" x 28'6"	1069 sq. ft	No
3	Basement	15'10" x 35'10"	512 sq. ft	No
4	Patio	10'11" x 11'4"	125 sq. ft	No

Home report

6540 Hidden Falls, Salem, Roanoke County, Virginia, United States, 24153



Room dimensions

Floor 2 Total:2416sqft Excluded: 1258sqft

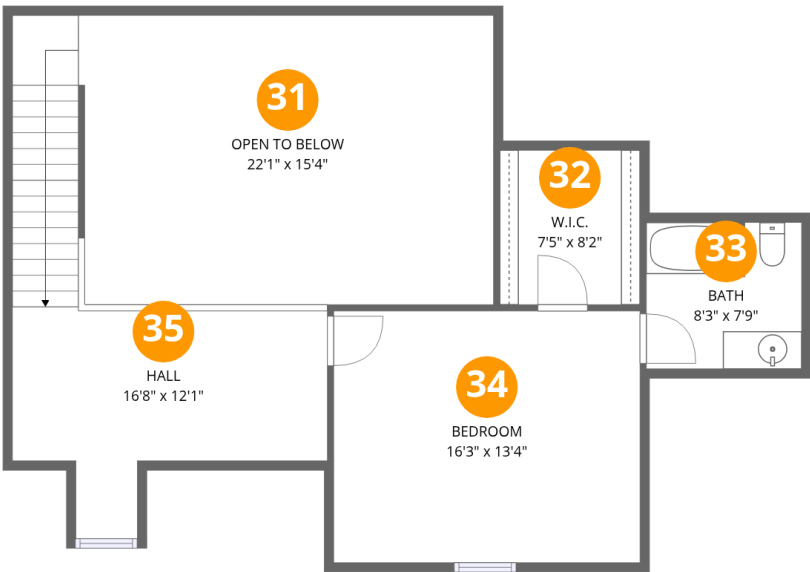
#		Max Dimensions	sqft	Included
5	Primary Bedroom	14'4" x 19'5"	279 sq. ft	Yes
6	Breakfast Nook	12'2" x 13'4"	138 sq. ft	Yes
7	W.I.C.	4'0" x 7'6"	30 sq. ft	Yes
8	Deck	27'0" x 11'11"	324 sq. ft	No
9	Bedroom	11'11" x 15'5"	142 sq. ft	Yes
10	Kitchen	18'3" x 9'7"	157 sq. ft	Yes
11	Hall	8'3" x 3'5"	28 sq. ft	Yes
12	Pantry	5'0" x 4'1"	19 sq. ft	Yes
13	W.I.C.	5'2" x 5'11"	31 sq. ft	Yes
14	Garage	23'2" x 22'4"	518 sq. ft	No
15	Dining Area	16'11" x 19'5"	330 sq. ft	Yes

Home report

6540 Hidden Falls, Salem, Roanoke County, Virginia, United States, 24153

#		Max Dimensions	sqft	Included
16	W.I.C.	4'0" x 7'7"	30 sq. ft	Yes
17	W.I.C.	6'2" x 8'10"	54 sq. ft	Yes
18	Hall	7'11" x 6'3"	43 sq. ft	Yes
19	Bedroom	11'10" x 15'4"	144 sq. ft	Yes
20	Foyer	8'1" x 9'7"	73 sq. ft	Yes
21	Living Room	18'3" x 15'10"	343 sq. ft	Yes
22	Bath	8'2" x 4'7"	37 sq. ft	Yes
23	Bath	8'0" x 4'3"	34 sq. ft	Yes
24	Porch	34'7" x 8'9"	256 sq. ft	No
25	Laundry	8'0" x 10'0"	80 sq. ft	Yes
26	Primary Bath	15'10" x 16'1"	181 sq. ft	Yes
27	WC	5'0" x 9'3"	36 sq. ft	Yes
28	Hall	22'1" x 3'8"	80 sq. ft	Yes
29	Screened Porch	13'6" x 11'9"	160 sq. ft	No
30	WC	5'2" x 3'0"	16 sq. ft	Yes

6540 Hidden Falls, Salem, Roanoke County, Virginia, United States, 24153



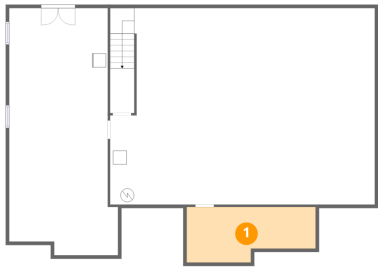
Room dimensions

Floor 3 Total:567sqft Excluded: 335sqft

#		Max Dimensions	sqft	Included
31	Open To Below	22'1" x 15'4"	335 sq. ft	No
32	W.I.C.	7'5" x 8'2"	61 sq. ft	Yes
33	Bath	8'3" x 7'9"	63 sq. ft	Yes
34	Bedroom	16'3" x 13'4"	218 sq. ft	Yes
35	Hall	16'8" x 12'1"	210 sq. ft	Yes

6540 Hidden Falls, Salem, Roanoke County, Virginia, United States, 24153

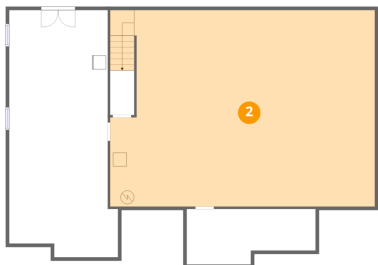
1 Floor 1 - Storage



Max Dimensions: 18'9" x 8'1"
Calculated Area: 132 sq. ft
Included: No

Heated: No
Finished: No
Enclosed: No
Contiguous: Yes
Permitted: Yes
Wet space: No
Addition: No
Conversion: No

2 Floor 1 - Basement



Max Dimensions: 38'5" x 28'6"
Calculated Area: 1069 sq. ft
Included: No

Heated: Yes
Finished: No
Enclosed: Yes
Contiguous: Yes
Permitted: Yes
Wet space: No
Addition: No
Conversion: No

6540 Hidden Falls, Salem, Roanoke County, Virginia, United States, 24153

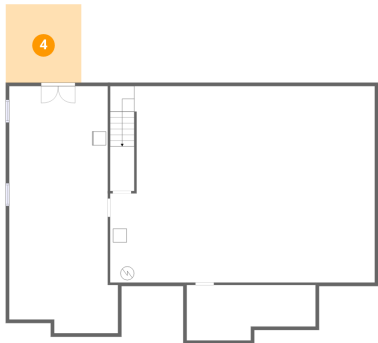
3 Floor 1 - Basement



Max Dimensions: 15'10" x 35'10"
Calculated Area: 512 sq. ft
Included: No

Heated: Yes
Finished: No
Enclosed: Yes
Contiguous: Yes
Permitted: Yes
Wet space: No
Addition: No
Conversion: No

4 Floor 1 - Patio



Max Dimensions: 10'11" x 11'4"
Calculated Area: 125 sq. ft
Included: No

Heated: No
Finished: No
Enclosed: No
Contiguous: Yes
Permitted: Yes
Wet space: No
Addition: No
Conversion: No

5 Floor 2 - Primary Bedroom



Max Dimensions: 14'4" x 19'5"
Calculated Area: 279 sq. ft
Included: Yes

Heated: Yes
Finished: Yes
Enclosed: Yes
Contiguous: Yes
Permitted: Yes
Wet space: No
Addition: No
Conversion: No

6540 Hidden Falls, Salem, Roanoke County, Virginia, United States, 24153

6 Floor 2 - Breakfast Nook



Max Dimensions: 12'2" x 13'4"
Calculated Area: 138 sq. ft
Included: Yes

Heated: Yes
Finished: Yes
Enclosed: Yes
Contiguous: Yes
Permitted: Yes
Wet space: No
Addition: No
Conversion: No

7 Floor 2 - W.I.C.



Max Dimensions: 4'0" x 7'6"
Calculated Area: 30 sq. ft
Included: Yes

Heated: Yes
Finished: Yes
Enclosed: Yes
Contiguous: Yes
Permitted: Yes
Wet space: No
Addition: No
Conversion: No

8 Floor 2 - Deck



Max Dimensions: 27'0" x 11'11"
Calculated Area: 324 sq. ft
Included: No

Heated: No
Finished: No
Enclosed: No
Contiguous: Yes
Permitted: Yes
Wet space: No
Addition: No
Conversion: No

6540 Hidden Falls, Salem, Roanoke County, Virginia, United States, 24153

9 Floor 2 - Bedroom



Max Dimensions: 11'11" x 15'5"
Calculated Area: 142 sq. ft
Included: Yes

Heated: Yes
Finished: Yes
Enclosed: Yes
Contiguous: Yes
Permitted: Yes
Wet space: No
Addition: No
Conversion: No

10 Floor 2 - Kitchen



Max Dimensions: 18'3" x 9'7"
Calculated Area: 157 sq. ft
Included: Yes

Heated: Yes
Finished: Yes
Enclosed: Yes
Contiguous: Yes
Permitted: Yes
Wet space: No
Addition: No
Conversion: No

11 Floor 2 - Hall



Max Dimensions: 8'3" x 3'5"
Calculated Area: 28 sq. ft
Included: Yes

Heated: Yes
Finished: Yes
Enclosed: Yes
Contiguous: Yes
Permitted: Yes
Wet space: No
Addition: No
Conversion: No

6540 Hidden Falls, Salem, Roanoke County, Virginia, United States, 24153

12 Floor 2 - Pantry



Max Dimensions: 5'0" x 4'1"
Calculated Area: 19 sq. ft
Included: Yes

Heated: Yes
Finished: Yes
Enclosed: Yes
Contiguous: Yes
Permitted: Yes
Wet space: No
Addition: No
Conversion: No

13 Floor 2 - W.I.C.



Max Dimensions: 5'2" x 5'11"
Calculated Area: 31 sq. ft
Included: Yes

Heated: Yes
Finished: Yes
Enclosed: Yes
Contiguous: Yes
Permitted: Yes
Wet space: No
Addition: No
Conversion: No

14 Floor 2 - Garage

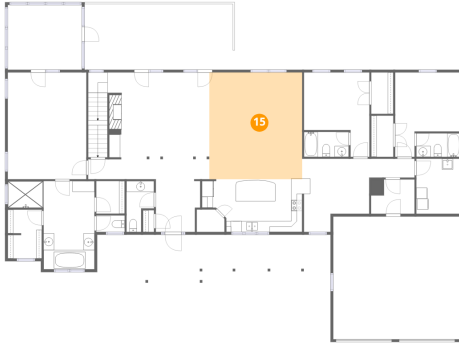


Max Dimensions: 23'2" x 22'4"
Calculated Area: 518 sq. ft
Included: No

Heated: No
Finished: No
Enclosed: Yes
Contiguous: Yes
Permitted: Yes
Wet space: No
Addition: No
Conversion: No

6540 Hidden Falls, Salem, Roanoke County, Virginia, United States, 24153

15 Floor 2 - Dining Area



Max Dimensions: 16'11" x 19'5"
Calculated Area: 330 sq. ft
Included: Yes

Heated: Yes
Finished: Yes
Enclosed: Yes
Contiguous: Yes
Permitted: Yes
Wet space: No
Addition: No
Conversion: No

16 Floor 2 - W.I.C.



Max Dimensions: 4'0" x 7'7"
Calculated Area: 30 sq. ft
Included: Yes

Heated: Yes
Finished: Yes
Enclosed: Yes
Contiguous: Yes
Permitted: Yes
Wet space: No
Addition: No
Conversion: No

17 Floor 2 - W.I.C.



Max Dimensions: 6'2" x 8'10"
Calculated Area: 54 sq. ft
Included: Yes

Heated: Yes
Finished: Yes
Enclosed: Yes
Contiguous: Yes
Permitted: Yes
Wet space: No
Addition: No
Conversion: No

6540 Hidden Falls, Salem, Roanoke County, Virginia, United States, 24153

18 Floor 2 - Hall



Max Dimensions: 7'11" x 6'3"
Calculated Area: 43 sq. ft
Included: Yes

Heated: Yes
Finished: Yes
Enclosed: Yes
Contiguous: Yes
Permitted: Yes
Wet space: No
Addition: No
Conversion: No

19 Floor 2 - Bedroom



Max Dimensions: 11'10" x 15'4"
Calculated Area: 144 sq. ft
Included: Yes

Heated: Yes
Finished: Yes
Enclosed: Yes
Contiguous: Yes
Permitted: Yes
Wet space: No
Addition: No
Conversion: No

20 Floor 2 - Foyer



Max Dimensions: 8'1" x 9'7"
Calculated Area: 73 sq. ft
Included: Yes

Heated: Yes
Finished: Yes
Enclosed: Yes
Contiguous: Yes
Permitted: Yes
Wet space: No
Addition: No
Conversion: No

6540 Hidden Falls, Salem, Roanoke County, Virginia, United States, 24153

21 Floor 2 - Living Room



Max Dimensions: 18'3" x 15'10"
Calculated Area: 343 sq. ft
Included: Yes

Heated: Yes
Finished: Yes
Enclosed: Yes
Contiguous: Yes
Permitted: Yes
Wet space: No
Addition: No
Conversion: No

22 Floor 2 - Bath



Max Dimensions: 8'2" x 4'7"
Calculated Area: 37 sq. ft
Included: Yes

Heated: Yes
Finished: Yes
Enclosed: Yes
Contiguous: Yes
Permitted: Yes
Wet space: Yes
Addition: No
Conversion: No

23 Floor 2 - Bath



Max Dimensions: 8'0" x 4'3"
Calculated Area: 34 sq. ft
Included: Yes

Heated: Yes
Finished: Yes
Enclosed: Yes
Contiguous: Yes
Permitted: Yes
Wet space: Yes
Addition: No
Conversion: No

6540 Hidden Falls, Salem, Roanoke County, Virginia, United States, 24153

24 Floor 2 - Porch



Max Dimensions: 34'7" x 8'9"
Calculated Area: 256 sq. ft
Included: No

Heated: No
Finished: No
Enclosed: No
Contiguous: Yes
Permitted: Yes
Wet space: No
Addition: No
Conversion: No

25 Floor 2 - Laundry



Max Dimensions: 8'0" x 10'0"
Calculated Area: 80 sq. ft
Included: Yes

Heated: Yes
Finished: Yes
Enclosed: Yes
Contiguous: Yes
Permitted: Yes
Wet space: No
Addition: No
Conversion: No

26 Floor 2 - Primary Bath



Max Dimensions: 15'10" x 16'1"
Calculated Area: 181 sq. ft
Included: Yes

Heated: Yes
Finished: Yes
Enclosed: Yes
Contiguous: Yes
Permitted: Yes
Wet space: Yes
Addition: No
Conversion: No

6540 Hidden Falls, Salem, Roanoke County, Virginia, United States, 24153

27 Floor 2 - WC



Max Dimensions: 5'0" x 9'3"
Calculated Area: 36 sq. ft
Included: Yes

Heated: Yes
Finished: Yes
Enclosed: Yes
Contiguous: Yes
Permitted: Yes
Wet space: Yes
Addition: No
Conversion: No

28 Floor 2 - Hall



Max Dimensions: 22'1" x 3'8"
Calculated Area: 80 sq. ft
Included: Yes

Heated: Yes
Finished: Yes
Enclosed: Yes
Contiguous: Yes
Permitted: Yes
Wet space: No
Addition: No
Conversion: No

29 Floor 2 - Screened Porch



Max Dimensions: 13'6" x 11'9"
Calculated Area: 160 sq. ft
Included: No

Heated: No
Finished: No
Enclosed: No
Contiguous: Yes
Permitted: Yes
Wet space: No
Addition: No
Conversion: No

6540 Hidden Falls, Salem, Roanoke County, Virginia, United States, 24153

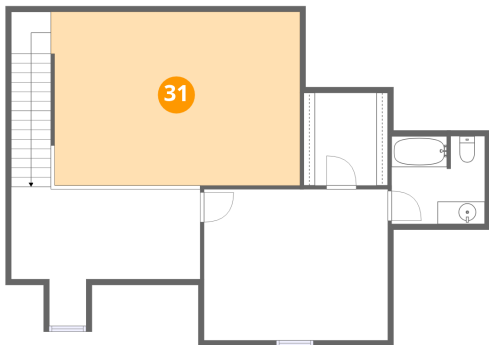
30 Floor 2 - WC



Max Dimensions: 5'2" x 3'0"
Calculated Area: 16 sq. ft
Included: Yes

Heated: Yes
Finished: Yes
Enclosed: Yes
Contiguous: Yes
Permitted: Yes
Wet space: Yes
Addition: No
Conversion: No

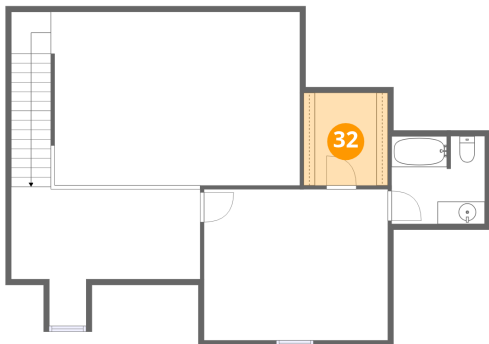
31 Floor 3 - Open To Below



Max Dimensions: 22'1" x 15'4"
Calculated Area: 335 sq. ft
Included: No

Heated: No
Finished: No
Enclosed: No
Contiguous: Yes
Permitted: No
Wet space: No
Addition: No
Conversion: No

32 Floor 3 - W.I.C.

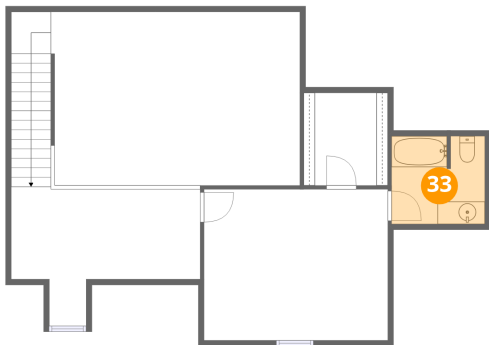


Max Dimensions: 7'5" x 8'2"
Calculated Area: 61 sq. ft
Included: Yes

Heated: Yes
Finished: Yes
Enclosed: Yes
Contiguous: Yes
Permitted: Yes
Wet space: No
Addition: No
Conversion: No

6540 Hidden Falls, Salem, Roanoke County, Virginia, United States, 24153

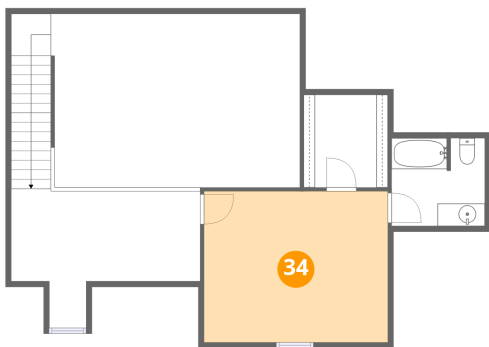
33 Floor 3 - Bath



Max Dimensions: 8'3" x 7'9"
Calculated Area: 63 sq. ft
Included: Yes

Heated: Yes
Finished: Yes
Enclosed: Yes
Contiguous: Yes
Permitted: Yes
Wet space: Yes
Addition: No
Conversion: No

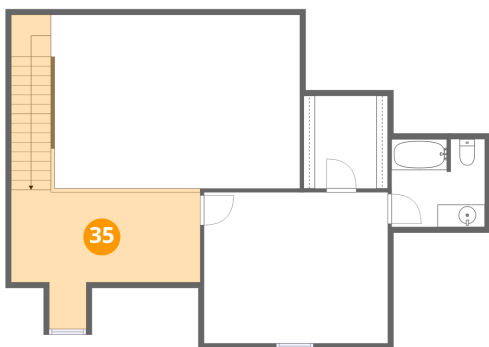
34 Floor 3 - Bedroom



Max Dimensions: 16'3" x 13'4"
Calculated Area: 218 sq. ft
Included: Yes

Heated: Yes
Finished: Yes
Enclosed: Yes
Contiguous: Yes
Permitted: Yes
Wet space: No
Addition: No
Conversion: No

35 Floor 3 - Hall



Max Dimensions: 16'8" x 12'1"
Calculated Area: 210 sq. ft
Included: Yes

Heated: Yes
Finished: Yes
Enclosed: Yes
Contiguous: Yes
Permitted: Yes
Wet space: No
Addition: No
Conversion: No