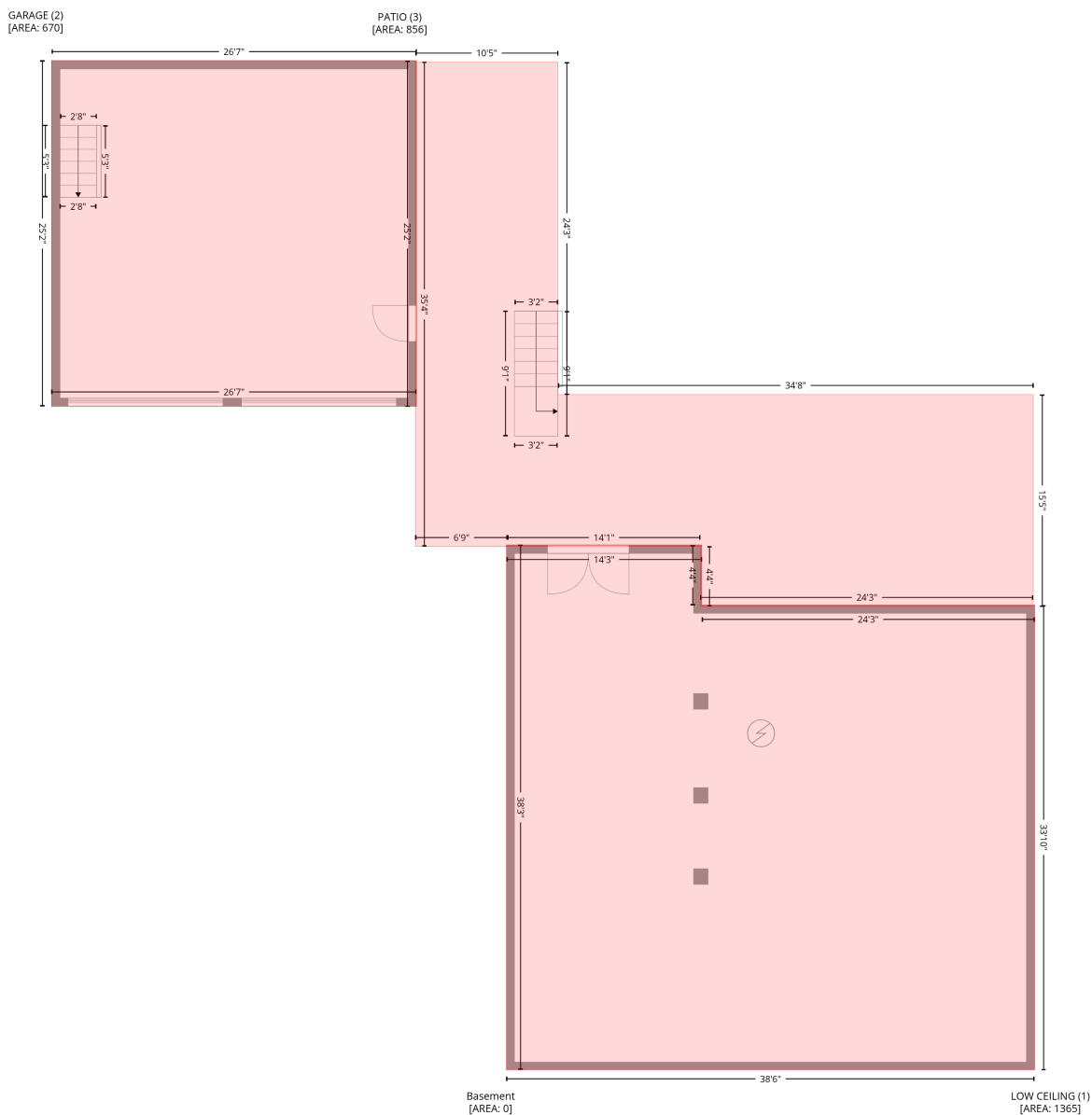


706 Forrest Heights Drive Southeast, Bluewood Estates, Huntsville, Madison County, Alabama, United States, 35802

Gross Living Area: 2659 sq. ft

Level 1 - Below Grade



Space	Area (sq. ft)	Calculation
LOW CEILING (Non-living area)	1365	Coordinate Polygon Area Algorithm using inches $-((647.7 + 647.7) * (467.3 - 519.7) + (647.7 + 938.7) * (519.7 - 519.7) + (938.7 + 938.7) * (519.7 - 926.2) + (938.7 + 477) * (926.2 - 926.2) + (477 + 477) * (926.2 - 467.3) + (477 + 647.7) * (467.3 - 467.3)) * 0.5 * 0.00694$
GARAGE (Non-living area)	670	$-((398.4 + 398.4) * (43.7 - 346) + (398.4 + 79.3) * (346 - 346) + (79.3 + 79.3) * (346 - 43.7) + (79.3 + 398.4) * (43.7 - 43.7)) * 0.5 * 0.00694$

706 Forrest Heights Drive Southeast, Bluewood Estates, Huntsville, Madison County, Alabama, United States, 35802

Gross Living Area: 2659 sq. ft

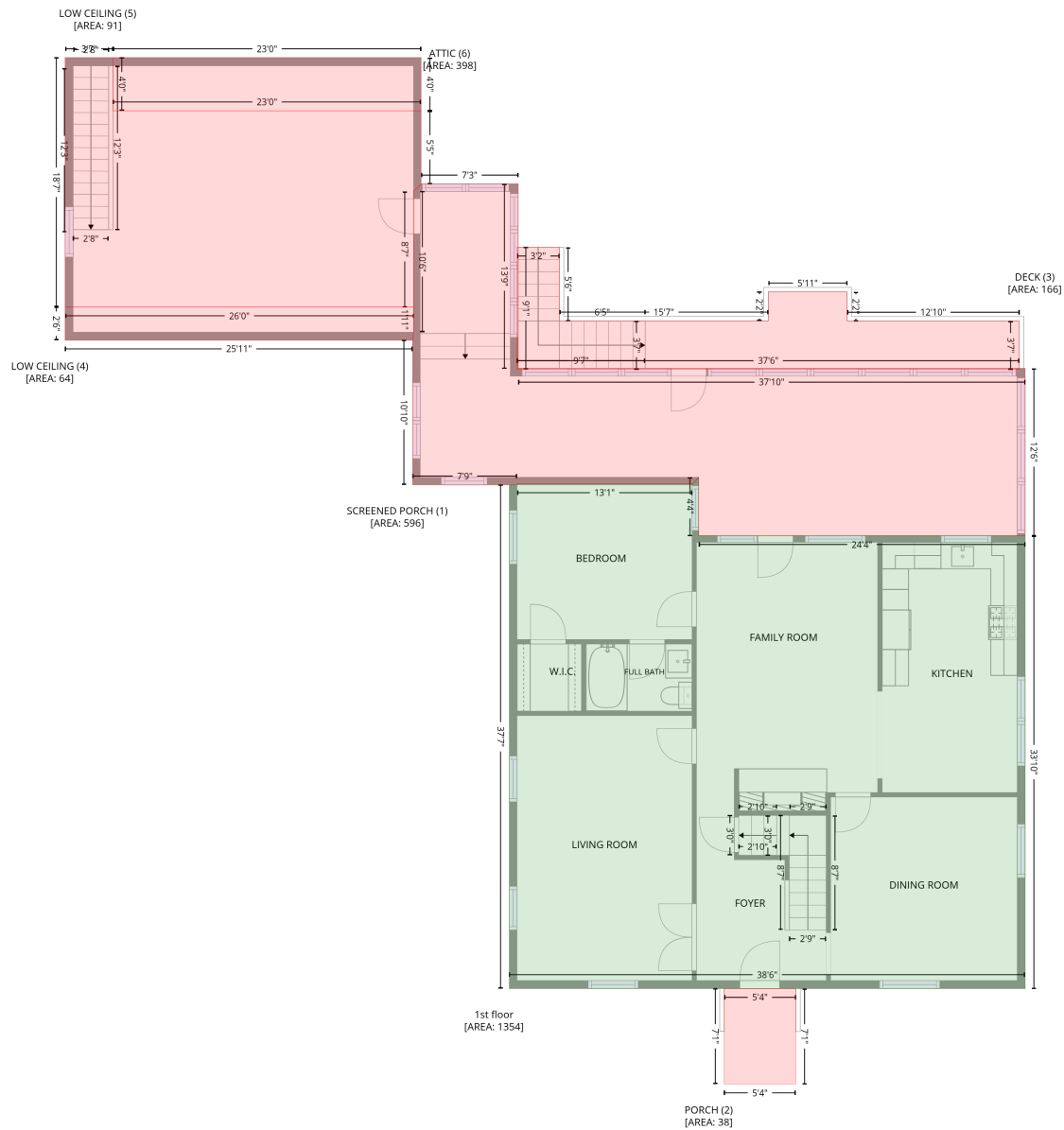
Level 1 - Below Grade

Space	Area (sq. ft)	Calculation <small>Coordinate Polygon Area Algorithm using inches</small>
PATIO (Non-living area)	856	$-((522 + 522) * (45 - 335.6) + (522 + 937.6) * (335.6 - 335.6) + (937.6 + 937.6) * (335.6 - 521) + (937.6 + 646.7) * (521 - 521) + (646.7 + 646.7) * (521 - 468.6) + (646.7 + 478.1) * (468.6 - 468.6) + (478.1 + 397.4) * (468.6 - 468.6) + (397.4 + 397.4) * (468.6 - 45) + (397.4 + 522) * (45 - 45)) * 0.5 * 0.00694$

706 Forrest Heights Drive Southeast, Bluewood Estates, Huntsville, Madison County, Alabama, United States, 35802

Gross Living Area: 2659 sq. ft

Level 2



Space	Area (sq. ft)	Calculation
1st floor (Living area)	1354	Coordinate Polygon Area Algorithm using inches $-((646.7 + 646.7) * (468.6 - 521) + (646.7 + 938.7) * (521 - 521) + (938.7 + 938.7) * (521 - 926.5) + (938.7 + 477.2) * (926.5 - 926.5) + (477.2 + 477.2) * (926.5 - 475.4) + (477.2 + 484.1) * (475.4 - 475.4) + (484.1 + 484.1) * (475.4 - 474.6) + (484.1 + 640.7) * (474.6 - 474.6) + (640.7 + 640.7) * (474.6 - 475.4) + (640.7 + 646.7) * (475.4 - 468.6)) * 0.5 * 0.00694$

706 Forrest Heights Drive Southeast, Bluewood Estates, Huntsville, Madison County, Alabama, United States, 35802

Gross Living Area: 2659 sq. ft

Level 2

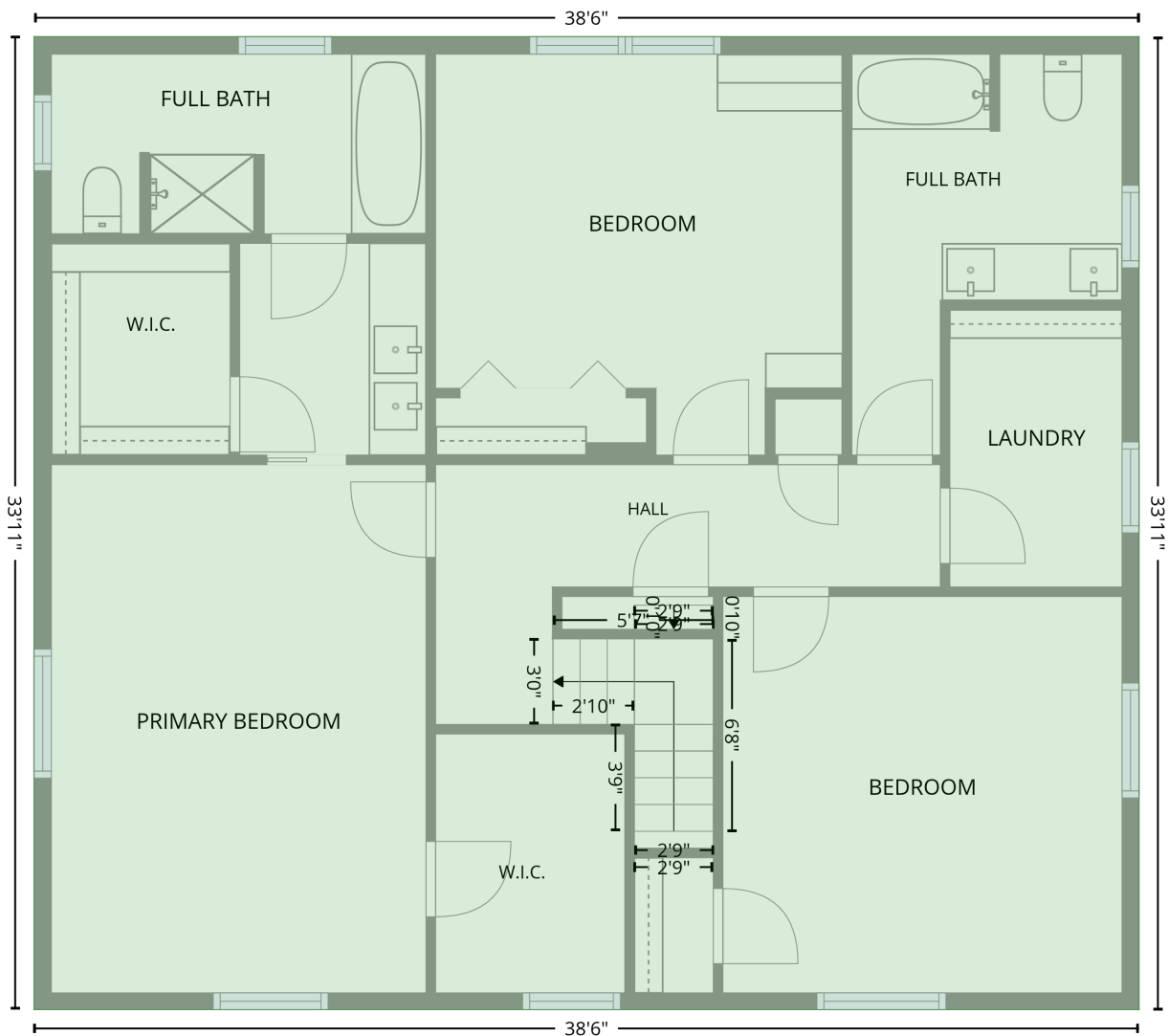
Space	Area (sq. ft)	Calculation <small>Coordinate Polygon Area Algorithm using inches</small>
SCREENED PORCH (Non-living area)	596	$-\left((485.1 + 485.1) * (205.9 - 371.1) + (485.1 + 938.7) * (371.1 - 371.1) + (938.7 + 938.7) * (371.1 - 521) + (938.7 + 646.7) * (521 - 521) + (646.7 + 646.7) * (521 - 468.6) + (646.7 + 640.7) * (468.6 - 475.4) + (640.7 + 640.7) * (475.4 - 474.6) + (640.7 + 484.1) * (474.6 - 474.6) + (484.1 + 484.1) * (474.6 - 475.4) + (484.1 + 390.7) * (475.4 - 475.4) + (390.7 + 390.7) * (475.4 - 345.8) + (390.7 + 391.4) * (345.8 - 338.7) + (391.4 + 391.4) * (338.7 - 212.8) + (391.4 + 398.2) * (212.8 - 205.9) + (398.2 + 485.1) * (205.9 - 205.9)) * 0.5 * 0.00694$
PORCH (Non-living area)	38	$-\left((733.5 + 733.5) * (926.5 - 1012) + (733.5 + 669.3) * (1012 - 1012) + (669.3 + 669.3) * (1012 - 926.5) + (669.3 + 733.5) * (926.5 - 926.5)) * 0.5 * 0.00694$
DECK (Non-living area)	166	$-\left((521.9 + 521.9) * (262.6 - 328.6) + (521.9 + 708.9) * (328.6 - 328.6) + (708.9 + 708.9) * (328.6 - 302.5) + (708.9 + 779.4) * (302.5 - 302.5) + (779.4 + 779.4) * (302.5 - 328.7) + (779.4 + 933.6) * (328.7 - 328.7) + (933.6 + 933.6) * (328.7 - 372.1) + (933.6 + 484.1) * (372.1 - 372.1) + (484.1 + 484.1) * (372.1 - 262.6) + (484.1 + 521.9) * (262.6 - 262.6)) * 0.5 * 0.00694$
LOW CEILING (Non-living area)	64	$-\left((391.4 + 391.4) * (316.2 - 338.7) + (391.4 + 390.7) * (338.7 - 345.8) + (390.7 + 79.7) * (345.8 - 345.8) + (79.7 + 79.7) * (345.8 - 316.2) + (79.7 + 391.4) * (316.2 - 316.2)) * 0.5 * 0.00694$
LOW CEILING (Non-living area)	91	$-\left((398.2 + 398.2) * (92.8 - 140.4) + (398.2 + 122.5) * (140.4 - 140.4) + (122.5 + 122.5) * (140.4 - 92.8) + (122.5 + 398.2) * (92.8 - 92.8)) * 0.5 * 0.00694$
ATTIC (Non-living area)	398	$-\left((122.5 + 122.5) * (92.8 - 140.4) + (122.5 + 398.2) * (140.4 - 140.4) + (398.2 + 398.2) * (140.4 - 205.9) + (398.2 + 391.4) * (205.9 - 212.8) + (391.4 + 391.4) * (212.8 - 316.2) + (391.4 + 79.7) * (316.2 - 316.2) + (79.7 + 79.7) * (316.2 - 92.8) + (79.7 + 122.5) * (92.8 - 92.8)) * 0.5 * 0.00694$

706 Forrest Heights Drive Southeast, Bluewood Estates, Huntsville, Madison County, Alabama, United States, 35802

Gross Living Area: 2659 sq. ft

Level 3

2nd floor
[AREA: 1305]

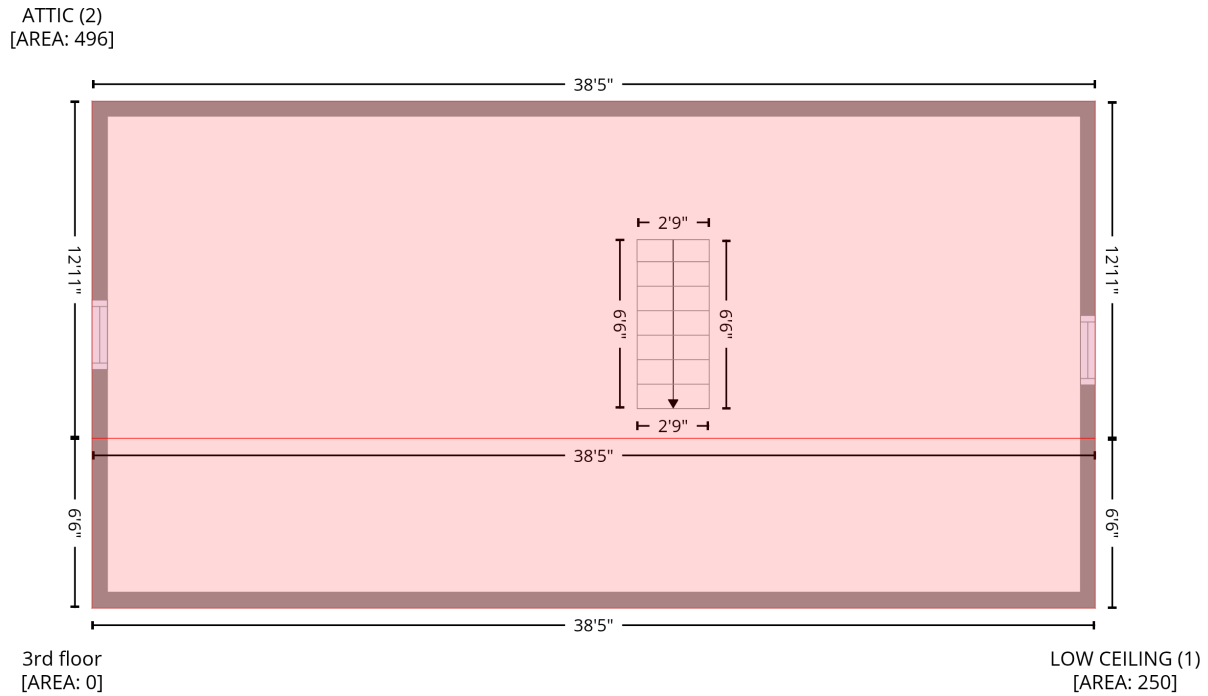


Space	Area (sq. ft)	Calculation <small>Coordinate Polygon Area Algorithm using inches</small>
2nd floor (Living area)	1305	$-\left((938.7 + 938.7) * (519.6 - 926.4) + (938.7 + 476.8) * (926.4 - 926.4) + (476.8 + 476.8) * (926.4 - 519.6) + (476.8 + 938.7) * (519.6 - 519.6)\right) * 0.5 * 0.00694$

706 Forrest Heights Drive Southeast, Bluewood Estates, Huntsville, Madison County, Alabama, United States, 35802

Gross Living Area: 2659 sq. ft

Level 4



Space	Area (sq. ft)	Calculation <small>Coordinate Polygon Area Algorithm using inches</small>
LOW CEILING (Non-living area)	250	$-((938.4 + 938.4) * (848.6 - 926.7) + (938.4 + 477) * (926.7 - 926.7) + (477 + 477) * (926.7 - 848.6) + (477 + 938.4) * (848.6 - 848.6)) * 0.5 * 0.00694$
ATTIC (Non-living area)	496	$-((938.4 + 938.4) * (693.7 - 848.6) + (938.4 + 477) * (848.6 - 848.6) + (477 + 477) * (848.6 - 693.7) + (477 + 938.4) * (693.7 - 693.7)) * 0.5 * 0.00694$