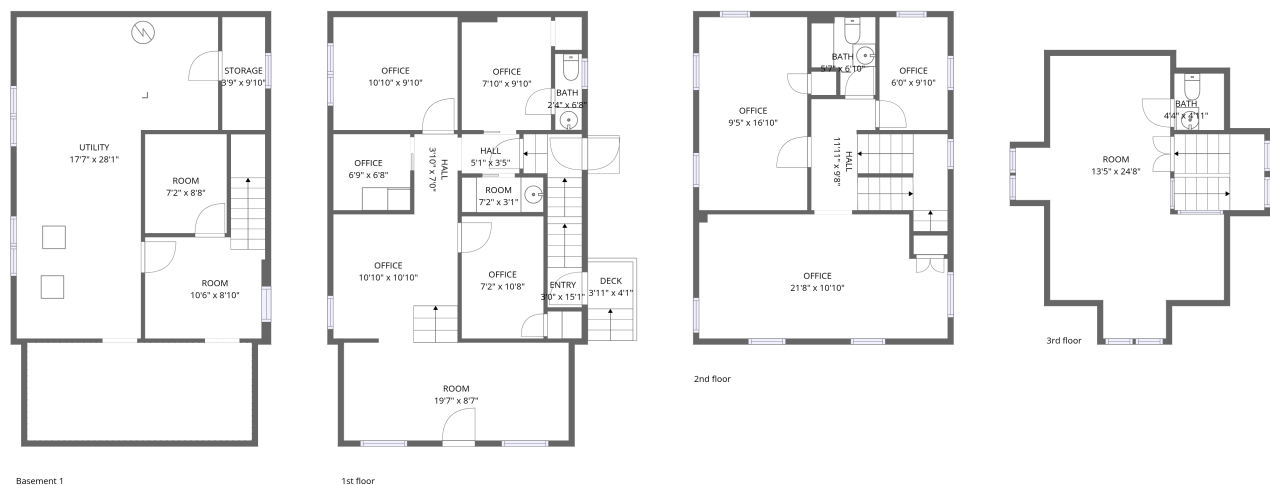


Home data report

129 North Washington Street, Butler, Butler County,
Pennsylvania, United States, 16001




Total Area: 1766 sq. ft

Below Ground: 73 sq. ft, 1st Floor: 783 sq. ft, 2nd Floor: 608 sq. ft, 3rd Floor: 302 sq. ft
Excluded: Utility 381 sq. ft, Storage 38 sq. ft, Low ceiling 240 sq. ft, Room 118 sq. ft, Deck 27 sq. ft, Walls: 218 sq. ft

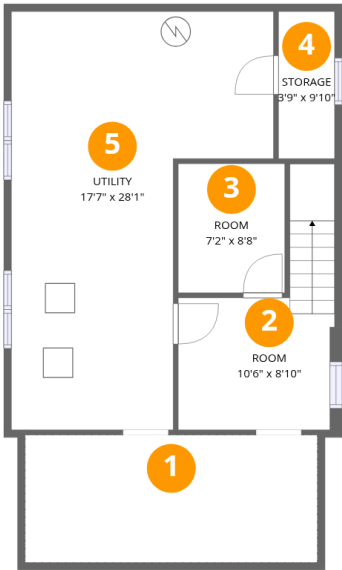
Property summary

 **4** Floors

 **3** Half baths

Home data report

129 North Washington Street, Butler, Butler County,
Pennsylvania, United States, 16001



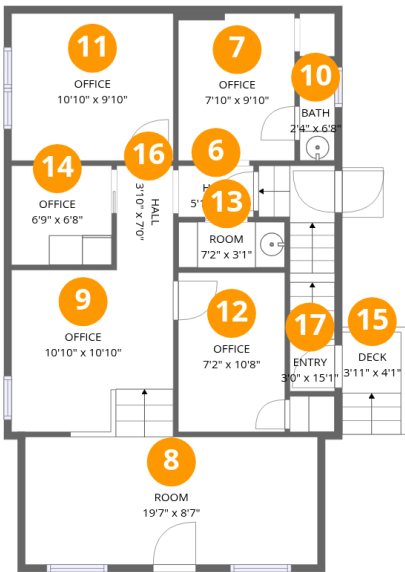
Room dimensions

Floor 1 Below grade Total:73sqft Excluded: 708sqft

#		Dimensions	sqft	Counted as living area
1	Crawl Space	19'7" x 8'7"	168 sq. ft	No
2	Room	10'6" x 8'10"	118 sq. ft	No
3	Room	7'2" x 8'8"	62 sq. ft	Yes
4	Storage	3'9" x 9'10"	37 sq. ft	No
5	Utility	17'7" x 28'1"	371 sq. ft	No

Home data report

129 North Washington Street, Butler, Butler County,
Pennsylvania, United States, 16001



Room dimensions

Floor 2 Total:783sqft Excluded: 27sqft

#		Dimensions	sqft	Counted as living area
6	Hall	5'1" x 3'5"	17 sq. ft	Yes
7	Office	7'10" x 9'10"	77 sq. ft	Yes
8	Room	19'7" x 8'7"	168 sq. ft	Yes
9	Office	10'10" x 10'10"	120 sq. ft	Yes
10	Bath	2'4" x 6'8"	16 sq. ft	Yes
11	Office	10'10" x 9'10"	107 sq. ft	Yes
12	Office	7'2" x 10'8"	76 sq. ft	Yes
13	Room	7'2" x 3'1"	22 sq. ft	Yes
14	Office	6'9" x 6'8"	45 sq. ft	Yes
15	Deck	3'11" x 4'1"	27 sq. ft	No
16	Hall	3'10" x 7'0"	27 sq. ft	Yes

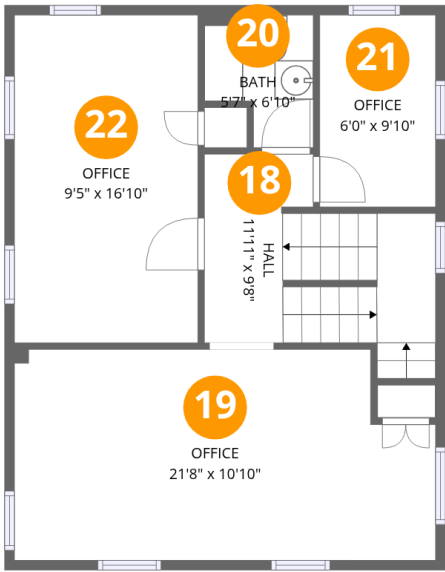
Home data report

129 North Washington Street, Butler, Butler County,
Pennsylvania, United States, 16001

#		Dimensions	sqft	Counted as living area
17	Entry	3'0" x 15'1"	53 sq. ft	Yes

Home data report

129 North Washington Street, Butler, Butler County,
Pennsylvania, United States, 16001



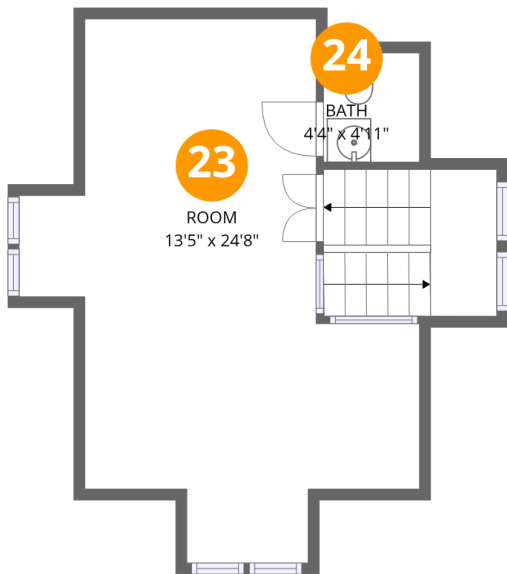
Room dimensions

Floor 3 Total:608sqft Excluded: 0sqft

#		Dimensions	sqft	Counted as living area
18	Hall	11'11" x 9'8"	101 sq. ft	Yes
19	Office	21'8" x 10'10"	222 sq. ft	Yes
20	Bath	5'7" x 6'10"	32 sq. ft	Yes
21	Office	6'0" x 9'10"	59 sq. ft	Yes
22	Office	9'5" x 16'10"	159 sq. ft	Yes

Home data report

129 North Washington Street, Butler, Butler County,
Pennsylvania, United States, 16001

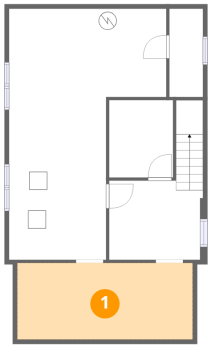


Room dimensions

Floor 4 Total:302sqft Excluded: 69sqft

#		Dimensions	sqft	Counted as living area
23	Room	13'5" x 24'8"	227 sq. ft	Yes
24	Bath	4'4" x 4'11"	16 sq. ft	Yes

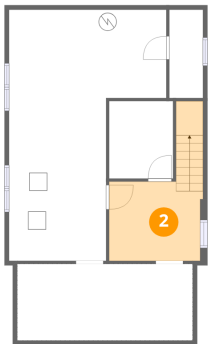
1 Floor 1 - Crawl Space



Dimensions: 19'7" x 8'7"
Area: 168 sq. ft
Counted as living area: No

Heated: No
Finished: No
Enclosed: No
Contiguous: Yes
Permitted: No
Wet space: No
Addition: No
Conversion: No

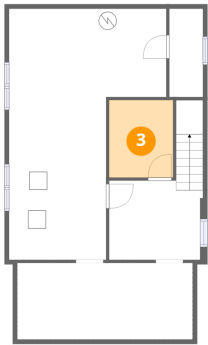
2 Floor 1 - Room



Dimensions: 10'6" x 8'10"
Area: 118 sq. ft
Counted as living area: No

Heated: Yes
Finished: No
Enclosed: Yes
Contiguous: Yes
Permitted: Yes
Wet space: No
Addition: No
Conversion: No

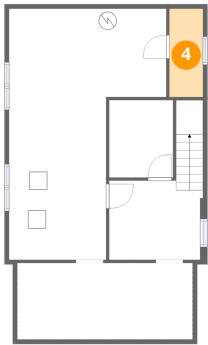
3 Floor 1 - Room



Dimensions: 7'2" x 8'8"
Area: 62 sq. ft
Counted as living area: No

Heated: Yes
Finished: Yes
Enclosed: Yes
Contiguous: No
Permitted: Yes
Wet space: No
Addition: No
Conversion: No

4 Floor 1 - Storage



Dimensions: 3'9" x 9'10"
Area: 37 sq. ft
Counted as living area: No

Heated: No
Finished: No
Enclosed: No
Contiguous: Yes
Permitted: Yes
Wet space: No
Addition: No
Conversion: No

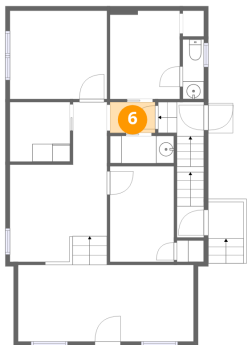
5 Floor 1 - Utility



Dimensions: 17'7" x 28'1"
Area: 371 sq. ft
Counted as living area: No

Heated: Yes
Finished: No
Enclosed: Yes
Contiguous: Yes
Permitted: Yes
Wet space: No
Addition: No
Conversion: No

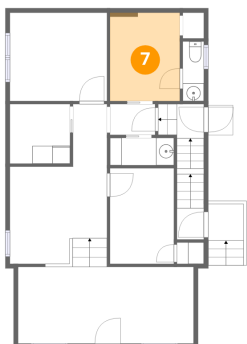
6 Floor 2 - Hall



Dimensions: 5'1" x 3'5"
Area: 17 sq. ft
Counted as living area: Yes

Heated: Yes
Finished: Yes
Enclosed: Yes
Contiguous: Yes
Permitted: Yes
Wet space: No
Addition: No
Conversion: No

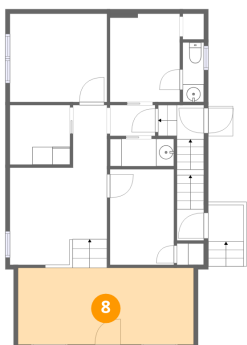
7 Floor 2 - Office



Dimensions: 7'10" x 9'10"
Area: 77 sq. ft
Counted as living area: Yes

Heated: Yes
Finished: Yes
Enclosed: Yes
Contiguous: Yes
Permitted: Yes
Wet space: No
Addition: No
Conversion: No

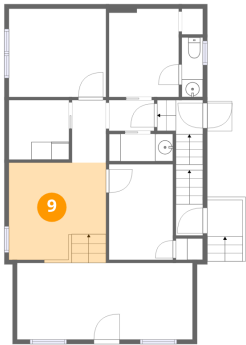
8 Floor 2 - Room



Dimensions: 19'7" x 8'7"
Area: 168 sq. ft
Counted as living area: Yes

Heated: Yes
Finished: Yes
Enclosed: Yes
Contiguous: Yes
Permitted: Yes
Wet space: No
Addition: No
Conversion: No

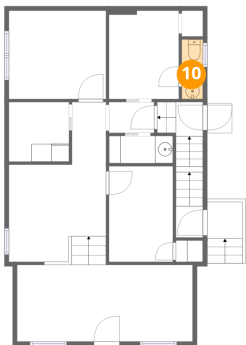
9 Floor 2 - Office



Dimensions: 10'10" x 10'10"
Area: 120 sq. ft
Counted as living area: Yes

Heated: Yes
Finished: Yes
Enclosed: Yes
Contiguous: Yes
Permitted: Yes
Wet space: No
Addition: No
Conversion: No

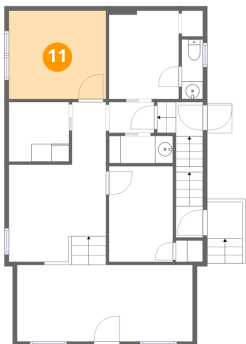
10 Floor 2 - Bath



Dimensions: 2'4" x 6'8"
Area: 16 sq. ft
Counted as living area: Yes

Heated: Yes
Finished: Yes
Enclosed: Yes
Contiguous: Yes
Permitted: Yes
Wet space: Yes
Addition: No
Conversion: No

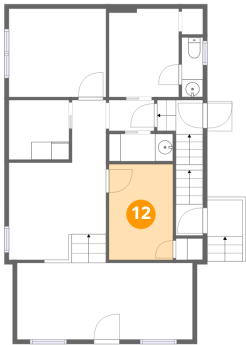
11 Floor 2 - Office



Dimensions: 10'10" x 9'10"
Area: 107 sq. ft
Counted as living area: Yes

Heated: Yes
Finished: Yes
Enclosed: Yes
Contiguous: Yes
Permitted: Yes
Wet space: No
Addition: No
Conversion: No

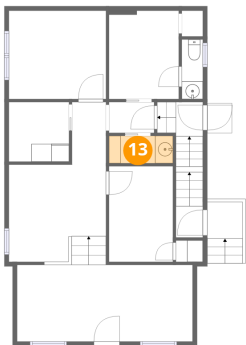
12 Floor 2 - Office



Dimensions: 7'2" x 10'8"
Area: 76 sq. ft
Counted as living area: Yes

Heated: Yes
Finished: Yes
Enclosed: Yes
Contiguous: Yes
Permitted: Yes
Wet space: No
Addition: No
Conversion: No

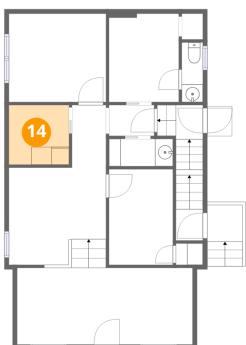
13 Floor 2 - Room



Dimensions: 7'2" x 3'1"
Area: 22 sq. ft
Counted as living area: Yes

Heated: Yes
Finished: Yes
Enclosed: Yes
Contiguous: Yes
Permitted: Yes
Wet space: No
Addition: No
Conversion: No

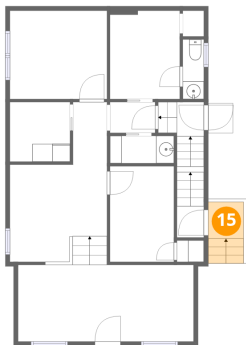
14 Floor 2 - Office



Dimensions: 6'9" x 6'8"
Area: 45 sq. ft
Counted as living area: Yes

Heated: Yes
Finished: Yes
Enclosed: Yes
Contiguous: Yes
Permitted: Yes
Wet space: No
Addition: No
Conversion: No

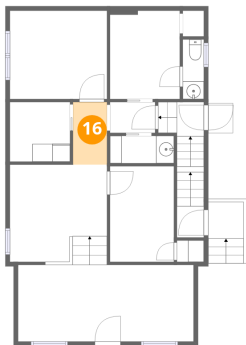
15 Floor 2 - Deck



Dimensions: 3'11" x 4'1"
Area: 27 sq. ft
Counted as living area: No

Heated: No
Finished: No
Enclosed: No
Contiguous: Yes
Permitted: Yes
Wet space: No
Addition: No
Conversion: No

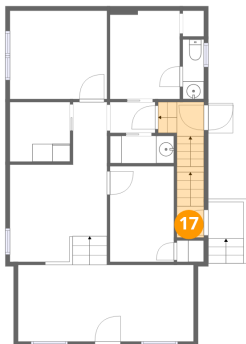
16 Floor 2 - Hall



Dimensions: 3'10" x 7'0"
Area: 27 sq. ft
Counted as living area: Yes

Heated: Yes
Finished: Yes
Enclosed: Yes
Contiguous: Yes
Permitted: Yes
Wet space: No
Addition: No
Conversion: No

17 Floor 2 - Entry

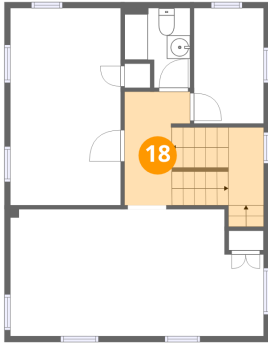


Dimensions: 3'0" x 15'1"
Area: 53 sq. ft
Counted as living area: Yes

Heated: Yes
Finished: Yes
Enclosed: Yes
Contiguous: Yes
Permitted: Yes
Wet space: No
Addition: No
Conversion: No

129 North Washington Street, Butler, Butler County,
Pennsylvania, United States, 16001

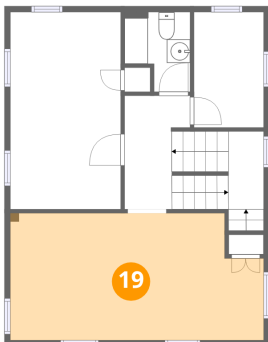
18 Floor 3 - Hall



Dimensions: 11'11" x 9'8"
Area: 101 sq. ft
Counted as living area: Yes

Heated: Yes
Finished: Yes
Enclosed: Yes
Contiguous: Yes
Permitted: Yes
Wet space: No
Addition: No
Conversion: No

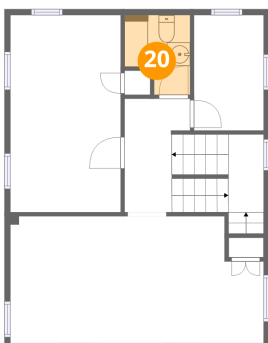
19 Floor 3 - Office



Dimensions: 21'8" x 10'10"
Area: 222 sq. ft
Counted as living area: Yes

Heated: Yes
Finished: Yes
Enclosed: Yes
Contiguous: Yes
Permitted: Yes
Wet space: No
Addition: No
Conversion: No

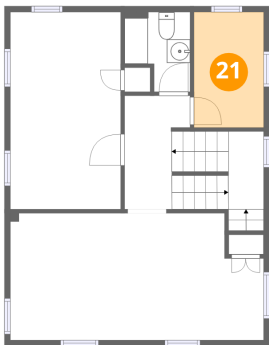
20 Floor 3 - Bath



Dimensions: 5'7" x 6'10"
Area: 32 sq. ft
Counted as living area: Yes

Heated: Yes
Finished: Yes
Enclosed: Yes
Contiguous: Yes
Permitted: Yes
Wet space: Yes
Addition: No
Conversion: No

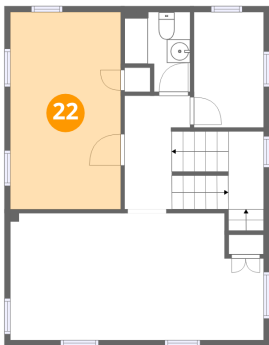
21 Floor 3 - Office



Dimensions: 6'0" x 9'10"
Area: 59 sq. ft
Counted as living area: Yes

Heated: Yes
Finished: Yes
Enclosed: Yes
Contiguous: Yes
Permitted: Yes
Wet space: No
Addition: No
Conversion: No

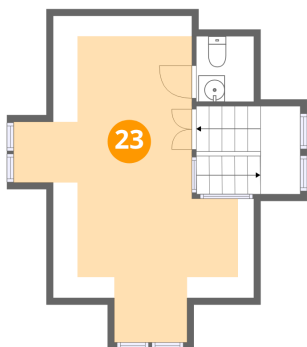
22 Floor 3 - Office



Dimensions: 9'5" x 16'10"
Area: 159 sq. ft
Counted as living area: Yes

Heated: Yes
Finished: Yes
Enclosed: Yes
Contiguous: Yes
Permitted: Yes
Wet space: No
Addition: No
Conversion: No

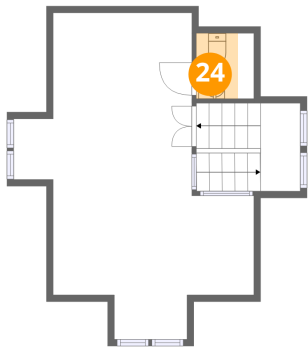
23 Floor 4 - Room



Dimensions: 13'5" x 24'8"
Area: 227 sq. ft
Counted as living area: Yes

Heated: Yes
Finished: Yes
Enclosed: Yes
Contiguous: Yes
Permitted: Yes
Wet space: No
Addition: No
Conversion: No

24 Floor 4 - Bath



Dimensions: 4'4" x 4'11"
Area: 16 sq. ft
Counted as living area: Yes

Heated: Yes
Finished: Yes
Enclosed: Yes
Contiguous: Yes
Permitted: Yes
Wet space: Yes
Addition: No
Conversion: No