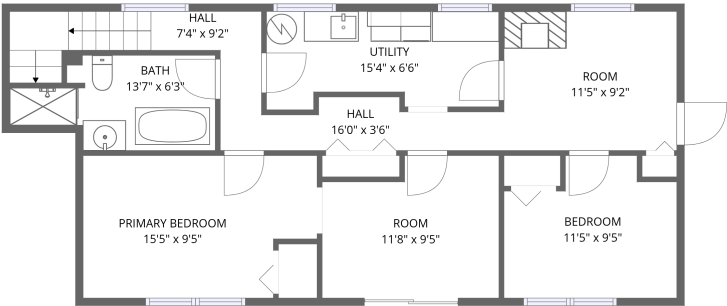
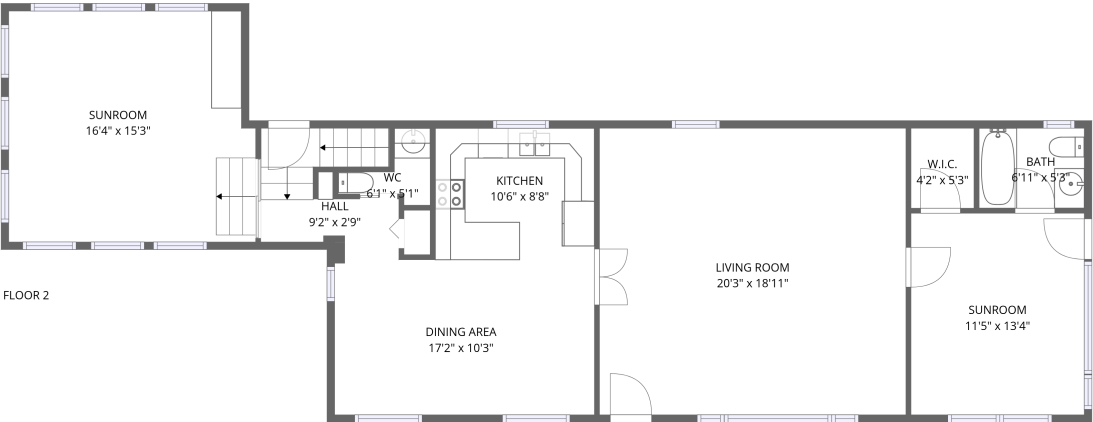


Home report

326 Black Bass Bay Road, Perth, Lanark County, Ontario, Canada, K7H 3C8, House




Total Area: 1997 sq. ft

Below Ground: 779 sq. ft, Floor 2: 1218 sq. ft


Excluded: Walls: 162 sq. ft

Property summary

 2 Floors

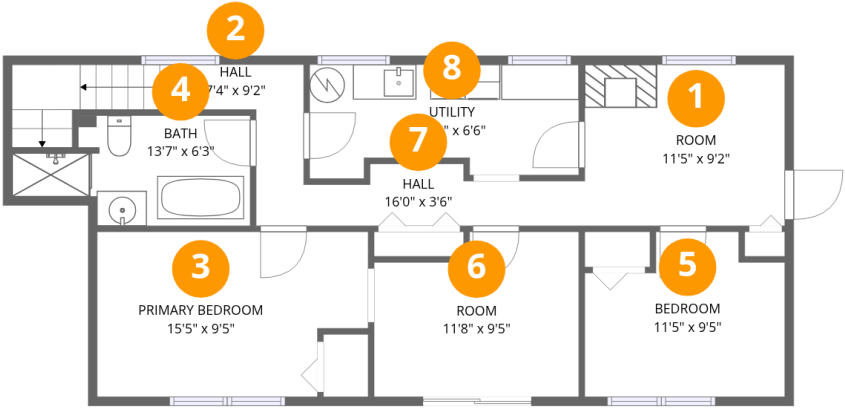
 2 Bedrooms

 2 Bathrooms

 1 Half baths

Home report

326 Black Bass Bay Road, Perth, Lanark County, Ontario,  
Canada, K7H 3C8, House



Room dimensions

Floor 1 Below ground Total:779sqft   Excluded: 0sqft

#		Max Dimensions	sqft	Included
1	Room	11'5" x 9'2"	105 sq. ft	Yes
2	Hall	7'4" x 9'2"	68 sq. ft	Yes
3	Primary Bedroom	15'5" x 9'5"	134 sq. ft	Yes
4	Bath	13'7" x 6'3"	69 sq. ft	Yes
5	Bedroom	11'5" x 9'5"	93 sq. ft	Yes
6	Room	11'8" x 9'5"	100 sq. ft	Yes
7	Hall	16'0" x 3'6"	45 sq. ft	Yes
8	Utility	15'4" x 6'6"	91 sq. ft	Yes

Home report

326 Black Bass Bay Road, Perth, Lanark County, Ontario,  
Canada, K7H 3C8, House



Room dimensions

Floor 2 Total:1218sqft Excluded: 0sqft

#		Max Dimensions	sqft	Included
9	Dining Area	17'2" x 10'3"	176 sq. ft	Yes
10	Hall	9'2" x 2'9"	62 sq. ft	Yes
11	Sunroom	16'4" x 15'3"	242 sq. ft	Yes
12	Kitchen	10'6" x 8'8"	91 sq. ft	Yes
13	WC	6'1" x 5'1"	17 sq. ft	Yes
14	Living Room	20'3" x 18'11"	383 sq. ft	Yes
15	W.I.C.	4'2" x 5'3"	22 sq. ft	Yes
16	Bath	6'11" x 5'3"	37 sq. ft	Yes
17	Sunroom	11'5" x 13'4"	152 sq. ft	Yes

326 Black Bass Bay Road, Perth, Lanark County, Ontario,  
Canada, K7H 3C8, House

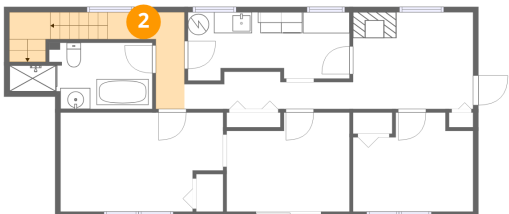
1 Floor 1 - Room



Max Dimensions: 11'5" x 9'2"  
Calculated Area: 105 sq. ft  
Included: Yes

Heated: Yes  
Finished: Yes  
Enclosed: Yes  
Contiguous: Yes  
Permitted: Yes  
Wet space: No  
Addition: No  
Conversion: No

2 Floor 1 - Hall



Max Dimensions: 7'4" x 9'2"  
Calculated Area: 68 sq. ft  
Included: Yes

Heated: Yes  
Finished: Yes  
Enclosed: Yes  
Contiguous: Yes  
Permitted: Yes  
Wet space: No  
Addition: No  
Conversion: No

326 Black Bass Bay Road, Perth, Lanark County, Ontario,  
Canada, K7H 3C8, House

### 3 Floor 1 - Primary Bedroom



Max Dimensions: 15'5" x 9'5"  
Calculated Area: 134 sq. ft  
Included: Yes

Heated: Yes  
Finished: Yes  
Enclosed: Yes  
Contiguous: Yes  
Permitted: Yes  
Wet space: No  
Addition: No  
Conversion: No

### 4 Floor 1 - Bath



Max Dimensions: 13'7" x 6'3"  
Calculated Area: 69 sq. ft  
Included: Yes

Heated: Yes  
Finished: Yes  
Enclosed: Yes  
Contiguous: Yes  
Permitted: Yes  
Wet space: Yes  
Addition: No  
Conversion: No

### 5 Floor 1 - Bedroom



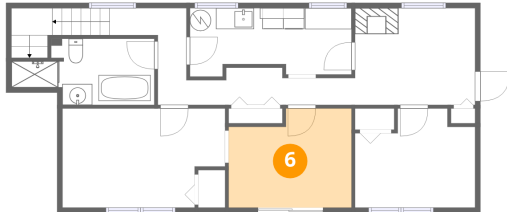
Max Dimensions: 11'5" x 9'5"  
Calculated Area: 93 sq. ft  
Included: Yes

Heated: Yes  
Finished: Yes  
Enclosed: Yes  
Contiguous: Yes  
Permitted: Yes  
Wet space: No  
Addition: No  
Conversion: No

## Home report

326 Black Bass Bay Road, Perth, Lanark County, Ontario,  
Canada, K7H 3C8, House

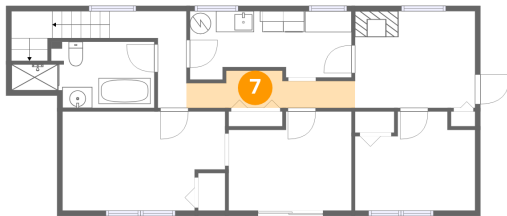
### 6 Floor 1 - Room



Max Dimensions: 11'8" x 9'5"  
Calculated Area: 100 sq. ft  
Included: Yes

Heated: Yes  
Finished: Yes  
Enclosed: Yes  
Contiguous: Yes  
Permitted: Yes  
Wet space: No  
Addition: No  
Conversion: No

### 7 Floor 1 - Hall



Max Dimensions: 16'0" x 3'6"  
Calculated Area: 45 sq. ft  
Included: Yes

Heated: Yes  
Finished: Yes  
Enclosed: Yes  
Contiguous: Yes  
Permitted: Yes  
Wet space: No  
Addition: No  
Conversion: No

### 8 Floor 1 - Utility



Max Dimensions: 15'4" x 6'6"  
Calculated Area: 91 sq. ft  
Included: Yes

Heated: Yes  
Finished: Yes  
Enclosed: Yes  
Contiguous: Yes  
Permitted: Yes  
Wet space: No  
Addition: No  
Conversion: No

326 Black Bass Bay Road, Perth, Lanark County, Ontario,  
Canada, K7H 3C8, House

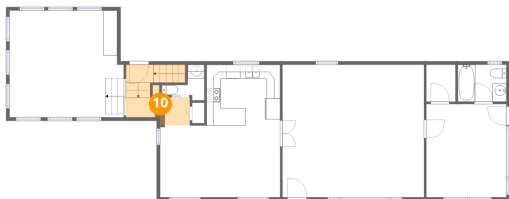
9 Floor 2 - Dining Area



Max Dimensions: 17'2" x 10'3"  
Calculated Area: 176 sq. ft  
Included: Yes

Heated: Yes  
Finished: Yes  
Enclosed: Yes  
Contiguous: Yes  
Permitted: Yes  
Wet space: No  
Addition: No  
Conversion: No

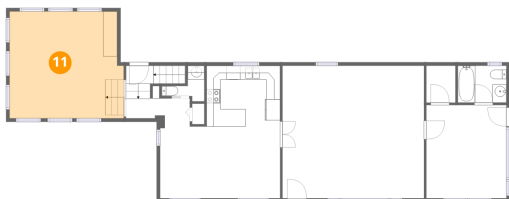
10 Floor 2 - Hall



Max Dimensions: 9'2" x 2'9"  
Calculated Area: 62 sq. ft  
Included: Yes

Heated: Yes  
Finished: Yes  
Enclosed: Yes  
Contiguous: Yes  
Permitted: Yes  
Wet space: No  
Addition: No  
Conversion: No

11 Floor 2 - Sunroom



Max Dimensions: 16'4" x 15'3"  
Calculated Area: 242 sq. ft  
Included: Yes

Heated: Yes  
Finished: Yes  
Enclosed: Yes  
Contiguous: Yes  
Permitted: Yes  
Wet space: No  
Addition: No  
Conversion: No

326 Black Bass Bay Road, Perth, Lanark County, Ontario,  
Canada, K7H 3C8, House

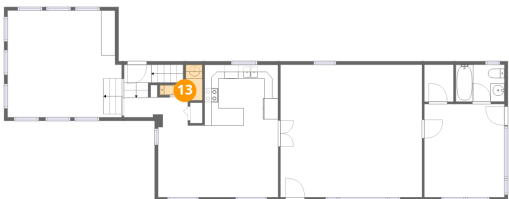
12 Floor 2 - Kitchen



Max Dimensions: 10'6" x 8'8"  
Calculated Area: 91 sq. ft  
Included: Yes

Heated: Yes  
Finished: Yes  
Enclosed: Yes  
Contiguous: Yes  
Permitted: Yes  
Wet space: No  
Addition: No  
Conversion: No

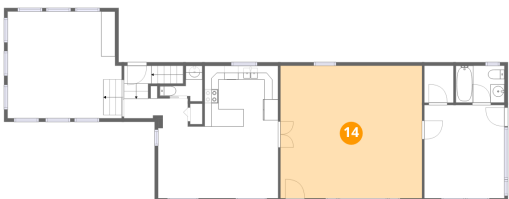
13 Floor 2 - WC



Max Dimensions: 6'1" x 5'1"  
Calculated Area: 17 sq. ft  
Included: Yes

Heated: Yes  
Finished: Yes  
Enclosed: Yes  
Contiguous: Yes  
Permitted: Yes  
Wet space: No  
Addition: No  
Conversion: No

14 Floor 2 - Living Room



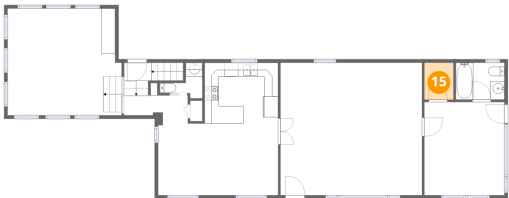
Max Dimensions: 20'3" x 18'11"  
Calculated Area: 383 sq. ft  
Included: Yes

Heated: Yes  
Finished: Yes  
Enclosed: Yes  
Contiguous: Yes  
Permitted: Yes  
Wet space: No  
Addition: No  
Conversion: No



326 Black Bass Bay Road, Perth, Lanark County, Ontario,  
Canada, K7H 3C8, House

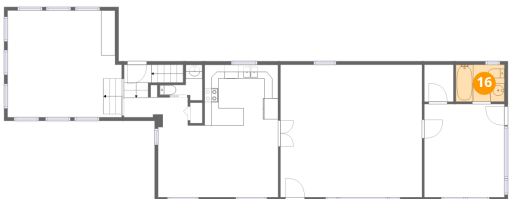
15 Floor 2 - W.I.C.



Max Dimensions: 4'2" x 5'3"  
Calculated Area: 22 sq. ft  
Included: Yes

Heated: Yes  
Finished: Yes  
Enclosed: Yes  
Contiguous: Yes  
Permitted: Yes  
Wet space: No  
Addition: No  
Conversion: No

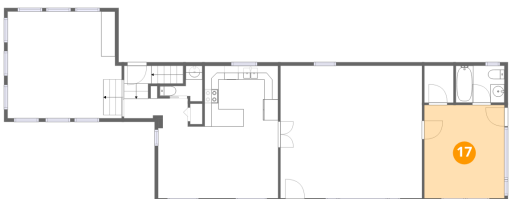
16 Floor 2 - Bath



Max Dimensions: 6'11" x 5'3"  
Calculated Area: 37 sq. ft  
Included: Yes

Heated: Yes  
Finished: Yes  
Enclosed: Yes  
Contiguous: Yes  
Permitted: Yes  
Wet space: Yes  
Addition: No  
Conversion: No

17 Floor 2 - Sunroom



Max Dimensions: 11'5" x 13'4"  
Calculated Area: 152 sq. ft  
Included: Yes

Heated: Yes  
Finished: Yes  
Enclosed: Yes  
Contiguous: Yes  
Permitted: Yes  
Wet space: No  
Addition: No  
Conversion: No