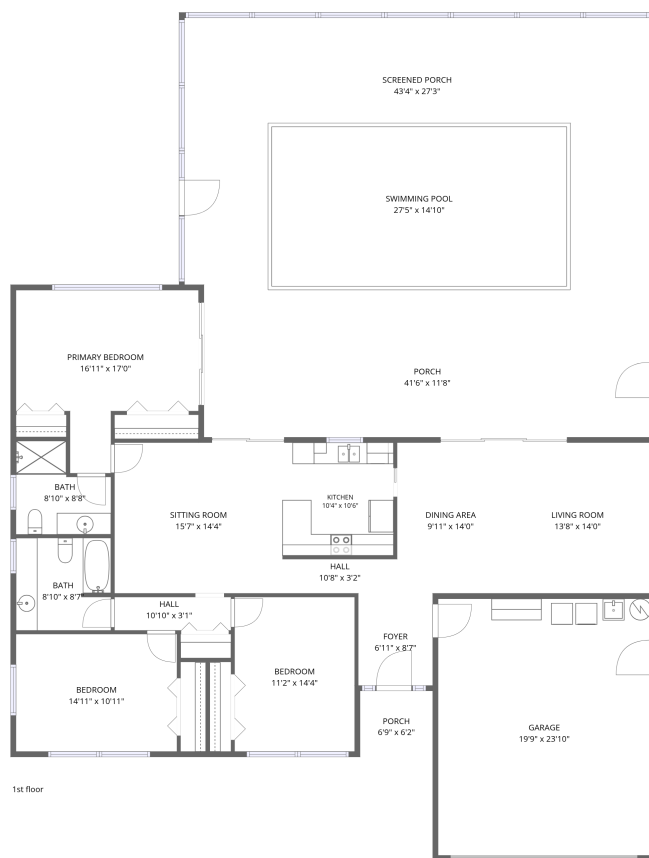


## Home data report

**1368 South Hercules Avenue, Imperial Park, Clearwater, Pinellas County, Florida, United States, 33764**



**Total Area: 1591 sq. ft**

1st Floor: 1591 sq. ft

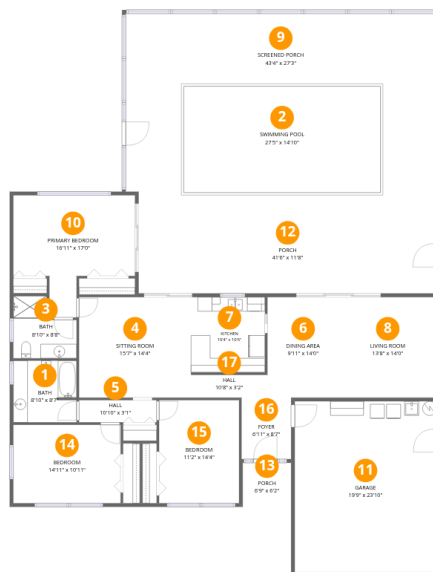
Excluded: Garage 471 sq. ft, Porch 527 sq. ft, Screened porch 770 sq. ft, Walls: 188 sq. ft

## Property summary



Home data report

1368 South Hercules Avenue, Imperial Park, Clearwater, Pinellas County, Florida, United States, 33764



Room dimensions

Floor 1

Total:1591sqft

Excluded: 1768sqft

#		Dimensions	sqft	Counted as living area
1	Bath	8'10" x 8'7"	75 sq. ft	Yes
2	Swimming Pool	27'5" x 14'10"	406 sq. ft	No
3	Bath	8'10" x 8'8"	63 sq. ft	Yes
4	Sitting Room	15'7" x 14'4"	220 sq. ft	Yes
5	Hall	10'10" x 3'1"	34 sq. ft	Yes
6	Dining Area	9'11" x 14'0"	139 sq. ft	Yes
7	Kitchen	10'4" x 10'6"	108 sq. ft	Yes
8	Living Room	13'8" x 14'0"	191 sq. ft	Yes
9	Screened Porch	43'4" x 27'3"	1177 sq. ft	No
10	Primary Bedroom	16'11" x 17'0"	213 sq. ft	Yes
11	Garage	19'9" x 23'10"	471 sq. ft	No

Home data report

**1368 South Hercules Avenue, Imperial Park, Clearwater, Pinellas County, Florida, United States, 33764**

#		Dimensions	sqft	Counted as living area
12	Porch	41'6" x 11'8"	486 sq. ft	No
13	Porch	6'9" x 6'2"	41 sq. ft	No
14	Bedroom	14'11" x 10'11"	163 sq. ft	Yes
15	Bedroom	11'2" x 14'4"	160 sq. ft	Yes
16	Foyer	6'11" x 8'7"	59 sq. ft	Yes
17	Hall	10'8" x 3'2"	34 sq. ft	Yes

**1368 South Hercules Avenue, Imperial Park, Clearwater, Pinellas County, Florida, United States, 33764**

**1 Floor 1 - Bath**

---

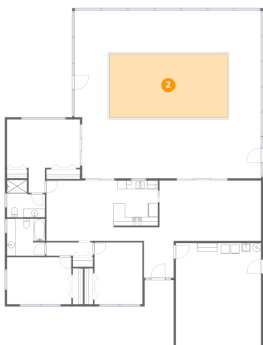


Dimensions: 8'10" x 8'7"  
Area: 75 sq. ft  
Counted as living area: Yes

Heated: Yes  
Finished: Yes  
Enclosed: Yes  
Contiguous: Yes  
Permitted: Yes  
Wet space: Yes  
Addition: No  
Conversion: No

**2 Floor 1 - Swimming Pool**

---



Dimensions: 27'5" x 14'10"  
Area: 406 sq. ft  
Counted as living area: No

Heated: No  
Finished: No  
Enclosed: No  
Contiguous: Yes  
Permitted: No  
Wet space: No  
Addition: No  
Conversion: No

1368 South Hercules Avenue, Imperial Park, Clearwater, Pinellas County, Florida, United States, 33764

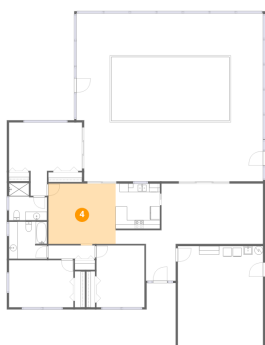
**3** Floor 1 - Bath



Dimensions: 8'10" x 8'8"  
Area: 63 sq. ft  
Counted as living area: Yes

Heated: Yes  
Finished: Yes  
Enclosed: Yes  
Contiguous: Yes  
Permitted: Yes  
Wet space: Yes  
Addition: No  
Conversion: No

**4** Floor 1 - Sitting Room



Dimensions: 15'7" x 14'4"  
Area: 220 sq. ft  
Counted as living area: Yes

Heated: Yes  
Finished: Yes  
Enclosed: Yes  
Contiguous: Yes  
Permitted: Yes  
Wet space: No  
Addition: No  
Conversion: No

**5** Floor 1 - Hall



Dimensions: 10'10" x 3'1"  
Area: 34 sq. ft  
Counted as living area: Yes

Heated: Yes  
Finished: Yes  
Enclosed: Yes  
Contiguous: Yes  
Permitted: Yes  
Wet space: No  
Addition: No  
Conversion: No

1368 South Hercules Avenue, Imperial Park, Clearwater, Pinellas County, Florida, United States, 33764

6 Floor 1 - Dining Area



Dimensions: 9'11" x 14'0"  
Area: 139 sq. ft  
Counted as living area: Yes

Heated: Yes  
Finished: Yes  
Enclosed: Yes  
Contiguous: Yes  
Permitted: Yes  
Wet space: No  
Addition: No  
Conversion: No

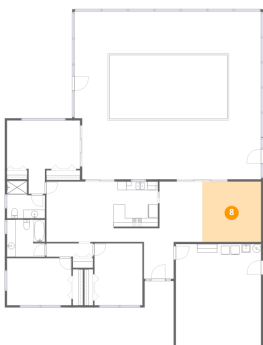
7 Floor 1 - Kitchen



Dimensions: 10'4" x 10'6"  
Area: 108 sq. ft  
Counted as living area: Yes

Heated: Yes  
Finished: Yes  
Enclosed: Yes  
Contiguous: Yes  
Permitted: Yes  
Wet space: No  
Addition: No  
Conversion: No

8 Floor 1 - Living Room

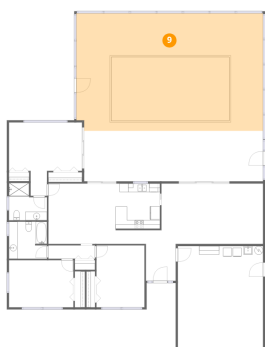


Dimensions: 13'8" x 14'0"  
Area: 191 sq. ft  
Counted as living area: Yes

Heated: Yes  
Finished: Yes  
Enclosed: Yes  
Contiguous: Yes  
Permitted: Yes  
Wet space: No  
Addition: No  
Conversion: No

1368 South Hercules Avenue, Imperial Park, Clearwater, Pinellas County, Florida, United States, 33764

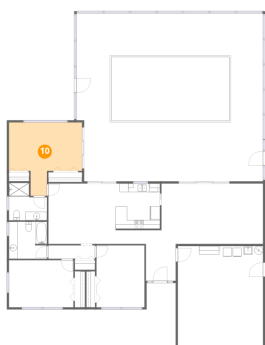
9 Floor 1 - Screened Porch



Dimensions: 43'4" x 27'3"  
Area: 1177 sq. ft  
Counted as living area: No

Heated: No  
Finished: No  
Enclosed: No  
Contiguous: Yes  
Permitted: Yes  
Wet space: No  
Addition: No  
Conversion: No

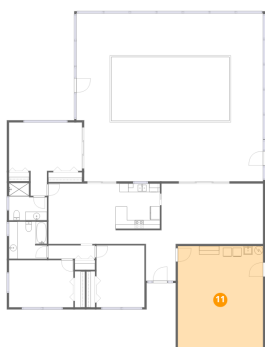
10 Floor 1 - Primary Bedroom



Dimensions: 16'11" x 17'0"  
Area: 213 sq. ft  
Counted as living area: Yes

Heated: Yes  
Finished: Yes  
Enclosed: Yes  
Contiguous: Yes  
Permitted: Yes  
Wet space: No  
Addition: No  
Conversion: No

11 Floor 1 - Garage



Dimensions: 19'9" x 23'10"  
Area: 471 sq. ft  
Counted as living area: No

Heated: No  
Finished: No  
Enclosed: Yes  
Contiguous: Yes  
Permitted: Yes  
Wet space: No  
Addition: No  
Conversion: No

1368 South Hercules Avenue, Imperial Park, Clearwater, Pinellas County, Florida, United States, 33764

**12** Floor 1 - Porch



Dimensions: 41'6" x 11'8"  
Area: 486 sq. ft  
Counted as living area: No

Heated: No  
Finished: No  
Enclosed: No  
Contiguous: Yes  
Permitted: Yes  
Wet space: No  
Addition: No  
Conversion: No

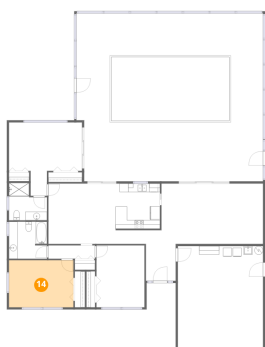
**13** Floor 1 - Porch



Dimensions: 6'9" x 6'2"  
Area: 41 sq. ft  
Counted as living area: No

Heated: No  
Finished: No  
Enclosed: No  
Contiguous: Yes  
Permitted: Yes  
Wet space: No  
Addition: No  
Conversion: No

**14** Floor 1 - Bedroom

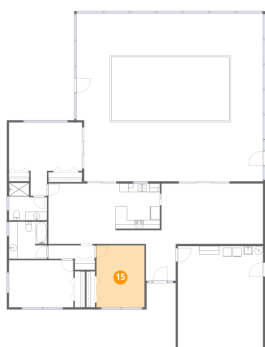


Dimensions: 14'11" x 10'11"  
Area: 163 sq. ft  
Counted as living area: Yes

Heated: Yes  
Finished: Yes  
Enclosed: Yes  
Contiguous: Yes  
Permitted: Yes  
Wet space: No  
Addition: No  
Conversion: No

1368 South Hercules Avenue, Imperial Park, Clearwater, Pinellas County, Florida, United States, 33764

**15** Floor 1 - Bedroom



Dimensions: 11'2" x 14'4"  
Area: 160 sq. ft  
Counted as living area: Yes

Heated: Yes  
Finished: Yes  
Enclosed: Yes  
Contiguous: Yes  
Permitted: Yes  
Wet space: No  
Addition: No  
Conversion: No

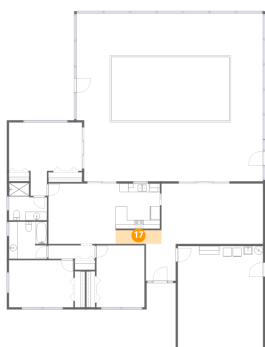
**16** Floor 1 - Foyer



Dimensions: 6'11" x 8'7"  
Area: 59 sq. ft  
Counted as living area: Yes

Heated: Yes  
Finished: Yes  
Enclosed: Yes  
Contiguous: Yes  
Permitted: Yes  
Wet space: No  
Addition: No  
Conversion: No

**17** Floor 1 - Hall



Dimensions: 10'8" x 3'2"  
Area: 34 sq. ft  
Counted as living area: Yes

Heated: Yes  
Finished: Yes  
Enclosed: Yes  
Contiguous: Yes  
Permitted: Yes  
Wet space: No  
Addition: No  
Conversion: No