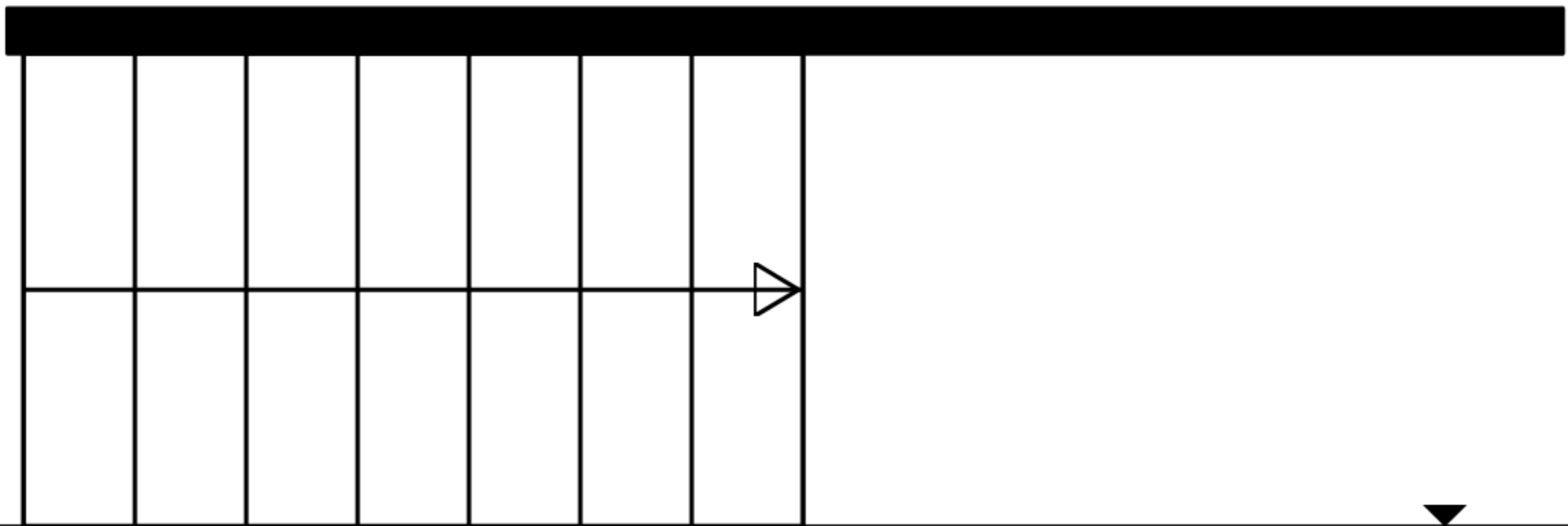
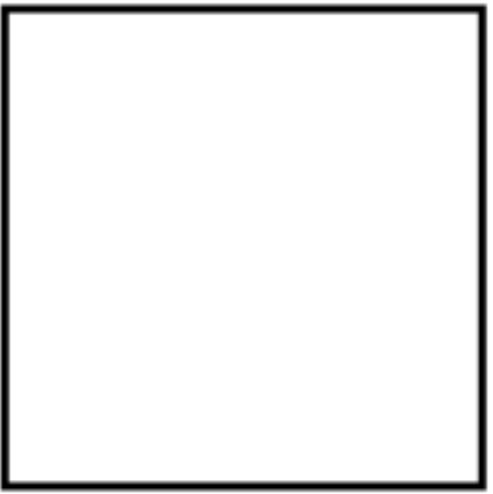
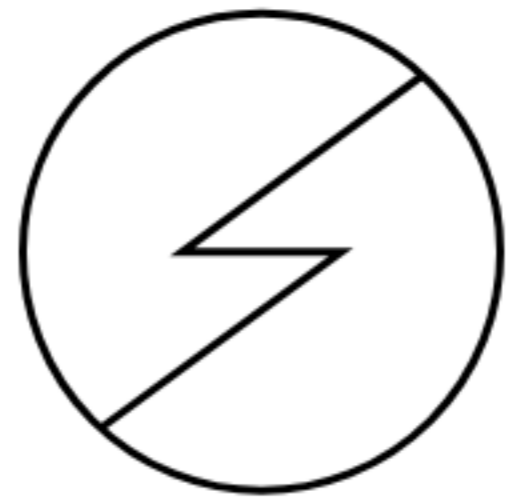
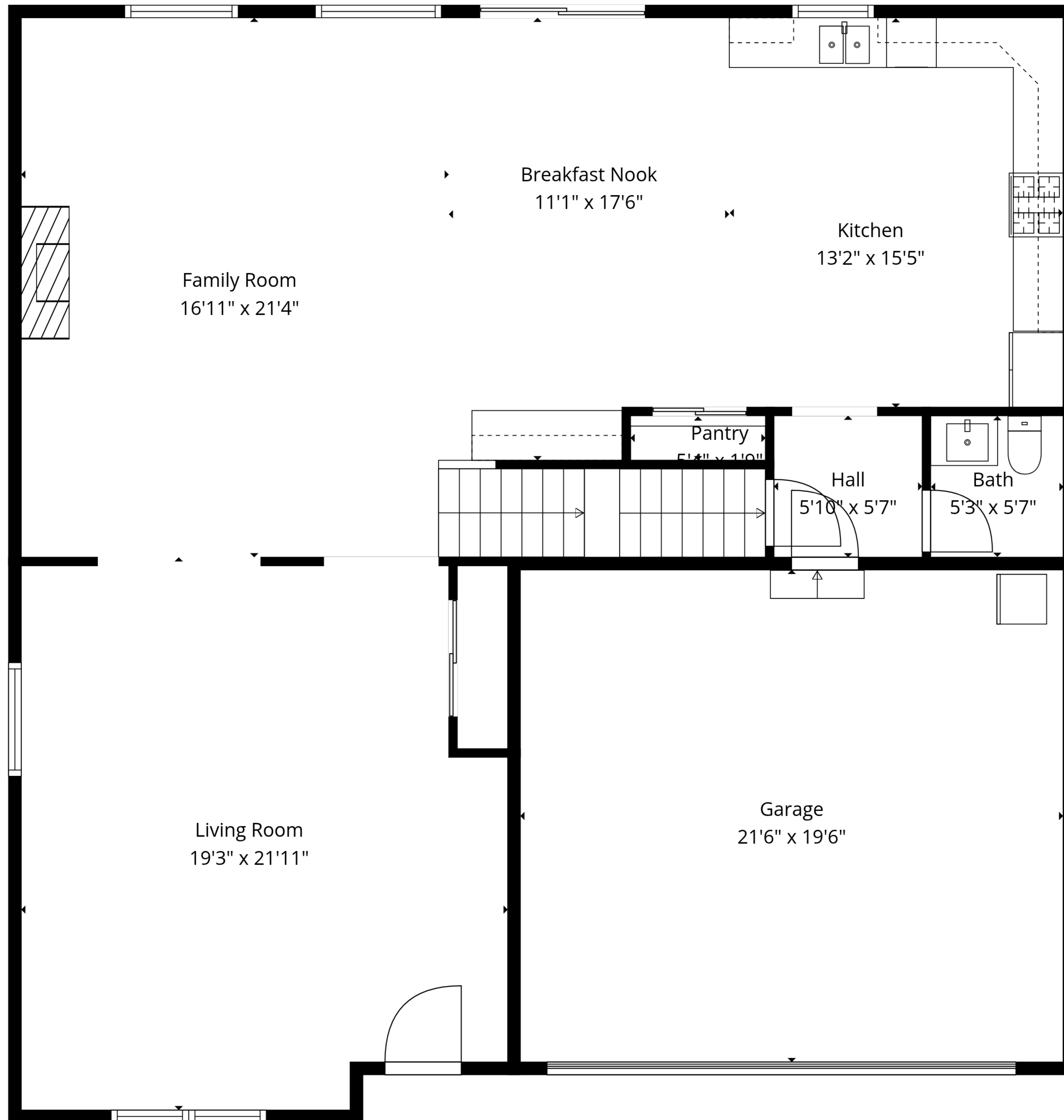


Basement
41'3" x 20'2"



TOTAL: 3019 sq. ft
Basement: 0 sq. ft, 1st floor: 1290 sq. ft, 2nd floor: 1729 sq. ft
EXCLUDED AREAS: BASEMENT: 830 sq. ft, GARAGE: 418 sq. ft, WALLS: 254 sq. ft

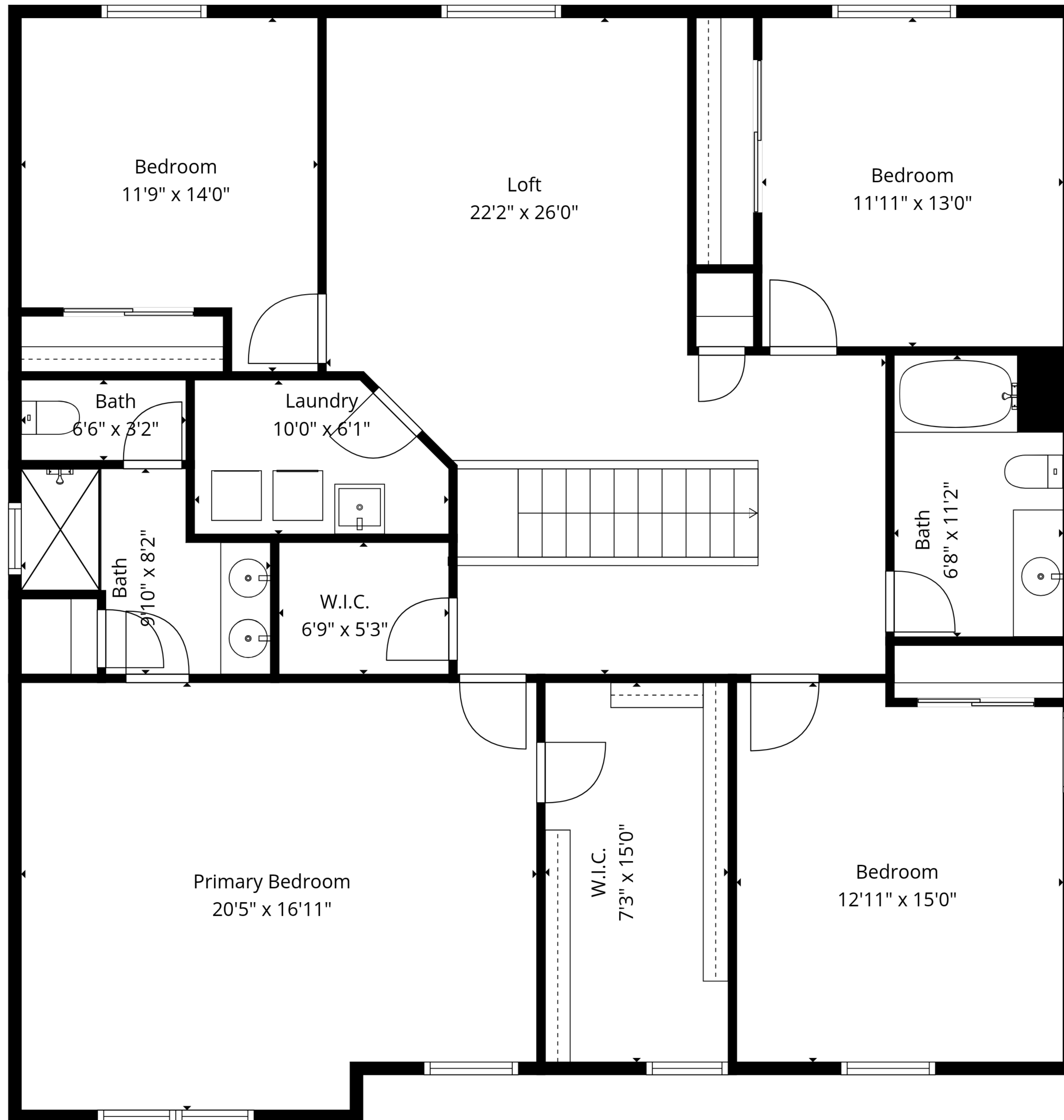


TOTAL: 3019 sq. ft

Basement: 0 sq. ft, 1st floor: 1290 sq. ft, 2nd floor: 1729 sq. ft

EXCLUDED AREAS: BASEMENT: 830 sq. ft, GARAGE: 418 sq. ft, WALLS: 254 sq. ft



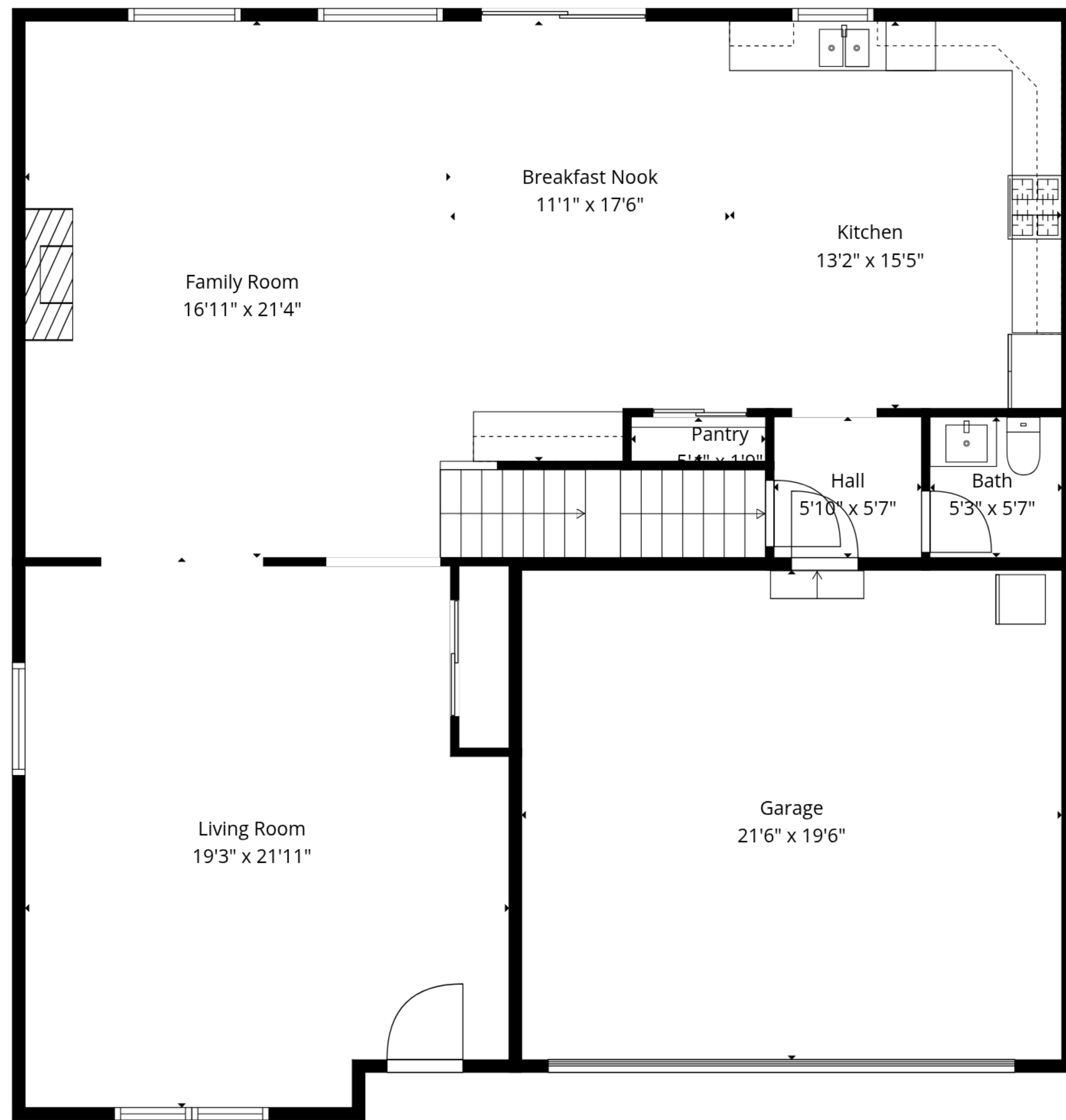


TOTAL: 3019 sq. ft

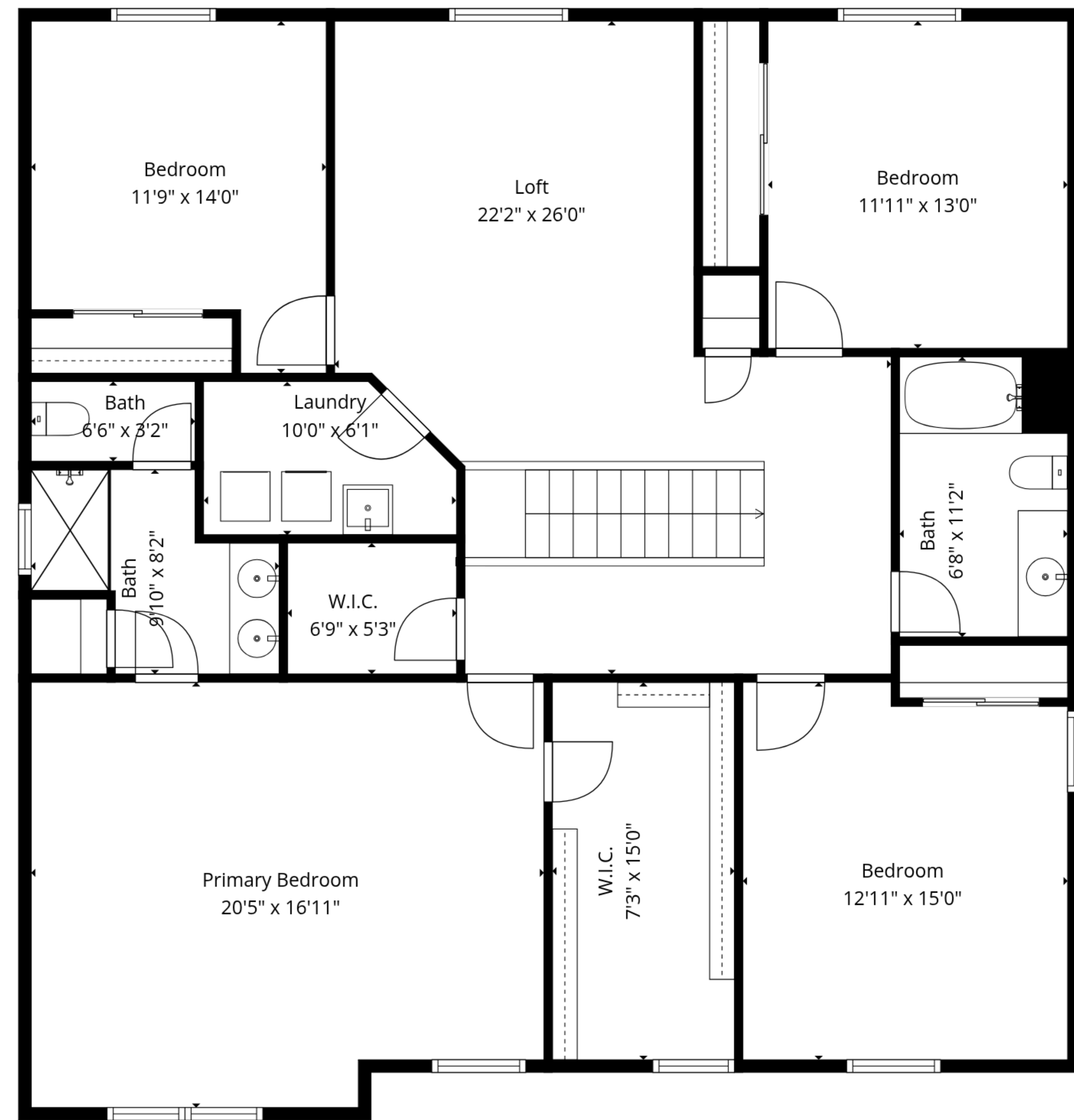
Basement: 0 sq. ft, 1st floor: 1290 sq. ft, 2nd floor: 1729 sq. ft

EXCLUDED AREAS: BASEMENT: 830 sq. ft, GARAGE: 418 sq. ft, WALLS: 254 sq. ft





1st Floor



2nd Floor



Basement

TOTAL: 3019 sq. ft

Basement: 0 sq. ft, 1st floor: 1290 sq. ft, 2nd floor: 1729 sq. ft

EXCLUDED AREAS: BASEMENT: 830 sq. ft, GARAGE: 418 sq. ft, WALLS: 254 sq. ft

