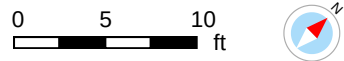
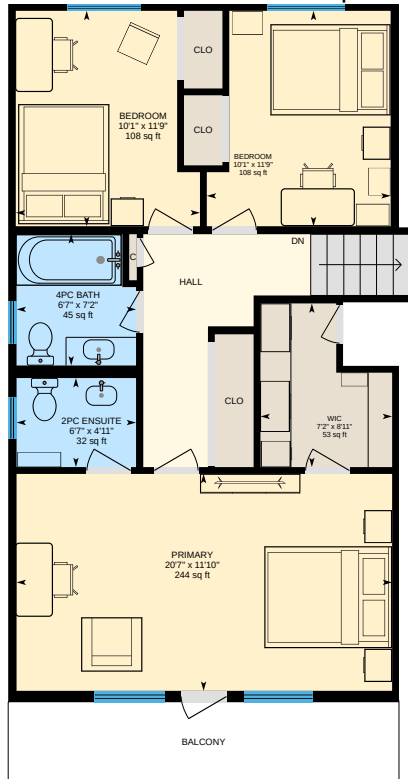




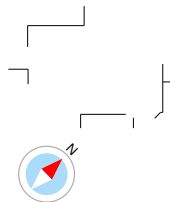
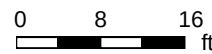
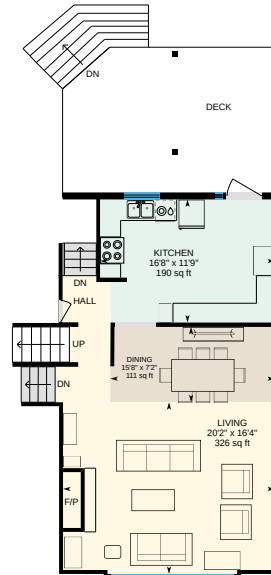
3rd Floor

Exterior Area 803.30 sq ft



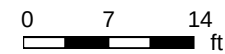
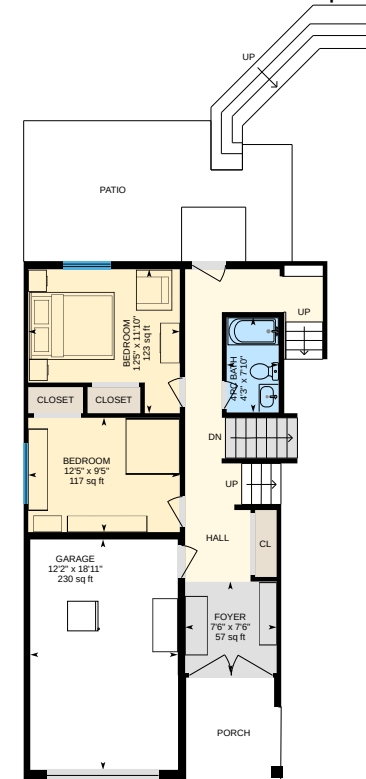
2nd Floor

Exterior Area 748.29 sq ft



1st Floor

Exterior Area 582.08 sq ft



8822 161 St NW, Edmonton, AB

For illustrative purposes only. All reported dimensions, property sizes and floor areas are approximate and subject to independent verification. To the extent permitted by law, no warranty is made as to accuracy or completeness, and no liability will be accepted for any errors or omissions.



Basement (Below Grade)
Exterior Area 832.13 sq ft



8822 161 St NW, Edmonton, AB

For illustrative purposes only. All reported dimensions, property sizes and floor areas are approximate and subject to independent verification. To the extent permitted by law, no warranty is made as to accuracy or completeness, and no liability will be accepted for any errors or omissions.