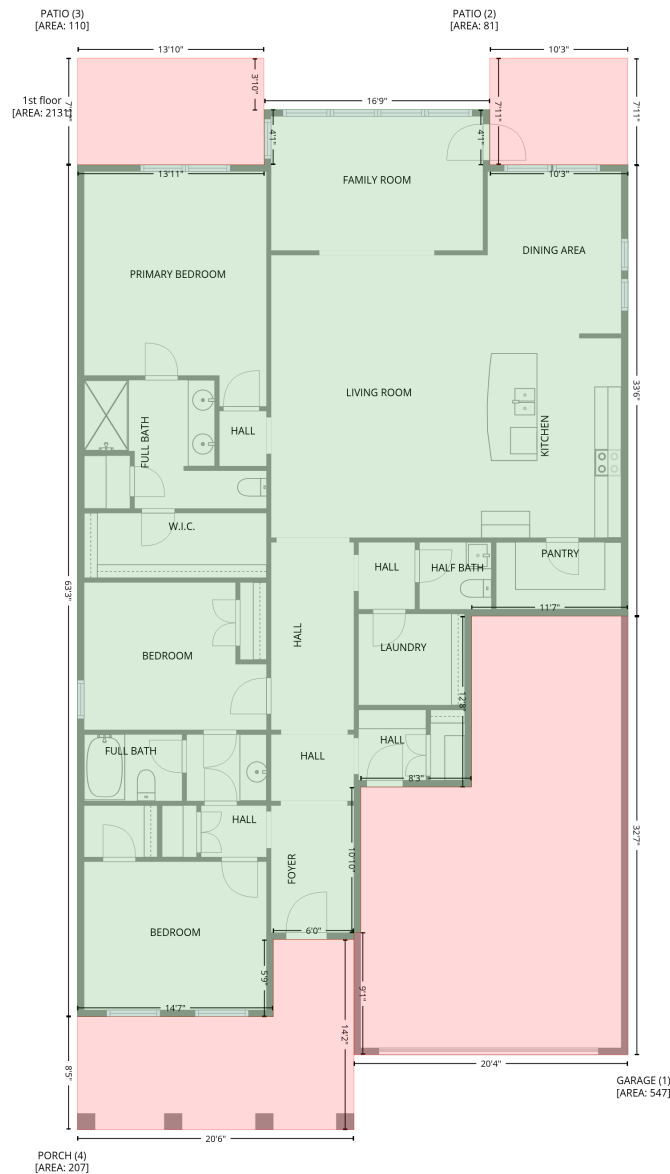


19 Moray Place, Gaylords Crossroads, Simpsonville, Greenville County, South Carolina, United States, 29644

Gross Living Area: 2131 sq. ft

Level 1



Space	Area (sq. ft)	Calculation
1st floor (Living area)	2131	Coordinate Polygon Area Algorithm using inches $-((470.5 + 470.5) * (170.8 - 220) + (470.5 + 593.7) * (220 - 220) + (593.7 + 593.7) * (220 - 622.1) + (593.7 + 454.3) * (622.1 - 622.1) + (454.3 + 454.3) * (622.1 - 774.4) + (454.3 + 355.5) * (774.4 - 774.4) + (355.5 + 355.5) * (774.4 - 904.2) + (355.5 + 349.5) * (904.2 - 904.2) + (349.5 + 349.5) * (904.2 - 910.2) + (349.5 + 277.6) * (910.2 - 910.2) + (277.6 + 277.6) * (910.2 - 979.1) + (277.6 + 103.1) * (979.1 - 979.1) + (103.1 + 103.1) * (979.1 - 220) + (103.1 + 269.6) * (220 - 220) + (269.6 + 269.6) * (220 - 170.8) + (269.6 + 470.5) * (170.8 - 170.8)) * 0.5 * 0.00694$

19 Moray Place, Gaylords Crossroads, Simpsonville, Greenville County, South Carolina, United States, 29644

Gross Living Area: 2131 sq. ft

Level 1

Space	Area (sq. ft)	Calculation <small>Coordinate Polygon Area Algorithm using inches</small>
GARAGE (Non-living area)	547	$-\left((593.7 + 593.7) * (622.1 - 1013) + (593.7 + 349.5) * (1013 - 1013) + (349.5 + 349.5) * (1013 - 904.2) + (349.5 + 355.5) * (904.2 - 904.2) + (355.5 + 355.5) * (904.2 - 774.4) + (355.5 + 454.3) * (774.4 - 774.4) + (454.3 + 454.3) * (774.4 - 622.1) + (454.3 + 593.7) * (622.1 - 622.1)\right) * 0.5 * 0.00694$
PATIO (Non-living area)	81	$-\left((593.5 + 593.5) * (125 - 220) + (593.5 + 470.5) * (220 - 220) + (470.5 + 470.5) * (220 - 125) + (470.5 + 593.5) * (125 - 125)\right) * 0.5 * 0.00694$
PATIO (Non-living area)	110	$-\left((269.2 + 269.2) * (125 - 171.2) + (269.2 + 269.6) * (171.2 - 220) + (269.6 + 103.3) * (220 - 220) + (103.3 + 103.3) * (220 - 125) + (103.3 + 269.2) * (125 - 125)\right) * 0.5 * 0.00694$
PORCH (Non-living area)	207	$-\left((349.5 + 349.5) * (910.2 - 1079.7) + (349.5 + 103.1) * (1079.7 - 1079.7) + (103.1 + 103.1) * (1079.7 - 979.1) + (103.1 + 277.6) * (979.1 - 979.1) + (277.6 + 277.6) * (979.1 - 910.2) + (277.6 + 349.5) * (910.2 - 910.2)\right) * 0.5 * 0.00694$