



Total Area: 1556 sq. ft

Basement: 0 sq. ft, 1st Floor: 742 sq. ft, 2nd Floor: 707 sq. ft, 3rd Floor: 107 sq. ft

Excluded: Basement 699 sq. ft, Deck 166 sq. ft, Porch 173 sq. ft, Low ceiling 288 sq. ft, Walls: 213 sq. ft

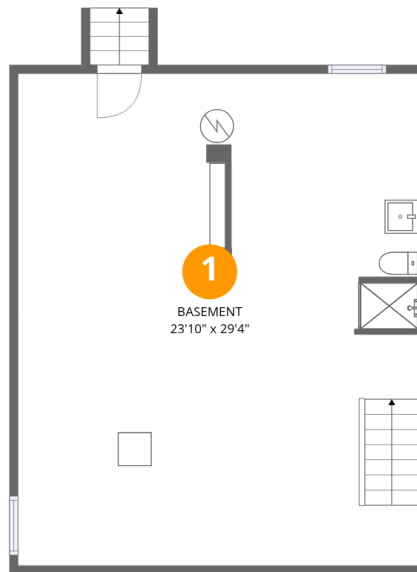
Property summary

4 Floors

4 Bedrooms

1 Bathrooms

1 Half baths



Room dimensions

Floor 1 Below grade

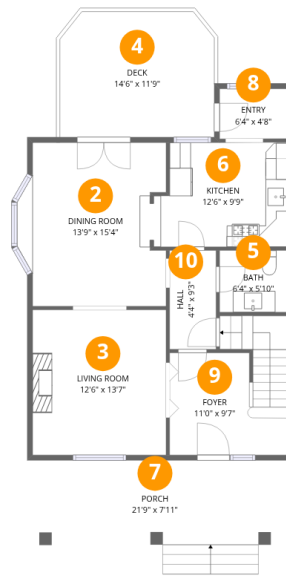
Total: 0sqft

Excluded: 699sqft

#		Dimensions	sqft	Counted as living area
1	Basement	23'10" x 29'4"	696 sq. ft	No

Home data report

389 Ambard Ave, Pittsburgh, PA, US



Room dimensions

Floor 2

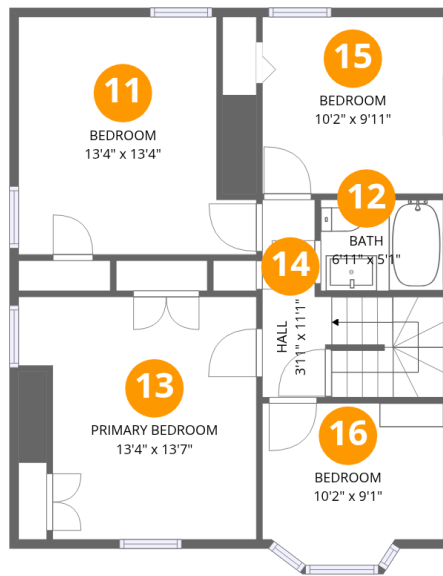
Total: 742 sqft

Excluded: 339 sqft

#		Dimensions	sqft	Counted as living area
2	Dining Room	13'9" x 15'4"	195 sq. ft	Yes
3	Living Room	12'6" x 13'7"	171 sq. ft	Yes
4	Deck	14'6" x 11'9"	166 sq. ft	No
5	Bath	6'4" x 5'10"	37 sq. ft	Yes
6	Kitchen	12'6" x 9'9"	115 sq. ft	Yes
7	Porch	21'9" x 7'11"	173 sq. ft	No
8	Entry	6'4" x 4'8"	30 sq. ft	Yes
9	Foyer	11'0" x 9'7"	126 sq. ft	Yes
10	Hall	4'4" x 9'3"	40 sq. ft	Yes

Home data report

389 Ambard Ave, Pittsburgh, PA, US

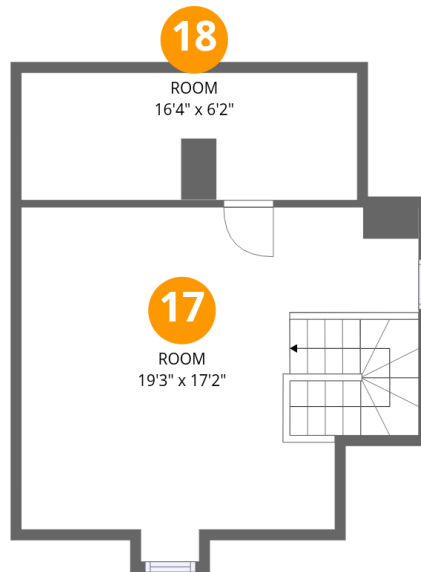


Room dimensions

Floor 3

Total:707sqft Excluded: 0sqft

#		Dimensions	sqft	Counted as living area
11	Bedroom	13'4" x 13'4"	155 sq. ft	Yes
12	Bath	6'11" x 5'1"	35 sq. ft	Yes
13	Primary Bedroom	13'4" x 13'7"	163 sq. ft	Yes
14	Hall	3'11" x 11'1"	71 sq. ft	Yes
15	Bedroom	10'2" x 9'11"	101 sq. ft	Yes
16	Bedroom	10'2" x 9'1"	86 sq. ft	Yes



Room dimensions

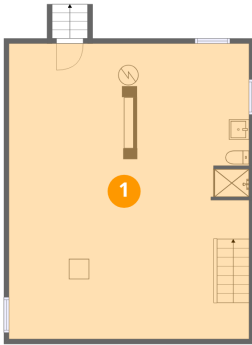
Floor 4

Total: 107sqft

Excluded: 288sqft

#		Dimensions	sqft	Counted as living area
17	Room	19'3" x 17'2"	288 sq. ft	No
18	Room	16'4" x 6'2"	101 sq. ft	Yes

1 Floor 1 - Basement



Dimensions: 23'10" x 29'4"
Area: 696 sq. ft
Counted as living area: No

Heated: Yes
Finished: No
Enclosed: Yes
Contiguous: Yes
Permitted: Yes
Wet space: No
Addition: No
Conversion: No

2 Floor 2 - Dining Room



Dimensions: 13'9" x 15'4"
Area: 195 sq. ft
Counted as living area: Yes

Heated: Yes
Finished: Yes
Enclosed: Yes
Contiguous: Yes
Permitted: Yes
Wet space: No
Addition: No
Conversion: No

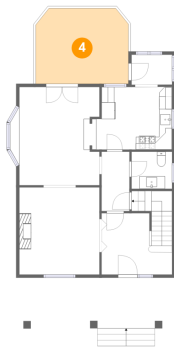
3 Floor 2 - Living Room



Dimensions: 12'6" x 13'7"
Area: 171 sq. ft
Counted as living area: Yes

Heated: Yes
Finished: Yes
Enclosed: Yes
Contiguous: Yes
Permitted: Yes
Wet space: No
Addition: No
Conversion: No

4 Floor 2 - Deck



Dimensions: 14'6" x 11'9"
Area: 166 sq. ft
Counted as living area: No

Heated: No
Finished: No
Enclosed: No
Contiguous: Yes
Permitted: Yes
Wet space: No
Addition: No
Conversion: No

5 Floor 2 - Bath



Dimensions: 6'4" x 5'10"
Area: 37 sq. ft
Counted as living area: Yes

Heated: Yes
Finished: Yes
Enclosed: Yes
Contiguous: Yes
Permitted: Yes
Wet space: Yes
Addition: No
Conversion: No

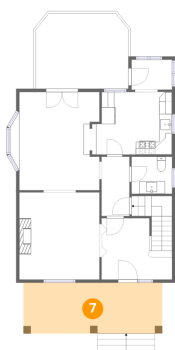
6 Floor 2 - Kitchen



Dimensions: 12'6" x 9'9"
Area: 115 sq. ft
Counted as living area: Yes

Heated: Yes
Finished: Yes
Enclosed: Yes
Contiguous: Yes
Permitted: Yes
Wet space: No
Addition: No
Conversion: No

7 Floor 2 - Porch



Dimensions: 21'9" x 7'11"
Area: 173 sq. ft
Counted as living area: No

Heated: No
Finished: No
Enclosed: No
Contiguous: Yes
Permitted: Yes
Wet space: No
Addition: No
Conversion: No

8 Floor 2 - Entry



Dimensions: 6'4" x 4'8"
Area: 30 sq. ft
Counted as living area: Yes

Heated: Yes
Finished: Yes
Enclosed: Yes
Contiguous: Yes
Permitted: Yes
Wet space: No
Addition: No
Conversion: No

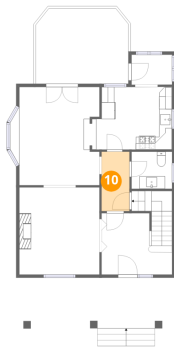
9 Floor 2 - Foyer



Dimensions: 11'0" x 9'7"
Area: 126 sq. ft
Counted as living area: Yes

Heated: Yes
Finished: Yes
Enclosed: Yes
Contiguous: Yes
Permitted: Yes
Wet space: No
Addition: No
Conversion: No

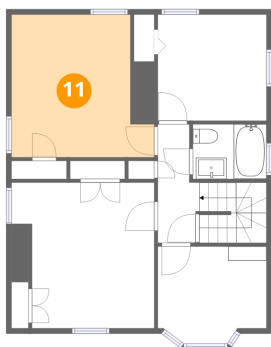
10 Floor 2 - Hall



Dimensions: 4'4" x 9'3"
Area: 40 sq. ft
Counted as living area: Yes

Heated: Yes
Finished: Yes
Enclosed: Yes
Contiguous: Yes
Permitted: Yes
Wet space: No
Addition: No
Conversion: No

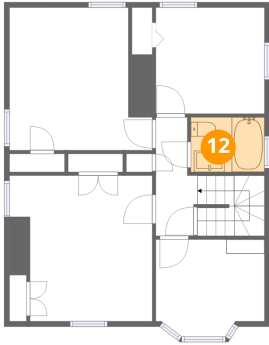
11 Floor 3 - Bedroom



Dimensions: 13'4" x 13'4"
Area: 155 sq. ft
Counted as living area: Yes

Heated: Yes
Finished: Yes
Enclosed: Yes
Contiguous: Yes
Permitted: Yes
Wet space: No
Addition: No
Conversion: No

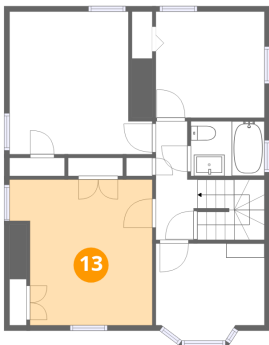
12 Floor 3 - Bath



Dimensions: 6'11" x 5'1"
Area: 35 sq. ft
Counted as living area: Yes

Heated: Yes
Finished: Yes
Enclosed: Yes
Contiguous: Yes
Permitted: Yes
Wet space: Yes
Addition: No
Conversion: No

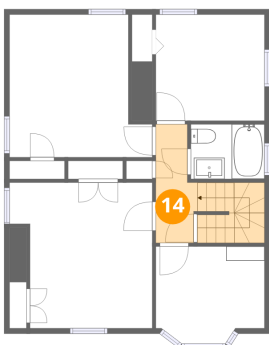
13 Floor 3 - Primary Bedroom



Dimensions: 13'4" x 13'7"
Area: 163 sq. ft
Counted as living area: Yes

Heated: Yes
Finished: Yes
Enclosed: Yes
Contiguous: Yes
Permitted: Yes
Wet space: No
Addition: No
Conversion: No

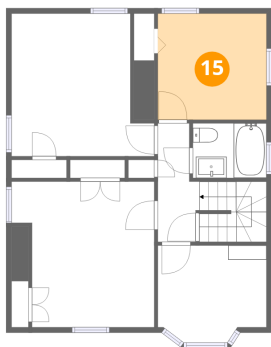
14 Floor 3 - Hall



Dimensions: 3'11" x 11'1"
Area: 71 sq. ft
Counted as living area: Yes

Heated: Yes
Finished: Yes
Enclosed: Yes
Contiguous: Yes
Permitted: Yes
Wet space: No
Addition: No
Conversion: No

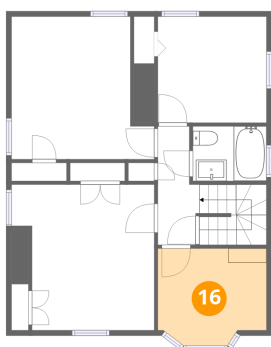
15 Floor 3 - Bedroom



Dimensions: 10'2" x 9'11"
Area: 101 sq. ft
Counted as living area: Yes

Heated: Yes
Finished: Yes
Enclosed: Yes
Contiguous: Yes
Permitted: Yes
Wet space: No
Addition: No
Conversion: No

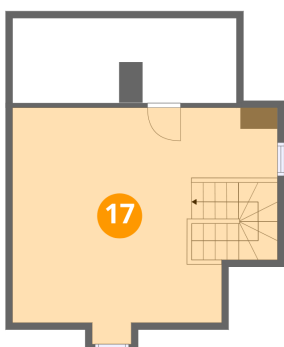
16 Floor 3 - Bedroom



Dimensions: 10'2" x 9'1"
Area: 86 sq. ft
Counted as living area: Yes

Heated: Yes
Finished: Yes
Enclosed: Yes
Contiguous: Yes
Permitted: Yes
Wet space: No
Addition: No
Conversion: No

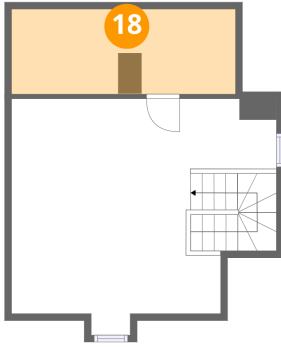
17 Floor 4 - Room



Dimensions: 19'3" x 17'2"
Area: 288 sq. ft
Counted as living area: No

Heated: Yes
Finished: Yes
Enclosed: Yes
Contiguous: Yes
Permitted: Yes
Wet space: No
Addition: No
Conversion: No

18 Floor 4 - Room



Dimensions: 16'4" x 6'2"
Area: 101 sq. ft
Counted as living area: Yes

Heated: Yes
Finished: Yes
Enclosed: Yes
Contiguous: Yes
Permitted: Yes
Wet space: No
Addition: No
Conversion: No