

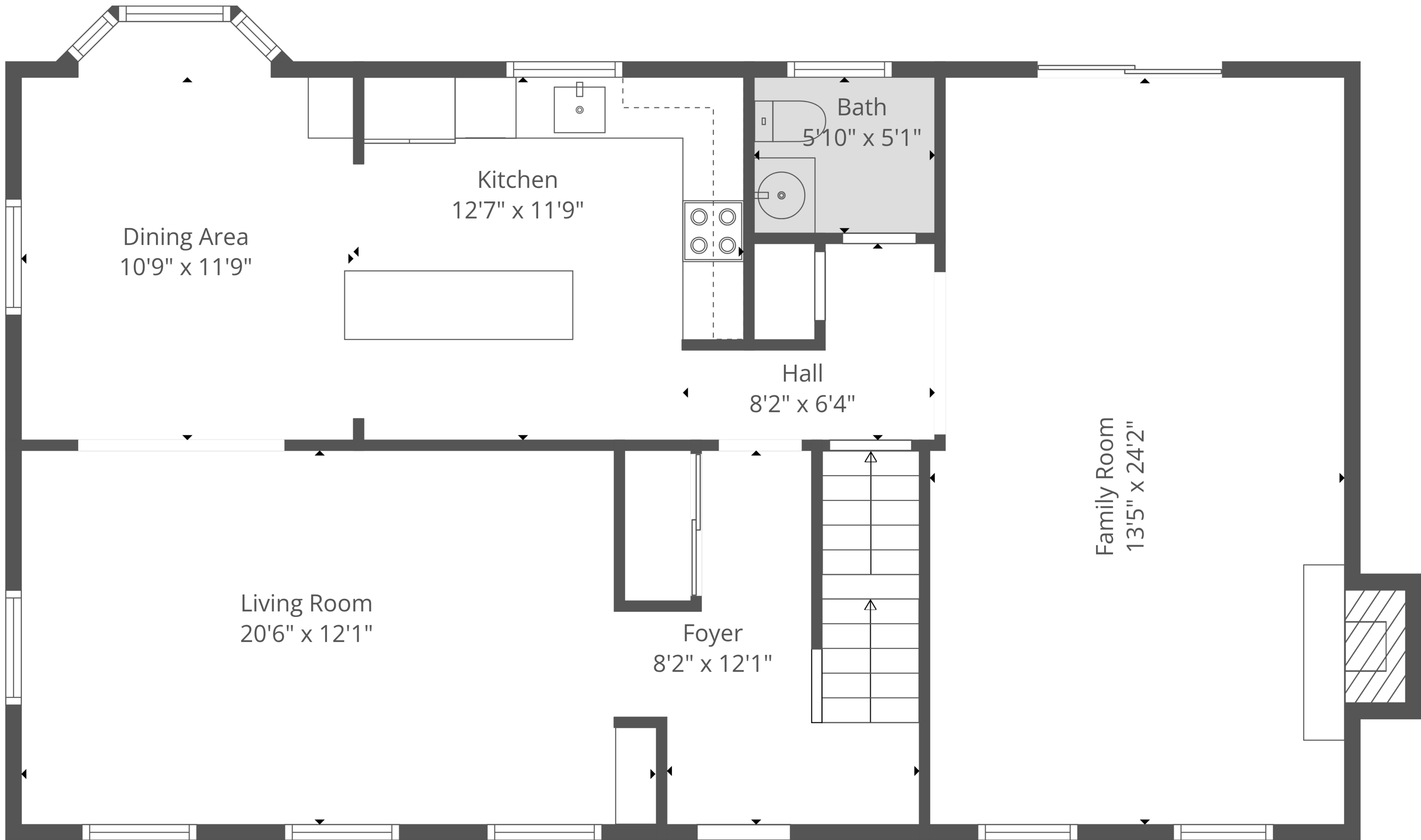
Garage
21'3" x 24'1"

Basement
20'11" x 24'1"

TOTAL: 1738 sq. ft

Basement: 0 sq. ft, 1st floor: 1036 sq. ft, 2nd floor: 702 sq. ft

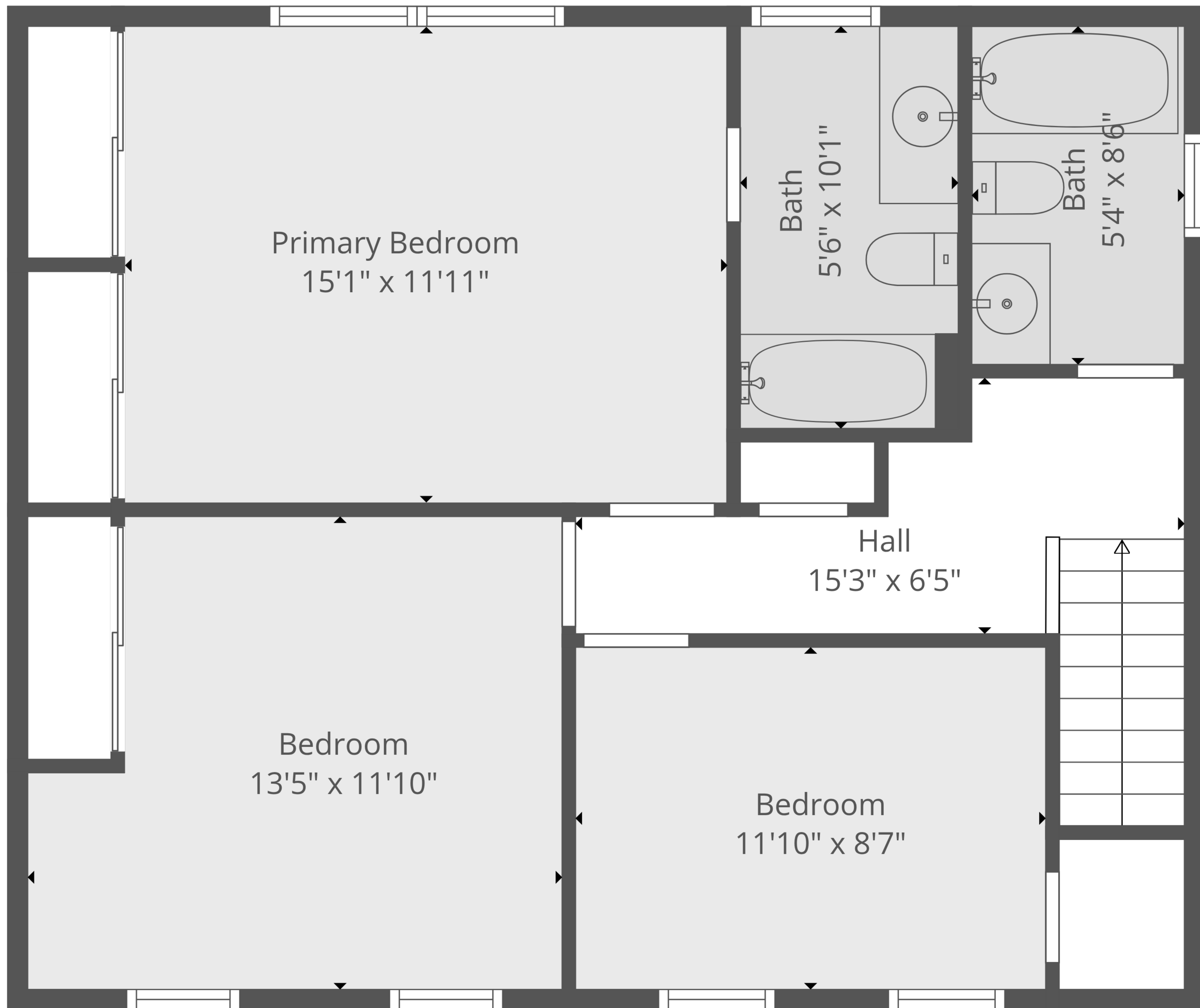
EXCLUDED AREAS: BASEMENT: 507 sq. ft, GARAGE: 515 sq. ft, BAY WINDOW: 11 sq. ft,
FIREPLACE: 9 sq. ft, WALLS: 200 sq. ft



TOTAL: 1738 sq. ft

Basement: 0 sq. ft, 1st floor: 1036 sq. ft, 2nd floor: 702 sq. ft

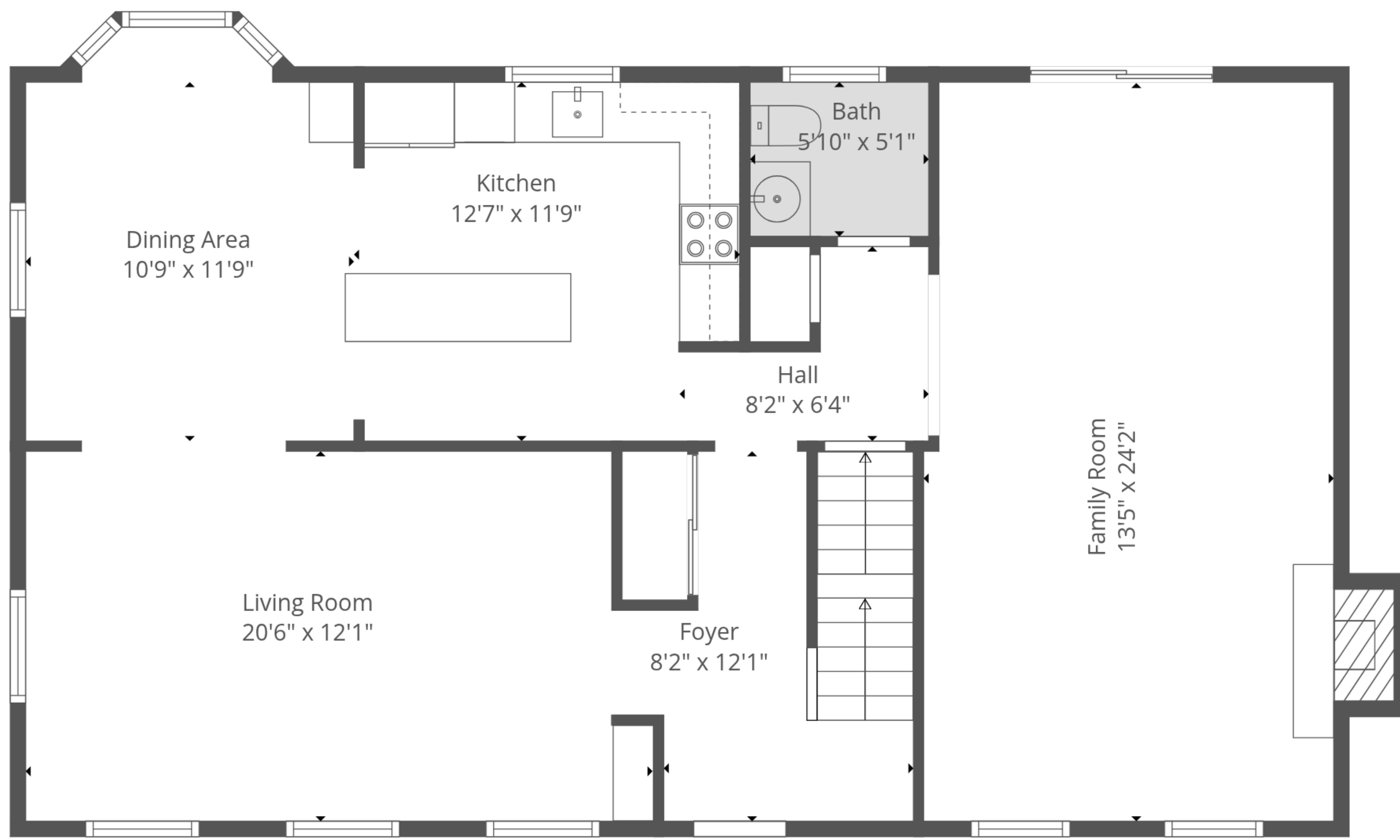
EXCLUDED AREAS: BASEMENT: 507 sq. ft, GARAGE: 515 sq. ft, BAY WINDOW: 11 sq. ft,
 FIREPLACE: 9 sq. ft, WALLS: 200 sq. ft



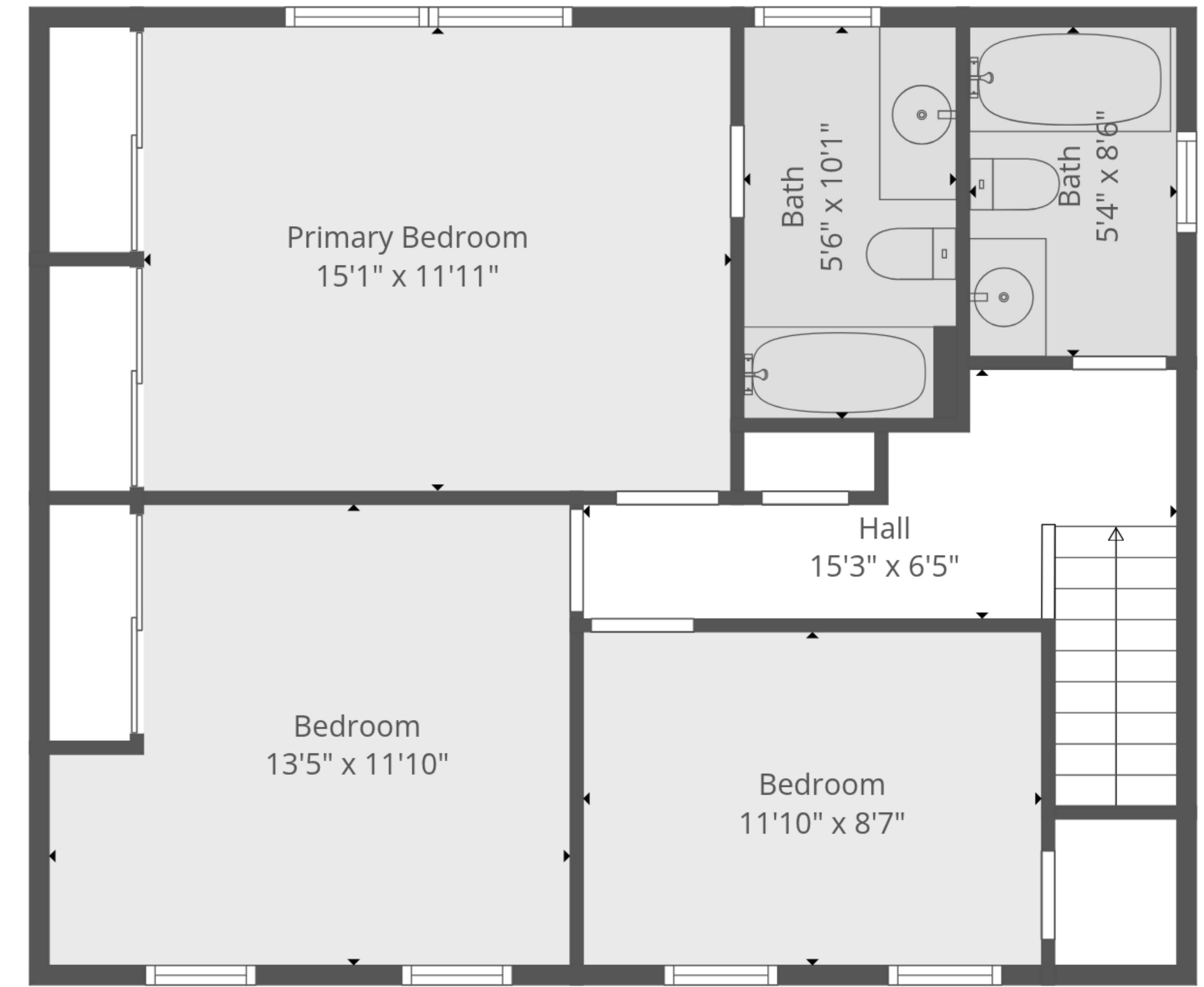
TOTAL: 1738 sq. ft

Basement: 0 sq. ft, 1st floor: 1036 sq. ft, 2nd floor: 702 sq. ft

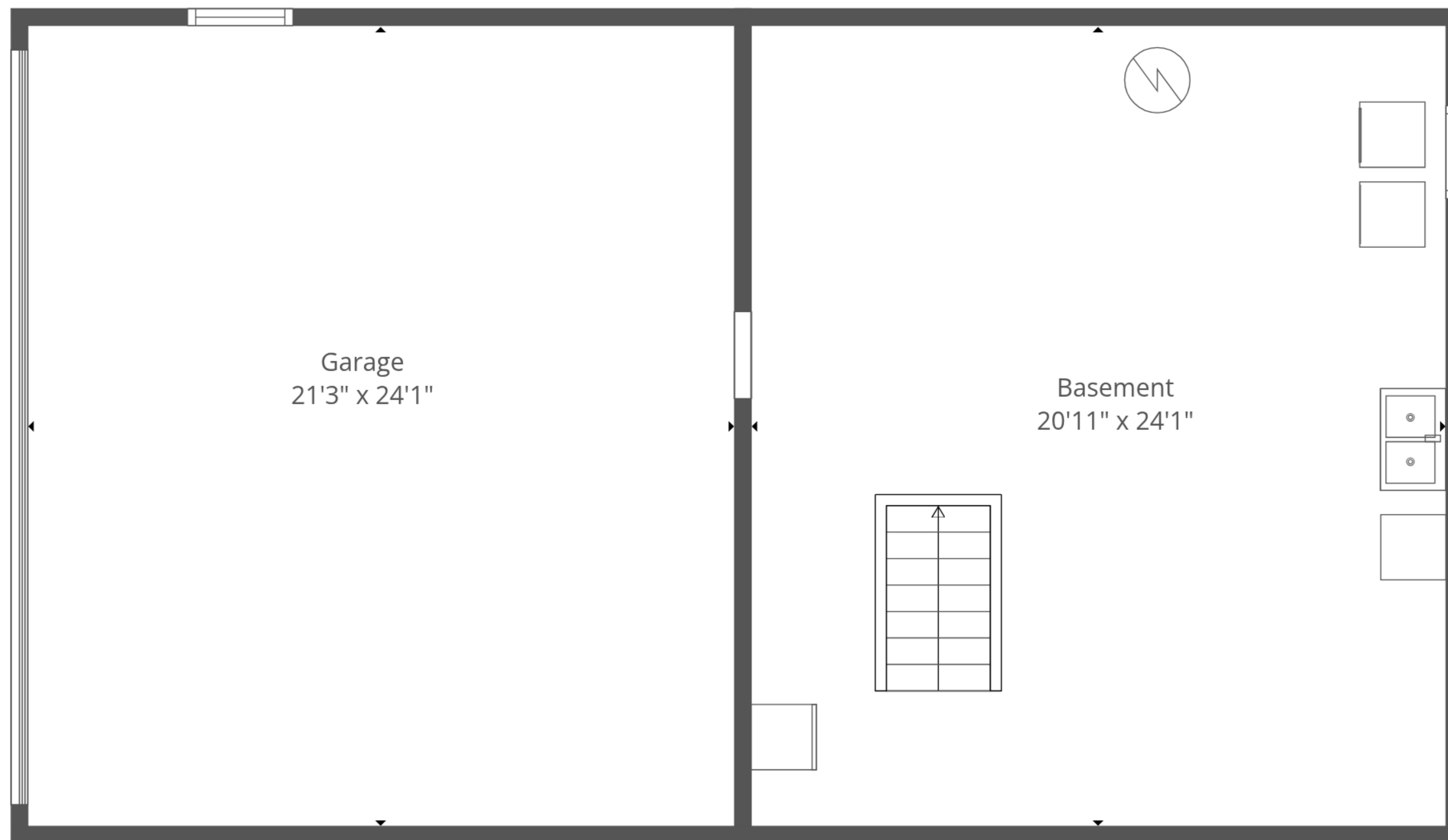
EXCLUDED AREAS: BASEMENT: 507 sq. ft, GARAGE: 515 sq. ft, BAY WINDOW: 11 sq. ft,
 FIREPLACE: 9 sq. ft, WALLS: 200 sq. ft



1st Floor



2nd Floor



Basement

TOTAL: 1738 sq. ft
 Basement: 0 sq. ft, 1st floor: 1036 sq. ft, 2nd floor: 702 sq. ft
 EXCLUDED AREAS: BASEMENT: 507 sq. ft, GARAGE: 515 sq. ft, BAY WINDOW: 11 sq. ft,
 FIREPLACE: 9 sq. ft, WALLS: 200 sq. ft