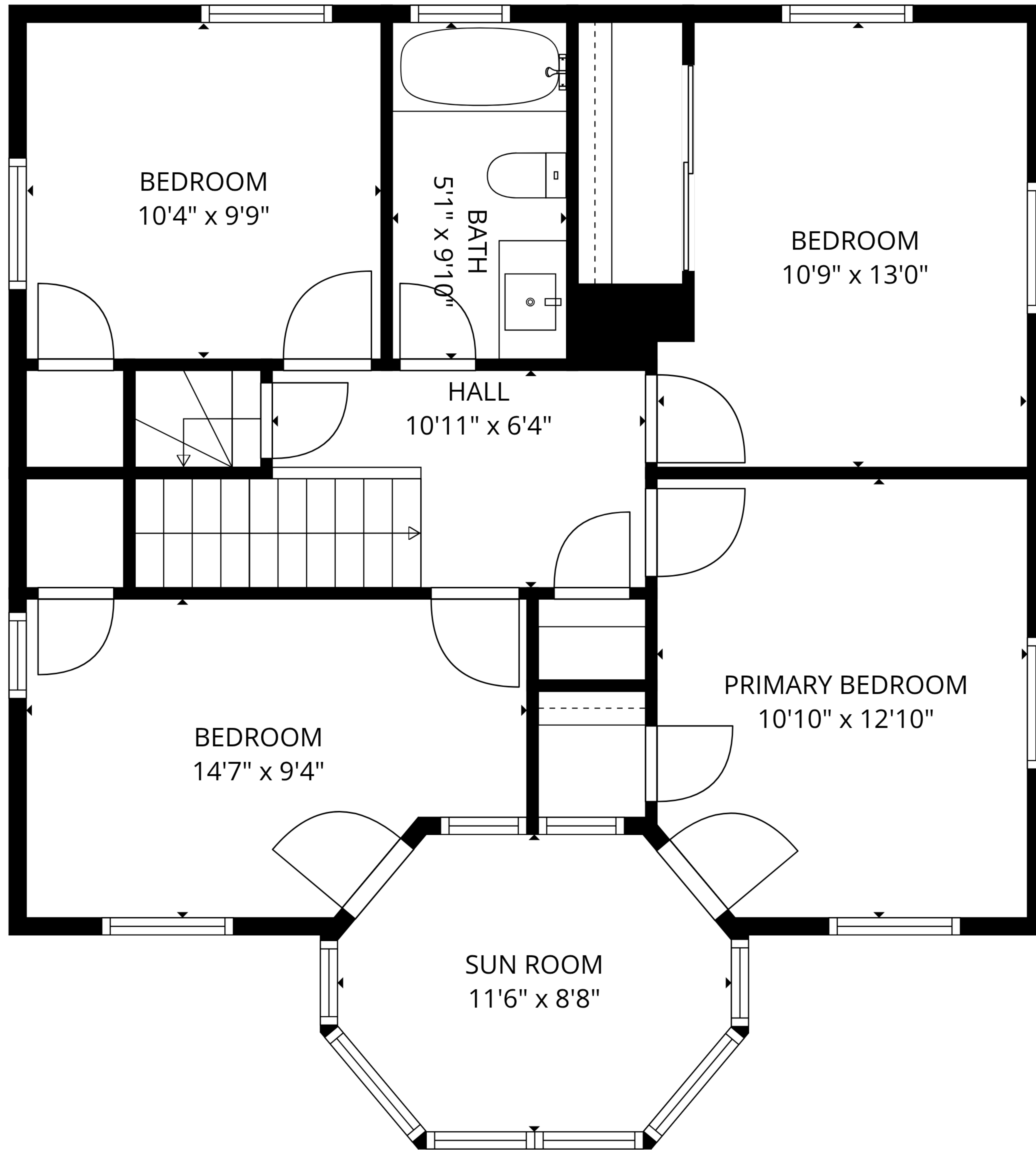


**TOTAL: 1904 sq. ft**

1st floor: 791 sq. ft, 2nd floor: 828 sq. ft, 3rd floor: 285 sq. ft  
 EXCLUDED AREAS: PORCH: 231 sq. ft, WALLS: 159 sq. ft



Floor Plans are provided by HouseSnappers.com. Measurements are deemed highly reliable but not guaranteed.

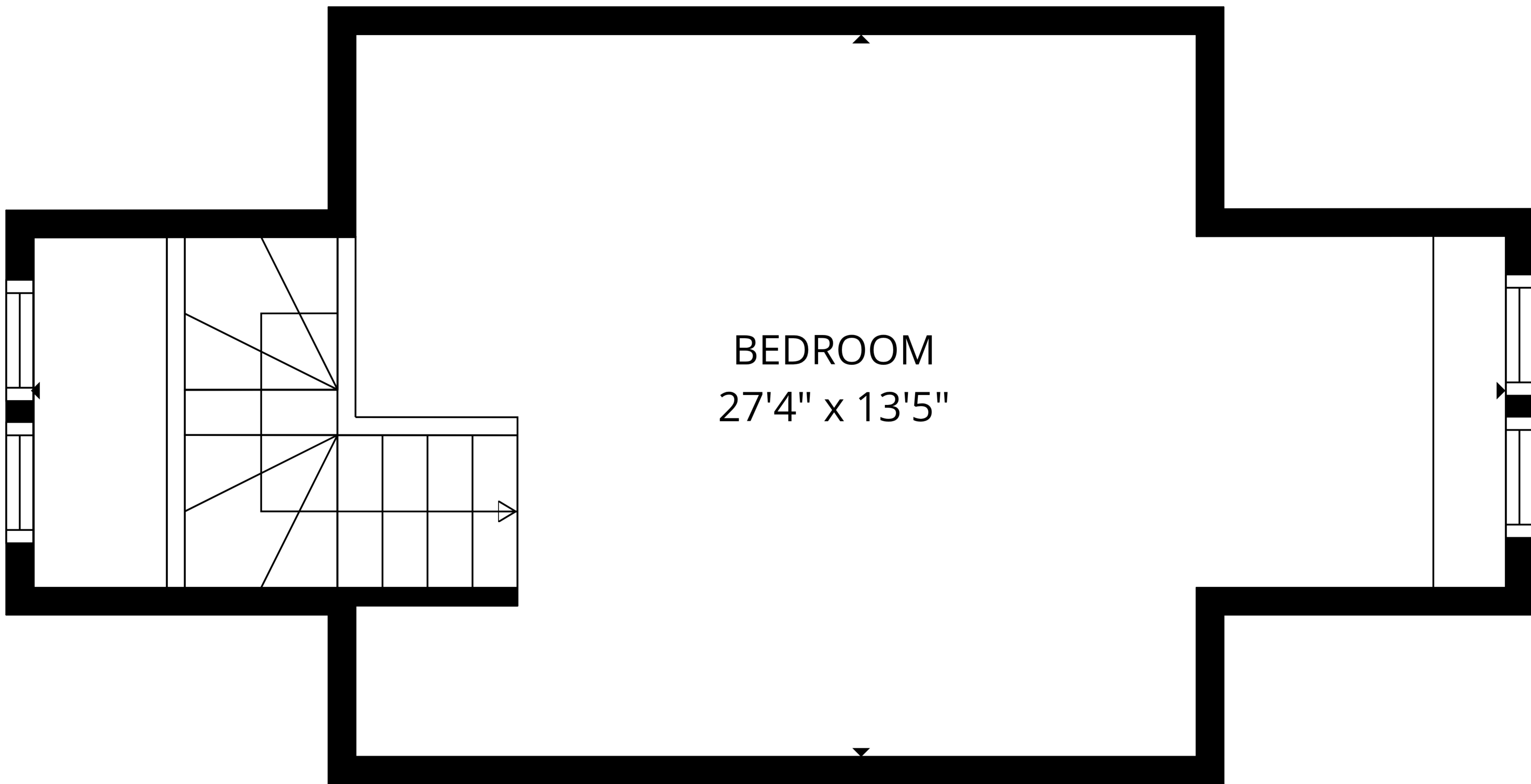


**TOTAL: 1904 sq. ft**

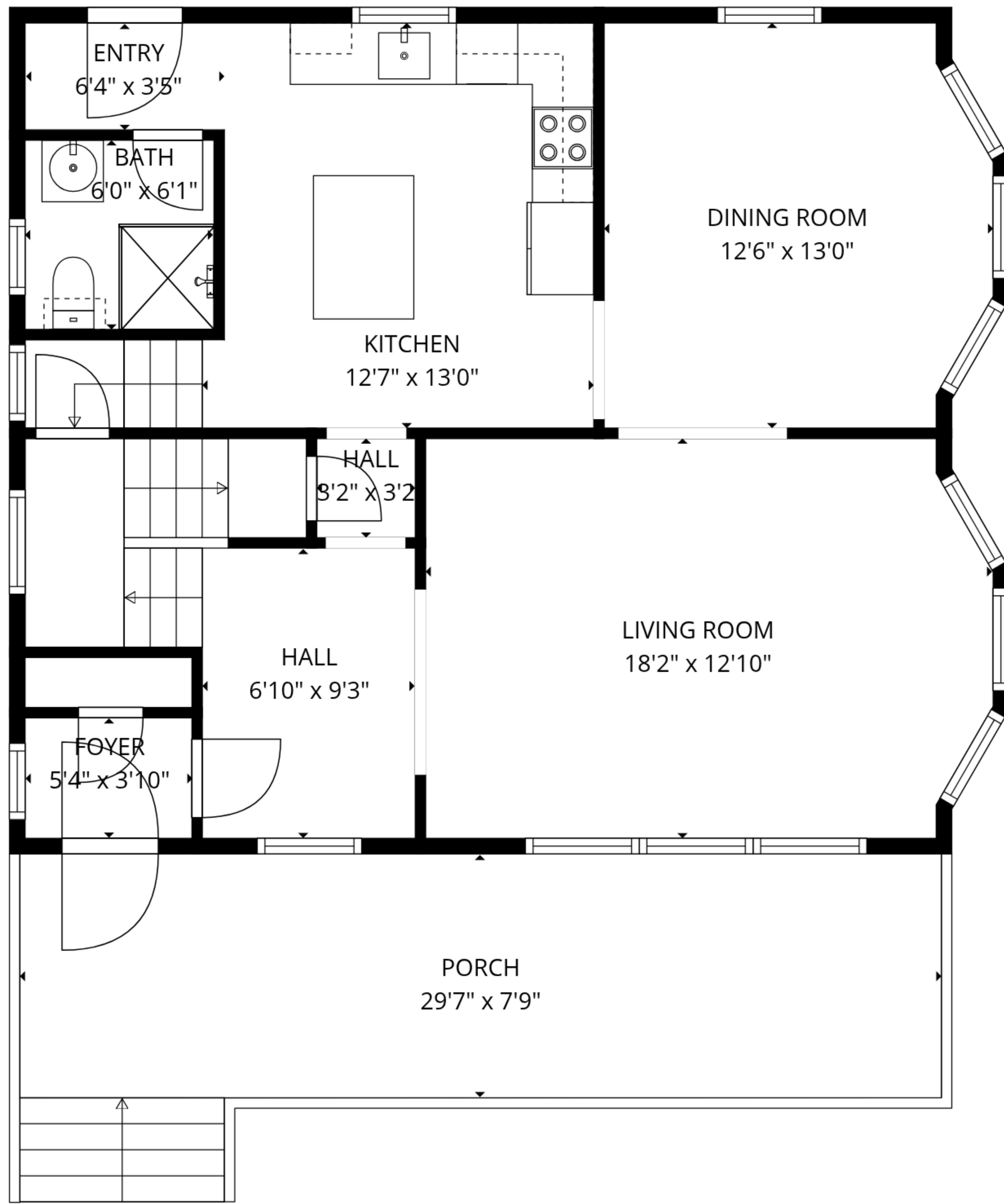
1st floor: 791 sq. ft, 2nd floor: 828 sq. ft, 3rd floor: 285 sq. ft

EXCLUDED AREAS: PORCH: 231 sq. ft, WALLS: 159 sq. ft

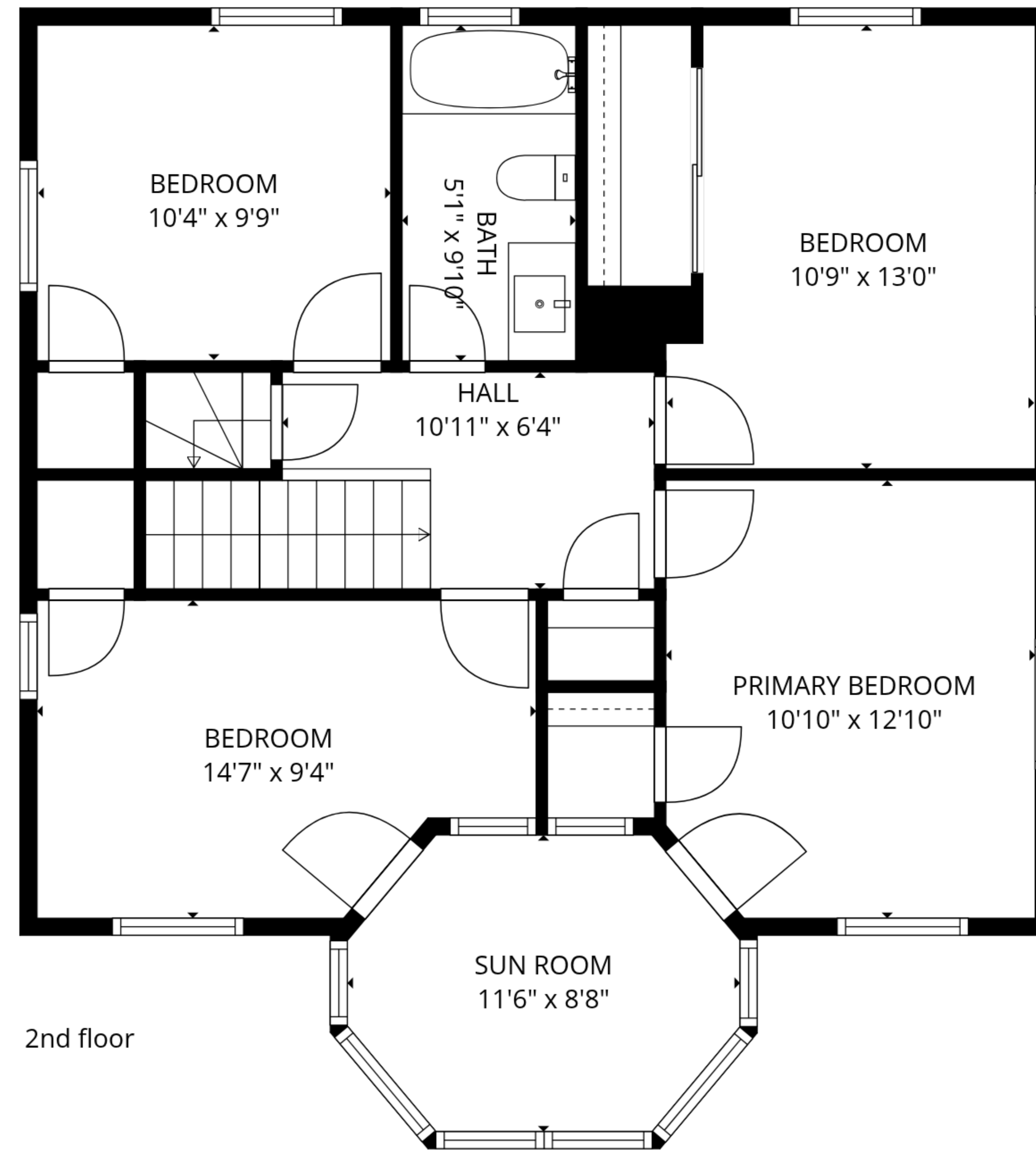




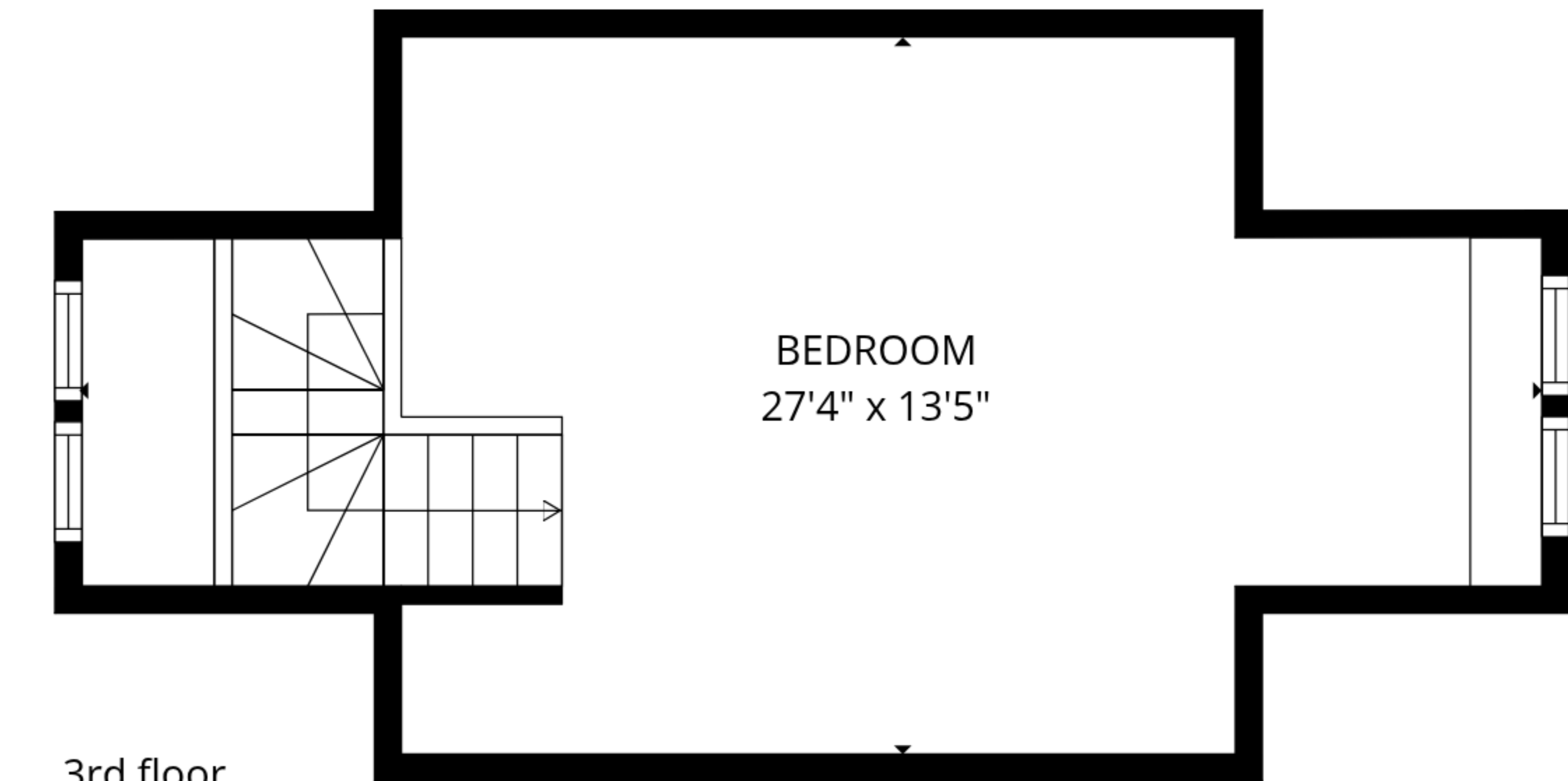
BEDROOM  
27'4" x 13'5"



1st floor



2nd floor



3rd floor

**TOTAL: 1904 sq. ft**

1st floor: 791 sq. ft, 2nd floor: 828 sq. ft, 3rd floor: 285 sq. ft  
 EXCLUDED AREAS: PORCH: 231 sq. ft, WALLS: 159 sq. ft

