

Home data report

929 Milner Pass Rd, Severance, CO, US



Total Area: 2227 sq. ft

Basement: 352 sq. ft, 1st Floor: 860 sq. ft, 2nd Floor: 1015 sq. ft

Excluded: Utility 437 sq. ft, Garage 532 sq. ft, Open to below 300 sq. ft, Walls: 250 sq. ft

Property summary

 **3** Floors

 **5** Bedrooms

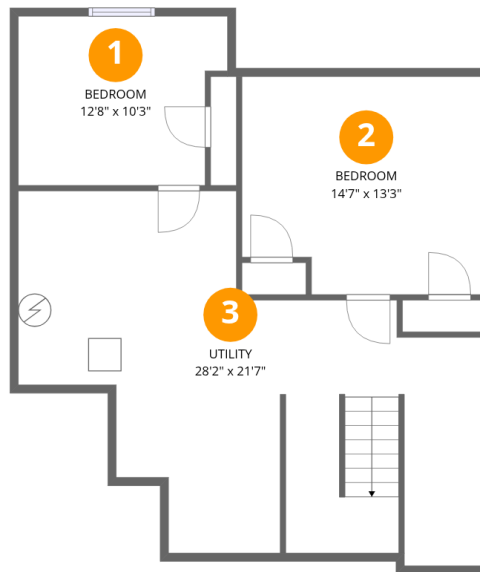
 **2** Bathrooms

Home data report

929 Milner Pass Rd,Severance,CO,US

 **1**
Half baths

 **1**
Garages



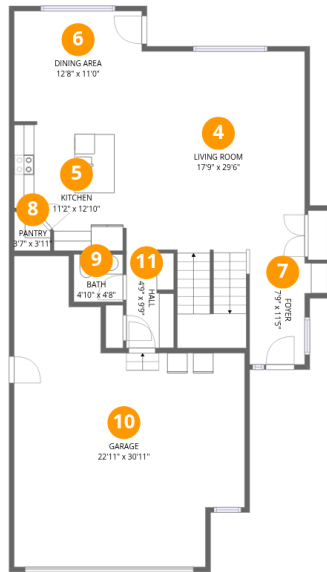
Room dimensions

Floor 1 Below grade

Total:352sqft

Excluded: 437sqft

#		Dimensions	sqft	Counted as living area
1	Bedroom	12'8" x 10'3"	130 sq. ft	Yes
2	Bedroom	14'7" x 13'3"	193 sq. ft	Yes
3	Utility	28'2" x 21'7"	607 sq. ft	No



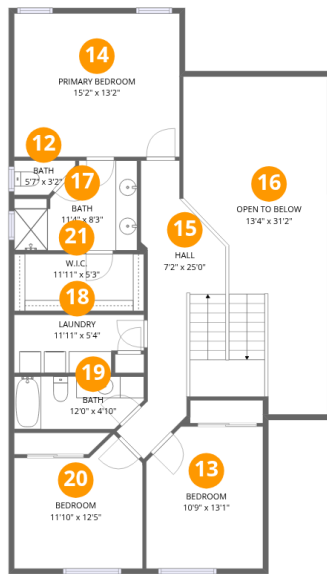
Room dimensions

Floor 2

Total:860sqft

Excluded: 532sqft

#		Dimensions	sqft	Counted as living area
4	Living Room	17'9" x 29'6"	523 sq. ft	Yes
5	Kitchen	11'2" x 12'10"	143 sq. ft	Yes
6	Dining Area	12'8" x 11'0"	139 sq. ft	Yes
7	Foyer	7'9" x 11'5"	89 sq. ft	Yes
8	Pantry	3'7" x 3'11"	14 sq. ft	Yes
9	Bath	4'10" x 4'8"	23 sq. ft	Yes
10	Garage	22'11" x 30'11"	710 sq. ft	No
11	Hall	4'9" x 9'9"	46 sq. ft	Yes



Room dimensions

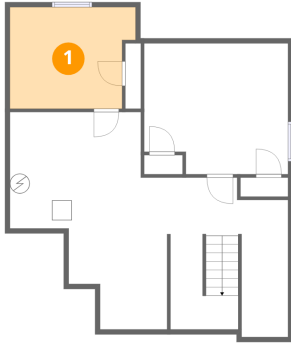
Floor 3

Total:1015sqft

Excluded: 300sqft

#		Dimensions	sqft	Counted as living area
12	Bath	5'7" x 3'2"	18 sq. ft	Yes
13	Bedroom	10'9" x 13'1"	141 sq. ft	Yes
14	Primary Bedroom	15'2" x 13'2"	200 sq. ft	Yes
15	Hall	7'2" x 25'0"	179 sq. ft	Yes
16	Open To Below	13'4" x 31'2"	416 sq. ft	No
17	Bath	11'4" x 8'3"	93 sq. ft	Yes
18	Laundry	11'11" x 5'4"	64 sq. ft	Yes
19	Bath	12'0" x 4'10"	58 sq. ft	Yes
20	Bedroom	11'10" x 12'5"	146 sq. ft	Yes
21	W.I.C.	11'11" x 5'3"	63 sq. ft	Yes

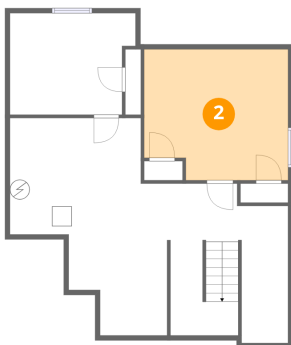
1 Floor 1 - Bedroom



Dimensions: 12'8" x 10'3"
Area: 130 sq. ft
Counted as living area: No

Heated: Yes
Finished: Yes
Enclosed: Yes
Contiguous: No
Permitted: Yes
Wet space: No
Addition: No
Conversion: No

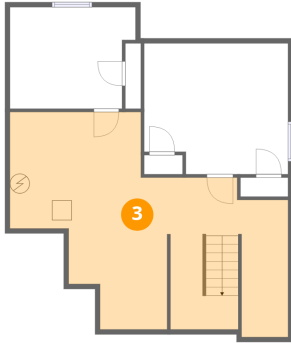
2 Floor 1 - Bedroom



Dimensions: 14'7" x 13'3"
Area: 193 sq. ft
Counted as living area: Yes

Heated: Yes
Finished: Yes
Enclosed: Yes
Contiguous: Yes
Permitted: Yes
Wet space: No
Addition: No
Conversion: No

3 Floor 1 - Utility



Dimensions: 28'2" x 21'7"
Area: 607 sq. ft
Counted as living area: No

Heated: Yes
Finished: No
Enclosed: Yes
Contiguous: Yes
Permitted: Yes
Wet space: No
Addition: No
Conversion: No

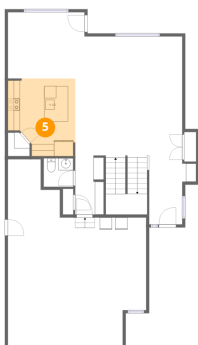
4 Floor 2 - Living Room



Dimensions: 17'9" x 29'6"
Area: 523 sq. ft
Counted as living area: Yes

Heated: Yes
Finished: Yes
Enclosed: Yes
Contiguous: Yes
Permitted: Yes
Wet space: No
Addition: No
Conversion: No

5 Floor 2 - Kitchen



Dimensions: 11'2" x 12'10"
Area: 143 sq. ft
Counted as living area: Yes

Heated: Yes
Finished: Yes
Enclosed: Yes
Contiguous: Yes
Permitted: Yes
Wet space: No
Addition: No
Conversion: No

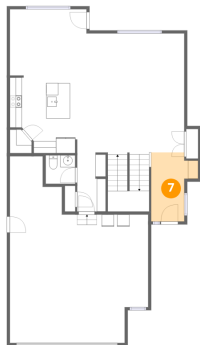
6 Floor 2 - Dining Area



Dimensions: 12'8" x 11'0"
Area: 139 sq. ft
Counted as living area: Yes

Heated: Yes
Finished: Yes
Enclosed: Yes
Contiguous: Yes
Permitted: Yes
Wet space: No
Addition: No
Conversion: No

7 Floor 2 - Foyer



Dimensions: 7'9" x 11'5"
Area: 89 sq. ft
Counted as living area: Yes

Heated: Yes
Finished: Yes
Enclosed: Yes
Contiguous: Yes
Permitted: Yes
Wet space: No
Addition: No
Conversion: No

8 Floor 2 - Pantry



Dimensions: 3'7" x 3'11"
Area: 14 sq. ft
Counted as living area: Yes

Heated: Yes
Finished: Yes
Enclosed: Yes
Contiguous: Yes
Permitted: Yes
Wet space: No
Addition: No
Conversion: No

9 Floor 2 - Bath



Dimensions: 4'10" x 4'8"
Area: 23 sq. ft
Counted as living area: Yes

Heated: Yes
Finished: Yes
Enclosed: Yes
Contiguous: Yes
Permitted: Yes
Wet space: Yes
Addition: No
Conversion: No

10 Floor 2 - Garage



Dimensions: 22'11" x 30'11"
Area: 710 sq. ft
Counted as living area: No

Heated: No
Finished: No
Enclosed: Yes
Contiguous: Yes
Permitted: Yes
Wet space: No
Addition: No
Conversion: No

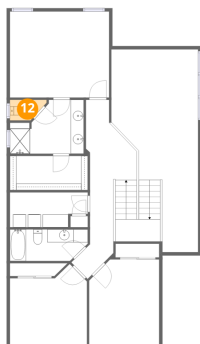
11 Floor 2 - Hall



Dimensions: 4'9" x 9'9"
Area: 46 sq. ft
Counted as living area: Yes

Heated: Yes
Finished: Yes
Enclosed: Yes
Contiguous: Yes
Permitted: Yes
Wet space: No
Addition: No
Conversion: No

12 Floor 3 - Bath



Dimensions: 5'7" x 3'2"
Area: 18 sq. ft
Counted as living area: Yes

Heated: Yes
Finished: Yes
Enclosed: Yes
Contiguous: Yes
Permitted: Yes
Wet space: Yes
Addition: No
Conversion: No

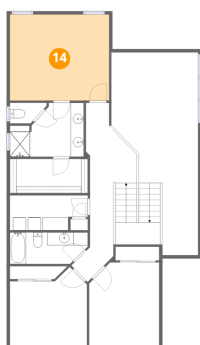
13 Floor 3 - Bedroom



Dimensions: 10'9" x 13'1"
Area: 141 sq. ft
Counted as living area: Yes

Heated: Yes
Finished: Yes
Enclosed: Yes
Contiguous: Yes
Permitted: Yes
Wet space: No
Addition: No
Conversion: No

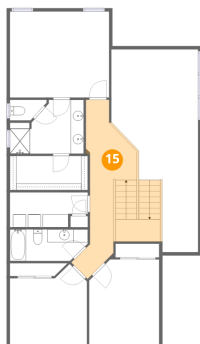
14 Floor 3 - Primary Bedroom



Dimensions: 15'2" x 13'2"
Area: 200 sq. ft
Counted as living area: Yes

Heated: Yes
Finished: Yes
Enclosed: Yes
Contiguous: Yes
Permitted: Yes
Wet space: No
Addition: No
Conversion: No

15 Floor 3 - Hall



Dimensions: 7'2" x 25'0"
Area: 179 sq. ft
Counted as living area: Yes

Heated: Yes
Finished: Yes
Enclosed: Yes
Contiguous: Yes
Permitted: Yes
Wet space: No
Addition: No
Conversion: No

16 Floor 3 - Open To Below



Dimensions: 13'4" x 31'2"
Area: 416 sq. ft
Counted as living area: No

Heated: No
Finished: No
Enclosed: No
Contiguous: Yes
Permitted: No
Wet space: No
Addition: No
Conversion: No

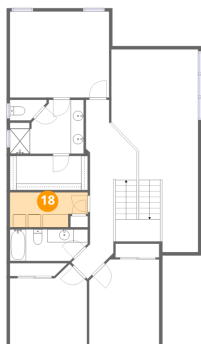
17 Floor 3 - Bath



Dimensions: 11'4" x 8'3"
Area: 93 sq. ft
Counted as living area: Yes

Heated: Yes
Finished: Yes
Enclosed: Yes
Contiguous: Yes
Permitted: Yes
Wet space: Yes
Addition: No
Conversion: No

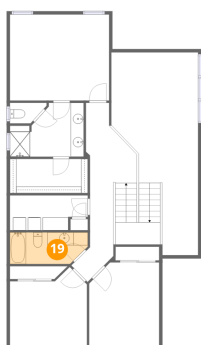
18 Floor 3 - Laundry



Dimensions: 11'11" x 5'4"
Area: 64 sq. ft
Counted as living area: Yes

Heated: Yes
Finished: Yes
Enclosed: Yes
Contiguous: Yes
Permitted: Yes
Wet space: No
Addition: No
Conversion: No

19 Floor 3 - Bath



Dimensions: 12'0" x 4'10"
Area: 58 sq. ft
Counted as living area: Yes

Heated: Yes
Finished: Yes
Enclosed: Yes
Contiguous: Yes
Permitted: Yes
Wet space: Yes
Addition: No
Conversion: No

20 Floor 3 - Bedroom



Dimensions: 11'10" x 12'5"
Area: 146 sq. ft
Counted as living area: Yes

Heated: Yes
Finished: Yes
Enclosed: Yes
Contiguous: Yes
Permitted: Yes
Wet space: No
Addition: No
Conversion: No

21 Floor 3 - W.I.C.



Dimensions: 11'11" x 5'3"
Area: 63 sq. ft
Counted as living area: Yes

Heated: Yes
Finished: Yes
Enclosed: Yes
Contiguous: Yes
Permitted: Yes
Wet space: No
Addition: No
Conversion: No