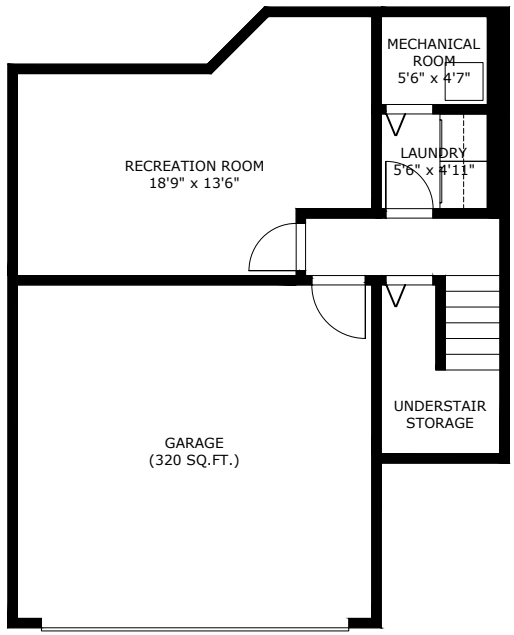


# 1-1216 Johnson St

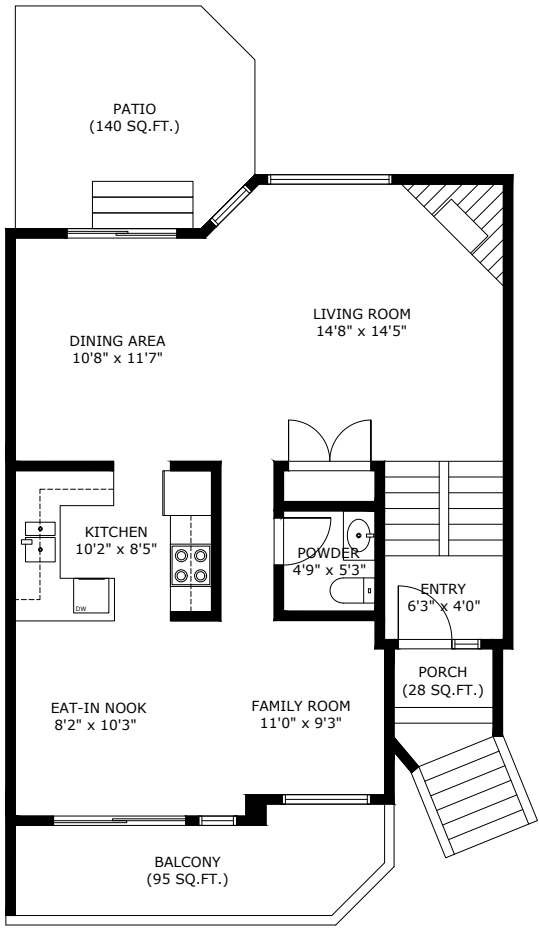
Coquitlam BC V3B 4T2

Lower Level Area: 430 SQ.FT.  
 Main Level Area: 790 SQ.FT.  
 Upper Level Area: 835 SQ.FT.  
**Total Area 2,055 SQ.FT.**  
 Garage Area: 320 SQ.FT.

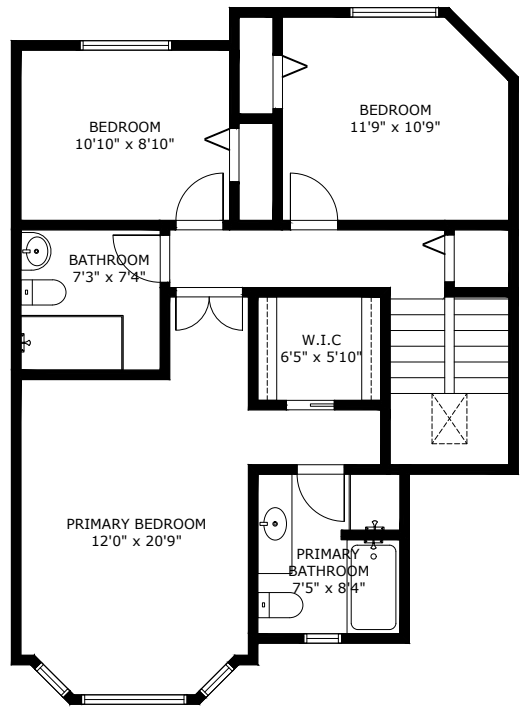
3  BEDROOMS  
 3  BATHROOMS  
 2,055  TOTAL SQ.FT.



Lower Level Area:  
Ceiling Height: 8'0"



Main Level Area:  
Ceiling Height: 8'0"



Upper Level Area:  
Ceiling Height: 8'0"

## 1-1216 JOHNSON ST COQUITLAM BC V3B 4T2

Measurements are approximate and may not be to scale. Gross measurements provided by agent.  
 The floor plan illustration is not suitable for construction/architectural purposes.  
 This communication is not intended to cause or induce breach of an existing agency agreement

