

Home report

2023 Berkley Avenue Southwest, Raleigh Court, Roanoke,
Roanoke city, Virginia, United States, 24015



Total Area: 2533 sq. ft

Below Ground: 249 sq. ft, Floor 2: 1170 sq. ft, Floor 3: 1114 sq. ft, Floor 4: 0 sq. ft
Excluded: Basement 917 sq. ft, Porch 222 sq. ft, Fireplace 13 sq. ft, W.I.C. 53 sq. ft, Low ceiling 507 sq. ft, Attic 424 sq. ft, Walls: 257 sq. ft

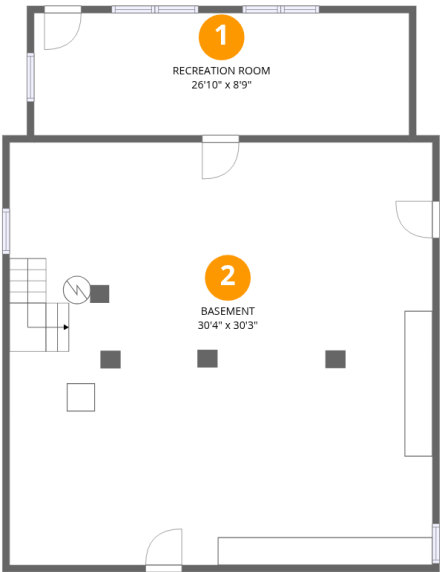
Property summary

 **4** Floors

 **4** Bedrooms

 **2** Bathrooms

2023 Berkley Avenue Southwest, Raleigh Court, Roanoke,
Roanoke city, Virginia, United States, 24015



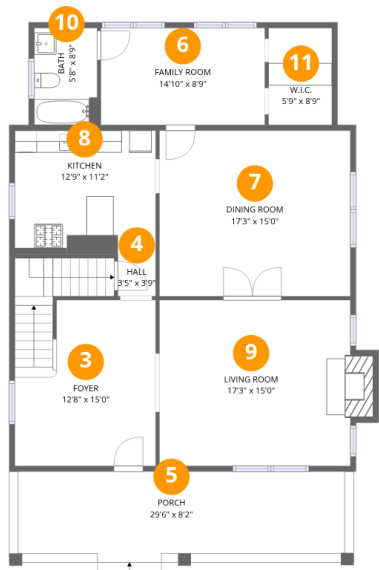
Room dimensions

Floor 1 Below ground Total:249sqft Excluded: 917sqft

#		Max Dimensions	sqft	Included
1	Recreation Room	26'10" x 8'9"	236 sq. ft	Yes
2	Basement	30'4" x 30'3"	917 sq. ft	No

Home report

2023 Berkley Avenue Southwest, Raleigh Court, Roanoke,
Roanoke city, Virginia, United States, 24015



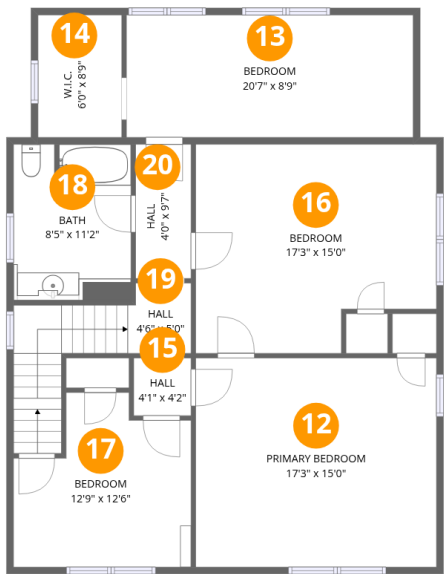
Room dimensions

Floor 2 Total:1170sqft Excluded: 235sqft

#		Max Dimensions	sqft	Included
3	Foyer	12'8" x 15'0"	221 sq. ft	Yes
4	Hall	3'5" x 3'9"	13 sq. ft	Yes
5	Porch	29'6" x 8'2"	222 sq. ft	No
6	Family Room	14'10" x 8'9"	130 sq. ft	Yes
7	Dining Room	17'3" x 15'0"	258 sq. ft	Yes
8	Kitchen	12'9" x 11'2"	142 sq. ft	Yes
9	Living Room	17'3" x 15'0"	270 sq. ft	Yes
10	Bath	5'8" x 8'9"	50 sq. ft	Yes
11	W.I.C.	5'9" x 8'9"	50 sq. ft	Yes

Home report

2023 Berkley Avenue Southwest, Raleigh Court, Roanoke,
Roanoke city, Virginia, United States, 24015

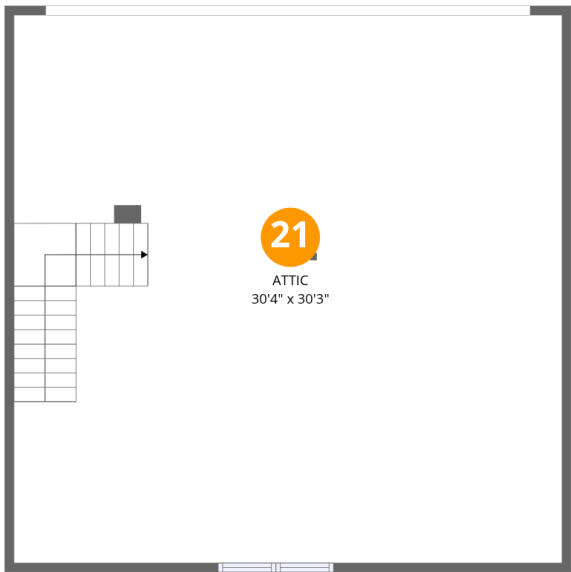


Room dimensions

Floor 3 Total:1114sqft Excluded: 53sqft

#		Max Dimensions	sqft	Included
12	Primary Bedroom	17'3" x 15'0"	258 sq. ft	Yes
13	Bedroom	20'7" x 8'9"	180 sq. ft	Yes
14	W.I.C.	6'0" x 8'9"	53 sq. ft	No
15	Hall	4'1" x 4'2"	17 sq. ft	Yes
16	Bedroom	17'3" x 15'0"	237 sq. ft	Yes
17	Bedroom	12'9" x 12'6"	132 sq. ft	Yes
18	Bath	8'5" x 11'2"	93 sq. ft	Yes
19	Hall	4'6" x 5'0"	75 sq. ft	Yes
20	Hall	4'0" x 9'7"	38 sq. ft	Yes

2023 Berkley Avenue Southwest, Raleigh Court, Roanoke,
Roanoke city, Virginia, United States, 24015



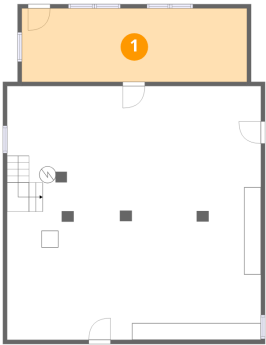
Room dimensions

Floor 4 Total:0sqft Excluded: 931sqft

#		Max Dimensions	sqft	Included
21	Attic	30'4" x 30'3"	424 sq. ft	No

2023 Berkley Avenue Southwest, Raleigh Court, Roanoke,
Roanoke city, Virginia, United States, 24015

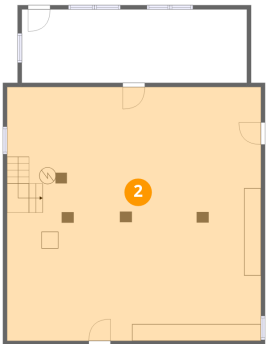
1 Floor 1 - Recreation Room



Max Dimensions: 26'10" x 8'9"
Calculated Area: 236 sq. ft
Included: Yes

Heated: Yes
Finished: Yes
Enclosed: Yes
Contiguous: Yes
Permitted: Yes
Wet space: No
Addition: No
Conversion: No

2 Floor 1 - Basement

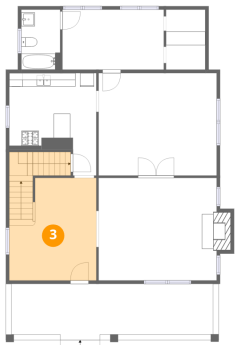


Max Dimensions: 30'4" x 30'3"
Calculated Area: 917 sq. ft
Included: No

Heated: Yes
Finished: No
Enclosed: Yes
Contiguous: Yes
Permitted: Yes
Wet space: No
Addition: No
Conversion: No

2023 Berkley Avenue Southwest, Raleigh Court, Roanoke,
Roanoke city, Virginia, United States, 24015

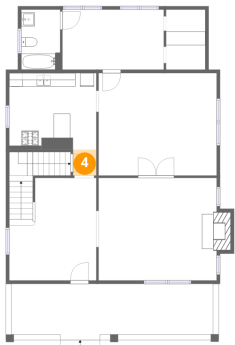
3 Floor 2 - Foyer



Max Dimensions: 12'8" x 15'0"
Calculated Area: 221 sq. ft
Included: Yes

Heated: Yes
Finished: Yes
Enclosed: Yes
Contiguous: Yes
Permitted: Yes
Wet space: No
Addition: No
Conversion: No

4 Floor 2 - Hall



Max Dimensions: 3'5" x 3'9"
Calculated Area: 13 sq. ft
Included: Yes

Heated: Yes
Finished: Yes
Enclosed: Yes
Contiguous: Yes
Permitted: Yes
Wet space: No
Addition: No
Conversion: No

5 Floor 2 - Porch

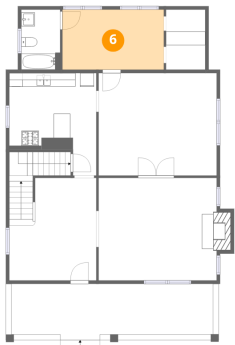


Max Dimensions: 29'6" x 8'2"
Calculated Area: 222 sq. ft
Included: No

Heated: No
Finished: No
Enclosed: No
Contiguous: Yes
Permitted: Yes
Wet space: No
Addition: No
Conversion: No

2023 Berkley Avenue Southwest, Raleigh Court, Roanoke,
Roanoke city, Virginia, United States, 24015

6 Floor 2 - Family Room



Max Dimensions: 14'10" x 8'9"
Calculated Area: 130 sq. ft
Included: Yes

Heated: Yes
Finished: Yes
Enclosed: Yes
Contiguous: Yes
Permitted: Yes
Wet space: No
Addition: No
Conversion: No

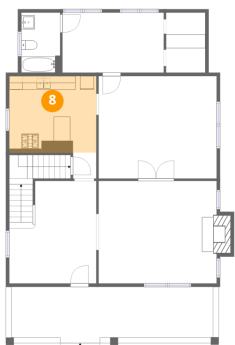
7 Floor 2 - Dining Room



Max Dimensions: 17'3" x 15'0"
Calculated Area: 258 sq. ft
Included: Yes

Heated: Yes
Finished: Yes
Enclosed: Yes
Contiguous: Yes
Permitted: Yes
Wet space: No
Addition: No
Conversion: No

8 Floor 2 - Kitchen



Max Dimensions: 12'9" x 11'2"
Calculated Area: 142 sq. ft
Included: Yes

Heated: Yes
Finished: Yes
Enclosed: Yes
Contiguous: Yes
Permitted: Yes
Wet space: No
Addition: No
Conversion: No

2023 Berkley Avenue Southwest, Raleigh Court, Roanoke,
Roanoke city, Virginia, United States, 24015

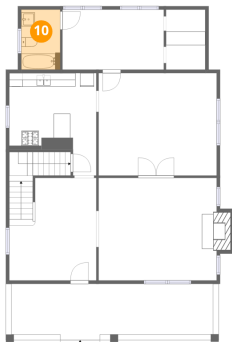
9 Floor 2 - Living Room



Max Dimensions: 17'3" x 15'0"
Calculated Area: 270 sq. ft
Included: Yes

Heated: Yes
Finished: Yes
Enclosed: Yes
Contiguous: Yes
Permitted: Yes
Wet space: No
Addition: No
Conversion: No

10 Floor 2 - Bath



Max Dimensions: 5'8" x 8'9"
Calculated Area: 50 sq. ft
Included: Yes

Heated: Yes
Finished: Yes
Enclosed: Yes
Contiguous: Yes
Permitted: Yes
Wet space: Yes
Addition: No
Conversion: No

11 Floor 2 - W.I.C.

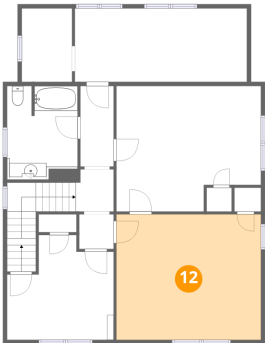


Max Dimensions: 5'9" x 8'9"
Calculated Area: 50 sq. ft
Included: Yes

Heated: Yes
Finished: Yes
Enclosed: Yes
Contiguous: Yes
Permitted: Yes
Wet space: No
Addition: No
Conversion: No

2023 Berkley Avenue Southwest, Raleigh Court, Roanoke,
Roanoke city, Virginia, United States, 24015

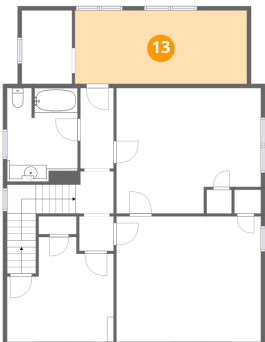
12 Floor 3 - Primary Bedroom



Max Dimensions: 17'3" x 15'0"
Calculated Area: 258 sq. ft
Included: Yes

Heated: Yes
Finished: Yes
Enclosed: Yes
Contiguous: Yes
Permitted: Yes
Wet space: No
Addition: No
Conversion: No

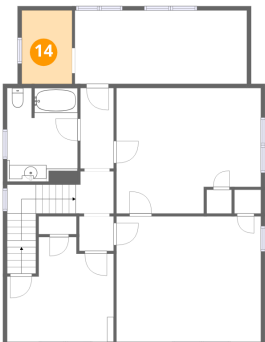
13 Floor 3 - Bedroom



Max Dimensions: 20'7" x 8'9"
Calculated Area: 180 sq. ft
Included: Yes

Heated: Yes
Finished: Yes
Enclosed: Yes
Contiguous: Yes
Permitted: Yes
Wet space: No
Addition: No
Conversion: No

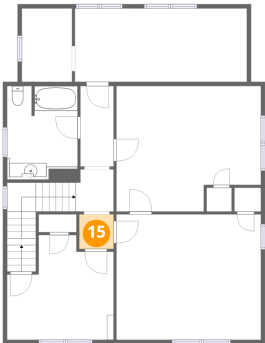
14 Floor 3 - W.I.C.



Max Dimensions: 6'0" x 8'9"
Calculated Area: 53 sq. ft
Included: No

Heated: Yes
Finished: No
Enclosed: Yes
Contiguous: Yes
Permitted: Yes
Wet space: No
Addition: No
Conversion: No

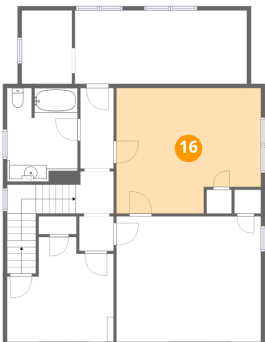
15 Floor 3 - Hall



Max Dimensions: 4'1" x 4'2"
Calculated Area: 17 sq. ft
Included: Yes

Heated: Yes
Finished: Yes
Enclosed: Yes
Contiguous: Yes
Permitted: Yes
Wet space: No
Addition: No
Conversion: No

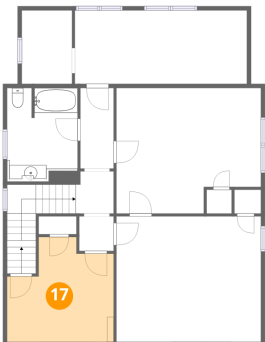
16 Floor 3 - Bedroom



Max Dimensions: 17'3" x 15'0"
Calculated Area: 237 sq. ft
Included: Yes

Heated: Yes
Finished: Yes
Enclosed: Yes
Contiguous: Yes
Permitted: Yes
Wet space: No
Addition: No
Conversion: No

17 Floor 3 - Bedroom

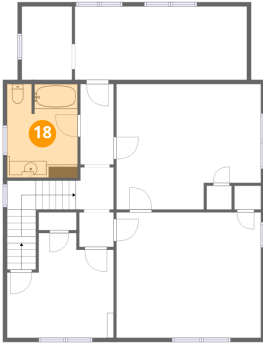


Max Dimensions: 12'9" x 12'6"
Calculated Area: 132 sq. ft
Included: Yes

Heated: Yes
Finished: Yes
Enclosed: Yes
Contiguous: Yes
Permitted: Yes
Wet space: No
Addition: No
Conversion: No

2023 Berkley Avenue Southwest, Raleigh Court, Roanoke,
Roanoke city, Virginia, United States, 24015

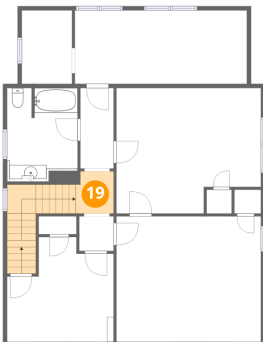
18 Floor 3 - Bath



Max Dimensions: 8'5" x 11'2"
Calculated Area: 93 sq. ft
Included: Yes

Heated: Yes
Finished: Yes
Enclosed: Yes
Contiguous: Yes
Permitted: Yes
Wet space: Yes
Addition: No
Conversion: No

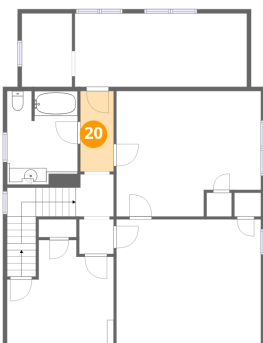
19 Floor 3 - Hall



Max Dimensions: 4'6" x 5'0"
Calculated Area: 75 sq. ft
Included: Yes

Heated: Yes
Finished: Yes
Enclosed: Yes
Contiguous: Yes
Permitted: Yes
Wet space: No
Addition: No
Conversion: No

20 Floor 3 - Hall

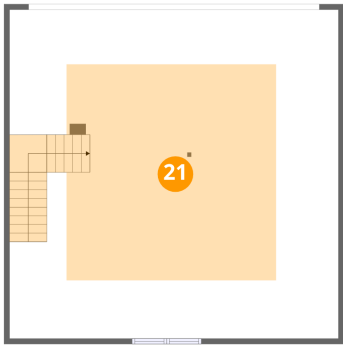


Max Dimensions: 4'0" x 9'7"
Calculated Area: 38 sq. ft
Included: Yes

Heated: Yes
Finished: Yes
Enclosed: Yes
Contiguous: Yes
Permitted: Yes
Wet space: No
Addition: No
Conversion: No

2023 Berkley Avenue Southwest, Raleigh Court, Roanoke,
Roanoke city, Virginia, United States, 24015

21 Floor 4 - Attic



Max Dimensions: 30'4" x 30'3"
Calculated Area: 424 sq. ft
Included: No

Heated: No
Finished: No
Enclosed: Yes
Contiguous: Yes
Permitted: Yes
Wet space: No
Addition: No
Conversion: No