

## Home data report

**4018 Overlook Trail Drive, Parkway Acres, Cave Spring,  
Roanoke, Roanoke County, Virginia, United States, 24018**



**Total Area: 2579 sq. ft**

Basement: 974 sq. ft, 1st Floor: 1605 sq. ft


Excluded: Utility 598 sq. ft, Garage 369 sq. ft, Screened porch 159 sq. ft, Porch 50 sq. ft,  
Walls: 232 sq. ft

## Property summary



Home data report

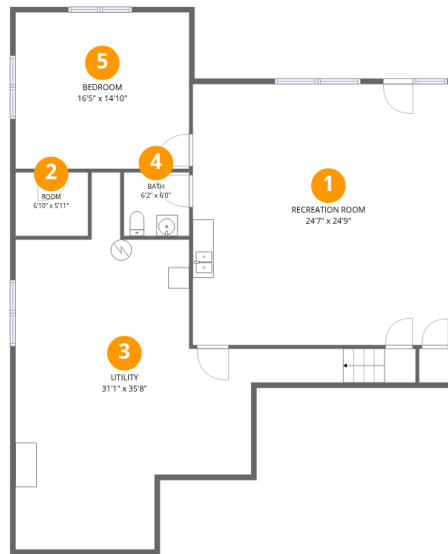
**4018 Overlook Trail Drive, Parkway Acres, Cave Spring,  
Roanoke, Roanoke County, Virginia, United States, 24018**

 **1**  
Half baths

 **1**  
Garages

## Home data report

**4018 Overlook Trail Drive, Parkway Acres, Cave Spring,  
Roanoke, Roanoke County, Virginia, United States, 24018**



## Room dimensions

Floor 1 Below grade

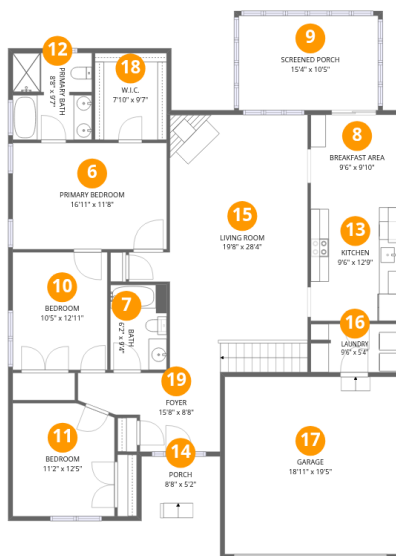
Total:974sqft

Excluded: 598sqft

#		Dimensions	sqft	Counted as living area
1	Recreation Room	24'7" x 24'9"	609 sq. ft	Yes
2	Room	6'10" x 5'11"	41 sq. ft	Yes
3	Utility	31'1" x 35'8"	598 sq. ft	No
4	Bath	6'2" x 6'0"	37 sq. ft	Yes
5	Bedroom	16'5" x 14'10"	244 sq. ft	Yes

Home data report

**4018 Overlook Trail Drive, Parkway Acres, Cave Spring, Roanoke, Roanoke County, Virginia, United States, 24018**



**Room dimensions**

Floor 2

Total:1605sqft Excluded: 578sqft

#		Dimensions	sqft	Counted as living area
6	Primary Bedroom	16'11" x 11'8"	198 sq. ft	Yes
7	Bath	6'2" x 9'4"	58 sq. ft	Yes
8	Breakfast Area	9'6" x 9'10"	94 sq. ft	Yes
9	Screened Porch	15'4" x 10'5"	159 sq. ft	No
10	Bedroom	10'5" x 12'11"	134 sq. ft	Yes
11	Bedroom	11'2" x 12'5"	136 sq. ft	Yes
12	Primary Bath	8'8" x 9'7"	81 sq. ft	Yes
13	Kitchen	9'6" x 12'9"	121 sq. ft	Yes
14	Porch	8'8" x 5'2"	50 sq. ft	No
15	Living Room	19'8" x 28'4"	443 sq. ft	Yes
16	Laundry	9'6" x 5'4"	50 sq. ft	Yes

Home data report

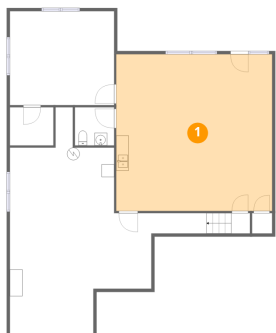
**4018 Overlook Trail Drive, Parkway Acres, Cave Spring,  
Roanoke, Roanoke County, Virginia, United States, 24018**

#		Dimensions	sqft	Counted as living area
17	Garage	18'11" x 19'5"	369 sq. ft	No
18	W.I.C.	7'10" x 9'7"	75 sq. ft	Yes
19	Foyer	15'8" x 8'8"	104 sq. ft	Yes

# 4018 Overlook Trail Drive, Parkway Acres, Cave Spring, Roanoke, Roanoke County, Virginia, United States, 24018

## 1 Floor 1 - Recreation Room

---



Dimensions: 24'7" x 24'9"  
Area: 609 sq. ft  
Counted as living area: Yes

Heated: Yes  
Finished: Yes  
Enclosed: Yes  
Contiguous: Yes  
Permitted: Yes  
Wet space: No  
Addition: No  
Conversion: No

## 2 Floor 1 - Room

---



Dimensions: 6'10" x 5'11"  
Area: 41 sq. ft  
Counted as living area: Yes

Heated: Yes  
Finished: Yes  
Enclosed: Yes  
Contiguous: Yes  
Permitted: Yes  
Wet space: No  
Addition: No  
Conversion: No

4018 Overlook Trail Drive, Parkway Acres, Cave Spring,  
Roanoke, Roanoke County, Virginia, United States, 24018

**3** Floor 1 - Utility



Dimensions: 31'1" x 35'8"  
Area: 598 sq. ft  
Counted as living area: No

Heated: Yes  
Finished: No  
Enclosed: Yes  
Contiguous: Yes  
Permitted: Yes  
Wet space: No  
Addition: No  
Conversion: No

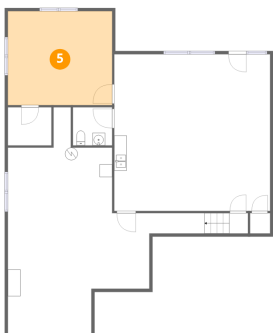
**4** Floor 1 - Bath



Dimensions: 6'2" x 6'0"  
Area: 37 sq. ft  
Counted as living area: Yes

Heated: Yes  
Finished: Yes  
Enclosed: Yes  
Contiguous: Yes  
Permitted: Yes  
Wet space: Yes  
Addition: No  
Conversion: No

**5** Floor 1 - Bedroom



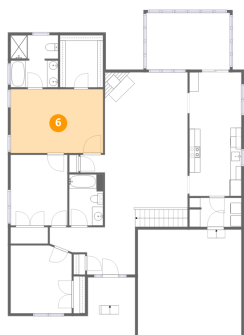
Dimensions: 16'5" x 14'10"  
Area: 244 sq. ft  
Counted as living area: Yes

Heated: Yes  
Finished: Yes  
Enclosed: Yes  
Contiguous: Yes  
Permitted: Yes  
Wet space: No  
Addition: No  
Conversion: No

4018 Overlook Trail Drive, Parkway Acres, Cave Spring,  
Roanoke, Roanoke County, Virginia, United States, 24018

**6** Floor 2 - Primary Bedroom

---

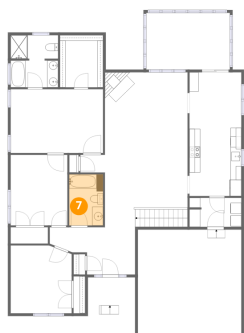


Dimensions: 16'11" x 11'8"  
Area: 198 sq. ft  
Counted as living area: Yes

Heated: Yes  
Finished: Yes  
Enclosed: Yes  
Contiguous: Yes  
Permitted: Yes  
Wet space: No  
Addition: No  
Conversion: No

**7** Floor 2 - Bath

---

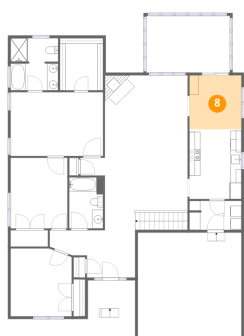


Dimensions: 6'2" x 9'4"  
Area: 58 sq. ft  
Counted as living area: Yes

Heated: Yes  
Finished: Yes  
Enclosed: Yes  
Contiguous: Yes  
Permitted: Yes  
Wet space: Yes  
Addition: No  
Conversion: No

**8** Floor 2 - Breakfast Area

---

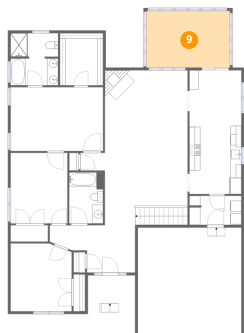


Dimensions: 9'6" x 9'10"  
Area: 94 sq. ft  
Counted as living area: Yes

Heated: Yes  
Finished: Yes  
Enclosed: Yes  
Contiguous: Yes  
Permitted: Yes  
Wet space: No  
Addition: No  
Conversion: No

# 4018 Overlook Trail Drive, Parkway Acres, Cave Spring, Roanoke, Roanoke County, Virginia, United States, 24018

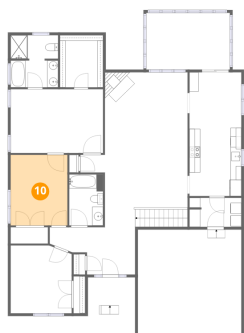
## 9 Floor 2 - Screened Porch



Dimensions: 15'4" x 10'5"  
Area: 159 sq. ft  
Counted as living area: No

Heated: No  
Finished: No  
Enclosed: No  
Contiguous: Yes  
Permitted: Yes  
Wet space: No  
Addition: No  
Conversion: No

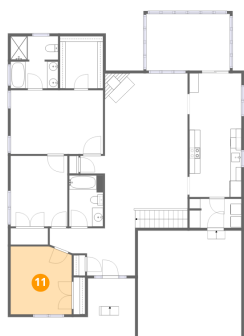
## 10 Floor 2 - Bedroom



Dimensions: 10'5" x 12'11"  
Area: 134 sq. ft  
Counted as living area: Yes

Heated: Yes  
Finished: Yes  
Enclosed: Yes  
Contiguous: Yes  
Permitted: Yes  
Wet space: No  
Addition: No  
Conversion: No

## 11 Floor 2 - Bedroom



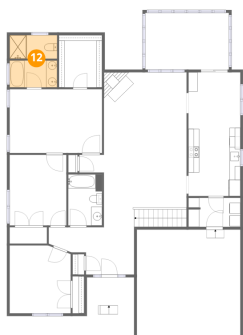
Dimensions: 11'2" x 12'5"  
Area: 136 sq. ft  
Counted as living area: Yes

Heated: Yes  
Finished: Yes  
Enclosed: Yes  
Contiguous: Yes  
Permitted: Yes  
Wet space: No  
Addition: No  
Conversion: No

4018 Overlook Trail Drive, Parkway Acres, Cave Spring,  
Roanoke, Roanoke County, Virginia, United States, 24018

**12** Floor 2 - Primary Bath

---

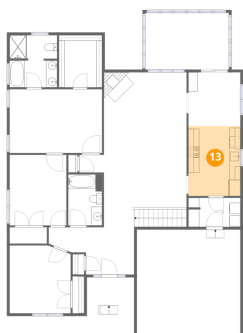


Dimensions: 8'8" x 9'7"  
Area: 81 sq. ft  
Counted as living area: Yes

Heated: Yes  
Finished: Yes  
Enclosed: Yes  
Contiguous: Yes  
Permitted: Yes  
Wet space: Yes  
Addition: No  
Conversion: No

**13** Floor 2 - Kitchen

---



Dimensions: 9'6" x 12'9"  
Area: 121 sq. ft  
Counted as living area: Yes

Heated: Yes  
Finished: Yes  
Enclosed: Yes  
Contiguous: Yes  
Permitted: Yes  
Wet space: No  
Addition: No  
Conversion: No

**14** Floor 2 - Porch

---

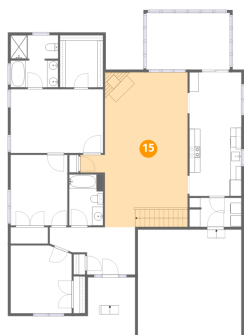


Dimensions: 8'8" x 5'2"  
Area: 50 sq. ft  
Counted as living area: No

Heated: No  
Finished: No  
Enclosed: No  
Contiguous: Yes  
Permitted: Yes  
Wet space: No  
Addition: No  
Conversion: No

4018 Overlook Trail Drive, Parkway Acres, Cave Spring,  
Roanoke, Roanoke County, Virginia, United States, 24018

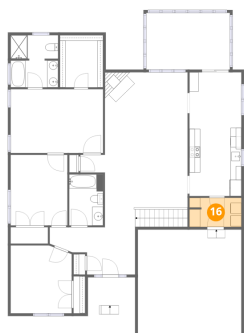
**15** Floor 2 - Living Room



Dimensions: 19'8" x 28'4"  
Area: 443 sq. ft  
Counted as living area: Yes

Heated: Yes  
Finished: Yes  
Enclosed: Yes  
Contiguous: Yes  
Permitted: Yes  
Wet space: No  
Addition: No  
Conversion: No

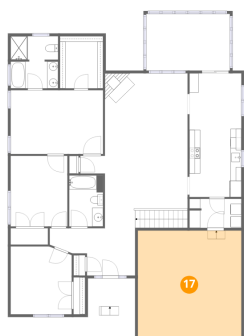
**16** Floor 2 - Laundry



Dimensions: 9'6" x 5'4"  
Area: 50 sq. ft  
Counted as living area: Yes

Heated: Yes  
Finished: Yes  
Enclosed: Yes  
Contiguous: Yes  
Permitted: Yes  
Wet space: No  
Addition: No  
Conversion: No

**17** Floor 2 - Garage



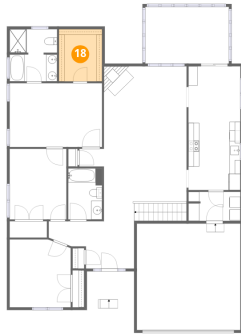
Dimensions: 18'11" x 19'5"  
Area: 369 sq. ft  
Counted as living area: No

Heated: No  
Finished: No  
Enclosed: Yes  
Contiguous: Yes  
Permitted: Yes  
Wet space: No  
Addition: No  
Conversion: No

4018 Overlook Trail Drive, Parkway Acres, Cave Spring,  
Roanoke, Roanoke County, Virginia, United States, 24018

**18** Floor 2 - W.I.C.

---

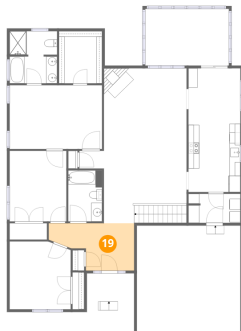


Dimensions: 7'10" x 9'7"  
Area: 75 sq. ft  
Counted as living area: Yes

Heated: Yes  
Finished: Yes  
Enclosed: Yes  
Contiguous: Yes  
Permitted: Yes  
Wet space: No  
Addition: No  
Conversion: No

**19** Floor 2 - Foyer

---



Dimensions: 15'8" x 8'8"  
Area: 104 sq. ft  
Counted as living area: Yes

Heated: Yes  
Finished: Yes  
Enclosed: Yes  
Contiguous: Yes  
Permitted: Yes  
Wet space: No  
Addition: No  
Conversion: No