

Home data report

1912 Bluemont Avenue Southwest, Roanoke, Virginia 24015, United States



Total Area: 1912 sq. ft

Basement: 0 sq. ft, 1st Floor: 972 sq. ft, 2nd Floor: 940 sq. ft, 3rd Floor: 0 sq. ft

Excluded: Laundry 369 sq. ft, Basement 387 sq. ft, Room 42 sq. ft, Garage 302 sq. ft, Deck 384 sq. ft, Porch 236 sq. ft, Undefined 24 sq. ft, Attic 514 sq. ft, Walls: 271 sq. ft

Property summary



4 Floors



2 Bedrooms



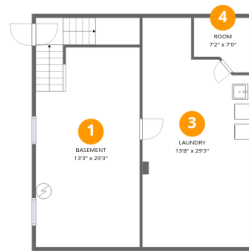
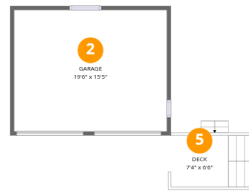
2 Bathrooms



1 Garages

Home data report

1912 Bluemont Avenue Southwest, Roanoke, Virginia 24015, United States



Room dimensions

Floor 1 Below grade

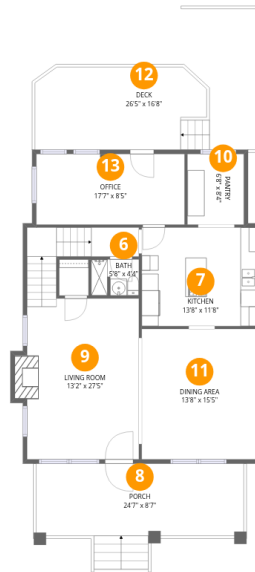
Total:0sqft

Excluded: 1169sqft

#		Dimensions	sqft	Counted as living area
1	Basement	13'3" x 29'3"	383 sq. ft	No
2	Garage	19'6" x 15'5"	302 sq. ft	No
3	Laundry	13'8" x 29'3"	355 sq. ft	No
4	Room	7'2" x 7'0"	42 sq. ft	No
5	Deck	7'4" x 6'6"	69 sq. ft	No

Home data report

1912 Bluemont Avenue Southwest, Roanoke, Virginia 24015, United States



Room dimensions

Floor 2

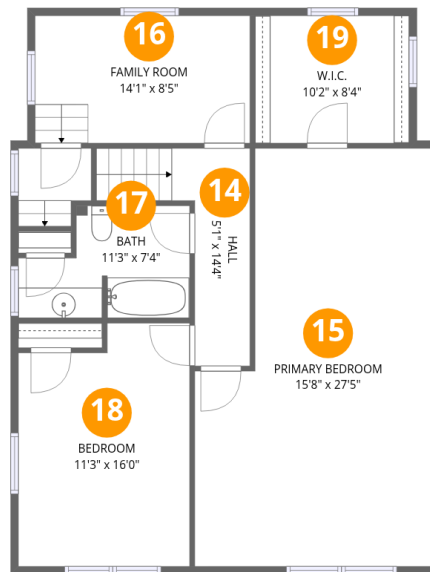
Total:972sqft

Excluded: 551sqft

#		Dimensions	sqft	Counted as living area
6	Bath	5'8" x 4'4"	23 sq. ft	Yes
7	Kitchen	13'8" x 11'8"	160 sq. ft	Yes
8	Porch	24'7" x 8'7"	236 sq. ft	No
9	Living Room	13'2" x 27'5"	323 sq. ft	Yes
10	Pantry	6'8" x 8'4"	56 sq. ft	Yes
11	Dining Area	13'8" x 15'5"	212 sq. ft	Yes
12	Deck	26'5" x 16'8"	315 sq. ft	No
13	Office	17'7" x 8'5"	147 sq. ft	Yes

Home data report

1912 Bluemont Avenue Southwest, Roanoke, Virginia 24015, United States



Room dimensions

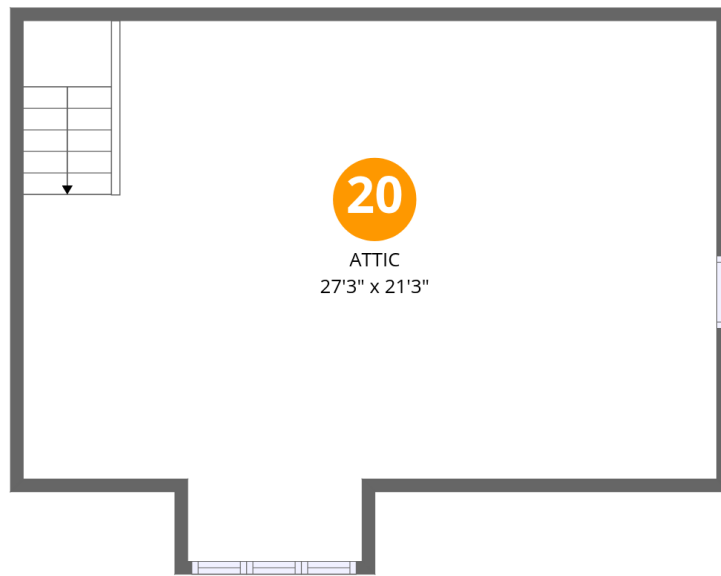
Floor 3

Total:940sqft Excluded: 24sqft

#		Dimensions	sqft	Counted as living area
14	Hall	5'1" x 14'4"	74 sq. ft	Yes
15	Primary Bedroom	15'8" x 27'5"	373 sq. ft	Yes
16	Family Room	14'1" x 8'5"	118 sq. ft	Yes
17	Bath	11'3" x 7'4"	69 sq. ft	Yes
18	Bedroom	11'3" x 16'0"	168 sq. ft	Yes
19	W.I.C.	10'2" x 8'4"	85 sq. ft	Yes

Home data report

1912 Bluemont Avenue Southwest, Roanoke, Virginia 24015,
United States



Room dimensions

Floor 4

Total:0sqft

Excluded: 514sqft

#		Dimensions	sqft	Counted as living area
20	Attic	27'3" x 21'3"	514 sq. ft	No

1912 Bluemont Avenue Southwest, Roanoke, Virginia 24015,
United States

1 Floor 1 - Basement



Dimensions: 13'3" x 29'3"
Area: 383 sq. ft
Counted as living area: No

Heated: Yes
Finished: No
Enclosed: Yes
Contiguous: Yes
Permitted: Yes
Wet space: No
Addition: No
Conversion: No

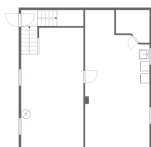


2 Floor 1 - Garage



Dimensions: 19'6" x 15'5"
Area: 302 sq. ft
Counted as living area: No

Heated: No
Finished: No
Enclosed: Yes
Contiguous: Yes
Permitted: Yes
Wet space: No
Addition: No
Conversion: No



3 Floor 1 - Laundry



Dimensions: 13'8" x 29'3"
Area: 355 sq. ft
Counted as living area: No

Heated: Yes
Finished: No
Enclosed: Yes
Contiguous: Yes
Permitted: Yes
Wet space: No
Addition: No
Conversion: No



4 Floor 1 - Room



Dimensions: 7'2" x 7'0"
Area: 42 sq. ft
Counted as living area: No

Heated: Yes
Finished: No
Enclosed: Yes
Contiguous: Yes
Permitted: Yes
Wet space: No
Addition: No
Conversion: No

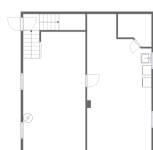


5 Floor 1 - Deck



Dimensions: 7'4" x 6'6"
Area: 69 sq. ft
Counted as living area: No

Heated: No
Finished: No
Enclosed: No
Contiguous: Yes
Permitted: Yes
Wet space: No
Addition: No
Conversion: No



6 Floor 2 - Bath



Dimensions: 5'8" x 4'4"
Area: 23 sq. ft
Counted as living area: Yes

Heated: Yes
Finished: Yes
Enclosed: Yes
Contiguous: Yes
Permitted: Yes
Wet space: Yes
Addition: No
Conversion: No

7 Floor 2 - Kitchen



Dimensions: 13'8" x 11'8"
Area: 160 sq. ft
Counted as living area: Yes

Heated: Yes
Finished: Yes
Enclosed: Yes
Contiguous: Yes
Permitted: Yes
Wet space: No
Addition: No
Conversion: No

8 Floor 2 - Porch



Dimensions: 24'7" x 8'7"
Area: 236 sq. ft
Counted as living area: No

Heated: No
Finished: No
Enclosed: No
Contiguous: Yes
Permitted: Yes
Wet space: No
Addition: No
Conversion: No

9 Floor 2 - Living Room



Dimensions: 13'2" x 27'5"
Area: 323 sq. ft
Counted as living area: Yes

Heated: Yes
Finished: Yes
Enclosed: Yes
Contiguous: Yes
Permitted: Yes
Wet space: No
Addition: No
Conversion: No

10 Floor 2 - Pantry



Dimensions: 6'8" x 8'4"
Area: 56 sq. ft
Counted as living area: Yes

Heated: Yes
Finished: Yes
Enclosed: Yes
Contiguous: Yes
Permitted: Yes
Wet space: No
Addition: No
Conversion: No

11 Floor 2 - Dining Area



Dimensions: 13'8" x 15'5"
Area: 212 sq. ft
Counted as living area: Yes

Heated: Yes
Finished: Yes
Enclosed: Yes
Contiguous: Yes
Permitted: Yes
Wet space: No
Addition: No
Conversion: No

1912 Bluemont Avenue Southwest, Roanoke, Virginia 24015, United States

12 Floor 2 - Deck



Dimensions: 26'5" x 16'8"
Area: 315 sq. ft
Counted as living area: No

Heated: No
Finished: No
Enclosed: No
Contiguous: Yes
Permitted: Yes
Wet space: No
Addition: No
Conversion: No

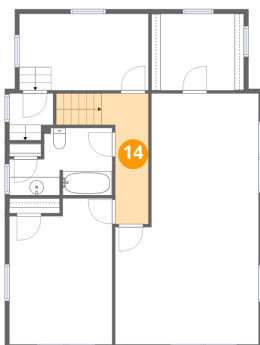
13 Floor 2 - Office



Dimensions: 17'7" x 8'5"
Area: 147 sq. ft
Counted as living area: Yes

Heated: Yes
Finished: Yes
Enclosed: Yes
Contiguous: Yes
Permitted: Yes
Wet space: No
Addition: No
Conversion: No

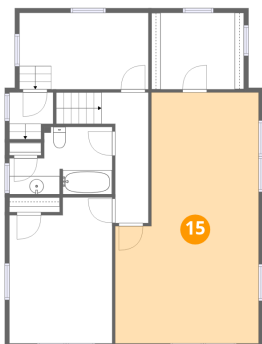
14 Floor 3 - Hall



Dimensions: 5'1" x 14'4"
Area: 74 sq. ft
Counted as living area: Yes

Heated: Yes
Finished: Yes
Enclosed: Yes
Contiguous: Yes
Permitted: Yes
Wet space: No
Addition: No
Conversion: No

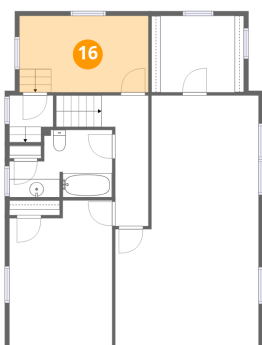
15 Floor 3 - Primary Bedroom



Dimensions: 15'8" x 27'5"
Area: 373 sq. ft
Counted as living area: Yes

Heated: Yes
Finished: Yes
Enclosed: Yes
Contiguous: Yes
Permitted: Yes
Wet space: No
Addition: No
Conversion: No

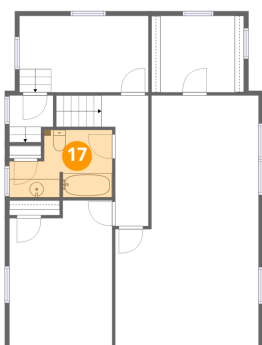
16 Floor 3 - Family Room



Dimensions: 14'1" x 8'5"
Area: 118 sq. ft
Counted as living area: Yes

Heated: Yes
Finished: Yes
Enclosed: Yes
Contiguous: Yes
Permitted: Yes
Wet space: No
Addition: No
Conversion: No

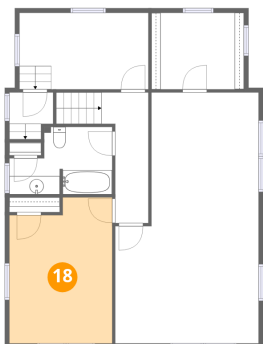
17 Floor 3 - Bath



Dimensions: 11'3" x 7'4"
Area: 69 sq. ft
Counted as living area: Yes

Heated: Yes
Finished: Yes
Enclosed: Yes
Contiguous: Yes
Permitted: Yes
Wet space: Yes
Addition: No
Conversion: No

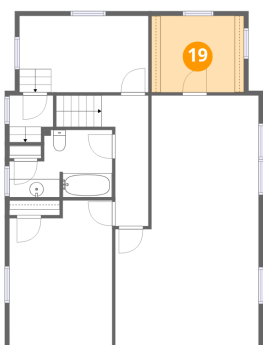
18 Floor 3 - Bedroom



Dimensions: 11'3" x 16'0"
Area: 168 sq. ft
Counted as living area: Yes

Heated: Yes
Finished: Yes
Enclosed: Yes
Contiguous: Yes
Permitted: Yes
Wet space: No
Addition: No
Conversion: No

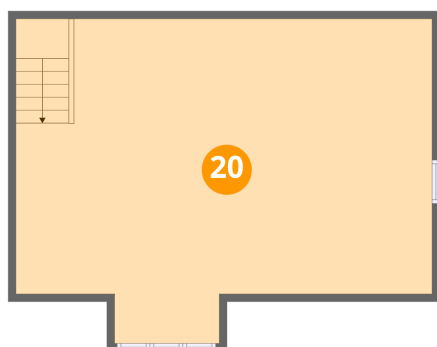
19 Floor 3 - W.I.C.



Dimensions: 10'2" x 8'4"
Area: 85 sq. ft
Counted as living area: Yes

Heated: Yes
Finished: Yes
Enclosed: Yes
Contiguous: Yes
Permitted: Yes
Wet space: No
Addition: No
Conversion: No

20 Floor 4 - Attic



Dimensions: 27'3" x 21'3"
Area: 514 sq. ft
Counted as living area: No

Heated: No
Finished: No
Enclosed: Yes
Contiguous: Yes
Permitted: Yes
Wet space: No
Addition: No
Conversion: No