

Home report

4021 Tredon Road, Mechanicsville, Hanover County, Virginia,  
United States, 23111



Total Area: 3414 sq. ft

Below Ground: 28 sq. ft, Floor 2: 1650 sq. ft, Floor 3: 1736 sq. ft

Excluded: Basement 889 sq. ft, Room 219 sq. ft, Storage 55 sq. ft, Garage 441 sq. ft, Porch 201 sq. ft, Low ceiling 22 sq. ft, Walls: 296 sq. ft

Property summary

 **3** Floors

 **4** Bedrooms

 **3** Bathrooms

Home report

**4021 Tredon Road, Mechanicsville, Hanover County, Virginia,  
United States, 23111**



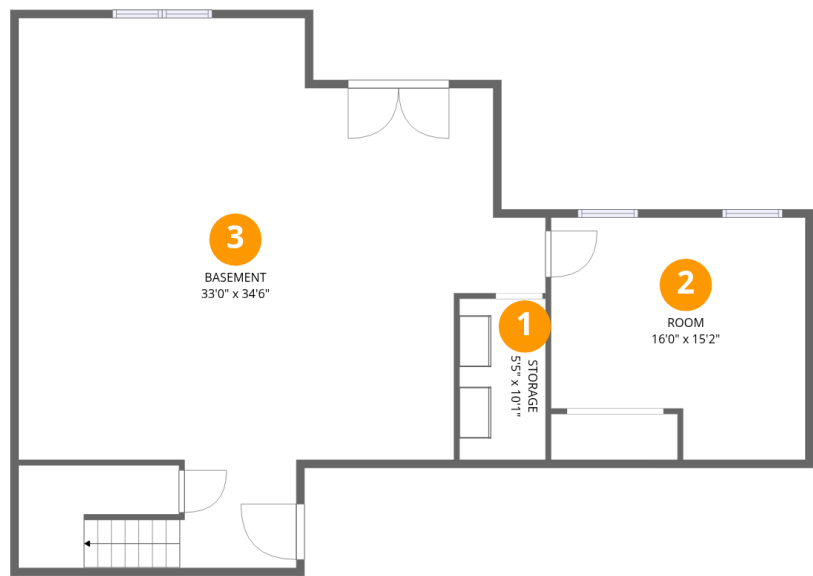
**1**  
Half baths



**1**  
Garages

Home report

4021 Tredon Road, Mechanicsville, Hanover County, Virginia,  
United States, 23111



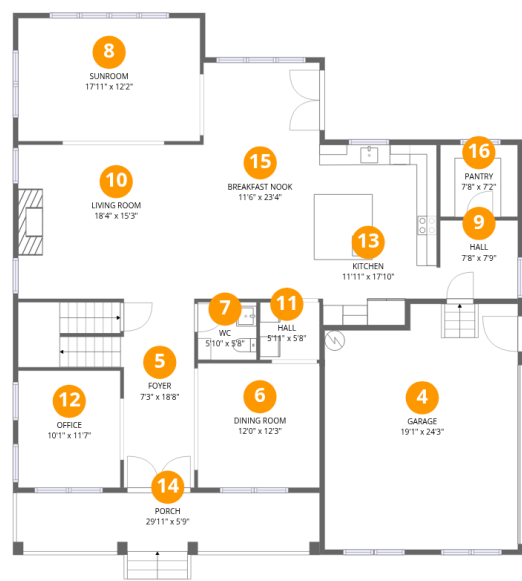
Room dimensions

Floor 1 Below ground Total:28sqft Excluded: 1163sqft

#		Max Dimensions	sqft	Included
1	Storage	5'5" x 10'1"	55 sq. ft	No
2	Room	16'0" x 15'2"	216 sq. ft	No
3	Basement	33'0" x 34'6"	875 sq. ft	No

Home report

4021 Tredon Road, Mechanicsville, Hanover County, Virginia,  
United States, 23111



Room dimensions

Floor 2 Total:1650sqft    Excluded: 642sqft

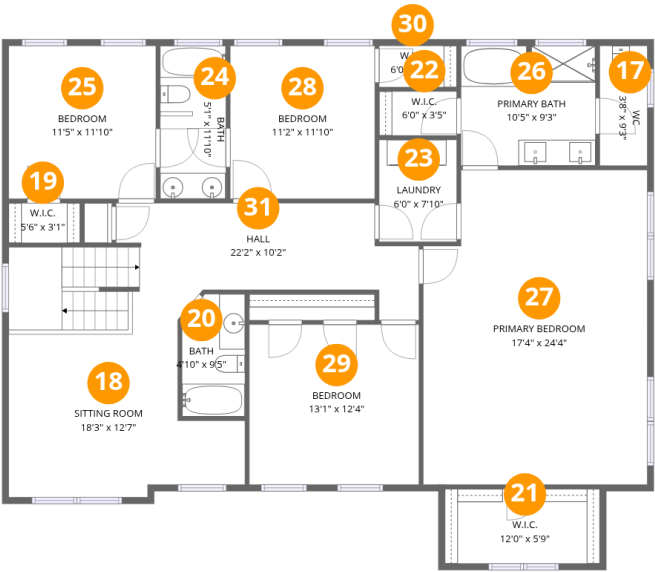
#		Max Dimensions	sqft	Included
4	Garage	19'1" x 24'3"	441 sq. ft	No
5	Foyer	7'3" x 18'8"	194 sq. ft	Yes
6	Dining Room	12'0" x 12'3"	148 sq. ft	Yes
7	WC	5'10" x 5'8"	33 sq. ft	Yes
8	Sunroom	17'11" x 12'2"	219 sq. ft	Yes
9	Hall	7'8" x 7'9"	59 sq. ft	Yes
10	Living Room	18'4" x 15'3"	279 sq. ft	Yes
11	Hall	5'11" x 5'8"	34 sq. ft	Yes
12	Office	10'1" x 11'7"	117 sq. ft	Yes
13	Kitchen	11'11" x 17'10"	199 sq. ft	Yes
14	Porch	29'11" x 5'9"	201 sq. ft	No

Home report

4021 Tredon Road, Mechanicsville, Hanover County, Virginia,  
United States, 23111

#		Max Dimensions	sqft	Included
15	Breakfast Nook	11'6" x 23'4"	268 sq. ft	Yes
16	Pantry	7'8" x 7'2"	55 sq. ft	Yes

4021 Tredon Road, Mechanicsville, Hanover County, Virginia,  
United States, 23111



Room dimensions

Floor 3 Total:1736sqft    Excluded: 22sqft

#		Max Dimensions	sqft	Included
17	WC	3'8" x 9'3"	34 sq. ft	Yes
18	Sitting Room	18'3" x 12'7"	188 sq. ft	Yes
19	W.I.C.	5'6" x 3'1"	17 sq. ft	Yes
20	Bath	4'10" x 9'5"	44 sq. ft	Yes
21	W.I.C.	12'0" x 5'9"	47 sq. ft	Yes
22	W.I.C.	6'0" x 3'5"	20 sq. ft	Yes
23	Laundry	6'0" x 7'10"	47 sq. ft	Yes
24	Bath	5'1" x 11'10"	60 sq. ft	Yes
25	Bedroom	11'5" x 11'10"	135 sq. ft	Yes
26	Primary Bath	10'5" x 9'3"	95 sq. ft	Yes
27	Primary Bedroom	17'4" x 24'4"	404 sq. ft	Yes

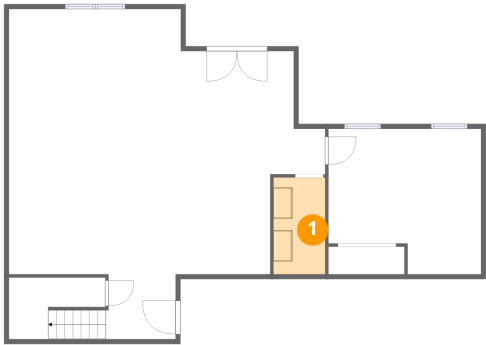
## Home report

**4021 Tredon Road, Mechanicsville, Hanover County, Virginia,  
United States, 23111**

#		Max Dimensions	sqft	Included
28	Bedroom	11'2" x 11'10"	132 sq. ft	Yes
29	Bedroom	13'1" x 12'4"	162 sq. ft	Yes
30	W.I.C.	6'0" x 3'2"	19 sq. ft	Yes
31	Hall	22'2" x 10'2"	227 sq. ft	Yes

4021 Tredon Road, Mechanicsville, Hanover County, Virginia,  
United States, 23111

1 Floor 1 - Storage



Max Dimensions: 5'5" x 10'1"  
Calculated Area: 55 sq. ft  
Included: No

Heated: No  
Finished: No  
Enclosed: No  
Contiguous: Yes  
Permitted: Yes  
Wet space: No  
Addition: No  
Conversion: No

2 Floor 1 - Room

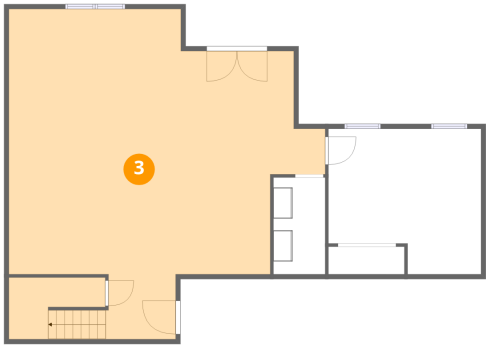


Max Dimensions: 16'0" x 15'2"  
Calculated Area: 216 sq. ft  
Included: No

Heated: Yes  
Finished: No  
Enclosed: Yes  
Contiguous: Yes  
Permitted: Yes  
Wet space: No  
Addition: No  
Conversion: No

4021 Tredon Road, Mechanicsville, Hanover County, Virginia,  
United States, 23111

3 Floor 1 - Basement



Max Dimensions: 33'0" x 34'6"  
Calculated Area: 875 sq. ft  
Included: No

Heated: Yes  
Finished: No  
Enclosed: Yes  
Contiguous: Yes  
Permitted: Yes  
Wet space: No  
Addition: No  
Conversion: No

4 Floor 2 - Garage



Max Dimensions: 19'1" x 24'3"  
Calculated Area: 441 sq. ft  
Included: No

Heated: No  
Finished: No  
Enclosed: Yes  
Contiguous: Yes  
Permitted: Yes  
Wet space: No  
Addition: No  
Conversion: No

5 Floor 2 - Foyer



Max Dimensions: 7'3" x 18'8"  
Calculated Area: 194 sq. ft  
Included: Yes

Heated: Yes  
Finished: Yes  
Enclosed: Yes  
Contiguous: Yes  
Permitted: Yes  
Wet space: No  
Addition: No  
Conversion: No

4021 Tredon Road, Mechanicsville, Hanover County, Virginia,  
United States, 23111

6 Floor 2 - Dining Room



Max Dimensions: 12'0" x 12'3"  
Calculated Area: 148 sq. ft  
Included: Yes

Heated: Yes  
Finished: Yes  
Enclosed: Yes  
Contiguous: Yes  
Permitted: Yes  
Wet space: No  
Addition: No  
Conversion: No

7 Floor 2 - WC



Max Dimensions: 5'10" x 5'8"  
Calculated Area: 33 sq. ft  
Included: Yes

Heated: Yes  
Finished: Yes  
Enclosed: Yes  
Contiguous: Yes  
Permitted: Yes  
Wet space: Yes  
Addition: No  
Conversion: No

8 Floor 2 - Sunroom



Max Dimensions: 17'11" x 12'2"  
Calculated Area: 219 sq. ft  
Included: Yes

Heated: Yes  
Finished: Yes  
Enclosed: Yes  
Contiguous: Yes  
Permitted: Yes  
Wet space: No  
Addition: No  
Conversion: No

4021 Tredon Road, Mechanicsville, Hanover County, Virginia,  
United States, 23111

9 Floor 2 - Hall



Max Dimensions: 7'8" x 7'9"  
Calculated Area: 59 sq. ft  
Included: Yes

Heated: Yes  
Finished: Yes  
Enclosed: Yes  
Contiguous: Yes  
Permitted: Yes  
Wet space: No  
Addition: No  
Conversion: No

10 Floor 2 - Living Room



Max Dimensions: 18'4" x 15'3"  
Calculated Area: 279 sq. ft  
Included: Yes

Heated: Yes  
Finished: Yes  
Enclosed: Yes  
Contiguous: Yes  
Permitted: Yes  
Wet space: No  
Addition: No  
Conversion: No

11 Floor 2 - Hall



Max Dimensions: 5'11" x 5'8"  
Calculated Area: 34 sq. ft  
Included: Yes

Heated: Yes  
Finished: Yes  
Enclosed: Yes  
Contiguous: Yes  
Permitted: Yes  
Wet space: No  
Addition: No  
Conversion: No

4021 Tredon Road, Mechanicsville, Hanover County, Virginia,  
United States, 23111

12 Floor 2 - Office



Max Dimensions: 10'1" x 11'7"  
Calculated Area: 117 sq. ft  
Included: Yes

Heated: Yes  
Finished: Yes  
Enclosed: Yes  
Contiguous: Yes  
Permitted: Yes  
Wet space: No  
Addition: No  
Conversion: No

13 Floor 2 - Kitchen



Max Dimensions: 11'11" x 17'10"  
Calculated Area: 199 sq. ft  
Included: Yes

Heated: Yes  
Finished: Yes  
Enclosed: Yes  
Contiguous: Yes  
Permitted: Yes  
Wet space: No  
Addition: No  
Conversion: No

14 Floor 2 - Porch



Max Dimensions: 29'11" x 5'9"  
Calculated Area: 201 sq. ft  
Included: No

Heated: No  
Finished: No  
Enclosed: No  
Contiguous: Yes  
Permitted: Yes  
Wet space: No  
Addition: No  
Conversion: No

4021 Tredon Road, Mechanicsville, Hanover County, Virginia,  
United States, 23111

## 15 Floor 2 - Breakfast Nook



Max Dimensions: 11'6" x 23'4"  
Calculated Area: 268 sq. ft  
Included: Yes

Heated: Yes  
Finished: Yes  
Enclosed: Yes  
Contiguous: Yes  
Permitted: Yes  
Wet space: No  
Addition: No  
Conversion: No

## 16 Floor 2 - Pantry



Max Dimensions: 7'8" x 7'2"  
Calculated Area: 55 sq. ft  
Included: Yes

Heated: Yes  
Finished: Yes  
Enclosed: Yes  
Contiguous: Yes  
Permitted: Yes  
Wet space: No  
Addition: No  
Conversion: No

## 17 Floor 3 - WC



Max Dimensions: 3'8" x 9'3"  
Calculated Area: 34 sq. ft  
Included: Yes

Heated: Yes  
Finished: Yes  
Enclosed: Yes  
Contiguous: Yes  
Permitted: Yes  
Wet space: Yes  
Addition: No  
Conversion: No

4021 Tredon Road, Mechanicsville, Hanover County, Virginia,  
United States, 23111

### 18 Floor 3 - Sitting Room



Max Dimensions: 18'3" x 12'7"  
Calculated Area: 188 sq. ft  
Included: Yes

Heated: Yes  
Finished: Yes  
Enclosed: Yes  
Contiguous: Yes  
Permitted: Yes  
Wet space: No  
Addition: No  
Conversion: No

### 19 Floor 3 - W.I.C.



Max Dimensions: 5'6" x 3'1"  
Calculated Area: 17 sq. ft  
Included: Yes

Heated: Yes  
Finished: Yes  
Enclosed: Yes  
Contiguous: Yes  
Permitted: Yes  
Wet space: No  
Addition: No  
Conversion: No

### 20 Floor 3 - Bath



Max Dimensions: 4'10" x 9'5"  
Calculated Area: 44 sq. ft  
Included: Yes

Heated: Yes  
Finished: Yes  
Enclosed: Yes  
Contiguous: Yes  
Permitted: Yes  
Wet space: Yes  
Addition: No  
Conversion: No

4021 Tredon Road, Mechanicsville, Hanover County, Virginia,  
United States, 23111

21 Floor 3 - W.I.C.



Max Dimensions: 12'0" x 5'9"  
Calculated Area: 47 sq. ft  
Included: Yes

Heated: Yes  
Finished: Yes  
Enclosed: Yes  
Contiguous: Yes  
Permitted: Yes  
Wet space: No  
Addition: No  
Conversion: No

22 Floor 3 - W.I.C.



Max Dimensions: 6'0" x 3'5"  
Calculated Area: 20 sq. ft  
Included: Yes

Heated: Yes  
Finished: Yes  
Enclosed: Yes  
Contiguous: Yes  
Permitted: Yes  
Wet space: No  
Addition: No  
Conversion: No

23 Floor 3 - Laundry

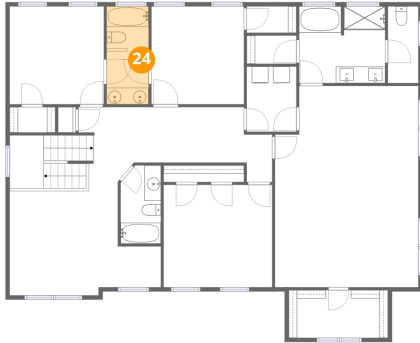


Max Dimensions: 6'0" x 7'10"  
Calculated Area: 47 sq. ft  
Included: Yes

Heated: Yes  
Finished: Yes  
Enclosed: Yes  
Contiguous: Yes  
Permitted: Yes  
Wet space: No  
Addition: No  
Conversion: No

4021 Tredon Road, Mechanicsville, Hanover County, Virginia,  
United States, 23111

### 24 Floor 3 - Bath



Max Dimensions: 5'1" x 11'10"  
Calculated Area: 60 sq. ft  
Included: Yes

Heated: Yes  
Finished: Yes  
Enclosed: Yes  
Contiguous: Yes  
Permitted: Yes  
Wet space: Yes  
Addition: No  
Conversion: No

### 25 Floor 3 - Bedroom



Max Dimensions: 11'5" x 11'10"  
Calculated Area: 135 sq. ft  
Included: Yes

Heated: Yes  
Finished: Yes  
Enclosed: Yes  
Contiguous: Yes  
Permitted: Yes  
Wet space: No  
Addition: No  
Conversion: No

### 26 Floor 3 - Primary Bath



Max Dimensions: 10'5" x 9'3"  
Calculated Area: 95 sq. ft  
Included: Yes

Heated: Yes  
Finished: Yes  
Enclosed: Yes  
Contiguous: Yes  
Permitted: Yes  
Wet space: Yes  
Addition: No  
Conversion: No

4021 Tredon Road, Mechanicsville, Hanover County, Virginia,  
United States, 23111

27 Floor 3 - Primary Bedroom



Max Dimensions: 17'4" x 24'4"  
Calculated Area: 404 sq. ft  
Included: Yes

Heated: Yes  
Finished: Yes  
Enclosed: Yes  
Contiguous: Yes  
Permitted: Yes  
Wet space: No  
Addition: No  
Conversion: No

28 Floor 3 - Bedroom



Max Dimensions: 11'2" x 11'10"  
Calculated Area: 132 sq. ft  
Included: Yes

Heated: Yes  
Finished: Yes  
Enclosed: Yes  
Contiguous: Yes  
Permitted: Yes  
Wet space: No  
Addition: No  
Conversion: No

29 Floor 3 - Bedroom



Max Dimensions: 13'1" x 12'4"  
Calculated Area: 162 sq. ft  
Included: Yes

Heated: Yes  
Finished: Yes  
Enclosed: Yes  
Contiguous: Yes  
Permitted: Yes  
Wet space: No  
Addition: No  
Conversion: No

4021 Tredon Road, Mechanicsville, Hanover County, Virginia,  
United States, 23111

30 Floor 3 - W.I.C.



Max Dimensions: 6'0" x 3'2"  
Calculated Area: 19 sq. ft  
Included: Yes

Heated: Yes  
Finished: Yes  
Enclosed: Yes  
Contiguous: Yes  
Permitted: Yes  
Wet space: No  
Addition: No  
Conversion: No

31 Floor 3 - Hall



Max Dimensions: 22'2" x 10'2"  
Calculated Area: 227 sq. ft  
Included: Yes

Heated: Yes  
Finished: Yes  
Enclosed: Yes  
Contiguous: Yes  
Permitted: Yes  
Wet space: No  
Addition: No  
Conversion: No