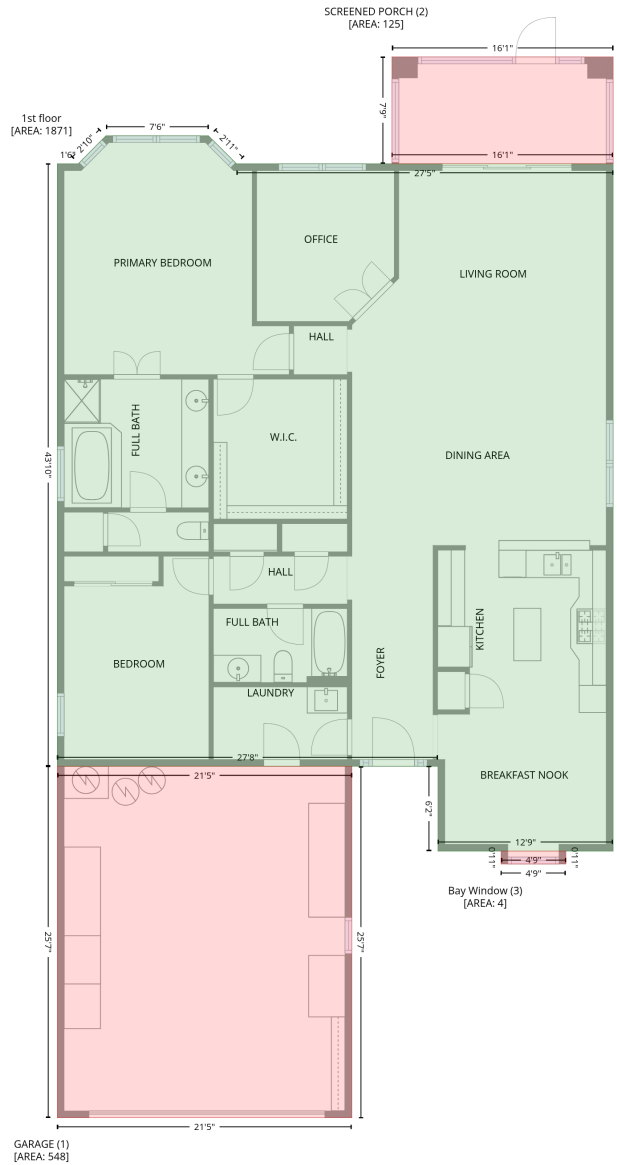


115 Old Blue Mountain Ln, 1530 Sun City Blvd STE 120, Georgetown, TX, US, 1530 Sun City Blvd STE 120

Gross Living Area: 1871 sq. ft

Level 1



Space	Area (sq. ft)	Calculation
1st floor (Living area)	1871	Coordinate Polygon Area Algorithm using inches $-((350 + 374.4) * (-150.1 - -125.7) + (374.4 + 703.1) * (-125.7 - -125.7) + (703.1 + 703.1) * (-125.7 - 474.8) + (703.1 + 550.3) * (474.8 - 474.8) + (550.3 + 550.3) * (474.8 - 400.8) + (550.3 + 218) * (400.8 - 400.8) + (218 + 218) * (400.8 - -125.7) + (218 + 236.5) * (-125.7 - -125.7) + (236.5 + 260.5) * (-125.7 - -150.1) + (260.5 + 350) * (-150.1 - -150.1)) * 0.5 + 0.00694$
GARAGE (Non-living area)	548	$-((475.2 + 475.2) * (400.8 - 707.9) + (475.2 + 218) * (707.9 - 707.9) + (218 + 218) * (707.9 - 400.8) + (218 + 475.2) * (400.8 - 400.8)) * 0.5 + 0.00694$

115 Old Blue Mountain Ln,1530 Sun City Blvd STE 120,Georgetown,TX,US, 1530 Sun City Blvd STE 120

Gross Living Area: 1871 sq. ft

Level 1

Space	Area (sq. ft)	Calculation <small>Coordinate Polygon Area Algorithm using inches</small>
SCREENED PORCH (Non-living area)	125	$-\left((703.1 + 703.1) * (-219 - -125.7) + (703.1 + 510.1) * (-125.7 - -125.7) + (510.1 + 510.1) * (-125.7 - -219) + (510.1 + 703.1) * (-219 - -219)\right) * 0.5 * 0.00694$
Bay Window (Non-living area)	4	$-\left((661.9 + 661.9) * (474.8 - 486.1) + (661.9 + 605.3) * (486.1 - 486.1) + (605.3 + 605.3) * (486.1 - 474.8) + (605.3 + 661.9) * (474.8 - 474.8)\right) * 0.5 * 0.00694$