

Home data report

2806 Theobald St, Shelbyville, IN, US



Total Area: 2555 sq. ft

1st Floor: 2555 sq. ft

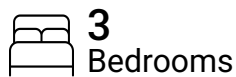
Excluded: Porch 45 sq. ft, Deck 394 sq. ft, Embedded window 4 sq. ft, Fireplace 11 sq. ft,

Walls: 137 sq. ft

Property summary



1 Floors



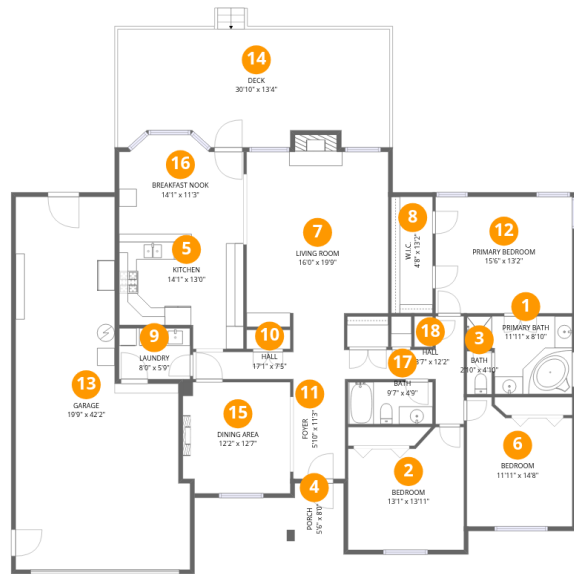
3 Bedrooms



2 Bathrooms



1 Garages



Room dimensions

Floor 1

Total:2555sqft

Excluded: 454sqft

#		Dimensions	sqft	Counted as living area
1	Primary Bath	11'11" x 8'10"	89 sq. ft	Yes
2	Bedroom	13'1" x 13'11"	161 sq. ft	Yes
3	Bath	2'10" x 4'10"	14 sq. ft	Yes
4	Porch	5'6" x 8'0"	45 sq. ft	No
5	Kitchen	14'1" x 13'0"	161 sq. ft	Yes
6	Bedroom	11'11" x 14'8"	154 sq. ft	Yes
7	Living Room	16'0" x 19'9"	310 sq. ft	Yes
8	W.I.C.	4'8" x 13'2"	62 sq. ft	Yes
9	Laundry	8'0" x 5'9"	46 sq. ft	Yes
10	Hall	17'1" x 7'5"	78 sq. ft	Yes
11	Foyer	5'10" x 11'3"	66 sq. ft	Yes

Home data report

2806 Theobald St,Shelbyville,IN,US

#		Dimensions	sqft	Counted as living area
12	Primary Bedroom	15'6" x 13'2"	204 sq. ft	Yes
13	Garage	19'9" x 42'2"	638 sq. ft	Yes
14	Deck	30'10" x 13'4"	394 sq. ft	No
15	Dining Area	12'2" x 12'7"	151 sq. ft	Yes
16	Breakfast Nook	14'1" x 11'3"	144 sq. ft	Yes
17	Bath	9'7" x 4'9"	45 sq. ft	Yes
18	Hall	13'7" x 12'2"	73 sq. ft	Yes

1 Floor 1 - Primary Bath



Dimensions: 11'11" x 8'10"
Area: 89 sq. ft
Counted as living area: Yes

Heated: Yes
Finished: Yes
Enclosed: Yes
Contiguous: Yes
Permitted: Yes
Wet space: Yes
Addition: No
Conversion: No

2 Floor 1 - Bedroom



Dimensions: 13'1" x 13'11"
Area: 161 sq. ft
Counted as living area: Yes

Heated: Yes
Finished: Yes
Enclosed: Yes
Contiguous: Yes
Permitted: Yes
Wet space: No
Addition: No
Conversion: No

3 Floor 1 - Bath



Dimensions: 2'10" x 4'10"
Area: 14 sq. ft
Counted as living area: Yes

Heated: Yes
Finished: Yes
Enclosed: Yes
Contiguous: Yes
Permitted: Yes
Wet space: No
Addition: No
Conversion: No

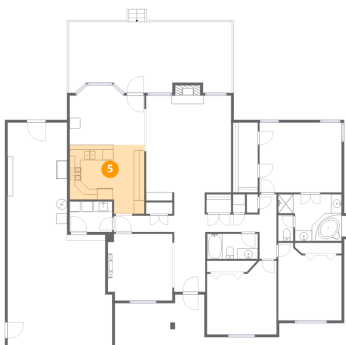
4 Floor 1 - Porch



Dimensions: 5'6" x 8'0"
Area: 45 sq. ft
Counted as living area: No

Heated: No
Finished: No
Enclosed: No
Contiguous: Yes
Permitted: Yes
Wet space: No
Addition: No
Conversion: No

5 Floor 1 - Kitchen



Dimensions: 14'1" x 13'0"
Area: 161 sq. ft
Counted as living area: Yes

Heated: Yes
Finished: Yes
Enclosed: Yes
Contiguous: Yes
Permitted: Yes
Wet space: No
Addition: No
Conversion: No

6 Floor 1 - Bedroom



Dimensions: 11'11" x 14'8"
Area: 154 sq. ft
Counted as living area: Yes

Heated: Yes
Finished: Yes
Enclosed: Yes
Contiguous: Yes
Permitted: Yes
Wet space: No
Addition: No
Conversion: No

7 Floor 1 - Living Room



Dimensions: 16'0" x 19'9"
Area: 310 sq. ft
Counted as living area: Yes

Heated: Yes
Finished: Yes
Enclosed: Yes
Contiguous: Yes
Permitted: Yes
Wet space: No
Addition: No
Conversion: No

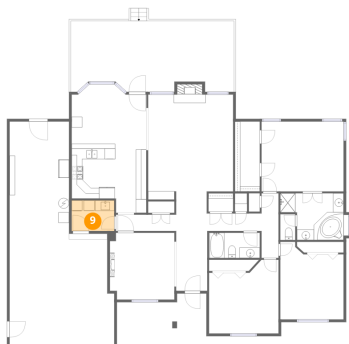
8 Floor 1 - W.I.C.



Dimensions: 4'8" x 13'2"
Area: 62 sq. ft
Counted as living area: Yes

Heated: Yes
Finished: Yes
Enclosed: Yes
Contiguous: Yes
Permitted: Yes
Wet space: No
Addition: No
Conversion: No

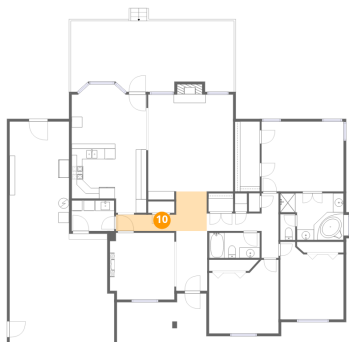
9 Floor 1 - Laundry



Dimensions: 8'0" x 5'9"
Area: 46 sq. ft
Counted as living area: Yes

Heated: Yes
Finished: Yes
Enclosed: Yes
Contiguous: Yes
Permitted: Yes
Wet space: No
Addition: No
Conversion: No

10 Floor 1 - Hall



Dimensions: 17'1" x 7'5"
Area: 78 sq. ft
Counted as living area: Yes

Heated: Yes
Finished: Yes
Enclosed: Yes
Contiguous: Yes
Permitted: Yes
Wet space: No
Addition: No
Conversion: No

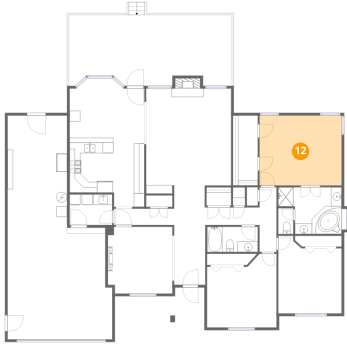
11 Floor 1 - Foyer



Dimensions: 5'10" x 11'3"
Area: 66 sq. ft
Counted as living area: Yes

Heated: Yes
Finished: Yes
Enclosed: Yes
Contiguous: Yes
Permitted: Yes
Wet space: No
Addition: No
Conversion: No

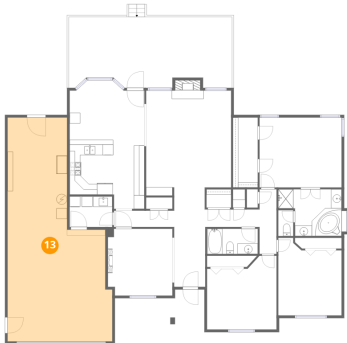
12 Floor 1 - Primary Bedroom



Dimensions: 15'6" x 13'2"
Area: 204 sq. ft
Counted as living area: Yes

Heated: Yes
Finished: Yes
Enclosed: Yes
Contiguous: Yes
Permitted: Yes
Wet space: No
Addition: No
Conversion: No

13 Floor 1 - Garage



Dimensions: 19'9" x 42'2"
Area: 638 sq. ft
Counted as living area: No

Heated: No
Finished: Yes
Enclosed: Yes
Contiguous: Yes
Permitted: Yes
Wet space: No
Addition: No
Conversion: No

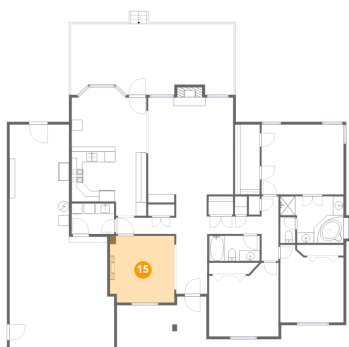
14 Floor 1 - Deck



Dimensions: 30'10" x 13'4"
Area: 394 sq. ft
Counted as living area: No

Heated: No
Finished: No
Enclosed: No
Contiguous: Yes
Permitted: Yes
Wet space: No
Addition: No
Conversion: No

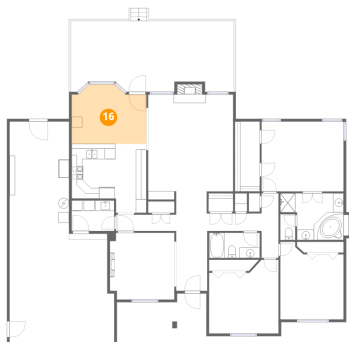
15 Floor 1 - Dining Area



Dimensions: 12'2" x 12'7"
Area: 151 sq. ft
Counted as living area: Yes

Heated: Yes
Finished: Yes
Enclosed: Yes
Contiguous: Yes
Permitted: Yes
Wet space: No
Addition: No
Conversion: No

16 Floor 1 - Breakfast Nook



Dimensions: 14'1" x 11'3"
Area: 144 sq. ft
Counted as living area: Yes

Heated: Yes
Finished: Yes
Enclosed: Yes
Contiguous: Yes
Permitted: Yes
Wet space: No
Addition: No
Conversion: No

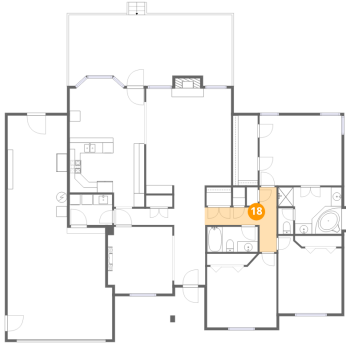
17 Floor 1 - Bath



Dimensions: 9'7" x 4'9"
Area: 45 sq. ft
Counted as living area: Yes

Heated: Yes
Finished: Yes
Enclosed: Yes
Contiguous: Yes
Permitted: Yes
Wet space: Yes
Addition: No
Conversion: No

18 Floor 1 - Hall



Dimensions: 13'7" x 12'2"
Area: 73 sq. ft
Counted as living area: Yes

Heated: Yes
Finished: Yes
Enclosed: Yes
Contiguous: Yes
Permitted: Yes
Wet space: No
Addition: No
Conversion: No