

BASEMENT
34'10" X 42'1"

TOTAL: 1682 sq. ft

Basement: 0 sq. ft, 1st floor: 1326 sq. ft, 2nd floor: 356 sq. ft

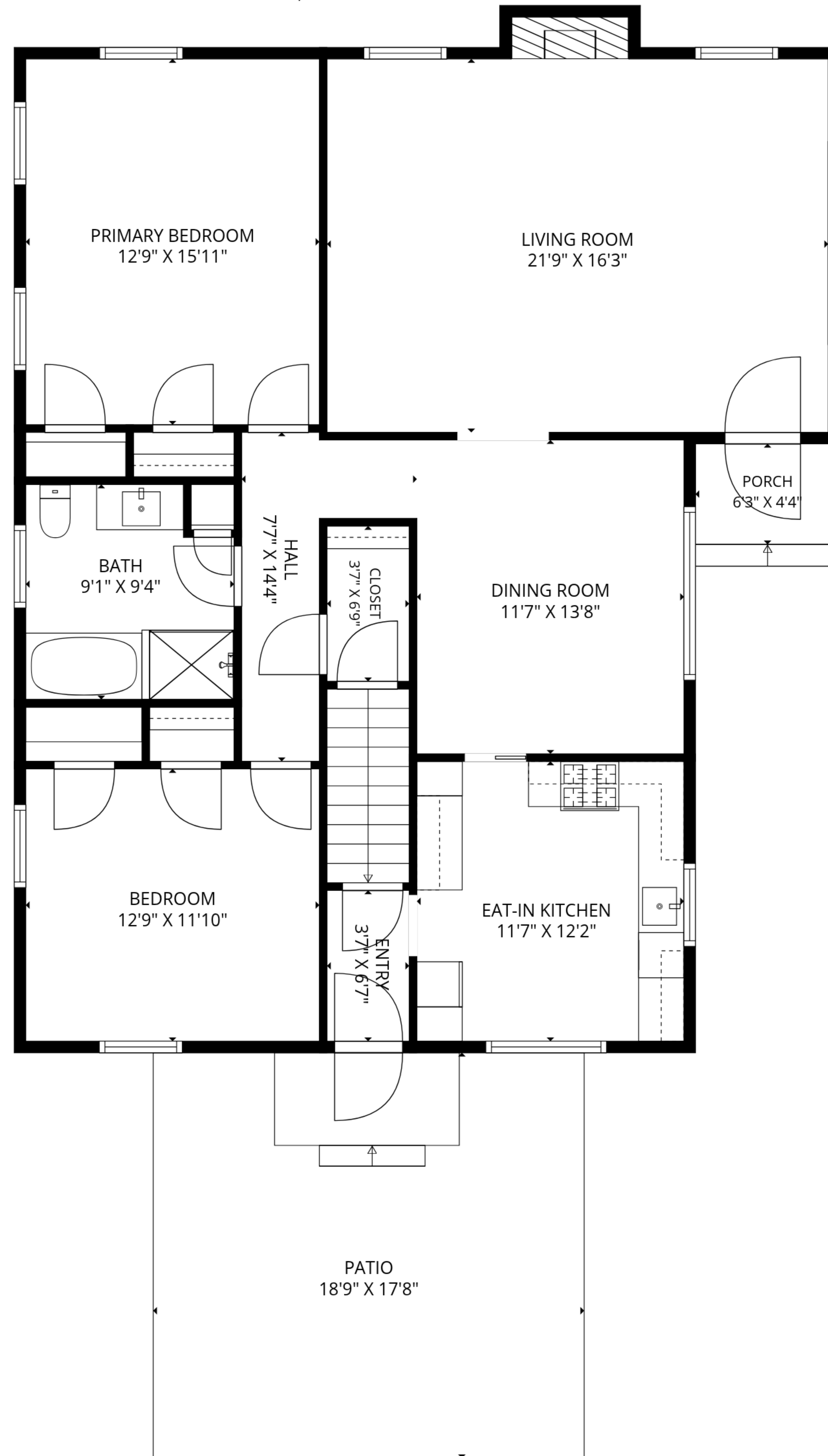
EXCLUDED AREAS: BASEMENT: 1303 sq. ft, PATIO: 330 sq. ft, PORCH: 27 sq. ft,

FIREPLACE: 11 sq. ft, LOW CEILING: 247 sq. ft, ATTIC: 361 sq. ft,

WALLS: 236 sq. ft

Measurements Are Deemed Highly Reliable But Not Guaranteed

98 TOTOWA ROAD, TOTOWA



TOTAL: 1682 sq. ft

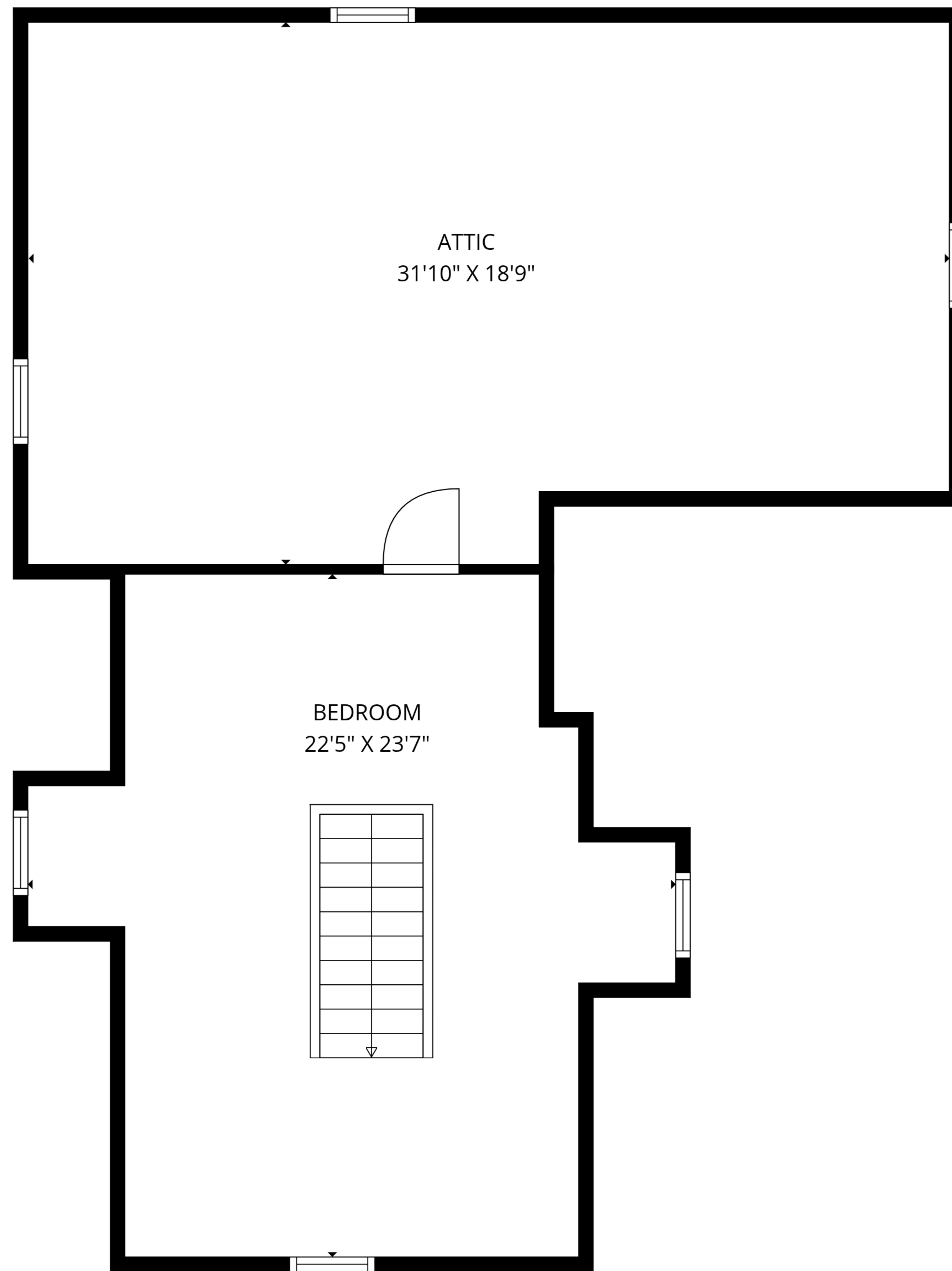
Basement: 0 sq. ft, 1st floor: 1326 sq. ft, 2nd floor: 356 sq. ft

EXCLUDED AREAS: BASEMENT: 1303 sq. ft, PATIO: 330 sq. ft, PORCH: 27 sq. ft,

FIREPLACE: 11 sq. ft, LOW CEILING: 247 sq. ft, ATTIC: 361 sq. ft,

WALLS: 236 sq. ft

Measurements Are Deemed Highly Reliable But Not Guaranteed



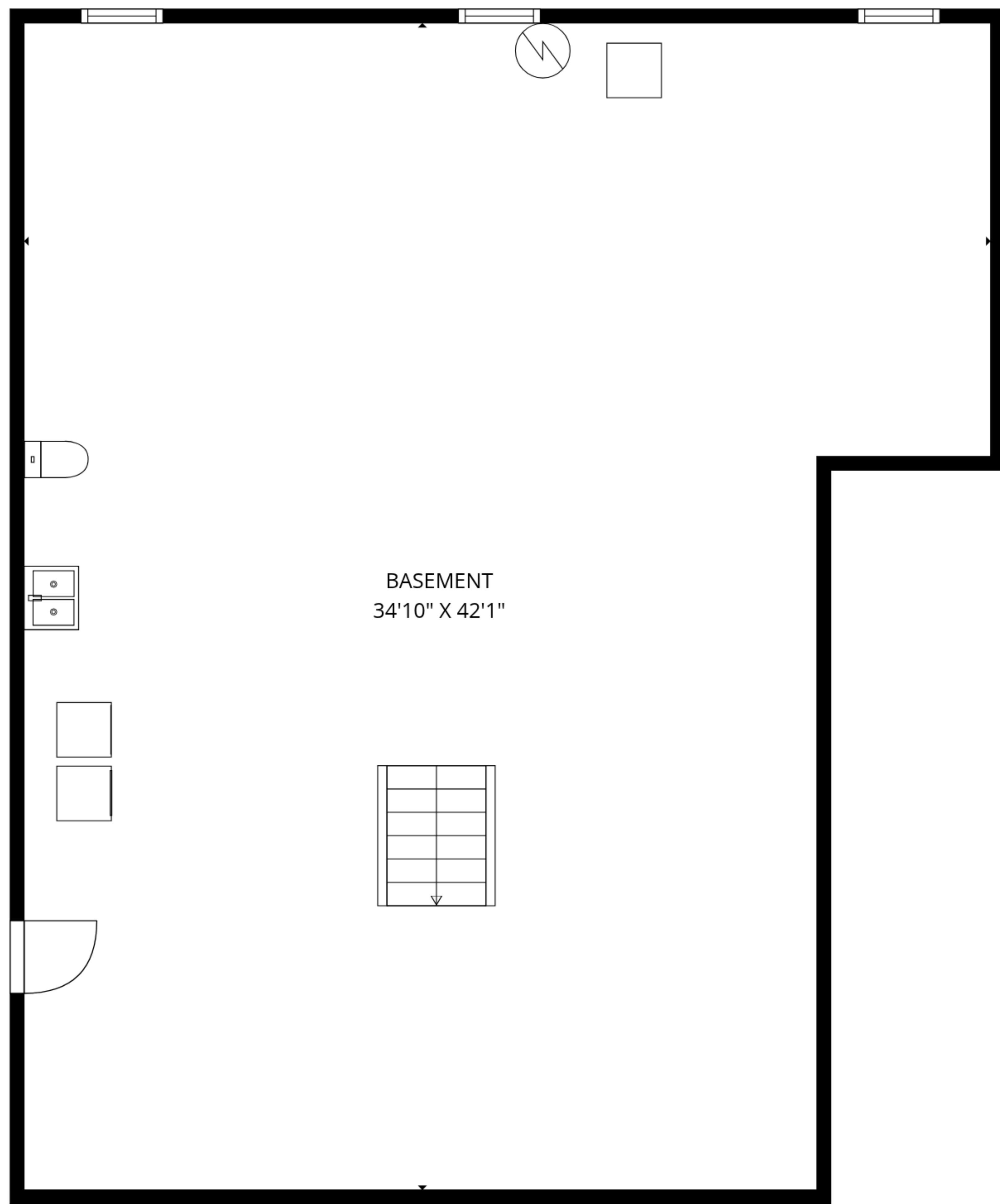
TOTAL: 1682 sq. ft

Basement: 0 sq. ft, 1st floor: 1326 sq. ft, 2nd floor: 356 sq. ft

EXCLUDED AREAS: BASEMENT: 1303 sq. ft, PATIO: 330 sq. ft, PORCH: 27 sq. ft,

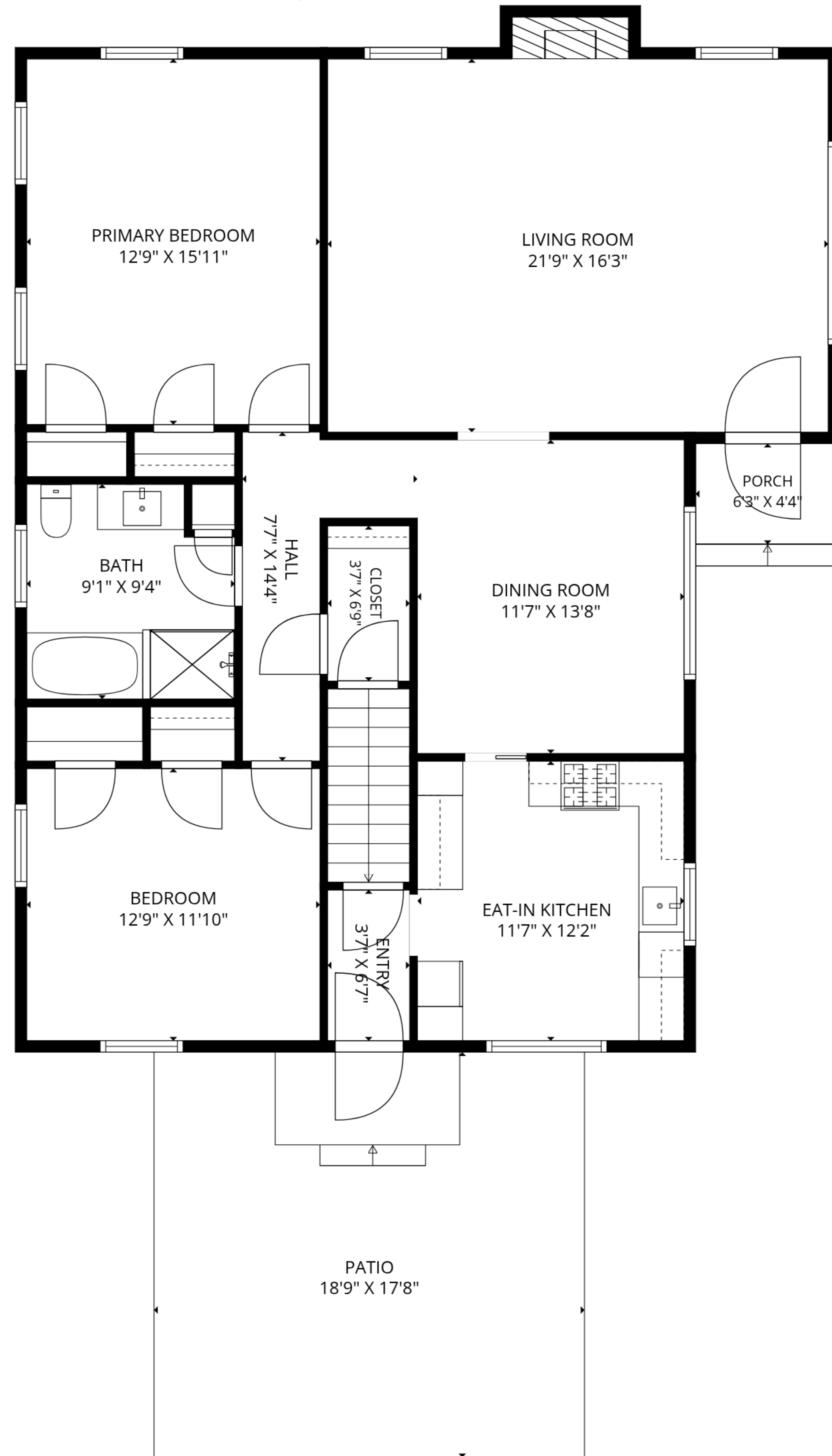
FIREPLACE: 11 sq. ft, LOW CEILING: 247 sq. ft, ATTIC: 361 sq. ft,

WALLS: 236 sq. ft

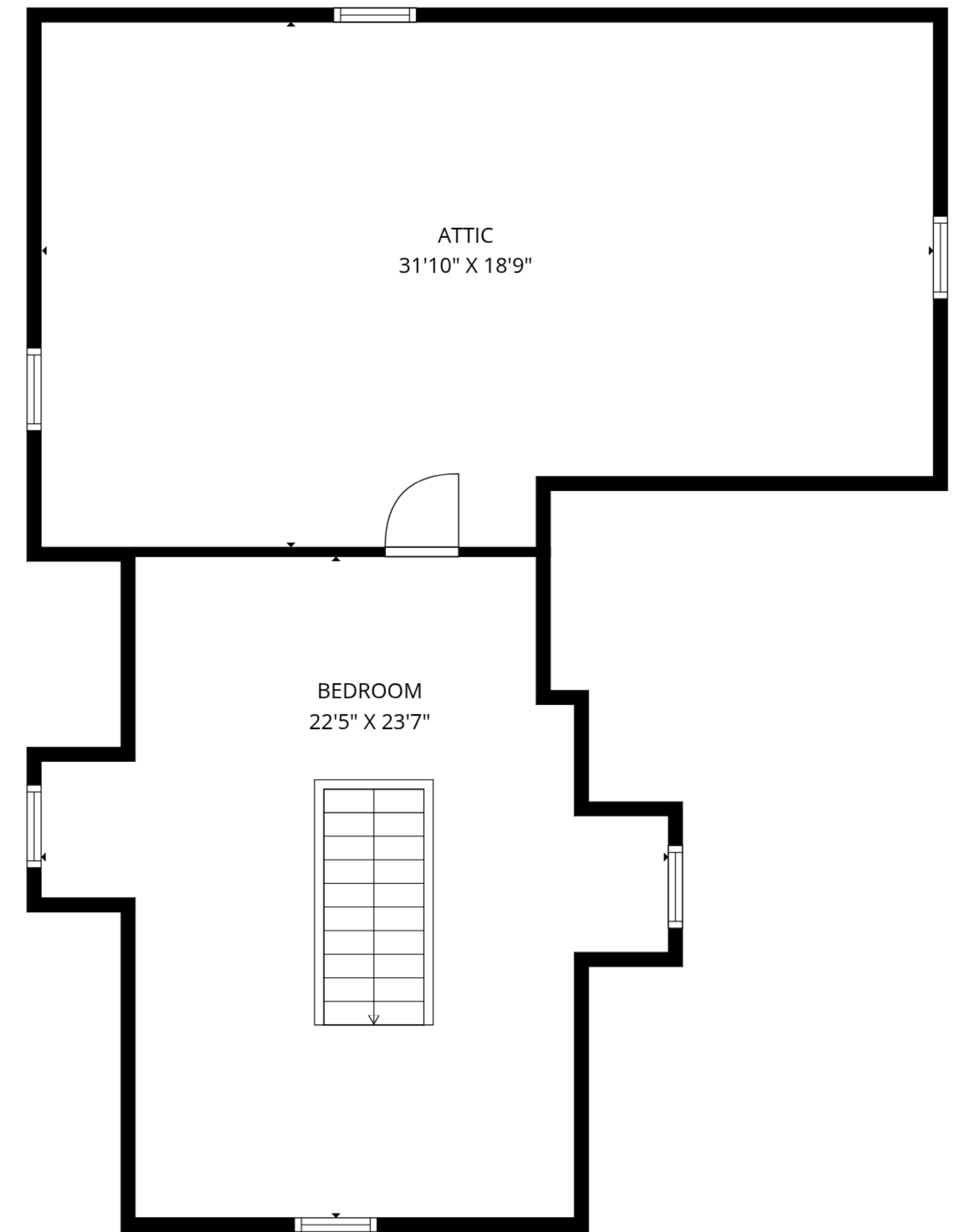


BASEMENT
34'10" X 42'1"

BASEMENT



1ST FLOOR



2ND FLOOR

TOTAL: 1682 sq. ft
Basement: 0 sq. ft, 1st floor: 1326 sq. ft, 2nd floor: 356 sq. ft
EXCLUDED AREAS: BASEMENT: 1303 sq. ft, PATIO: 330 sq. ft, PORCH: 27 sq. ft,
FIREPLACE: 11 sq. ft, LOW CEILING: 247 sq. ft, ATTIC: 361 sq. ft,
WALLS: 236 sq. ft