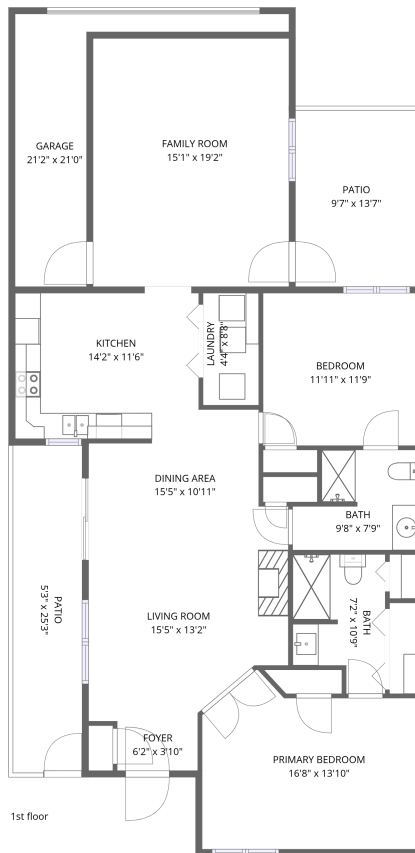


Home data report

407 Windward Lane, Roanoke, Virginia 24018, United States



Total Area: 1400 sq. ft

1st Floor: 1400 sq. ft

Excluded: Garage 138 sq. ft, Patio 266 sq. ft, Walls: 117 sq. ft

Property summary



1
Floors



2
Bedrooms



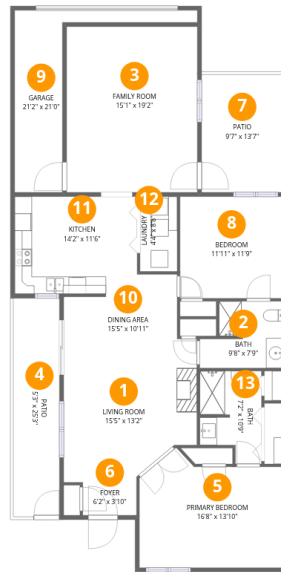
2
Bathrooms



1
Garages

Home data report

407 Windward Lane, Roanoke, Virginia 24018, United States



Room dimensions

Floor 1

Total:1400sqft

Excluded: 404sqft

#		Dimensions	sqft	Counted as living area
1	Living Room	15'5" x 13'2"	202 sq. ft	Yes
2	Bath	9'8" x 7'9"	75 sq. ft	Yes
3	Family Room	15'1" x 19'2"	289 sq. ft	Yes
4	Patio	5'3" x 25'3"	133 sq. ft	No
5	Primary Bedroom	16'8" x 13'10"	231 sq. ft	Yes
6	Foyer	6'2" x 3'10"	24 sq. ft	Yes
7	Patio	9'7" x 13'7"	130 sq. ft	No
8	Bedroom	11'11" x 11'9"	140 sq. ft	Yes
9	Garage	21'2" x 21'0"	444 sq. ft	No
10	Dining Area	15'5" x 10'11"	168 sq. ft	Yes
11	Kitchen	14'2" x 11'6"	162 sq. ft	Yes

Home data report

407 Windward Lane, Roanoke, Virginia 24018, United States

#		Dimensions	sqft	Counted as living area
12	Laundry	4'4" x 8'8"	37 sq. ft	Yes
13	Bath	7'2" x 10'9"	77 sq. ft	Yes

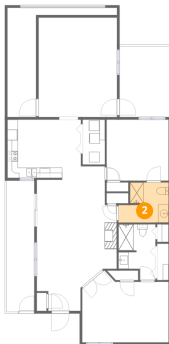
1 Floor 1 - Living Room



Dimensions: 15'5" x 13'2"
Area: 202 sq. ft
Counted as living area: Yes

Heated: Yes
Finished: Yes
Enclosed: Yes
Contiguous: Yes
Permitted: Yes
Wet space: No
Addition: No
Conversion: No

2 Floor 1 - Bath



Dimensions: 9'8" x 7'9"
Area: 75 sq. ft
Counted as living area: Yes

Heated: Yes
Finished: Yes
Enclosed: Yes
Contiguous: Yes
Permitted: Yes
Wet space: Yes
Addition: No
Conversion: No

3 Floor 1 - Family Room



Dimensions: 15'1" x 19'2"
Area: 289 sq. ft
Counted as living area: Yes

Heated: Yes
Finished: Yes
Enclosed: Yes
Contiguous: Yes
Permitted: Yes
Wet space: No
Addition: No
Conversion: No

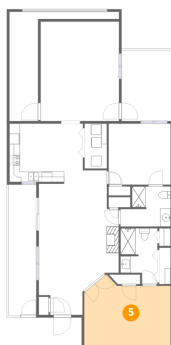
4 Floor 1 - Patio



Dimensions: 5'3" x 25'3"
Area: 133 sq. ft
Counted as living area: No

Heated: No
Finished: No
Enclosed: No
Contiguous: Yes
Permitted: Yes
Wet space: No
Addition: No
Conversion: No

5 Floor 1 - Primary Bedroom



Dimensions: 16'8" x 13'10"
Area: 231 sq. ft
Counted as living area: Yes

Heated: Yes
Finished: Yes
Enclosed: Yes
Contiguous: Yes
Permitted: Yes
Wet space: No
Addition: No
Conversion: No

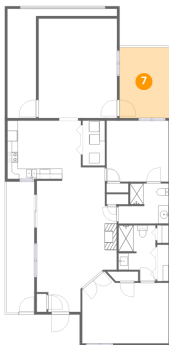
6 Floor 1 - Foyer



Dimensions: 6'2" x 3'10"
Area: 24 sq. ft
Counted as living area: Yes

Heated: Yes
Finished: Yes
Enclosed: Yes
Contiguous: Yes
Permitted: Yes
Wet space: No
Addition: No
Conversion: No

7 Floor 1 - Patio



Dimensions: 9'7" x 13'7"
Area: 130 sq. ft
Counted as living area: No

Heated: No
Finished: No
Enclosed: No
Contiguous: Yes
Permitted: Yes
Wet space: No
Addition: No
Conversion: No

8 Floor 1 - Bedroom



Dimensions: 11'11" x 11'9"
Area: 140 sq. ft
Counted as living area: Yes

Heated: Yes
Finished: Yes
Enclosed: Yes
Contiguous: Yes
Permitted: Yes
Wet space: No
Addition: No
Conversion: No

9 Floor 1 - Garage



Dimensions: 21'2" x 21'0"
Area: 444 sq. ft
Counted as living area: No

Heated: No
Finished: No
Enclosed: Yes
Contiguous: Yes
Permitted: Yes
Wet space: No
Addition: No
Conversion: No

10 Floor 1 - Dining Area



Dimensions: 15'5" x 10'11"
Area: 168 sq. ft
Counted as living area: Yes

Heated: Yes
Finished: Yes
Enclosed: Yes
Contiguous: Yes
Permitted: Yes
Wet space: No
Addition: No
Conversion: No

11 Floor 1 - Kitchen



Dimensions: 14'2" x 11'6"
Area: 162 sq. ft
Counted as living area: Yes

Heated: Yes
Finished: Yes
Enclosed: Yes
Contiguous: Yes
Permitted: Yes
Wet space: No
Addition: No
Conversion: No

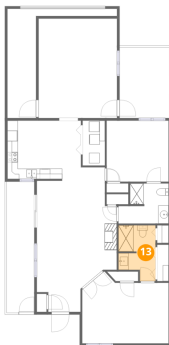
12 Floor 1 - Laundry



Dimensions: 4'4" x 8'8"
Area: 37 sq. ft
Counted as living area: Yes

Heated: Yes
Finished: Yes
Enclosed: Yes
Contiguous: Yes
Permitted: Yes
Wet space: No
Addition: No
Conversion: No

13 Floor 1 - Bath



Dimensions: 7'2" x 10'9"
Area: 77 sq. ft
Counted as living area: Yes

Heated: Yes
Finished: Yes
Enclosed: Yes
Contiguous: Yes
Permitted: Yes
Wet space: Yes
Addition: No
Conversion: No