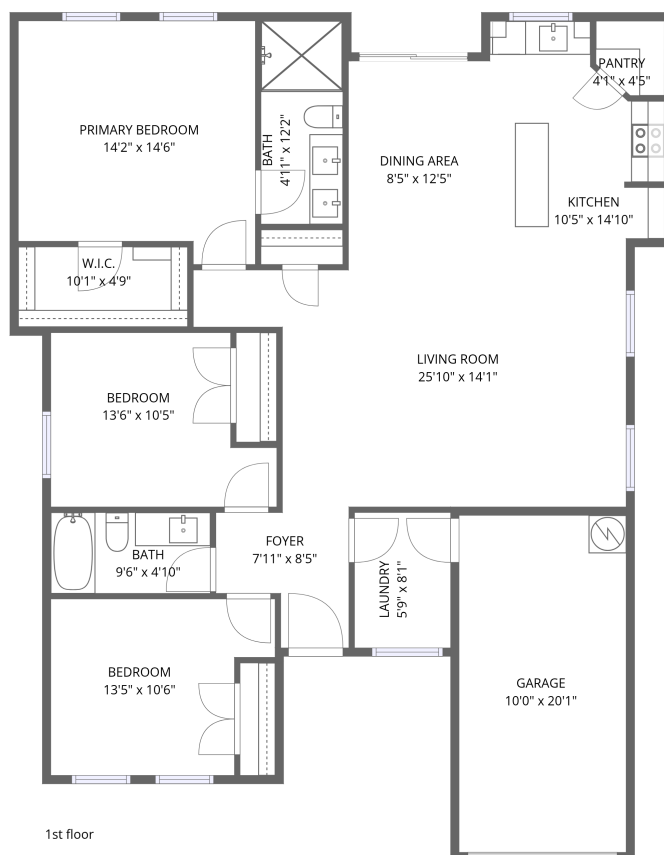


Home data report

1531 Corona Drive, Granbury, Hood County, Texas, United States, 76048



Total Area: 1341 sq. ft

1st Floor: 1341 sq. ft

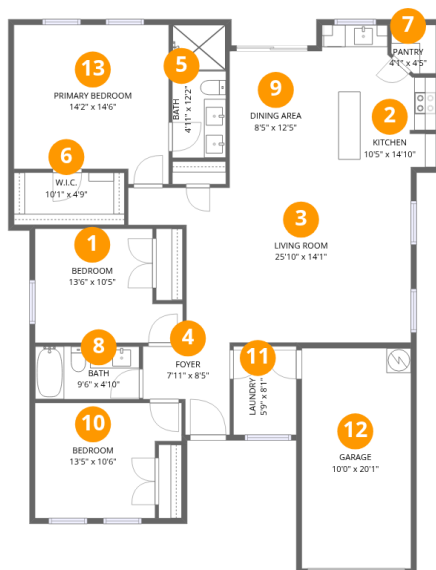
Excluded: Garage 200 sq. ft, Walls: 109 sq. ft

Property summary



Home data report

1531 Corona Drive, Granbury, Hood County, Texas, United States, 76048



Room dimensions

Floor 1

Total:1341sqft Excluded: 200sqft

#		Dimensions	sqft	Counted as living area
1	Bedroom	13'6" x 10'5"	140 sq. ft	Yes
2	Kitchen	10'5" x 14'10"	155 sq. ft	Yes
3	Living Room	25'10" x 14'1"	364 sq. ft	Yes
4	Foyer	7'11" x 8'5"	67 sq. ft	Yes
5	Bath	4'11" x 12'2"	59 sq. ft	Yes
6	W.I.C.	10'1" x 4'9"	48 sq. ft	Yes
7	Pantry	4'1" x 4'5"	18 sq. ft	Yes
8	Bath	9'6" x 4'10"	46 sq. ft	Yes
9	Dining Area	8'5" x 12'5"	105 sq. ft	Yes
10	Bedroom	13'5" x 10'6"	141 sq. ft	Yes
11	Laundry	5'9" x 8'1"	46 sq. ft	Yes

Home data report

1531 Corona Drive, Granbury, Hood County, Texas, United States, 76048

#		Dimensions	sqft	Counted as living area
12	Garage	10'0" x 20'1"	200 sq. ft	No
13	Primary Bedroom	14'2" x 14'6"	205 sq. ft	Yes

1531 Corona Drive, Granbury, Hood County, Texas, United States, 76048

1 Floor 1 - Bedroom



Dimensions: 13'6" x 10'5"
Area: 140 sq. ft
Counted as living area: Yes

Heated: Yes
Finished: Yes
Enclosed: Yes
Contiguous: Yes
Permitted: Yes
Wet space: No
Addition: No
Conversion: No

2 Floor 1 - Kitchen

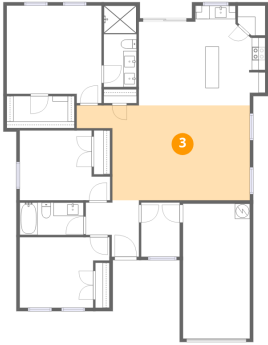


Dimensions: 10'5" x 14'10"
Area: 155 sq. ft
Counted as living area: Yes

Heated: Yes
Finished: Yes
Enclosed: Yes
Contiguous: Yes
Permitted: Yes
Wet space: No
Addition: No
Conversion: No

1531 Corona Drive, Granbury, Hood County, Texas, United States, 76048

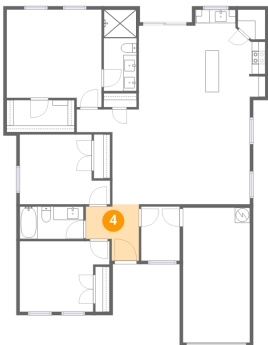
3 Floor 1 - Living Room



Dimensions: 25'10" x 14'1"
Area: 364 sq. ft
Counted as living area: Yes

Heated: Yes
Finished: Yes
Enclosed: Yes
Contiguous: Yes
Permitted: Yes
Wet space: No
Addition: No
Conversion: No

4 Floor 1 - Foyer



Dimensions: 7'11" x 8'5"
Area: 67 sq. ft
Counted as living area: Yes

Heated: Yes
Finished: Yes
Enclosed: Yes
Contiguous: Yes
Permitted: Yes
Wet space: No
Addition: No
Conversion: No

5 Floor 1 - Bath



Dimensions: 4'11" x 12'2"
Area: 59 sq. ft
Counted as living area: Yes

Heated: Yes
Finished: Yes
Enclosed: Yes
Contiguous: Yes
Permitted: Yes
Wet space: Yes
Addition: No
Conversion: No

6 Floor 1 - W.I.C.



Dimensions: 10'1" x 4'9"
Area: 48 sq. ft
Counted as living area: Yes

Heated: Yes
Finished: Yes
Enclosed: Yes
Contiguous: Yes
Permitted: Yes
Wet space: No
Addition: No
Conversion: No

7 Floor 1 - Pantry



Dimensions: 4'1" x 4'5"
Area: 18 sq. ft
Counted as living area: Yes

Heated: Yes
Finished: Yes
Enclosed: Yes
Contiguous: Yes
Permitted: Yes
Wet space: No
Addition: No
Conversion: No

8 Floor 1 - Bath



Dimensions: 9'6" x 4'10"
Area: 46 sq. ft
Counted as living area: Yes

Heated: Yes
Finished: Yes
Enclosed: Yes
Contiguous: Yes
Permitted: Yes
Wet space: Yes
Addition: No
Conversion: No

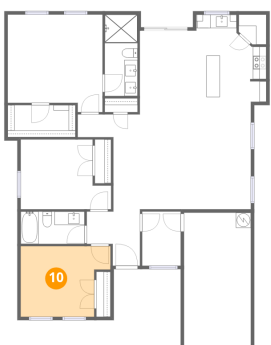
9 Floor 1 - Dining Area



Dimensions: 8'5" x 12'5"
Area: 105 sq. ft
Counted as living area: Yes

Heated: Yes
Finished: Yes
Enclosed: Yes
Contiguous: Yes
Permitted: Yes
Wet space: No
Addition: No
Conversion: No

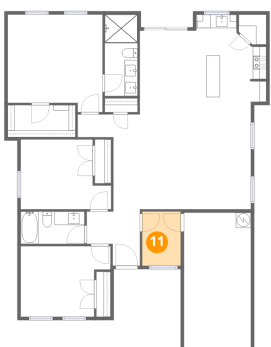
10 Floor 1 - Bedroom



Dimensions: 13'5" x 10'6"
Area: 141 sq. ft
Counted as living area: Yes

Heated: Yes
Finished: Yes
Enclosed: Yes
Contiguous: Yes
Permitted: Yes
Wet space: No
Addition: No
Conversion: No

11 Floor 1 - Laundry



Dimensions: 5'9" x 8'1"
Area: 46 sq. ft
Counted as living area: Yes

Heated: Yes
Finished: Yes
Enclosed: Yes
Contiguous: Yes
Permitted: Yes
Wet space: No
Addition: No
Conversion: No

12 Floor 1 - Garage



Dimensions: 10'0" x 20'1"
Area: 200 sq. ft
Counted as living area: No

Heated: No
Finished: No
Enclosed: Yes
Contiguous: Yes
Permitted: Yes
Wet space: No
Addition: No
Conversion: No

13 Floor 1 - Primary Bedroom



Dimensions: 14'2" x 14'6"
Area: 205 sq. ft
Counted as living area: Yes

Heated: Yes
Finished: Yes
Enclosed: Yes
Contiguous: Yes
Permitted: Yes
Wet space: No
Addition: No
Conversion: No