

## Home data report

610 Lou Ann Street, Wiley Court, Salem, Salem city, Virginia,  
United States, 24153



**Total Area: 2770 sq. ft**

1st Floor: 1314 sq. ft, 2nd Floor: 1456 sq. ft

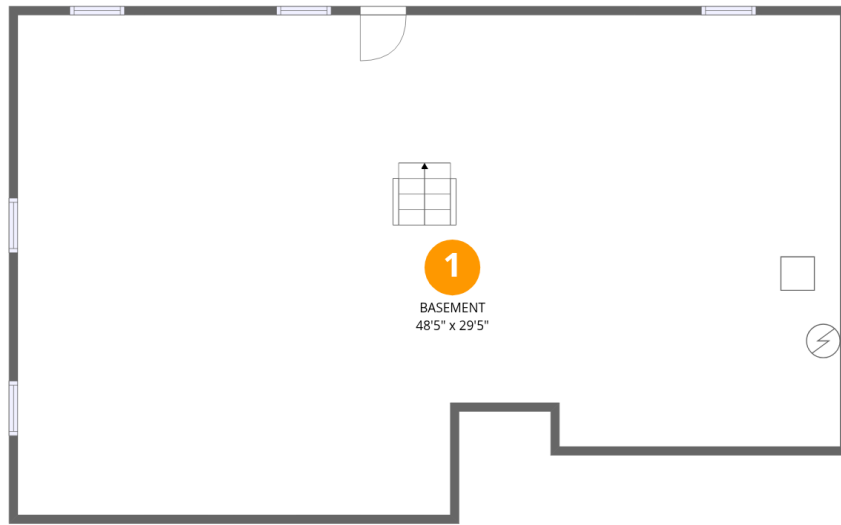
Excluded: Garage 349 sq. ft, Patio 223 sq. ft, Porch 23 sq. ft, Fireplace 8 sq. ft, Walls: 203 sq. ft

## Property summary



Home data report

610 Lou Ann Street, Wiley Court, Salem, Salem city, Virginia,  
United States, 24153



## Room dimensions

Floor 1

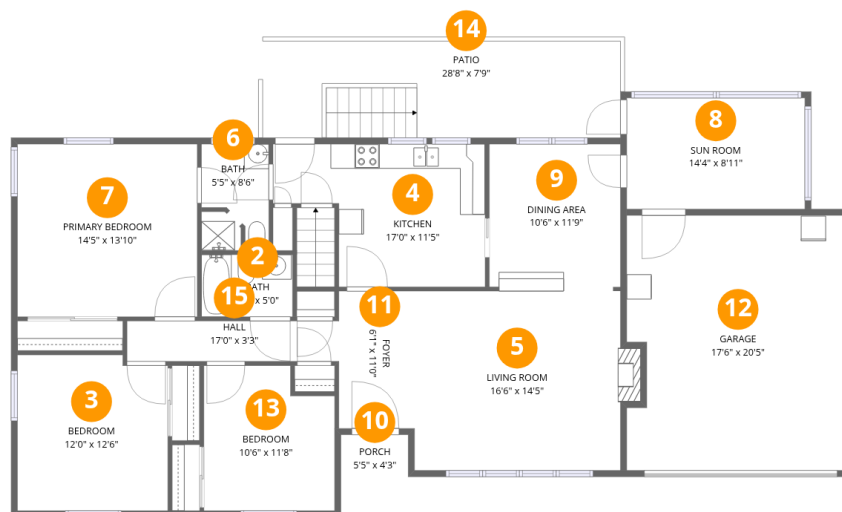
Total:1314sqft

Excluded: 0sqft

#		Dimensions	sqft	Counted as living area
1	Basement	48'5" x 29'5"	1422 sq. ft	Yes

## Home data report

610 Lou Ann Street, Wiley Court, Salem, Salem city, Virginia, United States, 24153



## Room dimensions

Floor 2

Total:1456sqft Excluded: 603sqft

#		Dimensions	sqft	Counted as living area
2	Bath	7'4" x 5'0"	36 sq. ft	Yes
3	Bedroom	12'0" x 12'6"	150 sq. ft	Yes
4	Kitchen	17'0" x 11'5"	195 sq. ft	Yes
5	Living Room	16'6" x 14'5"	238 sq. ft	Yes
6	Bath	5'5" x 8'6"	46 sq. ft	Yes
7	Primary Bedroom	14'5" x 13'10"	200 sq. ft	Yes
8	Sun Room	14'4" x 8'11"	127 sq. ft	Yes
9	Dining Area	10'6" x 11'9"	124 sq. ft	Yes
10	Porch	5'5" x 4'3"	23 sq. ft	No
11	Foyer	6'1" x 11'0"	67 sq. ft	Yes
12	Garage	17'6" x 20'5"	357 sq. ft	No

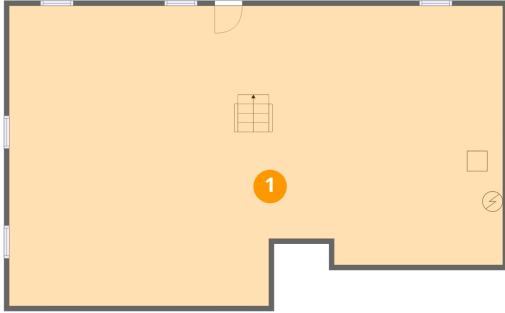
Home data report

**610 Lou Ann Street, Wiley Court, Salem, Salem city, Virginia,  
United States, 24153**

#		Dimensions	sqft	Counted as living area
13	Bedroom	10'6" x 11'8"	122 sq. ft	Yes
14	Patio	28'8" x 7'9"	221 sq. ft	No
15	Hall	17'0" x 3'3"	55 sq. ft	Yes

610 Lou Ann Street, Wiley Court, Salem, Salem city, Virginia,  
United States, 24153

## 1 Floor 1 - Basement



Dimensions: 48'5" x 29'5"  
Area: 1422 sq. ft  
Counted as living area: Yes

Heated: Yes  
Finished: Yes  
Enclosed: Yes  
Contiguous: Yes  
Permitted: Yes  
Wet space: No  
Addition: No  
Conversion: No

## 2 Floor 2 - Bath



Dimensions: 7'4" x 5'0"  
Area: 36 sq. ft  
Counted as living area: Yes

Heated: Yes  
Finished: Yes  
Enclosed: Yes  
Contiguous: Yes  
Permitted: Yes  
Wet space: Yes  
Addition: No  
Conversion: No

610 Lou Ann Street, Wiley Court, Salem, Salem city, Virginia,  
United States, 24153

### 3 Floor 2 - Bedroom



Dimensions: 12'0" x 12'6"  
Area: 150 sq. ft  
Counted as living area: Yes

Heated: Yes  
Finished: Yes  
Enclosed: Yes  
Contiguous: Yes  
Permitted: Yes  
Wet space: No  
Addition: No  
Conversion: No

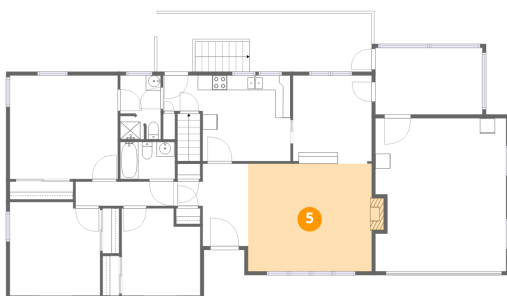
### 4 Floor 2 - Kitchen



Dimensions: 17'0" x 11'5"  
Area: 195 sq. ft  
Counted as living area: Yes

Heated: Yes  
Finished: Yes  
Enclosed: Yes  
Contiguous: Yes  
Permitted: Yes  
Wet space: No  
Addition: No  
Conversion: No

### 5 Floor 2 - Living Room



Dimensions: 16'6" x 14'5"  
Area: 238 sq. ft  
Counted as living area: Yes

Heated: Yes  
Finished: Yes  
Enclosed: Yes  
Contiguous: Yes  
Permitted: Yes  
Wet space: No  
Addition: No  
Conversion: No

610 Lou Ann Street, Wiley Court, Salem, Salem city, Virginia,  
United States, 24153

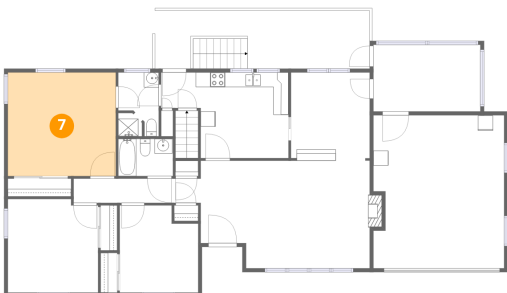
## 6 Floor 2 - Bath



Dimensions: 5'5" x 8'6"  
Area: 46 sq. ft  
Counted as living area: Yes

Heated: Yes  
Finished: Yes  
Enclosed: Yes  
Contiguous: Yes  
Permitted: Yes  
Wet space: Yes  
Addition: No  
Conversion: No

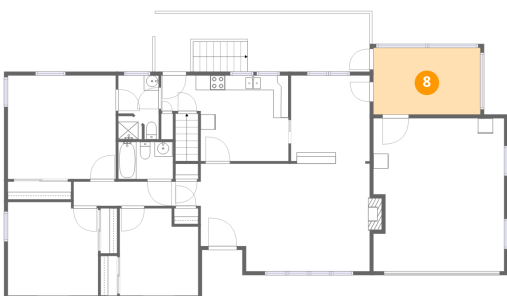
## 7 Floor 2 - Primary Bedroom



Dimensions: 14'5" x 13'10"  
Area: 200 sq. ft  
Counted as living area: Yes

Heated: Yes  
Finished: Yes  
Enclosed: Yes  
Contiguous: Yes  
Permitted: Yes  
Wet space: No  
Addition: No  
Conversion: No

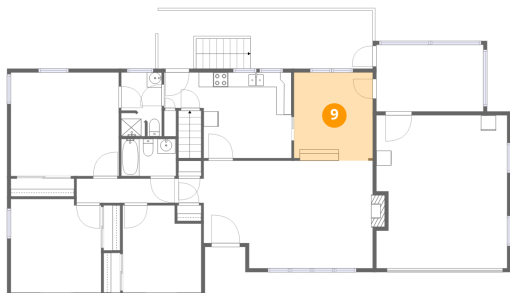
## 8 Floor 2 - Sun Room



Dimensions: 14'4" x 8'11"  
Area: 127 sq. ft  
Counted as living area: Yes

Heated: Yes  
Finished: Yes  
Enclosed: Yes  
Contiguous: Yes  
Permitted: Yes  
Wet space: No  
Addition: No  
Conversion: No

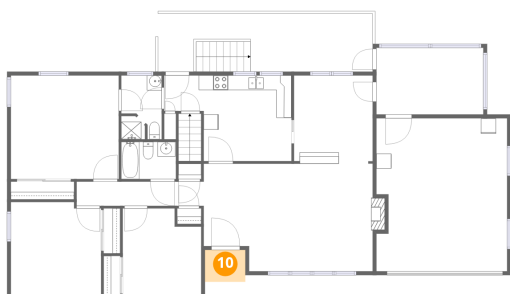
## 9 Floor 2 - Dining Area



Dimensions: 10'6" x 11'9"  
Area: 124 sq. ft  
Counted as living area: Yes

Heated: Yes  
Finished: Yes  
Enclosed: Yes  
Contiguous: Yes  
Permitted: Yes  
Wet space: No  
Addition: No  
Conversion: No

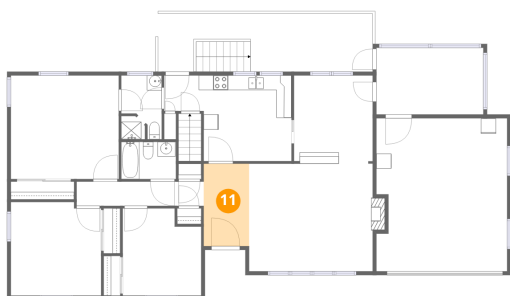
## 10 Floor 2 - Porch



Dimensions: 5'5" x 4'3"  
Area: 23 sq. ft  
Counted as living area: No

Heated: No  
Finished: No  
Enclosed: No  
Contiguous: Yes  
Permitted: Yes  
Wet space: No  
Addition: No  
Conversion: No

## 11 Floor 2 - Foyer



Dimensions: 6'1" x 11'0"  
Area: 67 sq. ft  
Counted as living area: Yes

Heated: Yes  
Finished: Yes  
Enclosed: Yes  
Contiguous: Yes  
Permitted: Yes  
Wet space: No  
Addition: No  
Conversion: No

610 Lou Ann Street, Wiley Court, Salem, Salem city, Virginia,  
United States, 24153

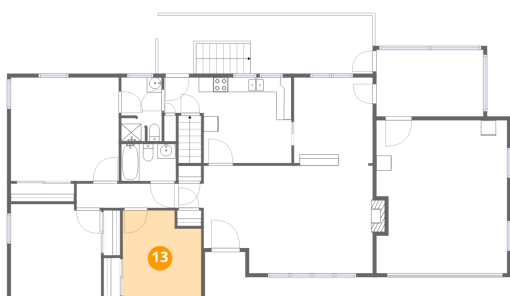
## 12 Floor 2 - Garage



Dimensions: 17'6" x 20'5"  
Area: 357 sq. ft  
Counted as living area: No

Heated: No  
Finished: No  
Enclosed: Yes  
Contiguous: Yes  
Permitted: Yes  
Wet space: No  
Addition: No  
Conversion: No

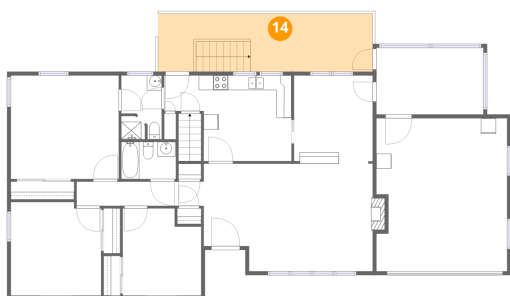
## 13 Floor 2 - Bedroom



Dimensions: 10'6" x 11'8"  
Area: 122 sq. ft  
Counted as living area: Yes

Heated: Yes  
Finished: Yes  
Enclosed: Yes  
Contiguous: Yes  
Permitted: Yes  
Wet space: No  
Addition: No  
Conversion: No

## 14 Floor 2 - Patio



Dimensions: 28'8" x 7'9"  
Area: 221 sq. ft  
Counted as living area: No

Heated: No  
Finished: No  
Enclosed: No  
Contiguous: Yes  
Permitted: Yes  
Wet space: No  
Addition: No  
Conversion: No

610 Lou Ann Street, Wiley Court, Salem, Salem city, Virginia,  
United States, 24153

**15** Floor 2 - Hall



Dimensions: 17'0" x 3'3"  
Area: 55 sq. ft  
Counted as living area: Yes

Heated: Yes  
Finished: Yes  
Enclosed: Yes  
Contiguous: Yes  
Permitted: Yes  
Wet space: No  
Addition: No  
Conversion: No