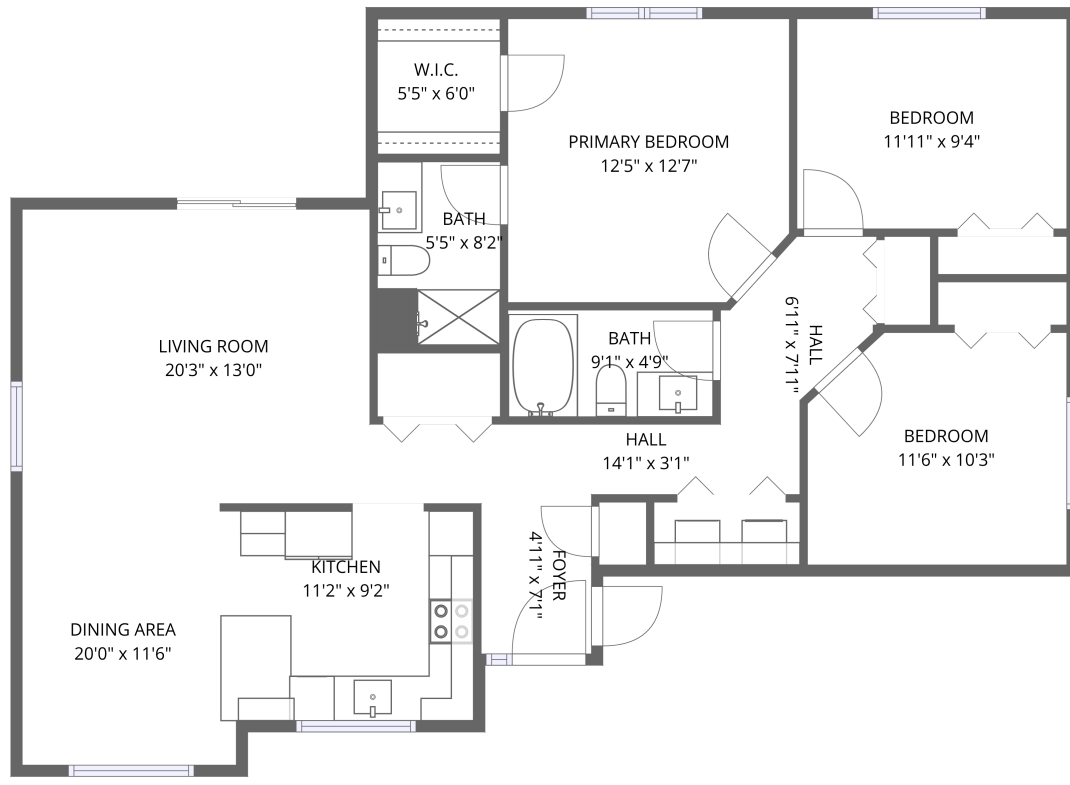


Home data report

1784 Whitcomb Dr NW, Salem, OR, US



1st floor

Total Area: 1161 sq. ft

1st Floor: 1161 sq. ft

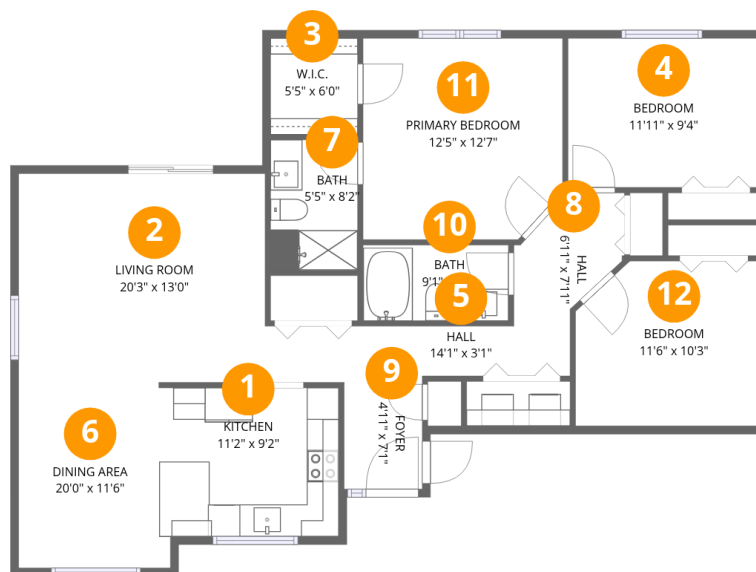
Excluded: Walls: 81 sq. ft

Property summary

 **1** Floors

 **3** Bedrooms

 **2** Bathrooms



Room dimensions

Floor 1

Total:1161sqft Excluded: 0sqft

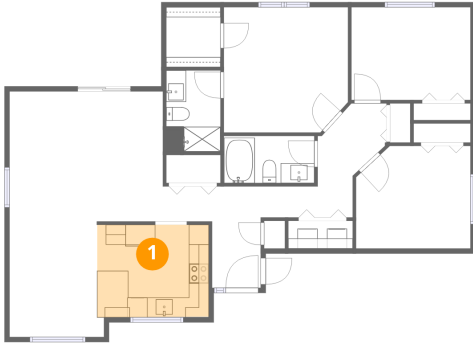
#		Dimensions	sqft	Counted as living area
1	Kitchen	11'2" x 9'2"	103 sq. ft	Yes
2	Living Room	20'3" x 13'0"	218 sq. ft	Yes
3	W.I.C.	5'5" x 6'0"	33 sq. ft	Yes
4	Bedroom	11'11" x 9'4"	111 sq. ft	Yes
5	Hall	14'1" x 3'1"	44 sq. ft	Yes
6	Dining Area	20'0" x 11'6"	103 sq. ft	Yes
7	Bath	5'5" x 8'2"	40 sq. ft	Yes
8	Hall	6'11" x 7'11"	42 sq. ft	Yes
9	Foyer	4'11" x 7'1"	34 sq. ft	Yes
10	Bath	9'1" x 4'9"	43 sq. ft	Yes
11	Primary Bedroom	12'5" x 12'7"	152 sq. ft	Yes

Home data report

1784 Whitcomb Dr NW,Salem,OR,US

#		Dimensions	sqft	Counted as living area
12	Bedroom	11'6" x 10'3"	113 sq. ft	Yes

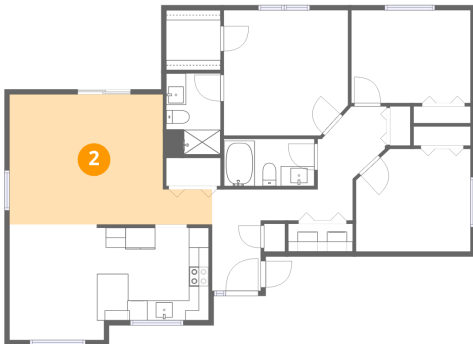
1 Floor 1 - Kitchen



Dimensions: 11'2" x 9'2"
Area: 103 sq. ft
Counted as living area: Yes

Heated: Yes
Finished: Yes
Enclosed: Yes
Contiguous: Yes
Permitted: Yes
Wet space: No
Addition: No
Conversion: No

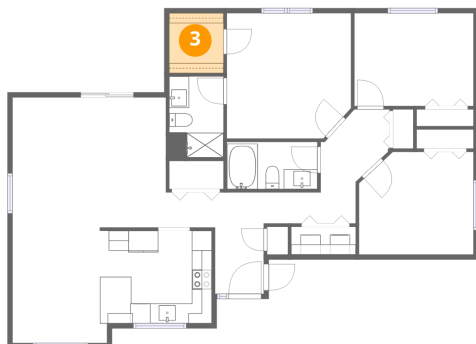
2 Floor 1 - Living Room



Dimensions: 20'3" x 13'0"
Area: 218 sq. ft
Counted as living area: Yes

Heated: Yes
Finished: Yes
Enclosed: Yes
Contiguous: Yes
Permitted: Yes
Wet space: No
Addition: No
Conversion: No

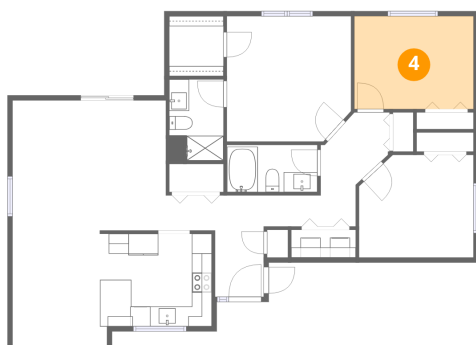
3 Floor 1 - W.I.C.



Dimensions: 5'5" x 6'0"
Area: 33 sq. ft
Counted as living area: Yes

Heated: Yes
Finished: Yes
Enclosed: Yes
Contiguous: Yes
Permitted: Yes
Wet space: No
Addition: No
Conversion: No

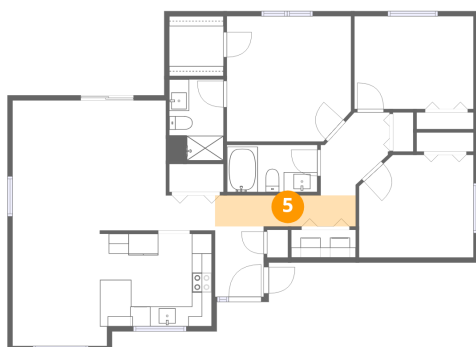
4 Floor 1 - Bedroom



Dimensions: 11'11" x 9'4"
Area: 111 sq. ft
Counted as living area: Yes

Heated: Yes
Finished: Yes
Enclosed: Yes
Contiguous: Yes
Permitted: Yes
Wet space: No
Addition: No
Conversion: No

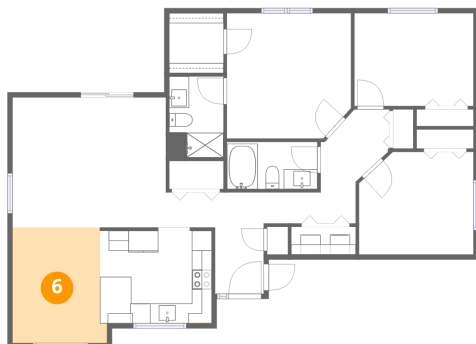
5 Floor 1 - Hall



Dimensions: 14'1" x 3'1"
Area: 44 sq. ft
Counted as living area: Yes

Heated: Yes
Finished: Yes
Enclosed: Yes
Contiguous: Yes
Permitted: Yes
Wet space: No
Addition: No
Conversion: No

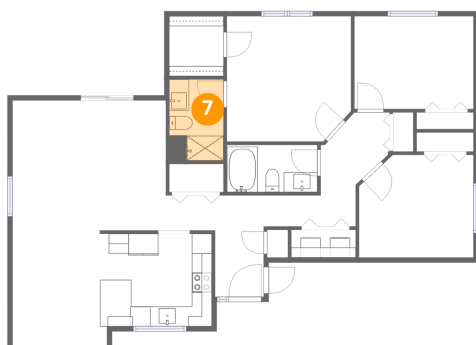
6 Floor 1 - Dining Area



Dimensions: 20'0" x 11'6"
Area: 103 sq. ft
Counted as living area: Yes

Heated: Yes
Finished: Yes
Enclosed: Yes
Contiguous: Yes
Permitted: Yes
Wet space: No
Addition: No
Conversion: No

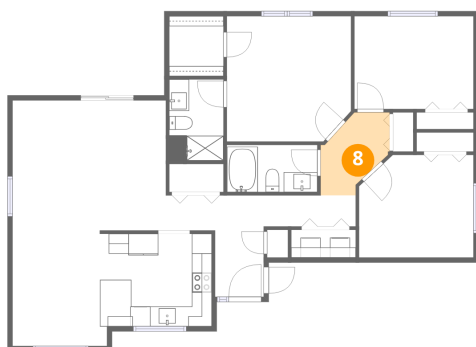
7 Floor 1 - Bath



Dimensions: 5'5" x 8'2"
Area: 40 sq. ft
Counted as living area: Yes

Heated: Yes
Finished: Yes
Enclosed: Yes
Contiguous: Yes
Permitted: Yes
Wet space: Yes
Addition: No
Conversion: No

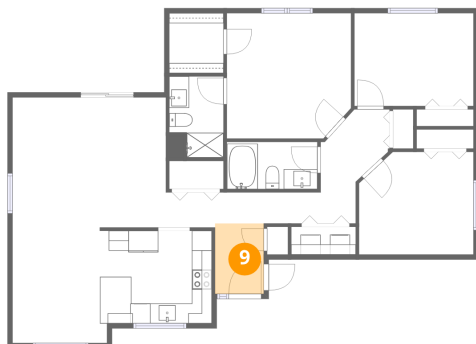
8 Floor 1 - Hall



Dimensions: 6'11" x 7'11"
Area: 42 sq. ft
Counted as living area: Yes

Heated: Yes
Finished: Yes
Enclosed: Yes
Contiguous: Yes
Permitted: Yes
Wet space: No
Addition: No
Conversion: No

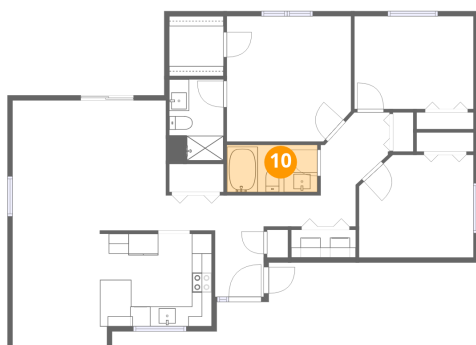
9 Floor 1 - Foyer



Dimensions: 4'11" x 7'1"
Area: 34 sq. ft
Counted as living area: Yes

Heated: Yes
Finished: Yes
Enclosed: Yes
Contiguous: Yes
Permitted: Yes
Wet space: No
Addition: No
Conversion: No

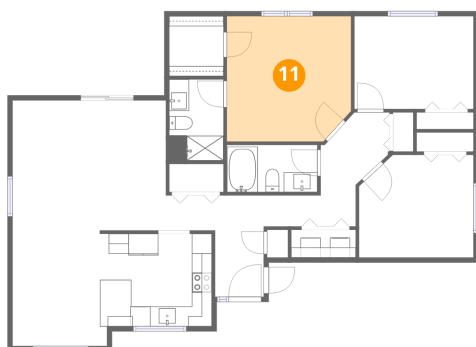
10 Floor 1 - Bath



Dimensions: 9'1" x 4'9"
Area: 43 sq. ft
Counted as living area: Yes

Heated: Yes
Finished: Yes
Enclosed: Yes
Contiguous: Yes
Permitted: Yes
Wet space: Yes
Addition: No
Conversion: No

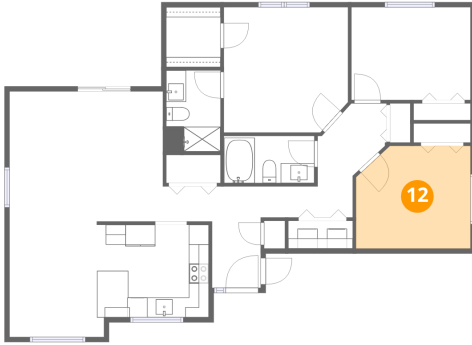
11 Floor 1 - Primary Bedroom



Dimensions: 12'5" x 12'7"
Area: 152 sq. ft
Counted as living area: Yes

Heated: Yes
Finished: Yes
Enclosed: Yes
Contiguous: Yes
Permitted: Yes
Wet space: No
Addition: No
Conversion: No

12 Floor 1 - Bedroom



Dimensions: 11'6" x 10'3"
Area: 113 sq. ft
Counted as living area: Yes

Heated: Yes
Finished: Yes
Enclosed: Yes
Contiguous: Yes
Permitted: Yes
Wet space: No
Addition: No
Conversion: No