

Home data report

1211 W 6th N St, Morristown, TN, US



1st floor

Total Area: 1622 sq. ft

1st Floor: 1622 sq. ft

Excluded: Fireplace 5 sq. ft, Walls: 108 sq. ft

Property summary

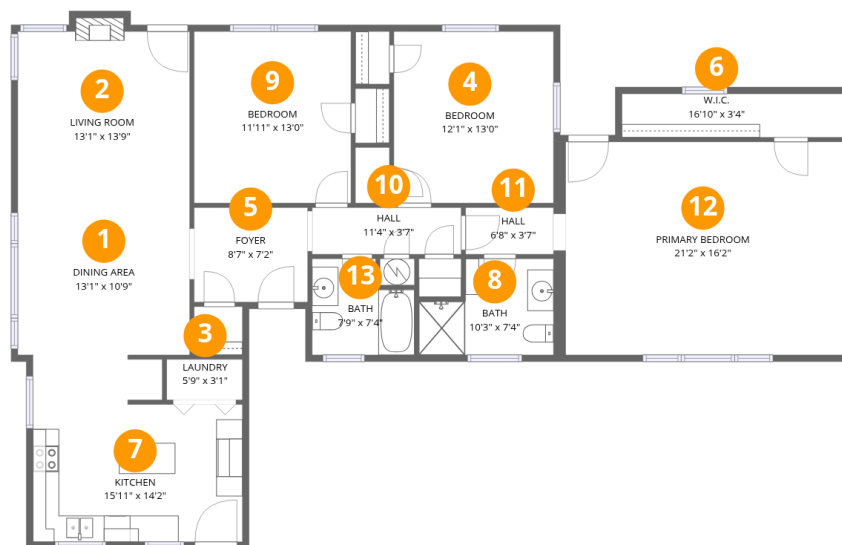
 **1** Floors

 **3** Bedrooms

 **2** Bathrooms

Scan captured on Tue, 10 Mar 2026 21:56:58 GMT

FLOOR PLAN CREATED BY CUBICASA APP. MEASUREMENTS ARE CONSIDERED RELIABLE BUT NOT ACCURATE.



Room dimensions

Floor 1

Total: 1622 sqft Excluded: 5 sqft

#		Dimensions	sqft	Counted as living area
1	Dining Area	13'1" x 10'9"	140 sq. ft	Yes
2	Living Room	13'1" x 13'9"	180 sq. ft	Yes
3	Laundry	5'9" x 3'1"	18 sq. ft	Yes
4	Bedroom	12'1" x 13'0"	158 sq. ft	Yes
5	Foyer	8'7" x 7'2"	62 sq. ft	Yes
6	W.I.C.	16'10" x 3'4"	56 sq. ft	Yes
7	Kitchen	15'11" x 14'2"	225 sq. ft	Yes
8	Bath	10'3" x 7'4"	75 sq. ft	Yes
9	Bedroom	11'11" x 13'0"	155 sq. ft	Yes
10	Hall	11'4" x 3'7"	40 sq. ft	Yes
11	Hall	6'8" x 3'7"	24 sq. ft	Yes

Home data report

1211 W 6th N St, Morristown, TN, US

#		Dimensions	sqft	Counted as living area
12	Primary Bedroom	21'2" x 16'2"	342 sq. ft	Yes
13	Bath	7'9" x 7'4"	57 sq. ft	Yes

1 Floor 1 - Dining Area



Dimensions: 13'1" x 10'9"
Area: 140 sq. ft
Counted as living area: Yes

Heated: Yes
Finished: Yes
Enclosed: Yes
Contiguous: Yes
Permitted: Yes
Wet space: No
Addition: No
Conversion: No

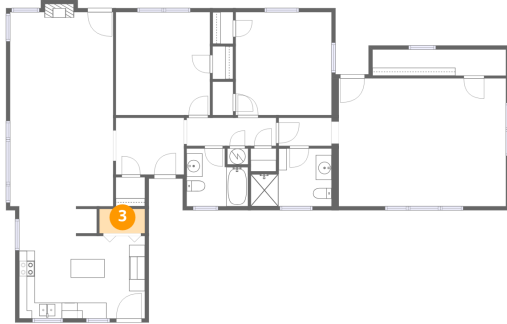
2 Floor 1 - Living Room



Dimensions: 13'1" x 13'9"
Area: 180 sq. ft
Counted as living area: Yes

Heated: Yes
Finished: Yes
Enclosed: Yes
Contiguous: Yes
Permitted: Yes
Wet space: No
Addition: No
Conversion: No

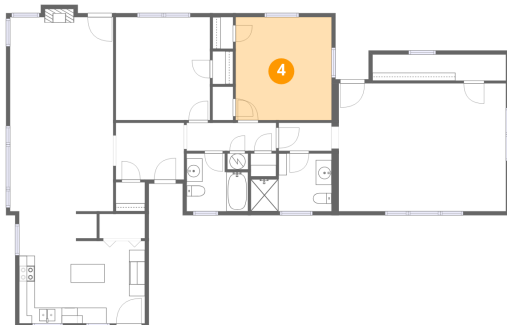
3 Floor 1 - Laundry



Dimensions: 5'9" x 3'1"
Area: 18 sq. ft
Counted as living area: Yes

Heated: Yes
Finished: Yes
Enclosed: Yes
Contiguous: Yes
Permitted: Yes
Wet space: No
Addition: No
Conversion: No

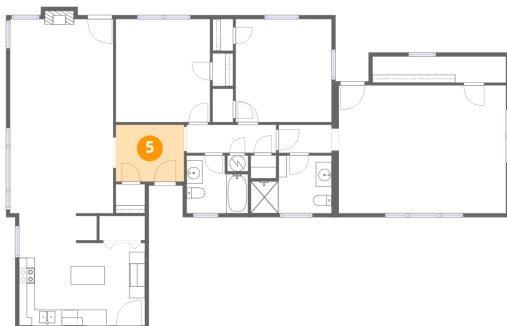
4 Floor 1 - Bedroom



Dimensions: 12'1" x 13'0"
Area: 158 sq. ft
Counted as living area: Yes

Heated: Yes
Finished: Yes
Enclosed: Yes
Contiguous: Yes
Permitted: Yes
Wet space: No
Addition: No
Conversion: No

5 Floor 1 - Foyer



Dimensions: 8'7" x 7'2"
Area: 62 sq. ft
Counted as living area: Yes

Heated: Yes
Finished: Yes
Enclosed: Yes
Contiguous: Yes
Permitted: Yes
Wet space: No
Addition: No
Conversion: No

6 Floor 1 - W.I.C.



Dimensions: 16'10" x 3'4"
Area: 56 sq. ft
Counted as living area: Yes

Heated: Yes
Finished: Yes
Enclosed: Yes
Contiguous: Yes
Permitted: Yes
Wet space: No
Addition: No
Conversion: No

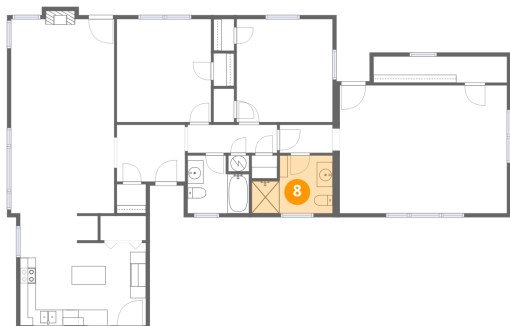
7 Floor 1 - Kitchen



Dimensions: 15'11" x 14'2"
Area: 225 sq. ft
Counted as living area: Yes

Heated: Yes
Finished: Yes
Enclosed: Yes
Contiguous: Yes
Permitted: Yes
Wet space: No
Addition: No
Conversion: No

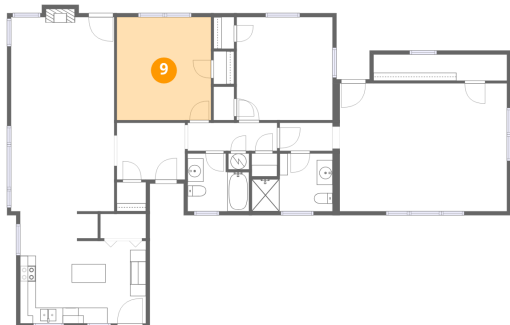
8 Floor 1 - Bath



Dimensions: 10'3" x 7'4"
Area: 75 sq. ft
Counted as living area: Yes

Heated: Yes
Finished: Yes
Enclosed: Yes
Contiguous: Yes
Permitted: Yes
Wet space: Yes
Addition: No
Conversion: No

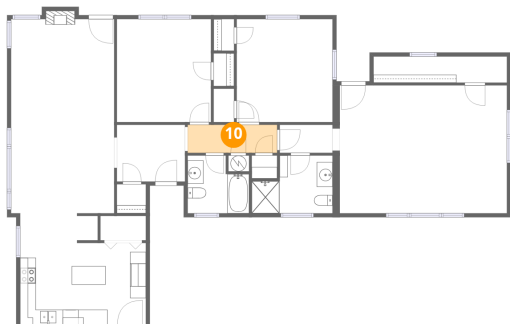
9 Floor 1 - Bedroom



Dimensions: 11'11" x 13'0"
Area: 155 sq. ft
Counted as living area: Yes

Heated: Yes
Finished: Yes
Enclosed: Yes
Contiguous: Yes
Permitted: Yes
Wet space: No
Addition: No
Conversion: No

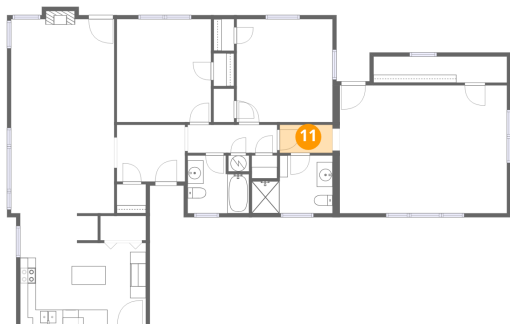
10 Floor 1 - Hall



Dimensions: 11'4" x 3'7"
Area: 40 sq. ft
Counted as living area: Yes

Heated: Yes
Finished: Yes
Enclosed: Yes
Contiguous: Yes
Permitted: Yes
Wet space: No
Addition: No
Conversion: No

11 Floor 1 - Hall



Dimensions: 6'8" x 3'7"
Area: 24 sq. ft
Counted as living area: Yes

Heated: Yes
Finished: Yes
Enclosed: Yes
Contiguous: Yes
Permitted: Yes
Wet space: No
Addition: No
Conversion: No

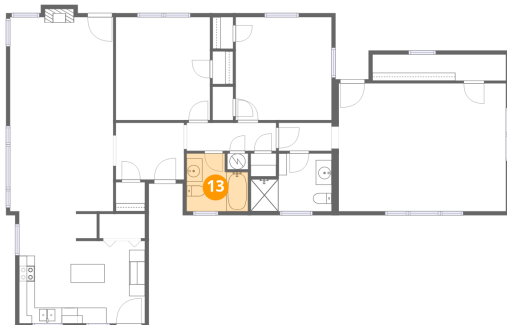
12 Floor 1 - Primary Bedroom



Dimensions: 21'2" x 16'2"
Area: 342 sq. ft
Counted as living area: Yes

Heated: Yes
Finished: Yes
Enclosed: Yes
Contiguous: Yes
Permitted: Yes
Wet space: No
Addition: No
Conversion: No

13 Floor 1 - Bath



Dimensions: 7'9" x 7'4"
Area: 57 sq. ft
Counted as living area: Yes

Heated: Yes
Finished: Yes
Enclosed: Yes
Contiguous: Yes
Permitted: Yes
Wet space: Yes
Addition: No
Conversion: No