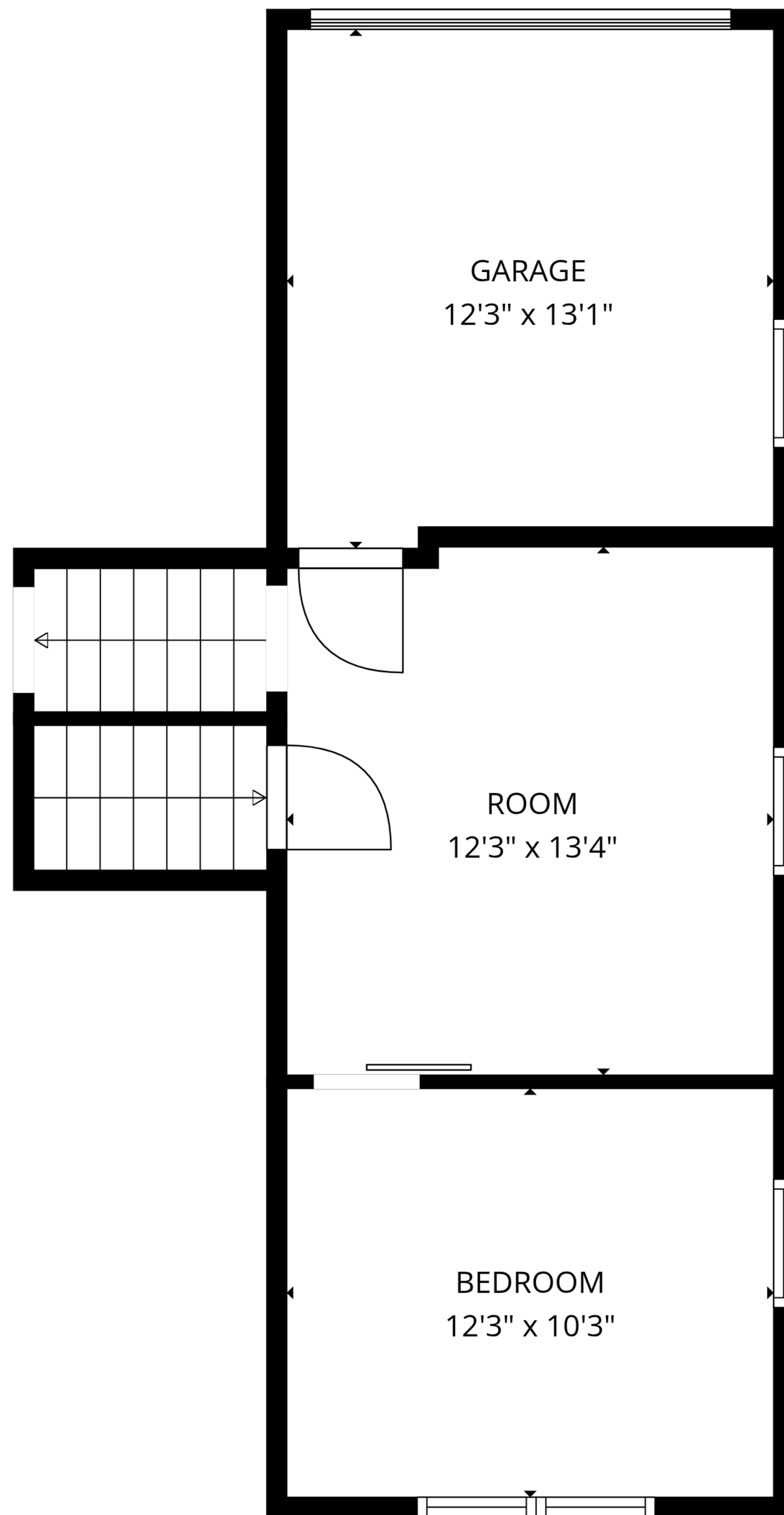


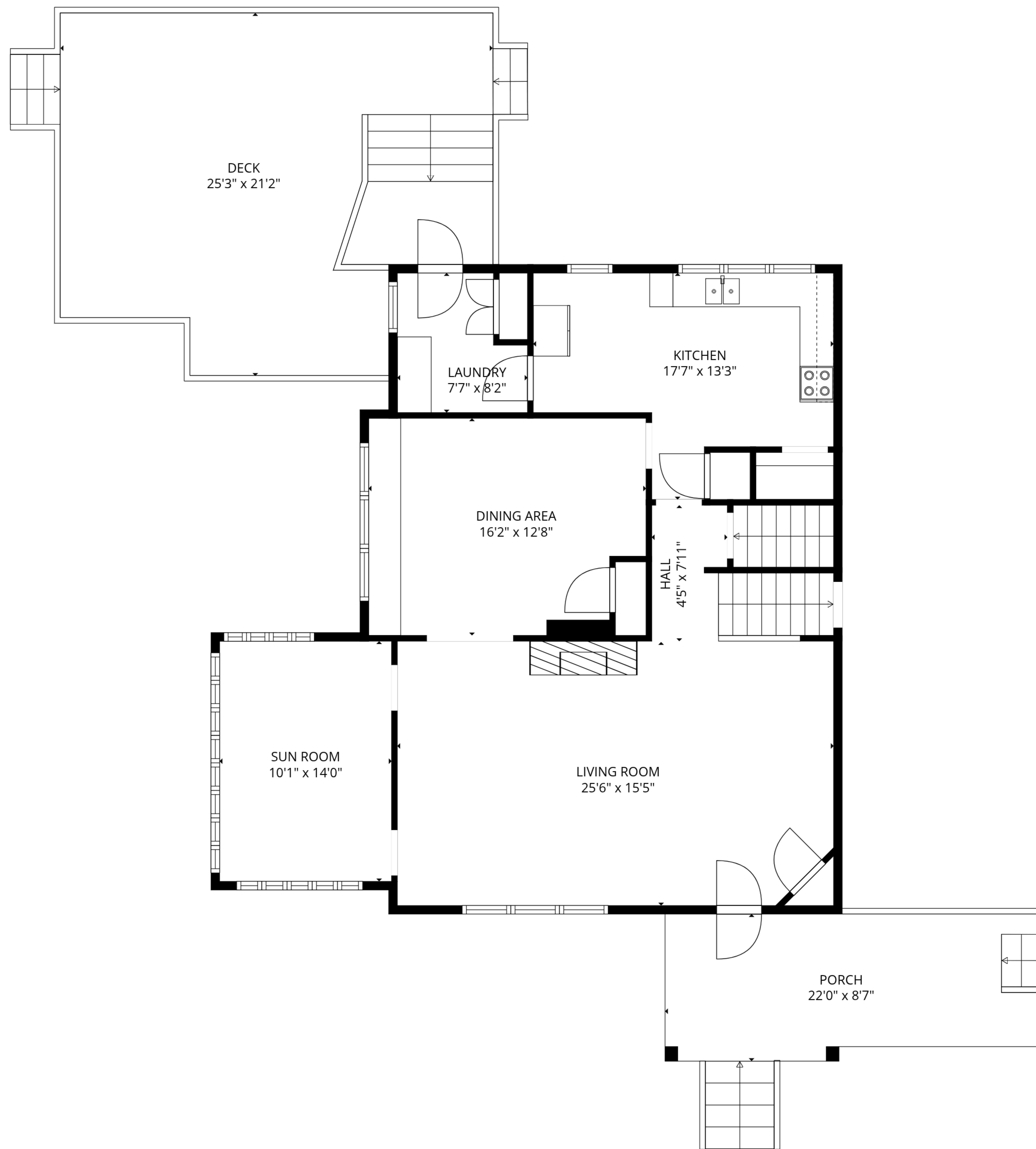
**TOTAL: 2617 sq. ft**

Basement: 0 sq. ft, 1st floor: 179 sq. ft, 2nd floor: 1109 sq. ft, 3rd floor: 501 sq. ft, 4th floor: 529 sq. ft, 5th floor: 299 sq. ft  
 EXCLUDED AREAS: BASEMENT: 927 sq. ft, STORAGE: 137 sq. ft, ROOM: 161 sq. ft,  
 GARAGE: 155 sq. ft, PORCH: 199 sq. ft, DECK: 486 sq. ft,  
 LOW CEILING: 222 sq. ft, ATTIC: 53 sq. ft, WALLS: 396 sq. ft



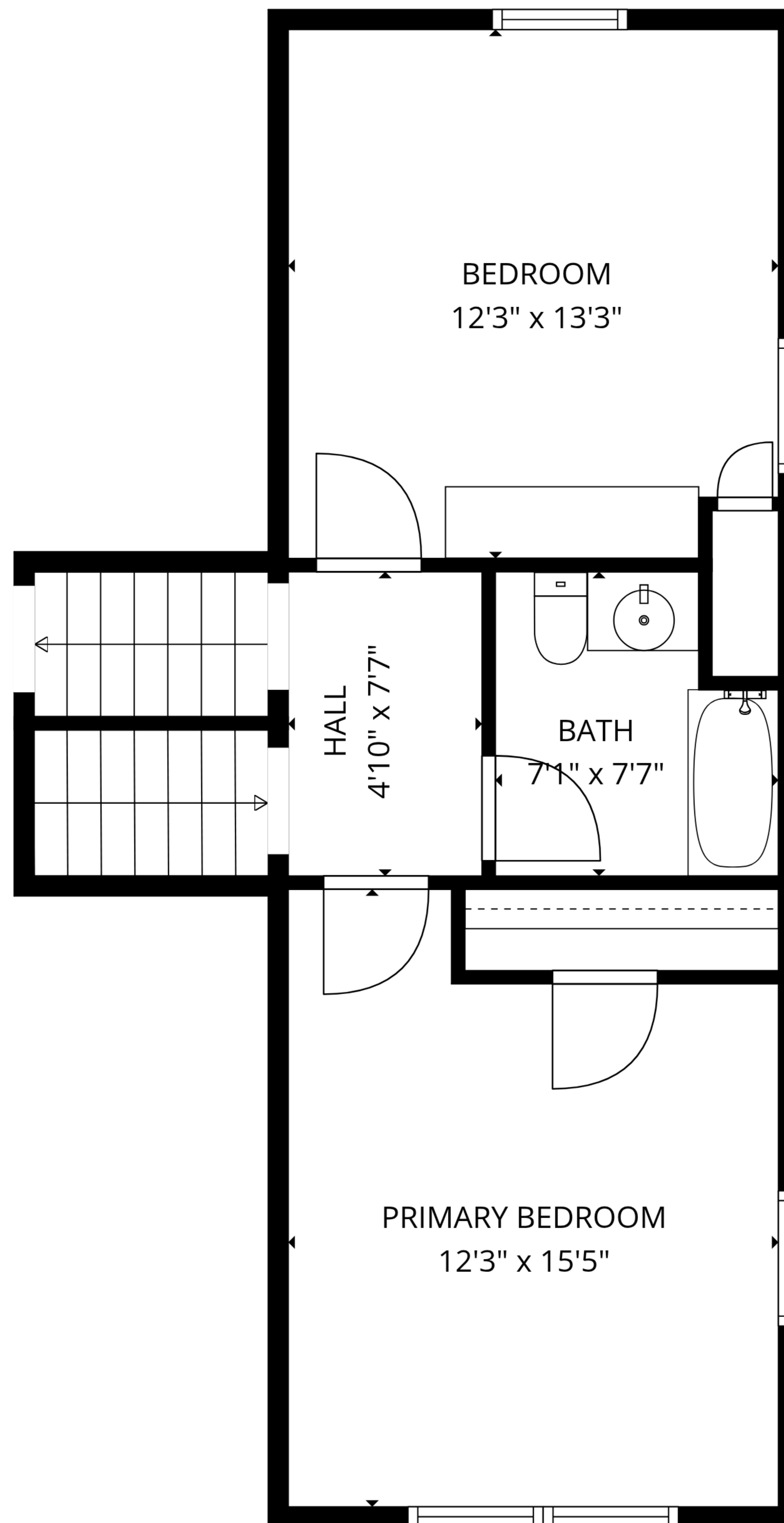
**TOTAL: 2617 sq. ft**

Basement: 0 sq. ft, 1st floor: 179 sq. ft, 2nd floor: 1109 sq. ft, 3rd floor: 501 sq. ft, 4th floor: 529 sq. ft, 5th floor: 299 sq. ft  
EXCLUDED AREAS: BASEMENT: 927 sq. ft, STORAGE: 137 sq. ft, ROOM: 161 sq. ft,  
GARAGE: 155 sq. ft, PORCH: 199 sq. ft, DECK: 486 sq. ft,  
LOW CEILING: 222 sq. ft, ATTIC: 53 sq. ft, WALLS: 396 sq. ft



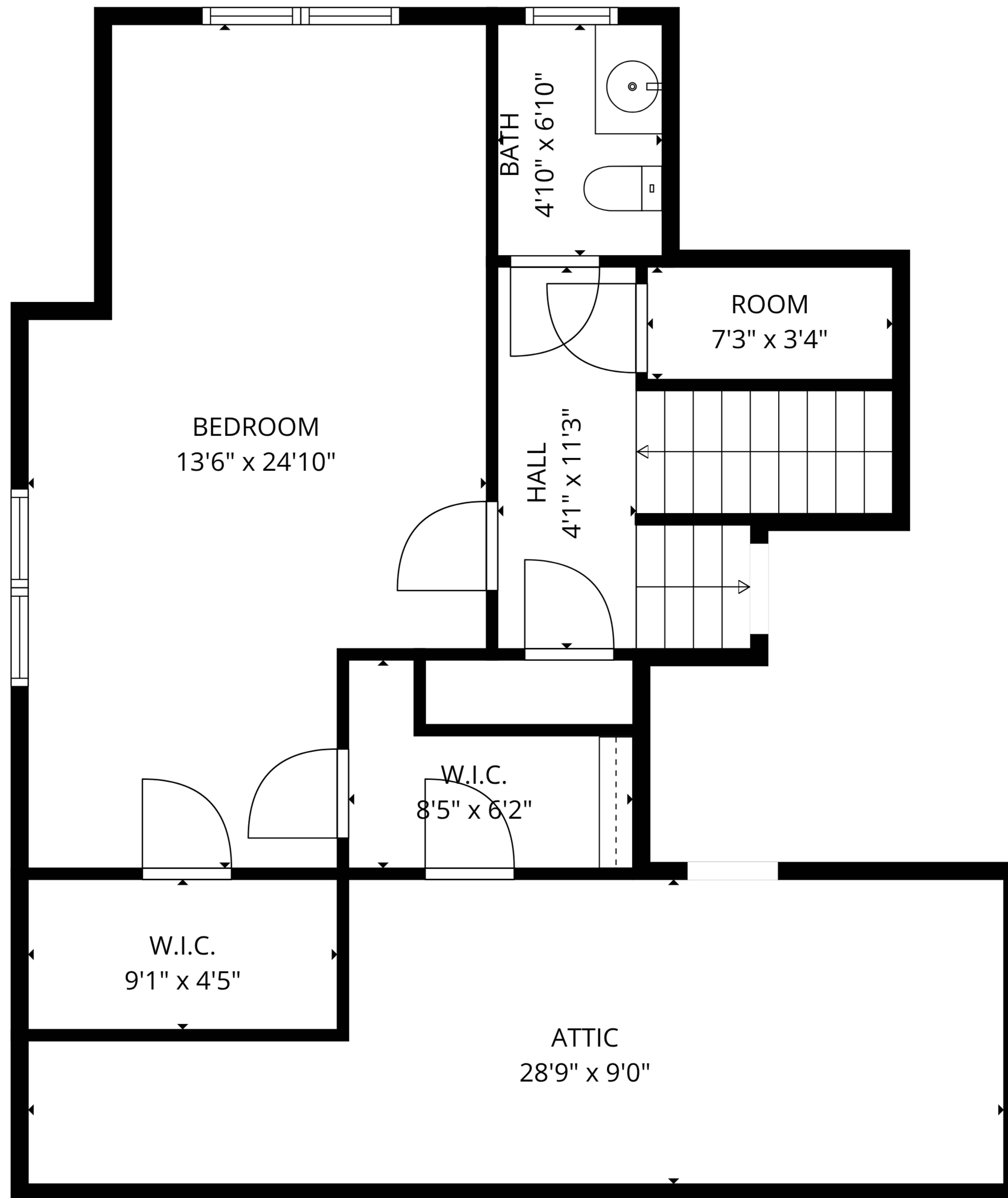
**TOTAL: 2617 sq. ft**

Basement: 0 sq. ft, 1st floor: 179 sq. ft, 2nd floor: 1109 sq. ft, 3rd floor: 501 sq. ft, 4th floor: 529 sq. ft, 5th floor: 299 sq. ft  
 EXCLUDED AREAS: BASEMENT: 927 sq. ft, STORAGE: 137 sq. ft, ROOM: 161 sq. ft,  
 GARAGE: 155 sq. ft, PORCH: 199 sq. ft, DECK: 486 sq. ft,  
 LOW CEILING: 222 sq. ft, ATTIC: 53 sq. ft, WALLS: 396 sq. ft



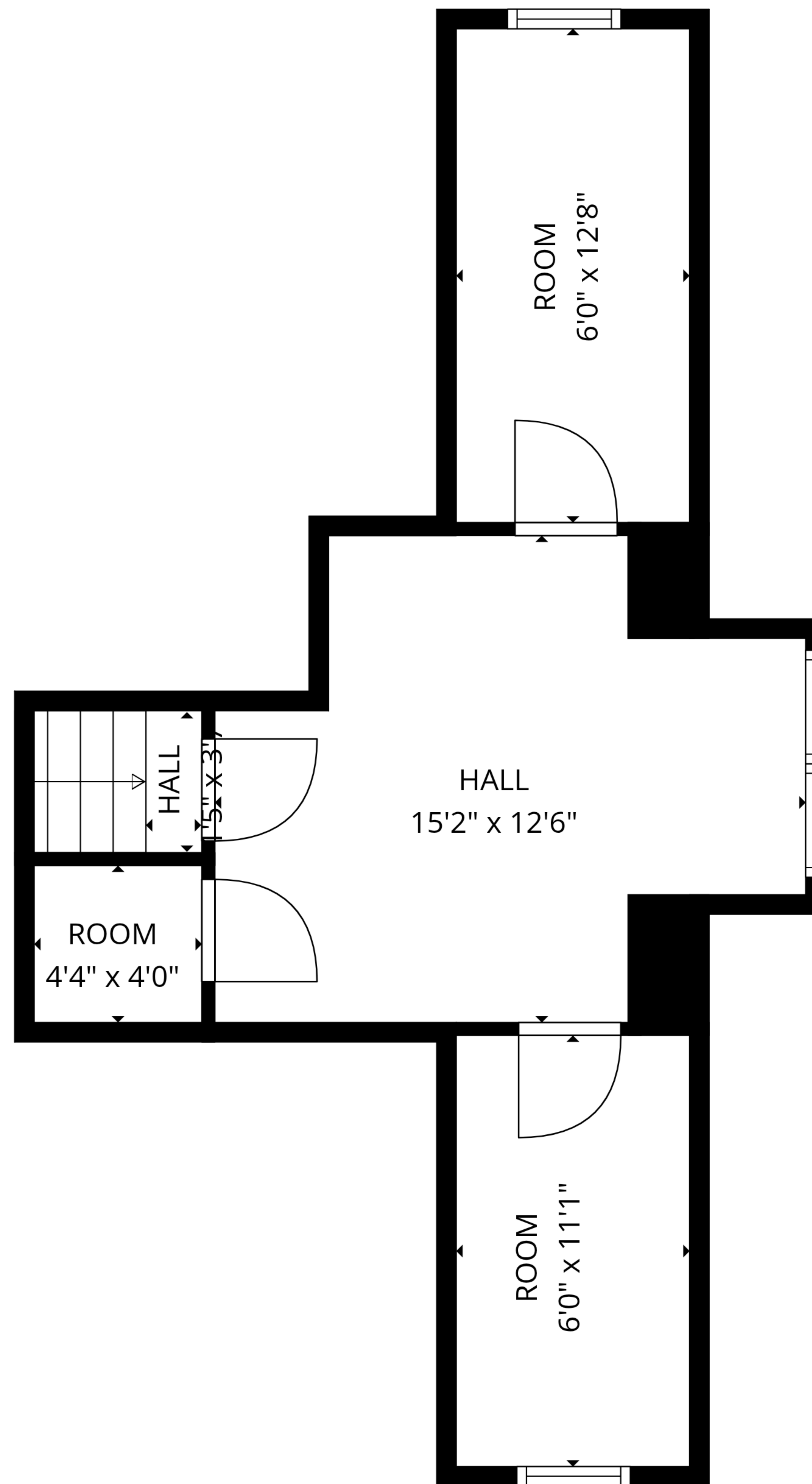
**TOTAL: 2617 sq. ft**

Basement: 0 sq. ft, 1st floor: 179 sq. ft, 2nd floor: 1109 sq. ft, 3rd floor: 501 sq. ft, 4th floor: 529 sq. ft, 5th floor: 299 sq. ft  
 EXCLUDED AREAS: BASEMENT: 927 sq. ft, STORAGE: 137 sq. ft, ROOM: 161 sq. ft,  
 GARAGE: 155 sq. ft, PORCH: 199 sq. ft, DECK: 486 sq. ft,  
 LOW CEILING: 222 sq. ft, ATTIC: 53 sq. ft, WALLS: 396 sq. ft



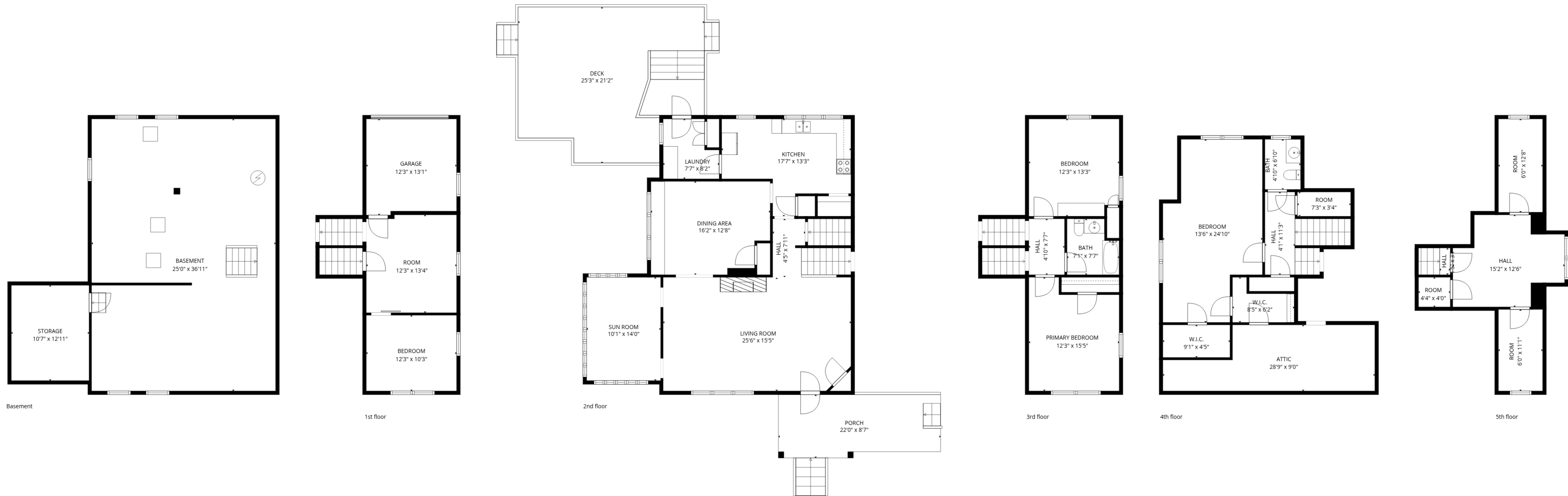
**TOTAL: 2617 sq. ft**

Basement: 0 sq. ft, 1st floor: 179 sq. ft, 2nd floor: 1109 sq. ft, 3rd floor: 501 sq. ft, 4th floor: 529 sq. ft, 5th floor: 299 sq. ft  
 EXCLUDED AREAS: BASEMENT: 927 sq. ft, STORAGE: 137 sq. ft, ROOM: 161 sq. ft,  
 GARAGE: 155 sq. ft, PORCH: 199 sq. ft, DECK: 486 sq. ft,  
 LOW CEILING: 222 sq. ft, ATTIC: 53 sq. ft, WALLS: 396 sq. ft



**TOTAL: 2617 sq. ft**

Basement: 0 sq. ft, 1st floor: 179 sq. ft, 2nd floor: 1109 sq. ft, 3rd floor: 501 sq. ft, 4th floor: 529 sq. ft, 5th floor: 299 sq. ft  
 EXCLUDED AREAS: BASEMENT: 927 sq. ft, STORAGE: 137 sq. ft, ROOM: 161 sq. ft,  
 GARAGE: 155 sq. ft, PORCH: 199 sq. ft, DECK: 486 sq. ft,  
 LOW CEILING: 222 sq. ft, ATTIC: 53 sq. ft, WALLS: 396 sq. ft



**TOTAL: 2617 sq. ft**

Basement: 0 sq. ft, 1st floor: 179 sq. ft, 2nd floor: 1109 sq. ft, 3rd floor: 501 sq. ft, 4th floor: 529 sq. ft, 5th floor: 299 sq. ft  
 EXCLUDED AREAS: BASEMENT: 927 sq. ft, STORAGE: 137 sq. ft, ROOM: 161 sq. ft,  
 GARAGE: 155 sq. ft, PORCH: 199 sq. ft, DECK: 486 sq. ft,  
 LOW CEILING: 222 sq. ft, ATTIC: 53 sq. ft, WALLS: 396 sq. ft