

# Home data report

## 2767 Oakwood Lane, St. Joseph, MI, US



**Total Area: 1658 sq. ft**

Basement: 567 sq. ft, 1st Floor: 1091 sq. ft

Excluded: Utility 265 sq. ft, Laundry 221 sq. ft, Undefined 19 sq. ft, Garage 530 sq. ft, Deck 618 sq. ft, Covered deck 121 sq. ft, Walls: 186 sq. ft

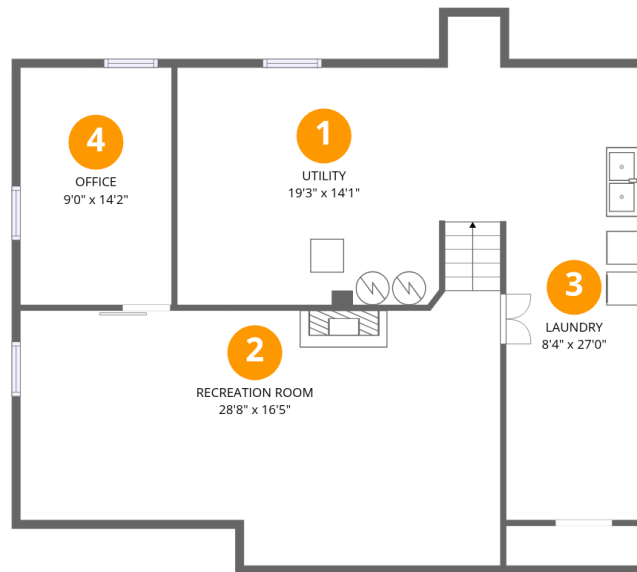
### Property summary

 **2** Floors

 **3** Bedrooms

 **1** Bathrooms

 **1** Garages



## Room dimensions

Floor 1 Below grade

Total: 567sqft

Excluded: 505sqft

#		Dimensions	sqft	Counted as living area
1	Utility	19'3" x 14'1"	265 sq. ft	No
2	Recreation Room	28'8" x 16'5"	418 sq. ft	Yes
3	Laundry	8'4" x 27'0"	218 sq. ft	No
4	Office	9'0" x 14'2"	128 sq. ft	Yes

# Home data report

## 2767 Oakwood Lane, St. Joseph, MI, US



### Room dimensions

Floor 2

Total: 1091 sqft

Excluded: 1269 sqft

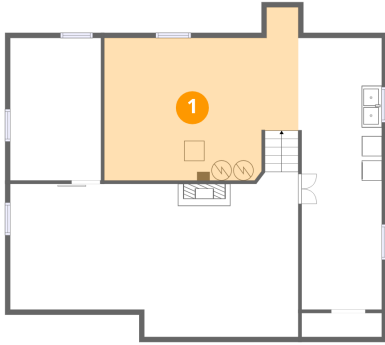
#		Dimensions	sqft	Counted as living area
5	Covered Deck	12'9" x 9'5"	121 sq. ft	No
6	Bedroom	10'0" x 10'10"	108 sq. ft	Yes
7	Deck	29'5" x 30'9"	618 sq. ft	No
8	Kitchen	12'4" x 14'2"	135 sq. ft	Yes
9	Bedroom	9'10" x 11'5"	112 sq. ft	Yes
10	Dining Area	9'1" x 8'4"	75 sq. ft	Yes
11	Garage	22'8" x 23'4"	530 sq. ft	No
12	Foyer	5'2" x 4'2"	21 sq. ft	Yes
13	Primary Bedroom	13'9" x 12'5"	172 sq. ft	Yes
14	Bath	5'4" x 7'10"	42 sq. ft	Yes
15	Living Room	15'4" x 16'11"	255 sq. ft	Yes

Home data report

2767 Oakwood Lane, St. Joseph, MI, US

#		Dimensions	sqft	Counted as living area
16	Hall	8'11" x 5'11"	36 sq. ft	Yes

## 1 Floor 1 - Utility



Dimensions: 19'3" x 14'1"  
Area: 265 sq. ft  
Counted as living area: No

Heated: Yes  
Finished: No  
Enclosed: Yes  
Contiguous: Yes  
Permitted: Yes  
Wet space: No  
Addition: No  
Conversion: No

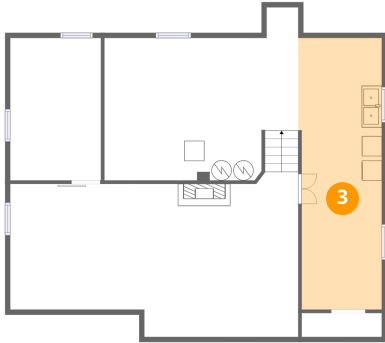
## 2 Floor 1 - Recreation Room



Dimensions: 28'8" x 16'5"  
Area: 418 sq. ft  
Counted as living area: No

Heated: Yes  
Finished: Yes  
Enclosed: Yes  
Contiguous: No  
Permitted: Yes  
Wet space: No  
Addition: No  
Conversion: No

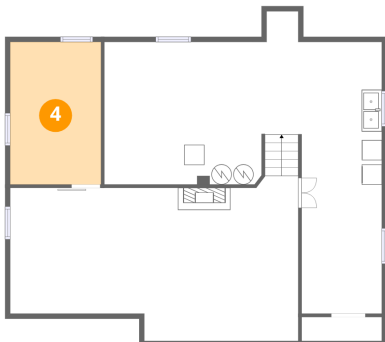
### 3 Floor 1 - Laundry



Dimensions: 8'4" x 27'0"  
Area: 218 sq. ft  
Counted as living area: No

Heated: Yes  
Finished: No  
Enclosed: Yes  
Contiguous: Yes  
Permitted: Yes  
Wet space: No  
Addition: No  
Conversion: No

### 4 Floor 1 - Office



Dimensions: 9'0" x 14'2"  
Area: 128 sq. ft  
Counted as living area: No

Heated: Yes  
Finished: Yes  
Enclosed: Yes  
Contiguous: No  
Permitted: Yes  
Wet space: No  
Addition: No  
Conversion: No

### 5 Floor 2 - Covered Deck



Dimensions: 12'9" x 9'5"  
Area: 121 sq. ft  
Counted as living area: No

Heated: No  
Finished: No  
Enclosed: No  
Contiguous: Yes  
Permitted: Yes  
Wet space: No  
Addition: No  
Conversion: No

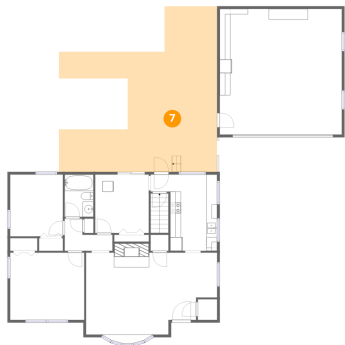
## 6 Floor 2 - Bedroom



Dimensions: 10'0" x 10'10"  
Area: 108 sq. ft  
Counted as living area: Yes

Heated: Yes  
Finished: Yes  
Enclosed: Yes  
Contiguous: Yes  
Permitted: Yes  
Wet space: No  
Addition: No  
Conversion: No

## 7 Floor 2 - Deck



Dimensions: 29'5" x 30'9"  
Area: 618 sq. ft  
Counted as living area: No

Heated: No  
Finished: No  
Enclosed: No  
Contiguous: Yes  
Permitted: Yes  
Wet space: No  
Addition: No  
Conversion: No

## 8 Floor 2 - Kitchen



Dimensions: 12'4" x 14'2"  
Area: 135 sq. ft  
Counted as living area: Yes

Heated: Yes  
Finished: Yes  
Enclosed: Yes  
Contiguous: Yes  
Permitted: Yes  
Wet space: No  
Addition: No  
Conversion: No

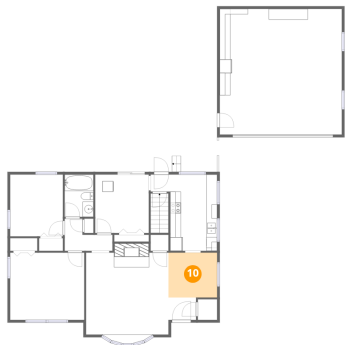
## 9 Floor 2 - Bedroom



Dimensions: 9'10" x 11'5"  
Area: 112 sq. ft  
Counted as living area: Yes

Heated: Yes  
Finished: Yes  
Enclosed: Yes  
Contiguous: Yes  
Permitted: Yes  
Wet space: No  
Addition: No  
Conversion: No

## 10 Floor 2 - Dining Area



Dimensions: 9'1" x 8'4"  
Area: 75 sq. ft  
Counted as living area: Yes

Heated: Yes  
Finished: Yes  
Enclosed: Yes  
Contiguous: Yes  
Permitted: Yes  
Wet space: No  
Addition: No  
Conversion: No

## 11 Floor 2 - Garage



Dimensions: 22'8" x 23'4"  
Area: 530 sq. ft  
Counted as living area: No

Heated: No  
Finished: No  
Enclosed: Yes  
Contiguous: Yes  
Permitted: Yes  
Wet space: No  
Addition: No  
Conversion: No

## 12 Floor 2 - Foyer



Dimensions: 5'2" x 4'2"  
Area: 21 sq. ft  
Counted as living area: Yes

Heated: Yes  
Finished: Yes  
Enclosed: Yes  
Contiguous: Yes  
Permitted: Yes  
Wet space: No  
Addition: No  
Conversion: No

## 13 Floor 2 - Primary Bedroom



Dimensions: 13'9" x 12'5"  
Area: 172 sq. ft  
Counted as living area: Yes

Heated: Yes  
Finished: Yes  
Enclosed: Yes  
Contiguous: Yes  
Permitted: Yes  
Wet space: No  
Addition: No  
Conversion: No

## 14 Floor 2 - Bath



Dimensions: 5'4" x 7'10"  
Area: 42 sq. ft  
Counted as living area: Yes

Heated: Yes  
Finished: Yes  
Enclosed: Yes  
Contiguous: Yes  
Permitted: Yes  
Wet space: Yes  
Addition: No  
Conversion: No

## 15 Floor 2 - Living Room

---



Dimensions: 15'4" x 16'11"  
Area: 255 sq. ft  
Counted as living area: Yes

Heated: Yes  
Finished: Yes  
Enclosed: Yes  
Contiguous: Yes  
Permitted: Yes  
Wet space: No  
Addition: No  
Conversion: No

## 16 Floor 2 - Hall

---



Dimensions: 8'11" x 5'11"  
Area: 36 sq. ft  
Counted as living area: Yes

Heated: Yes  
Finished: Yes  
Enclosed: Yes  
Contiguous: Yes  
Permitted: Yes  
Wet space: No  
Addition: No  
Conversion: No