

Home data report

8300 Riley Ridge Way Southeast, Owens Cross Roads, Madison County, Alabama, United States, 35763




Total Area: 3585 sq. ft

1st Floor: 3033 sq. ft, 2nd Floor: 552 sq. ft

Excluded: Garage 771 sq. ft

Property summary

 2 Floors

 5 Bedrooms

 4 Bathrooms

Home data report

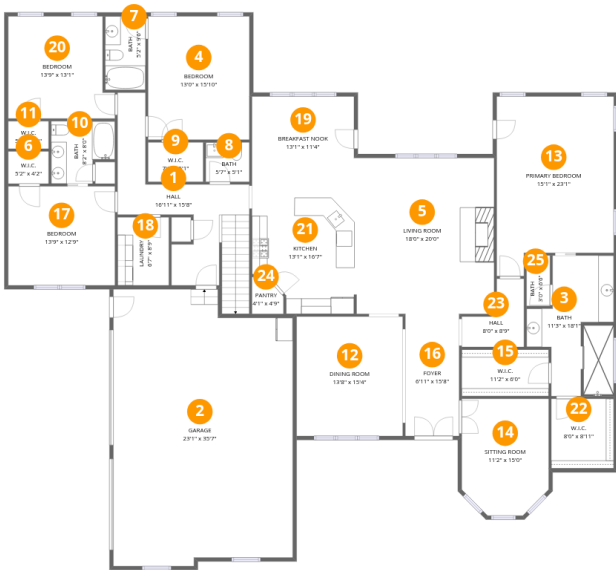
8300 Riley Ridge Way Southeast, Owens Cross Roads, Madison
County, Alabama, United States, 35763

 **1**
Half baths

 **1**
Garages

Home data report

8300 Riley Ridge Way Southeast, Owens Cross Roads, Madison County, Alabama, United States, 35763



Room dimensions

Floor 1

Total:3033sqft Excluded: 771sqft

#		Dimensions	sqft	Counted as living area
1	Hall	16'11" x 15'8"	199 sq. ft	Yes
2	Garage	23'1" x 35'7"	771 sq. ft	No
3	Bath	11'3" x 18'1"	156 sq. ft	Yes
4	Bedroom	13'0" x 15'10"	207 sq. ft	Yes
5	Living Room	18'0" x 20'0"	360 sq. ft	Yes
6	W.I.C.	5'2" x 4'2"	22 sq. ft	Yes
7	Bath	5'2" x 9'6"	49 sq. ft	Yes
8	Bath	5'7" x 5'1"	28 sq. ft	Yes
9	W.I.C.	7'1" x 5'1"	36 sq. ft	Yes
10	Bath	8'2" x 8'0"	57 sq. ft	Yes
11	W.I.C.	5'2" x 3'6"	18 sq. ft	Yes

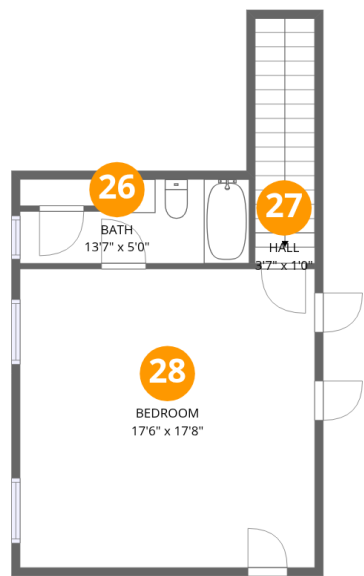
Home data report

8300 Riley Ridge Way Southeast, Owens Cross Roads, Madison County, Alabama, United States, 35763

#		Dimensions	sqft	Counted as living area
12	Dining Room	13'8" x 15'4"	209 sq. ft	Yes
13	Primary Bedroom	15'1" x 23'1"	313 sq. ft	Yes
14	Sitting Room	11'2" x 15'0"	157 sq. ft	Yes
15	W.I.C.	11'2" x 6'0"	67 sq. ft	Yes
16	Foyer	6'11" x 15'8"	108 sq. ft	Yes
17	Bedroom	13'9" x 12'9"	175 sq. ft	Yes
18	Laundry	6'7" x 8'9"	58 sq. ft	Yes
19	Breakfast Nook	13'1" x 11'4"	148 sq. ft	Yes
20	Bedroom	13'9" x 13'1"	165 sq. ft	Yes
21	Kitchen	13'1" x 16'7"	199 sq. ft	Yes
22	W.I.C.	8'0" x 8'11"	72 sq. ft	Yes
23	Hall	8'0" x 8'9"	48 sq. ft	Yes
24	Pantry	4'1" x 4'9"	17 sq. ft	Yes
25	Bath	3'0" x 6'6"	20 sq. ft	Yes

Home data report

8300 Riley Ridge Way Southeast, Owens Cross Roads, Madison County, Alabama, United States, 35763



Room dimensions

Floor 2 Total:552sqft Excluded: 0sqft

#		Dimensions	sqft	Counted as living area
26	Bath	13'7" x 5'0"	58 sq. ft	Yes
27	Hall	3'7" x 1'0"	51 sq. ft	Yes
28	Bedroom	17'6" x 17'8"	310 sq. ft	Yes

8300 Riley Ridge Way Southeast, Owens Cross Roads, Madison County, Alabama, United States, 35763

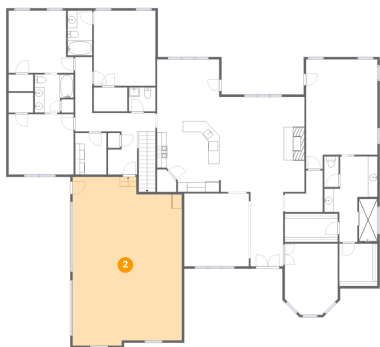
1 Floor 1 - Hall



Dimensions: 16'11" x 15'8"
Area: 199 sq. ft
Counted as living area: Yes

Heated: Yes
Finished: Yes
Enclosed: Yes
Contiguous: Yes
Permitted: Yes
Wet space: No
Addition: No
Conversion: No

2 Floor 1 - Garage

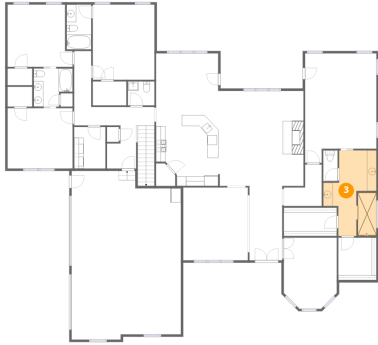


Dimensions: 23'1" x 35'7"
Area: 771 sq. ft
Counted as living area: No

Heated: No
Finished: No
Enclosed: Yes
Contiguous: Yes
Permitted: Yes
Wet space: No
Addition: No
Conversion: No

8300 Riley Ridge Way Southeast, Owens Cross Roads, Madison County, Alabama, United States, 35763

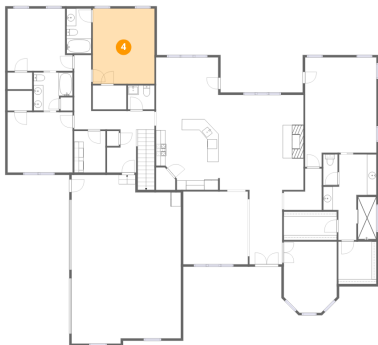
3 Floor 1 - Bath



Dimensions: 11'3" x 18'1"
Area: 156 sq. ft
Counted as living area: Yes

Heated: Yes
Finished: Yes
Enclosed: Yes
Contiguous: Yes
Permitted: Yes
Wet space: Yes
Addition: No
Conversion: No

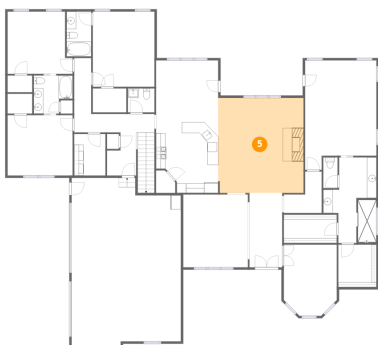
4 Floor 1 - Bedroom



Dimensions: 13'0" x 15'10"
Area: 207 sq. ft
Counted as living area: Yes

Heated: Yes
Finished: Yes
Enclosed: Yes
Contiguous: Yes
Permitted: Yes
Wet space: No
Addition: No
Conversion: No

5 Floor 1 - Living Room



Dimensions: 18'0" x 20'0"
Area: 360 sq. ft
Counted as living area: Yes

Heated: Yes
Finished: Yes
Enclosed: Yes
Contiguous: Yes
Permitted: Yes
Wet space: No
Addition: No
Conversion: No

6 Floor 1 - W.I.C.



Dimensions: 5'2" x 4'2"
Area: 22 sq. ft
Counted as living area: Yes

Heated: Yes
Finished: Yes
Enclosed: Yes
Contiguous: Yes
Permitted: Yes
Wet space: No
Addition: No
Conversion: No

7 Floor 1 - Bath



Dimensions: 5'2" x 9'6"
Area: 49 sq. ft
Counted as living area: Yes

Heated: Yes
Finished: Yes
Enclosed: Yes
Contiguous: Yes
Permitted: Yes
Wet space: Yes
Addition: No
Conversion: No

8 Floor 1 - Bath



Dimensions: 5'7" x 5'1"
Area: 28 sq. ft
Counted as living area: Yes

Heated: Yes
Finished: Yes
Enclosed: Yes
Contiguous: Yes
Permitted: Yes
Wet space: Yes
Addition: No
Conversion: No

8300 Riley Ridge Way Southeast, Owens Cross Roads, Madison County, Alabama, United States, 35763

9 Floor 1 - W.I.C.



Dimensions: 7'1" x 5'1"
Area: 36 sq. ft
Counted as living area: Yes

Heated: Yes
Finished: Yes
Enclosed: Yes
Contiguous: Yes
Permitted: Yes
Wet space: No
Addition: No
Conversion: No

10 Floor 1 - Bath



Dimensions: 8'2" x 8'0"
Area: 57 sq. ft
Counted as living area: Yes

Heated: Yes
Finished: Yes
Enclosed: Yes
Contiguous: Yes
Permitted: Yes
Wet space: Yes
Addition: No
Conversion: No

11 Floor 1 - W.I.C.

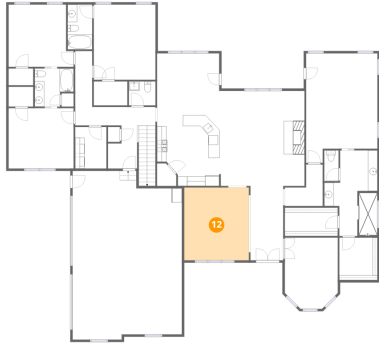


Dimensions: 5'2" x 3'6"
Area: 18 sq. ft
Counted as living area: Yes

Heated: Yes
Finished: Yes
Enclosed: Yes
Contiguous: Yes
Permitted: Yes
Wet space: No
Addition: No
Conversion: No

8300 Riley Ridge Way Southeast, Owens Cross Roads, Madison County, Alabama, United States, 35763

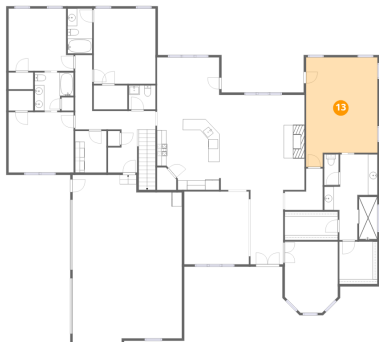
12 Floor 1 - Dining Room



Dimensions: 13'8" x 15'4"
Area: 209 sq. ft
Counted as living area: Yes

Heated: Yes
Finished: Yes
Enclosed: Yes
Contiguous: Yes
Permitted: Yes
Wet space: No
Addition: No
Conversion: No

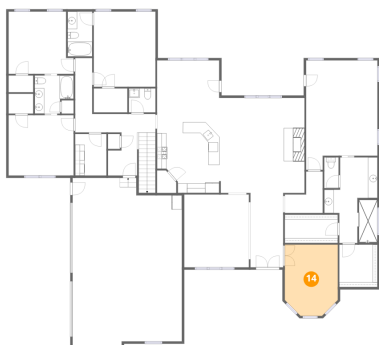
13 Floor 1 - Primary Bedroom



Dimensions: 15'1" x 23'1"
Area: 313 sq. ft
Counted as living area: Yes

Heated: Yes
Finished: Yes
Enclosed: Yes
Contiguous: Yes
Permitted: Yes
Wet space: No
Addition: No
Conversion: No

14 Floor 1 - Sitting Room

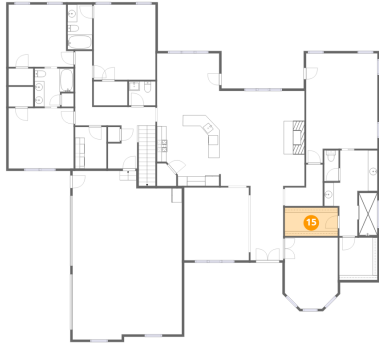


Dimensions: 11'2" x 15'0"
Area: 157 sq. ft
Counted as living area: Yes

Heated: Yes
Finished: Yes
Enclosed: Yes
Contiguous: Yes
Permitted: Yes
Wet space: No
Addition: No
Conversion: No

8300 Riley Ridge Way Southeast, Owens Cross Roads, Madison County, Alabama, United States, 35763

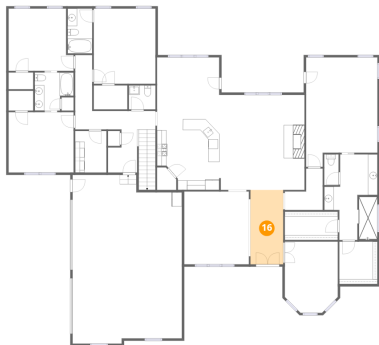
15 Floor 1 - W.I.C.



Dimensions: 11'2" x 6'0"
Area: 67 sq. ft
Counted as living area: Yes

Heated: Yes
Finished: Yes
Enclosed: Yes
Contiguous: Yes
Permitted: Yes
Wet space: No
Addition: No
Conversion: No

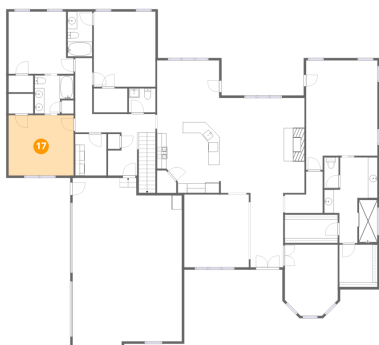
16 Floor 1 - Foyer



Dimensions: 6'11" x 15'8"
Area: 108 sq. ft
Counted as living area: Yes

Heated: Yes
Finished: Yes
Enclosed: Yes
Contiguous: Yes
Permitted: Yes
Wet space: No
Addition: No
Conversion: No

17 Floor 1 - Bedroom

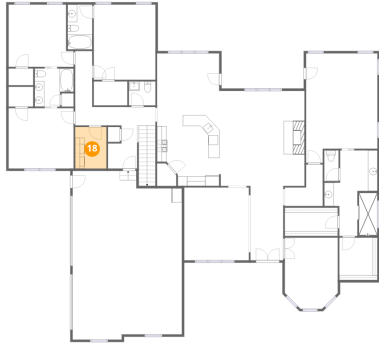


Dimensions: 13'9" x 12'9"
Area: 175 sq. ft
Counted as living area: Yes

Heated: Yes
Finished: Yes
Enclosed: Yes
Contiguous: Yes
Permitted: Yes
Wet space: No
Addition: No
Conversion: No

8300 Riley Ridge Way Southeast, Owens Cross Roads, Madison County, Alabama, United States, 35763

18 Floor 1 - Laundry



Dimensions: 6'7" x 8'9"
Area: 58 sq. ft
Counted as living area: Yes

Heated: Yes
Finished: Yes
Enclosed: Yes
Contiguous: Yes
Permitted: Yes
Wet space: No
Addition: No
Conversion: No

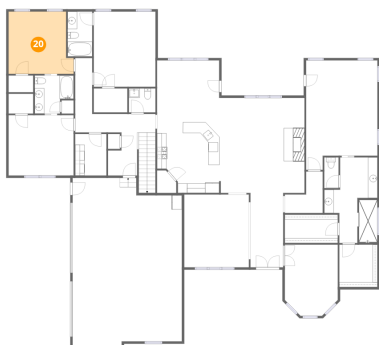
19 Floor 1 - Breakfast Nook



Dimensions: 13'1" x 11'4"
Area: 148 sq. ft
Counted as living area: Yes

Heated: Yes
Finished: Yes
Enclosed: Yes
Contiguous: Yes
Permitted: Yes
Wet space: No
Addition: No
Conversion: No

20 Floor 1 - Bedroom

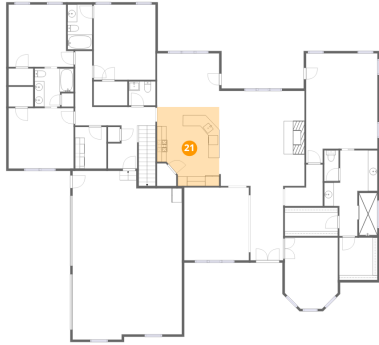


Dimensions: 13'9" x 13'1"
Area: 165 sq. ft
Counted as living area: Yes

Heated: Yes
Finished: Yes
Enclosed: Yes
Contiguous: Yes
Permitted: Yes
Wet space: No
Addition: No
Conversion: No

8300 Riley Ridge Way Southeast, Owens Cross Roads, Madison County, Alabama, United States, 35763

21 Floor 1 - Kitchen



Dimensions: 13'1" x 16'7"
Area: 199 sq. ft
Counted as living area: Yes

Heated: Yes
Finished: Yes
Enclosed: Yes
Contiguous: Yes
Permitted: Yes
Wet space: No
Addition: No
Conversion: No

22 Floor 1 - W.I.C.



Dimensions: 8'0" x 8'11"
Area: 72 sq. ft
Counted as living area: Yes

Heated: Yes
Finished: Yes
Enclosed: Yes
Contiguous: Yes
Permitted: Yes
Wet space: No
Addition: No
Conversion: No

23 Floor 1 - Hall

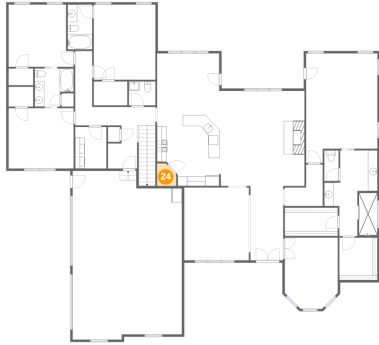


Dimensions: 8'0" x 8'9"
Area: 48 sq. ft
Counted as living area: Yes

Heated: Yes
Finished: Yes
Enclosed: Yes
Contiguous: Yes
Permitted: Yes
Wet space: No
Addition: No
Conversion: No

8300 Riley Ridge Way Southeast, Owens Cross Roads, Madison County, Alabama, United States, 35763

24 Floor 1 - Pantry



Dimensions: 4'1" x 4'9"
Area: 17 sq. ft
Counted as living area: Yes

Heated: Yes
Finished: Yes
Enclosed: Yes
Contiguous: Yes
Permitted: Yes
Wet space: No
Addition: No
Conversion: No

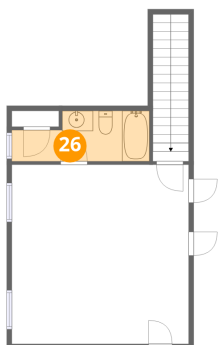
25 Floor 1 - Bath



Dimensions: 3'0" x 6'6"
Area: 20 sq. ft
Counted as living area: Yes

Heated: Yes
Finished: Yes
Enclosed: Yes
Contiguous: Yes
Permitted: Yes
Wet space: Yes
Addition: No
Conversion: No

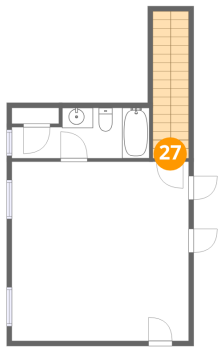
26 Floor 2 - Bath



Dimensions: 13'7" x 5'0"
Area: 58 sq. ft
Counted as living area: Yes

Heated: Yes
Finished: Yes
Enclosed: Yes
Contiguous: Yes
Permitted: Yes
Wet space: Yes
Addition: No
Conversion: No

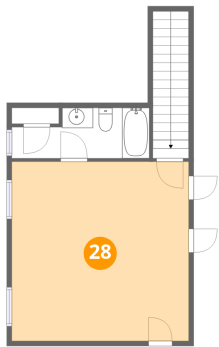
27 Floor 2 - Hall



Dimensions: 3'7" x 1'0"
Area: 51 sq. ft
Counted as living area: Yes

Heated: Yes
Finished: Yes
Enclosed: Yes
Contiguous: Yes
Permitted: Yes
Wet space: No
Addition: No
Conversion: No

28 Floor 2 - Bedroom



Dimensions: 17'6" x 17'8"
Area: 310 sq. ft
Counted as living area: Yes

Heated: Yes
Finished: Yes
Enclosed: Yes
Contiguous: Yes
Permitted: Yes
Wet space: No
Addition: No
Conversion: No