

Home data report

5633 Ferguson Drive Southeast, Homeland Hills, Roanoke,
Roanoke County, Virginia, United States, 24014



Total Area: 2411 sq. ft

1st Floor: 924 sq. ft, 2nd Floor: 1487 sq. ft

Excluded: Garage 528 sq. ft, Workshop 353 sq. ft, W.I.C. 35 sq. ft, Utility 107 sq. ft, Covered patio 192 sq. ft, Storage 65 sq. ft, Carport 571 sq. ft, Deck 159 sq. ft, Porch 168 sq. ft, Walls: 198 sq. ft

Property summary

 **2** Floors

 **3** Bedrooms

 **2** Bathrooms

Home data report

**5633 Ferguson Drive Southeast, Homeland Hills, Roanoke,
Roanoke County, Virginia, United States, 24014**



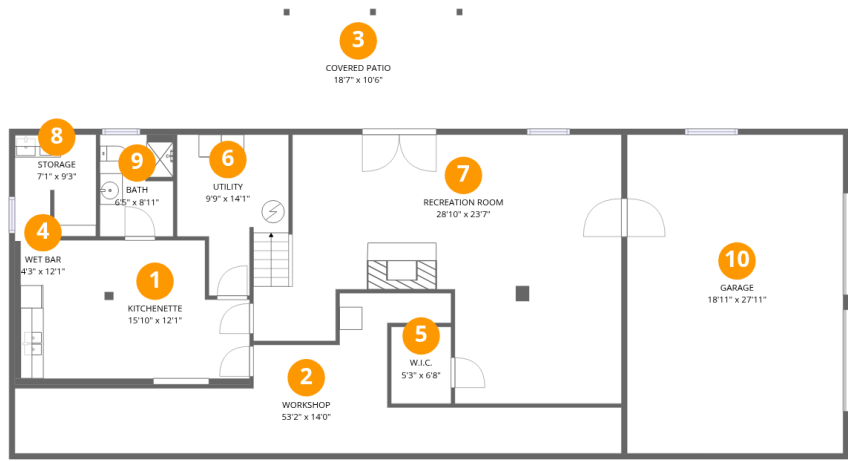
1
Half baths



1
Garages

Home data report

5633 Ferguson Drive Southeast, Homeland Hills, Roanoke,
Roanoke County, Virginia, United States, 24014



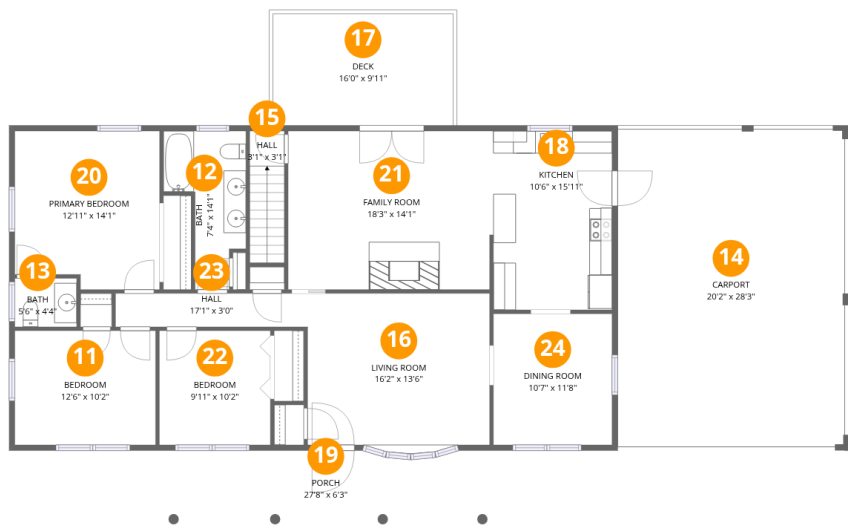
Room dimensions

Floor 1 Total:924sqft Excluded: 1280sqft

#		Dimensions	sqft	Counted as living area
1	Kitchenette	15'10" x 12'1"	179 sq. ft	Yes
2	Workshop	53'2" x 14'0"	347 sq. ft	No
3	Covered Patio	18'7" x 10'6"	192 sq. ft	No
4	Wet Bar	4'3" x 12'1"	60 sq. ft	Yes
5	W.I.C.	5'3" x 6'8"	35 sq. ft	No
6	Utility	9'9" x 14'1"	106 sq. ft	No
7	Recreation Room	28'10" x 23'7"	584 sq. ft	Yes
8	Storage	7'1" x 9'3"	63 sq. ft	No
9	Bath	6'5" x 8'11"	56 sq. ft	Yes
10	Garage	18'11" x 27'11"	528 sq. ft	No

Home data report

5633 Ferguson Drive Southeast, Homeland Hills, Roanoke,
Roanoke County, Virginia, United States, 24014



Room dimensions

Floor 2 Total:1487sqft Excluded: 898sqft

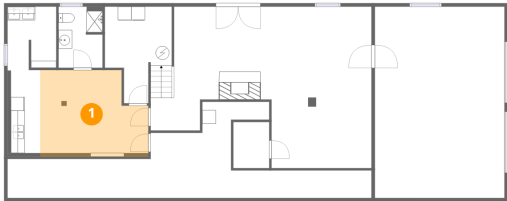
#		Dimensions	sqft	Counted as living area
11	Bedroom	12'6" x 10'2"	127 sq. ft	Yes
12	Bath	7'4" x 14'1"	74 sq. ft	Yes
13	Bath	5'6" x 4'4"	24 sq. ft	Yes
14	Carport	20'2" x 28'3"	571 sq. ft	No
15	Hall	3'1" x 3'1"	36 sq. ft	Yes
16	Living Room	16'2" x 13'6"	223 sq. ft	Yes
17	Deck	16'0" x 9'11"	159 sq. ft	No
18	Kitchen	10'6" x 15'11"	168 sq. ft	Yes
19	Porch	27'8" x 6'3"	168 sq. ft	No
20	Primary Bedroom	12'11" x 14'1"	174 sq. ft	Yes
21	Family Room	18'3" x 14'1"	256 sq. ft	Yes

Home data report

5633 Ferguson Drive Southeast, Homeland Hills, Roanoke,
Roanoke County, Virginia, United States, 24014

#		Dimensions	sqft	Counted as living area
22	Bedroom	9'11" x 10'2"	100 sq. ft	Yes
23	Hall	17'1" x 3'0"	51 sq. ft	Yes
24	Dining Room	10'7" x 11'8"	123 sq. ft	Yes

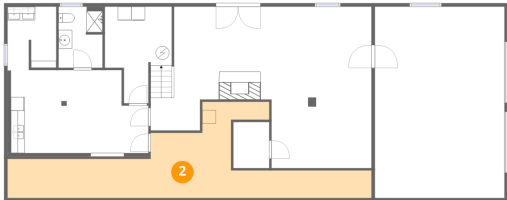
1 Floor 1 - Kitchenette



Dimensions: 15'10" x 12'1"
Area: 179 sq. ft
Counted as living area: Yes

Heated: Yes
Finished: Yes
Enclosed: Yes
Contiguous: Yes
Permitted: Yes
Wet space: No
Addition: No
Conversion: No

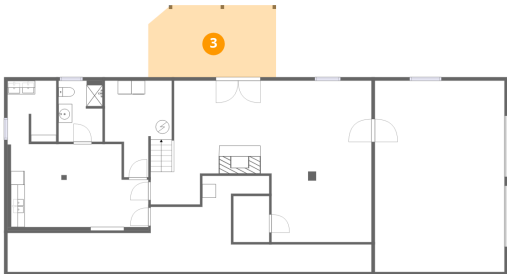
2 Floor 1 - Workshop



Dimensions: 53'2" x 14'0"
Area: 347 sq. ft
Counted as living area: No

Heated: No
Finished: No
Enclosed: Yes
Contiguous: No
Permitted: Yes
Wet space: No
Addition: No
Conversion: No

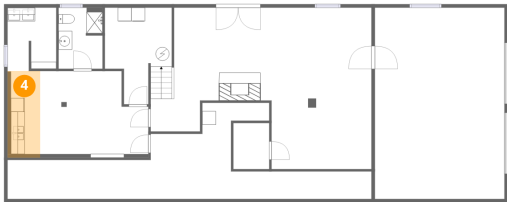
3 Floor 1 - Covered Patio



Dimensions: 18'7" x 10'6"
Area: 192 sq. ft
Counted as living area: No

Heated: No
Finished: No
Enclosed: No
Contiguous: Yes
Permitted: Yes
Wet space: No
Addition: No
Conversion: No

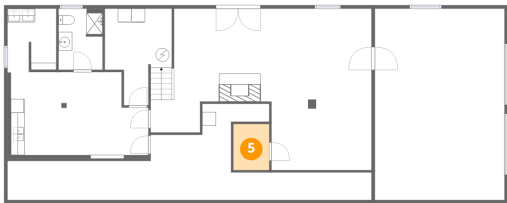
4 Floor 1 - Wet Bar



Dimensions: 4'3" x 12'1"
Area: 60 sq. ft
Counted as living area: Yes

Heated: Yes
Finished: Yes
Enclosed: Yes
Contiguous: Yes
Permitted: Yes
Wet space: No
Addition: No
Conversion: No

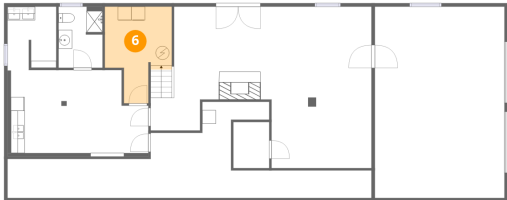
5 Floor 1 - W.I.C.



Dimensions: 5'3" x 6'8"
Area: 35 sq. ft
Counted as living area: No

Heated: Yes
Finished: No
Enclosed: Yes
Contiguous: Yes
Permitted: Yes
Wet space: No
Addition: No
Conversion: No

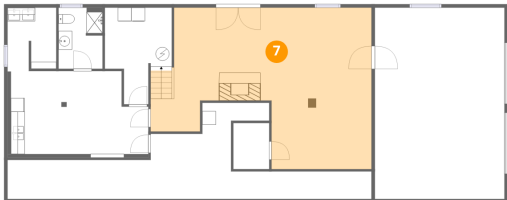
6 Floor 1 - Utility



Dimensions: 9'9" x 14'1"
Area: 106 sq. ft
Counted as living area: No

Heated: Yes
Finished: No
Enclosed: Yes
Contiguous: Yes
Permitted: Yes
Wet space: No
Addition: No
Conversion: No

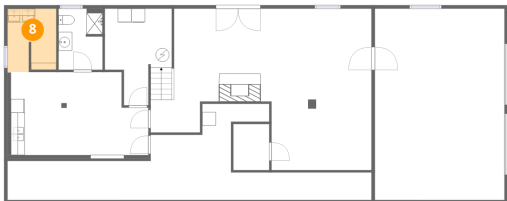
7 Floor 1 - Recreation Room



Dimensions: 28'10" x 23'7"
Area: 584 sq. ft
Counted as living area: Yes

Heated: Yes
Finished: Yes
Enclosed: Yes
Contiguous: Yes
Permitted: Yes
Wet space: No
Addition: No
Conversion: No

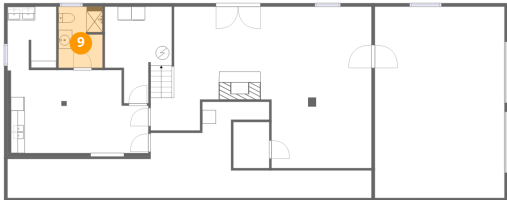
8 Floor 1 - Storage



Dimensions: 7'1" x 9'3"
Area: 63 sq. ft
Counted as living area: No

Heated: No
Finished: No
Enclosed: No
Contiguous: No
Permitted: Yes
Wet space: No
Addition: No
Conversion: No

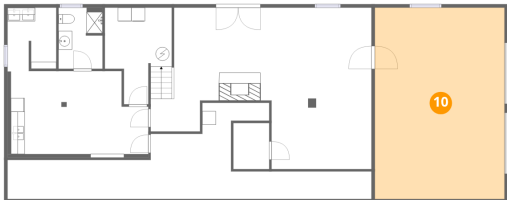
9 Floor 1 - Bath



Dimensions: 6'5" x 8'11"
Area: 56 sq. ft
Counted as living area: Yes

Heated: Yes
Finished: Yes
Enclosed: Yes
Contiguous: Yes
Permitted: Yes
Wet space: Yes
Addition: No
Conversion: No

10 Floor 1 - Garage



Dimensions: 18'11" x 27'11"
Area: 528 sq. ft
Counted as living area: No

Heated: No
Finished: No
Enclosed: Yes
Contiguous: Yes
Permitted: Yes
Wet space: No
Addition: No
Conversion: No

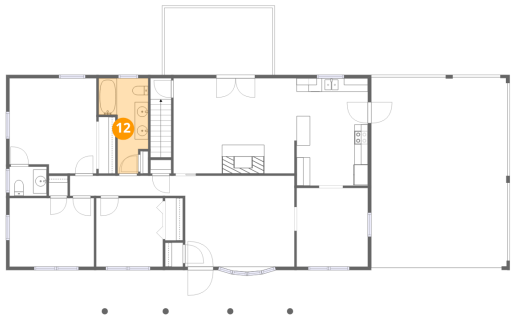
11 Floor 2 - Bedroom



Dimensions: 12'6" x 10'2"
Area: 127 sq. ft
Counted as living area: Yes

Heated: Yes
Finished: Yes
Enclosed: Yes
Contiguous: Yes
Permitted: Yes
Wet space: No
Addition: No
Conversion: No

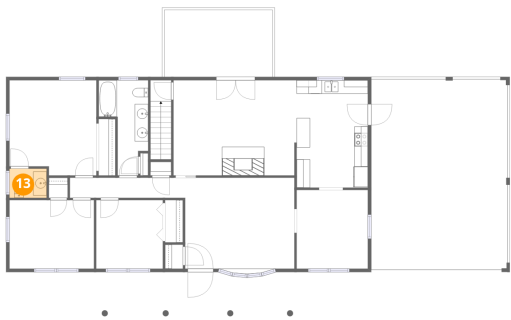
12 Floor 2 - Bath



Dimensions: 7'4" x 14'1"
Area: 74 sq. ft
Counted as living area: Yes

Heated: Yes
Finished: Yes
Enclosed: Yes
Contiguous: Yes
Permitted: Yes
Wet space: Yes
Addition: No
Conversion: No

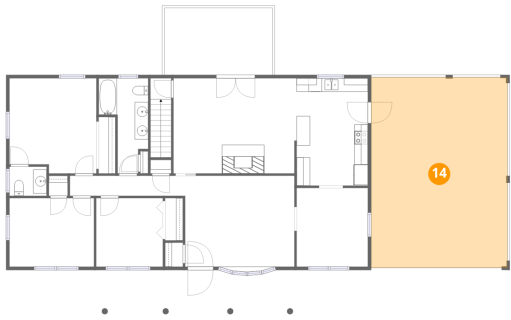
13 Floor 2 - Bath



Dimensions: 5'6" x 4'4"
Area: 24 sq. ft
Counted as living area: Yes

Heated: Yes
Finished: Yes
Enclosed: Yes
Contiguous: Yes
Permitted: Yes
Wet space: Yes
Addition: No
Conversion: No

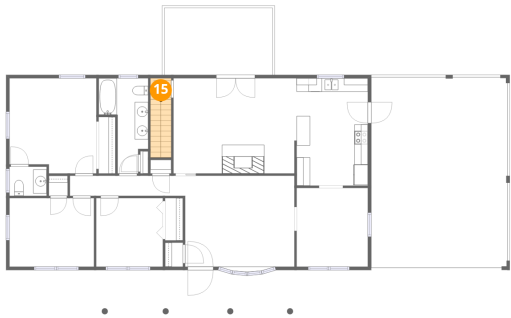
14 Floor 2 - Carport



Dimensions: 20'2" x 28'3"
Area: 571 sq. ft
Counted as living area: No

Heated: No
Finished: Yes
Enclosed: No
Contiguous: Yes
Permitted: Yes
Wet space: No
Addition: No
Conversion: No

15 Floor 2 - Hall



Dimensions: 3'1" x 3'1"
Area: 36 sq. ft
Counted as living area: Yes

Heated: Yes
Finished: Yes
Enclosed: Yes
Contiguous: Yes
Permitted: Yes
Wet space: No
Addition: No
Conversion: No

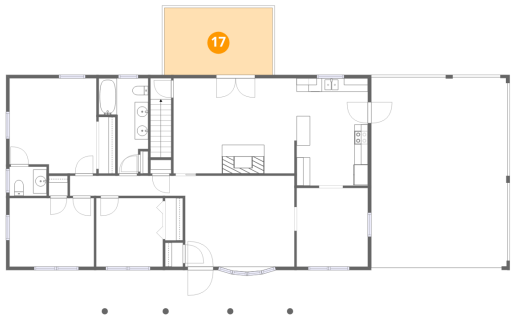
16 Floor 2 - Living Room



Dimensions: 16'2" x 13'6"
Area: 223 sq. ft
Counted as living area: Yes

Heated: Yes
Finished: Yes
Enclosed: Yes
Contiguous: Yes
Permitted: Yes
Wet space: No
Addition: No
Conversion: No

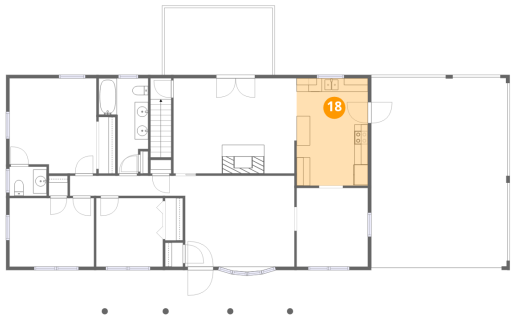
17 Floor 2 - Deck



Dimensions: 16'0" x 9'11"
Area: 159 sq. ft
Counted as living area: No

Heated: No
Finished: No
Enclosed: No
Contiguous: No
Permitted: Yes
Wet space: No
Addition: No
Conversion: No

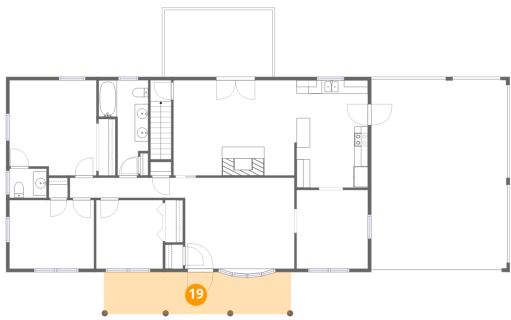
18 Floor 2 - Kitchen



Dimensions: 10'6" x 15'11"
Area: 168 sq. ft
Counted as living area: Yes

Heated: Yes
Finished: Yes
Enclosed: Yes
Contiguous: Yes
Permitted: Yes
Wet space: No
Addition: No
Conversion: No

19 Floor 2 - Porch



Dimensions: 27'8" x 6'3"
Area: 168 sq. ft
Counted as living area: No

Heated: No
Finished: No
Enclosed: No
Contiguous: Yes
Permitted: Yes
Wet space: No
Addition: No
Conversion: No

20 Floor 2 - Primary Bedroom



Dimensions: 12'11" x 14'1"
Area: 174 sq. ft
Counted as living area: Yes

Heated: Yes
Finished: Yes
Enclosed: Yes
Contiguous: Yes
Permitted: Yes
Wet space: No
Addition: No
Conversion: No

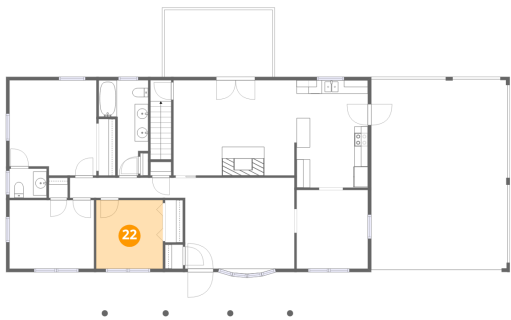
21 Floor 2 - Family Room



Dimensions: 18'3" x 14'1"
Area: 256 sq. ft
Counted as living area: Yes

Heated: Yes
Finished: Yes
Enclosed: Yes
Contiguous: Yes
Permitted: Yes
Wet space: No
Addition: No
Conversion: No

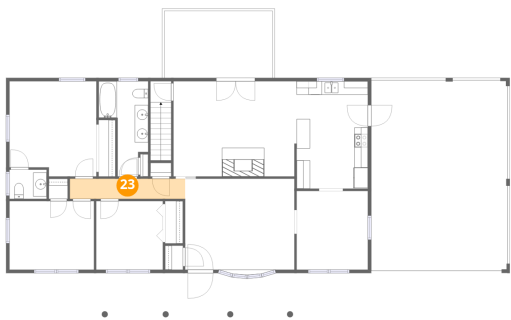
22 Floor 2 - Bedroom



Dimensions: 9'11" x 10'2"
Area: 100 sq. ft
Counted as living area: Yes

Heated: Yes
Finished: Yes
Enclosed: Yes
Contiguous: Yes
Permitted: Yes
Wet space: No
Addition: No
Conversion: No

23 Floor 2 - Hall



Dimensions: 17'1" x 3'0"
Area: 51 sq. ft
Counted as living area: Yes

Heated: Yes
Finished: Yes
Enclosed: Yes
Contiguous: Yes
Permitted: Yes
Wet space: No
Addition: No
Conversion: No

24 Floor 2 - Dining Room



Dimensions: 10'7" x 11'8"
Area: 123 sq. ft
Counted as living area: Yes

Heated: Yes
Finished: Yes
Enclosed: Yes
Contiguous: Yes
Permitted: Yes
Wet space: No
Addition: No
Conversion: No