

# Home data report

## 218 2nd Ave, Superior, CO, US



**Total Area: 2851 sq. ft**

1st Floor: 1510 sq. ft, 2nd Floor: 1341 sq. ft

Excluded: Garage 558 sq. ft, Covered patio 243 sq. ft, Fireplace 11 sq. ft, Walls: 216 sq. ft

## Property summary



Home data report

**218 2nd Ave, Superior, CO, US**

 **1**  
Half baths

 **1**  
Garages

# Home data report

## 218 2nd Ave, Superior, CO, US



### Room dimensions

Floor 1

Total: 1510 sqft

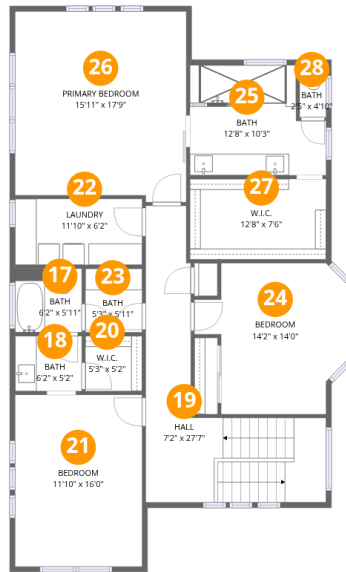
Excluded: 812 sqft

#		Dimensions	sqft	Counted as living area
1	Hall	7'10" x 5'1"	40 sq. ft	Yes
2	Dining Room	13'8" x 15'1"	206 sq. ft	Yes
3	Covered Patio	20'9" x 10'10"	226 sq. ft	No
4	Living Room	13'10" x 17'0"	235 sq. ft	Yes
5	Bath	5'5" x 8'6"	46 sq. ft	Yes
6	Hall	5'10" x 15'4"	89 sq. ft	Yes
7	Hall	9'4" x 14'7"	137 sq. ft	Yes
8	Foyer	7'6" x 9'0"	67 sq. ft	Yes
9	Bedroom	10'8" x 14'7"	156 sq. ft	Yes
10	Pantry	5'1" x 6'3"	31 sq. ft	Yes
11	Kitchen	15'1" x 19'1"	288 sq. ft	Yes

Home data report

**218 2nd Ave, Superior, CO, US**

#		Dimensions	sqft	Counted as living area
12	Entry	7'6" x 8'5"	63 sq. ft	Yes
13	Bath	5'0" x 4'10"	24 sq. ft	Yes
14	Breakfast Nook	12'7" x 8'9"	110 sq. ft	Yes
15	Yard	19'8" x 12'3"	240 sq. ft	No
16	Garage	24'7" x 22'9"	558 sq. ft	No



## Room dimensions

Floor 2

Total: 1341 sqft

Excluded: 0 sqft

#		Dimensions	sqft	Counted as living area
17	Bath	6'2" x 5'11"	36 sq. ft	Yes
18	Bath	6'2" x 5'2"	32 sq. ft	Yes
19	Hall	7'2" x 27'7"	198 sq. ft	Yes
20	W.I.C.	5'3" x 5'2"	27 sq. ft	Yes
21	Bedroom	11'10" x 16'0"	188 sq. ft	Yes
22	Laundry	11'10" x 6'2"	72 sq. ft	Yes
23	Bath	5'3" x 5'11"	31 sq. ft	Yes
24	Bedroom	14'2" x 14'0"	199 sq. ft	Yes
25	Bath	12'8" x 10'3"	130 sq. ft	Yes
26	Primary Bedroom	15'11" x 17'9"	282 sq. ft	Yes
27	W.I.C.	12'8" x 7'6"	95 sq. ft	Yes

Home data report

**218 2nd Ave, Superior, CO, US**

#		Dimensions	sqft	Counted as living area
28	Bath	2'5" x 4'10"	12 sq. ft	Yes

## 1 Floor 1 - Hall

---



Dimensions: 7'10" x 5'1"  
Area: 40 sq. ft  
Counted as living area: Yes

Heated: Yes  
Finished: Yes  
Enclosed: Yes  
Contiguous: Yes  
Permitted: Yes  
Wet space: No  
Addition: No  
Conversion: No

## 2 Floor 1 - Dining Room

---



Dimensions: 13'8" x 15'1"  
Area: 206 sq. ft  
Counted as living area: Yes

Heated: Yes  
Finished: Yes  
Enclosed: Yes  
Contiguous: Yes  
Permitted: Yes  
Wet space: No  
Addition: No  
Conversion: No

### 3 Floor 1 - Covered Patio



Dimensions: 20'9" x 10'10"  
Area: 226 sq. ft  
Counted as living area: No

Heated: No  
Finished: No  
Enclosed: No  
Contiguous: Yes  
Permitted: Yes  
Wet space: No  
Addition: No  
Conversion: No

### 4 Floor 1 - Living Room



Dimensions: 13'10" x 17'0"  
Area: 235 sq. ft  
Counted as living area: Yes

Heated: Yes  
Finished: Yes  
Enclosed: Yes  
Contiguous: Yes  
Permitted: Yes  
Wet space: No  
Addition: No  
Conversion: No

### 5 Floor 1 - Bath



Dimensions: 5'5" x 8'6"  
Area: 46 sq. ft  
Counted as living area: Yes

Heated: Yes  
Finished: Yes  
Enclosed: Yes  
Contiguous: Yes  
Permitted: Yes  
Wet space: Yes  
Addition: No  
Conversion: No

### 6 Floor 1 - Hall

---



Dimensions: 5'10" x 15'4"  
Area: 89 sq. ft  
Counted as living area: No

Heated: Yes  
Finished: Yes  
Enclosed: Yes  
Contiguous: No  
Permitted: Yes  
Wet space: No  
Addition: No  
Conversion: No

### 7 Floor 1 - Hall

---



Dimensions: 9'4" x 14'7"  
Area: 137 sq. ft  
Counted as living area: Yes

Heated: Yes  
Finished: Yes  
Enclosed: Yes  
Contiguous: Yes  
Permitted: Yes  
Wet space: No  
Addition: No  
Conversion: No

### 8 Floor 1 - Foyer

---



Dimensions: 7'6" x 9'0"  
Area: 67 sq. ft  
Counted as living area: Yes

Heated: Yes  
Finished: Yes  
Enclosed: Yes  
Contiguous: Yes  
Permitted: Yes  
Wet space: No  
Addition: No  
Conversion: No

### 9 Floor 1 - Bedroom

---



Dimensions: 10'8" x 14'7"  
Area: 156 sq. ft  
Counted as living area: Yes

Heated: Yes  
Finished: Yes  
Enclosed: Yes  
Contiguous: Yes  
Permitted: Yes  
Wet space: No  
Addition: No  
Conversion: No

### 10 Floor 1 - Pantry

---



Dimensions: 5'1" x 6'3"  
Area: 31 sq. ft  
Counted as living area: Yes

Heated: Yes  
Finished: Yes  
Enclosed: Yes  
Contiguous: Yes  
Permitted: Yes  
Wet space: No  
Addition: No  
Conversion: No

### 11 Floor 1 - Kitchen

---



Dimensions: 15'1" x 19'1"  
Area: 288 sq. ft  
Counted as living area: Yes

Heated: Yes  
Finished: Yes  
Enclosed: Yes  
Contiguous: Yes  
Permitted: Yes  
Wet space: No  
Addition: No  
Conversion: No

## 12 Floor 1 - Entry



Dimensions: 7'6" x 8'5"  
Area: 63 sq. ft  
Counted as living area: Yes

Heated: Yes  
Finished: Yes  
Enclosed: Yes  
Contiguous: Yes  
Permitted: Yes  
Wet space: No  
Addition: No  
Conversion: No

## 13 Floor 1 - Bath



Dimensions: 5'0" x 4'10"  
Area: 24 sq. ft  
Counted as living area: Yes

Heated: Yes  
Finished: Yes  
Enclosed: Yes  
Contiguous: Yes  
Permitted: Yes  
Wet space: Yes  
Addition: No  
Conversion: No

## 14 Floor 1 - Breakfast Nook



Dimensions: 12'7" x 8'9"  
Area: 110 sq. ft  
Counted as living area: Yes

Heated: Yes  
Finished: Yes  
Enclosed: Yes  
Contiguous: Yes  
Permitted: Yes  
Wet space: No  
Addition: No  
Conversion: No

**15** Floor 1 - Yard



Dimensions: 19'8" x 12'3"  
Area: 240 sq. ft  
Counted as living area: No

Heated: No  
Finished: No  
Enclosed: No  
Contiguous: Yes  
Permitted: No  
Wet space: No  
Addition: No  
Conversion: No

**16** Floor 1 - Garage



Dimensions: 24'7" x 22'9"  
Area: 558 sq. ft  
Counted as living area: No

Heated: No  
Finished: No  
Enclosed: Yes  
Contiguous: Yes  
Permitted: Yes  
Wet space: No  
Addition: No  
Conversion: No

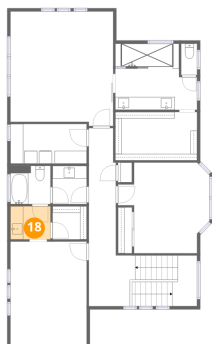
**17** Floor 2 - Bath



Dimensions: 6'2" x 5'11"  
Area: 36 sq. ft  
Counted as living area: Yes

Heated: Yes  
Finished: Yes  
Enclosed: Yes  
Contiguous: Yes  
Permitted: Yes  
Wet space: Yes  
Addition: No  
Conversion: No

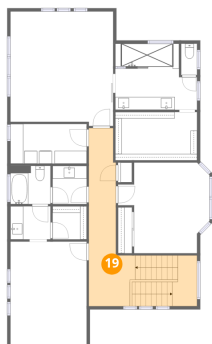
**18** Floor 2 - Bath



Dimensions: 6'2" x 5'2"  
Area: 32 sq. ft  
Counted as living area: Yes

Heated: Yes  
Finished: Yes  
Enclosed: Yes  
Contiguous: Yes  
Permitted: Yes  
Wet space: Yes  
Addition: No  
Conversion: No

**19** Floor 2 - Hall



Dimensions: 7'2" x 27'7"  
Area: 198 sq. ft  
Counted as living area: Yes

Heated: Yes  
Finished: Yes  
Enclosed: Yes  
Contiguous: Yes  
Permitted: Yes  
Wet space: No  
Addition: No  
Conversion: No

**20** Floor 2 - W.I.C.



Dimensions: 5'3" x 5'2"  
Area: 27 sq. ft  
Counted as living area: Yes

Heated: Yes  
Finished: Yes  
Enclosed: Yes  
Contiguous: Yes  
Permitted: Yes  
Wet space: No  
Addition: No  
Conversion: No

## 21 Floor 2 - Bedroom



Dimensions: 11'10" x 16'0"  
Area: 188 sq. ft  
Counted as living area: Yes

Heated: Yes  
Finished: Yes  
Enclosed: Yes  
Contiguous: Yes  
Permitted: Yes  
Wet space: No  
Addition: No  
Conversion: No

## 22 Floor 2 - Laundry



Dimensions: 11'10" x 6'2"  
Area: 72 sq. ft  
Counted as living area: Yes

Heated: Yes  
Finished: Yes  
Enclosed: Yes  
Contiguous: Yes  
Permitted: Yes  
Wet space: No  
Addition: No  
Conversion: No

## 23 Floor 2 - Bath



Dimensions: 5'3" x 5'11"  
Area: 31 sq. ft  
Counted as living area: Yes

Heated: Yes  
Finished: Yes  
Enclosed: Yes  
Contiguous: Yes  
Permitted: Yes  
Wet space: Yes  
Addition: No  
Conversion: No

## 24 Floor 2 - Bedroom



Dimensions: 14'2" x 14'0"  
Area: 199 sq. ft  
Counted as living area: Yes

Heated: Yes  
Finished: Yes  
Enclosed: Yes  
Contiguous: Yes  
Permitted: Yes  
Wet space: No  
Addition: No  
Conversion: No

## 25 Floor 2 - Bath



Dimensions: 12'8" x 10'3"  
Area: 130 sq. ft  
Counted as living area: Yes

Heated: Yes  
Finished: Yes  
Enclosed: Yes  
Contiguous: Yes  
Permitted: Yes  
Wet space: Yes  
Addition: No  
Conversion: No

## 26 Floor 2 - Primary Bedroom



Dimensions: 15'11" x 17'9"  
Area: 282 sq. ft  
Counted as living area: Yes

Heated: Yes  
Finished: Yes  
Enclosed: Yes  
Contiguous: Yes  
Permitted: Yes  
Wet space: No  
Addition: No  
Conversion: No

**27** Floor 2 - W.I.C.

---



Dimensions: 12'8" x 7'6"  
Area: 95 sq. ft  
Counted as living area: Yes

Heated: Yes  
Finished: Yes  
Enclosed: Yes  
Contiguous: Yes  
Permitted: Yes  
Wet space: No  
Addition: No  
Conversion: No

**28** Floor 2 - Bath

---



Dimensions: 2'5" x 4'10"  
Area: 12 sq. ft  
Counted as living area: Yes

Heated: Yes  
Finished: Yes  
Enclosed: Yes  
Contiguous: Yes  
Permitted: Yes  
Wet space: Yes  
Addition: No  
Conversion: No