

Home data report

5717 Fieldview Drive, Roanoke, Roanoke County, Virginia, United States, 24019



**Total Area: 2655 sq. ft**

Basement 1: 772 sq. ft, 1st Floor: 980 sq. ft, 2nd Floor: 903 sq. ft

Excluded: Patio 738 sq. ft, Utility 121 sq. ft, Garage 420 sq. ft, Deck 245 sq. ft, Porch 102 sq. ft, Fireplace 8 sq. ft, Walls: 228 sq. ft

Property summary

 **3** Floors

 **4** Bedrooms

 **3** Bathrooms

Home data report

**5717 Fieldview Drive, Roanoke, Roanoke County, Virginia, United States, 24019**



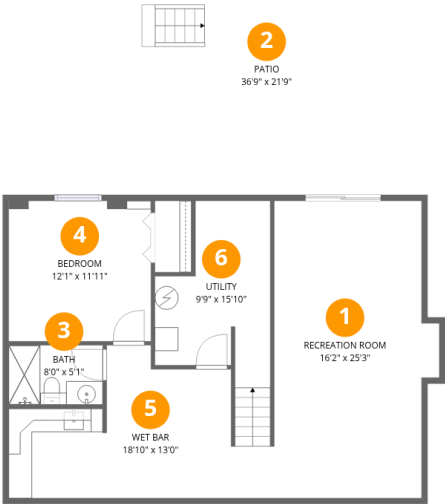
**1**  
Half baths



**1**  
Garages

Home data report

5717 Fieldview Drive, Roanoke, Roanoke County, Virginia, United States, 24019



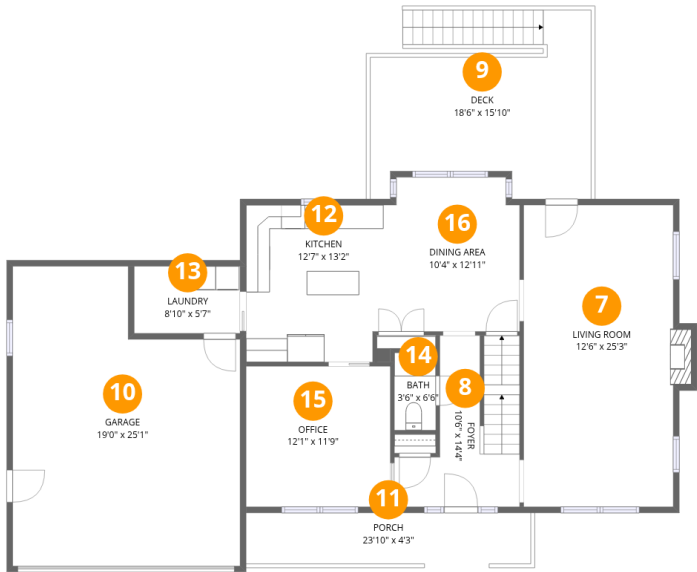
Room dimensions

Floor 1 Below grade Total:772sqft    Excluded: 859sqft

#		Dimensions	sqft	Counted as living area
1	Recreation Room	16'2" x 25'3"	409 sq. ft	Yes
2	Patio	36'9" x 21'9"	801 sq. ft	No
3	Bath	8'0" x 5'1"	40 sq. ft	Yes
4	Bedroom	12'1" x 11'11"	144 sq. ft	Yes
5	Wet Bar	18'10" x 13'0"	245 sq. ft	Yes
6	Utility	9'9" x 15'10"	155 sq. ft	No

Home data report

5717 Fieldview Drive, Roanoke, Roanoke County, Virginia, United States, 24019



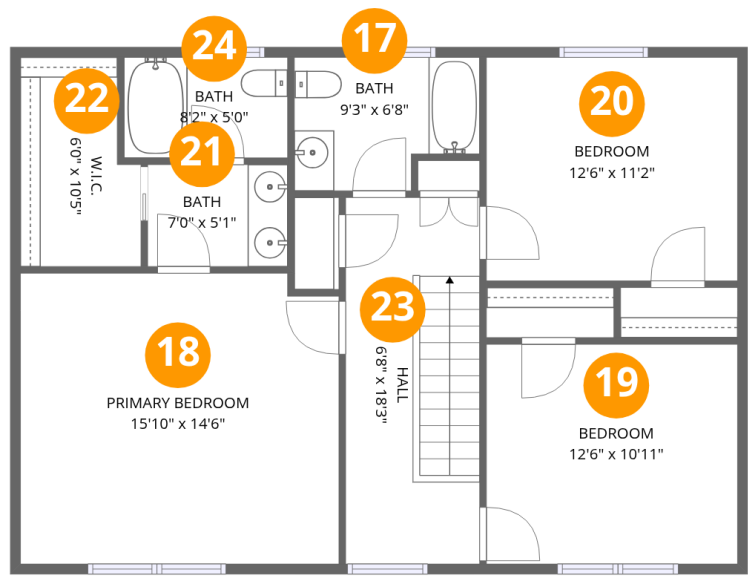
Room dimensions

Floor 2 Total:980sqft   Excluded: 775sqft

#		Dimensions	sqft	Counted as living area
7	Living Room	12'6" x 25'3"	316 sq. ft	Yes
8	Foyer	10'6" x 14'4"	150 sq. ft	Yes
9	Deck	18'6" x 15'10"	293 sq. ft	No
10	Garage	19'0" x 25'1"	478 sq. ft	No
11	Porch	23'10" x 4'3"	101 sq. ft	No
12	Kitchen	12'7" x 13'2"	165 sq. ft	Yes
13	Laundry	8'10" x 5'7"	50 sq. ft	Yes
14	Bath	3'6" x 6'6"	23 sq. ft	Yes
15	Office	12'1" x 11'9"	142 sq. ft	Yes
16	Dining Area	10'4" x 12'11"	133 sq. ft	Yes

Home data report

5717 Fieldview Drive, Roanoke, Roanoke County, Virginia, United States, 24019

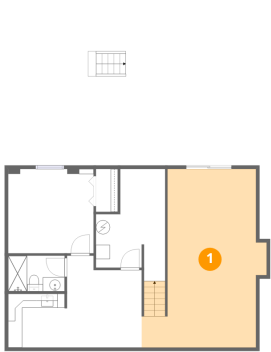


Room dimensions

Floor 3 Total:903sqft Excluded: 0sqft

#		Dimensions	sqft	Counted as living area
17	Bath	9'3" x 6'8"	62 sq. ft	Yes
18	Primary Bedroom	15'10" x 14'6"	230 sq. ft	Yes
19	Bedroom	12'6" x 10'11"	137 sq. ft	Yes
20	Bedroom	12'6" x 11'2"	140 sq. ft	Yes
21	Bath	7'0" x 5'1"	35 sq. ft	Yes
22	W.I.C.	6'0" x 10'5"	63 sq. ft	Yes
23	Hall	6'8" x 18'3"	122 sq. ft	Yes
24	Bath	8'2" x 5'0"	41 sq. ft	Yes

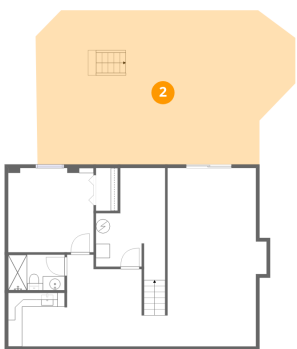
1 Floor 1 - Recreation Room



Dimensions: 16'2" x 25'3"  
Area: 409 sq. ft  
Counted as living area: Yes

Heated: Yes  
Finished: Yes  
Enclosed: Yes  
Contiguous: Yes  
Permitted: Yes  
Wet space: No  
Addition: No  
Conversion: No

2 Floor 1 - Patio



Dimensions: 36'9" x 21'9"  
Area: 801 sq. ft  
Counted as living area: No

Heated: No  
Finished: No  
Enclosed: No  
Contiguous: Yes  
Permitted: Yes  
Wet space: No  
Addition: No  
Conversion: No

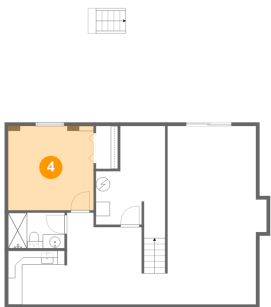
3 Floor 1 - Bath



Dimensions: 8'0" x 5'1"  
Area: 40 sq. ft  
Counted as living area: Yes

Heated: Yes  
Finished: Yes  
Enclosed: Yes  
Contiguous: Yes  
Permitted: Yes  
Wet space: Yes  
Addition: No  
Conversion: No

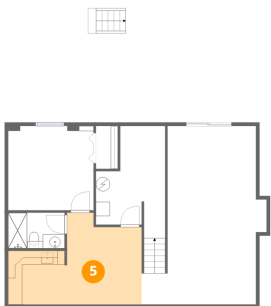
4 Floor 1 - Bedroom



Dimensions: 12'1" x 11'11"  
Area: 144 sq. ft  
Counted as living area: Yes

Heated: Yes  
Finished: Yes  
Enclosed: Yes  
Contiguous: Yes  
Permitted: Yes  
Wet space: No  
Addition: No  
Conversion: No

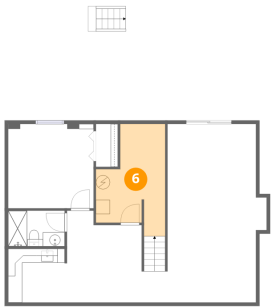
5 Floor 1 - Wet Bar



Dimensions: 18'10" x 13'0"  
Area: 245 sq. ft  
Counted as living area: Yes

Heated: Yes  
Finished: Yes  
Enclosed: Yes  
Contiguous: Yes  
Permitted: Yes  
Wet space: No  
Addition: No  
Conversion: No

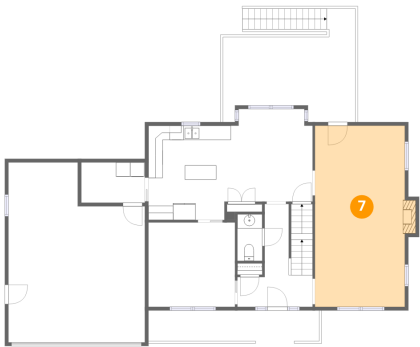
6 Floor 1 - Utility



Dimensions: 9'9" x 15'10"  
Area: 155 sq. ft  
Counted as living area: No

Heated: Yes  
Finished: No  
Enclosed: Yes  
Contiguous: Yes  
Permitted: Yes  
Wet space: No  
Addition: No  
Conversion: No

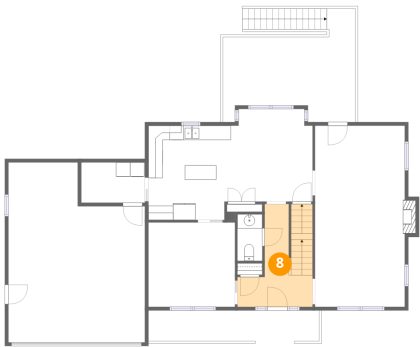
7 Floor 2 - Living Room



Dimensions: 12'6" x 25'3"  
Area: 316 sq. ft  
Counted as living area: Yes

Heated: Yes  
Finished: Yes  
Enclosed: Yes  
Contiguous: Yes  
Permitted: Yes  
Wet space: No  
Addition: No  
Conversion: No

8 Floor 2 - Foyer



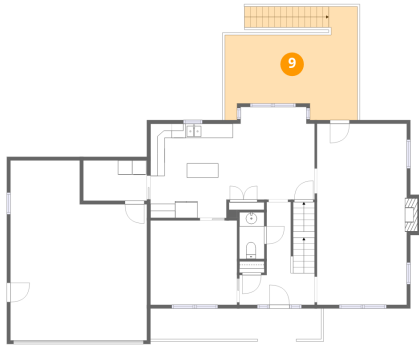
Dimensions: 10'6" x 14'4"  
Area: 150 sq. ft  
Counted as living area: Yes

Heated: Yes  
Finished: Yes  
Enclosed: Yes  
Contiguous: Yes  
Permitted: Yes  
Wet space: No  
Addition: No  
Conversion: No



5717 Fieldview Drive, Roanoke, Roanoke County, Virginia, United States, 24019

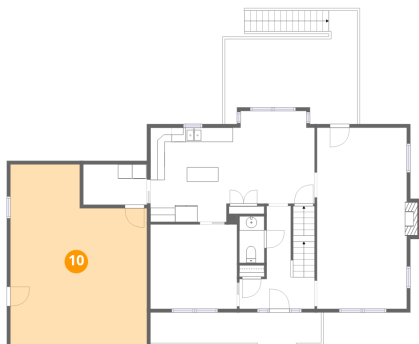
## 9 Floor 2 - Deck



Dimensions: 18'6" x 15'10"  
Area: 293 sq. ft  
Counted as living area: No

Heated: No  
Finished: No  
Enclosed: No  
Contiguous: Yes  
Permitted: Yes  
Wet space: No  
Addition: No  
Conversion: No

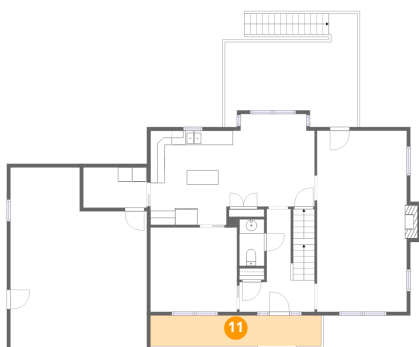
## 10 Floor 2 - Garage



Dimensions: 19'0" x 25'1"  
Area: 478 sq. ft  
Counted as living area: No

Heated: No  
Finished: No  
Enclosed: Yes  
Contiguous: Yes  
Permitted: Yes  
Wet space: No  
Addition: No  
Conversion: No

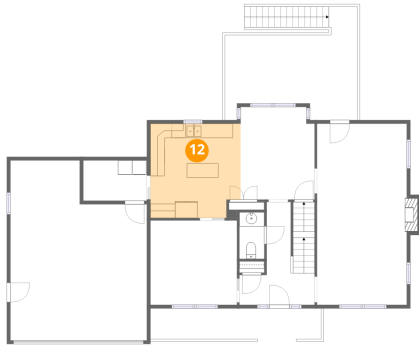
## 11 Floor 2 - Porch



Dimensions: 23'10" x 4'3"  
Area: 101 sq. ft  
Counted as living area: No

Heated: No  
Finished: No  
Enclosed: No  
Contiguous: Yes  
Permitted: Yes  
Wet space: No  
Addition: No  
Conversion: No

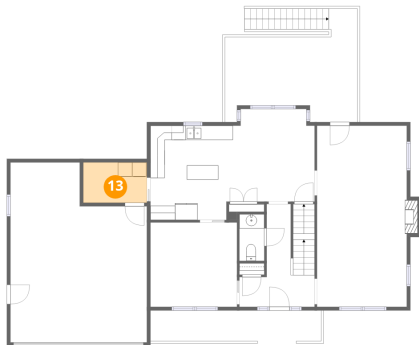
## 12 Floor 2 - Kitchen



Dimensions: 12'7" x 13'2"  
Area: 165 sq. ft  
Counted as living area: Yes

Heated: Yes  
Finished: Yes  
Enclosed: Yes  
Contiguous: Yes  
Permitted: Yes  
Wet space: No  
Addition: No  
Conversion: No

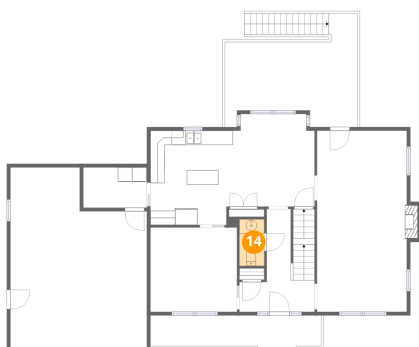
## 13 Floor 2 - Laundry



Dimensions: 8'10" x 5'7"  
Area: 50 sq. ft  
Counted as living area: Yes

Heated: Yes  
Finished: Yes  
Enclosed: Yes  
Contiguous: Yes  
Permitted: Yes  
Wet space: No  
Addition: No  
Conversion: No

## 14 Floor 2 - Bath

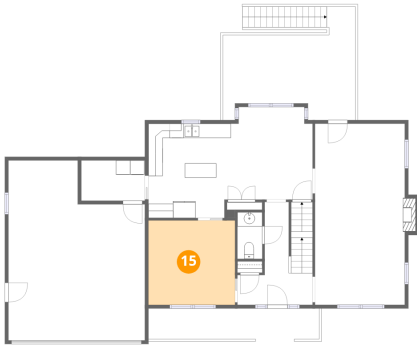


Dimensions: 3'6" x 6'6"  
Area: 23 sq. ft  
Counted as living area: Yes

Heated: Yes  
Finished: Yes  
Enclosed: Yes  
Contiguous: Yes  
Permitted: Yes  
Wet space: No  
Addition: No  
Conversion: No

5717 Fieldview Drive, Roanoke, Roanoke County, Virginia, United States, 24019

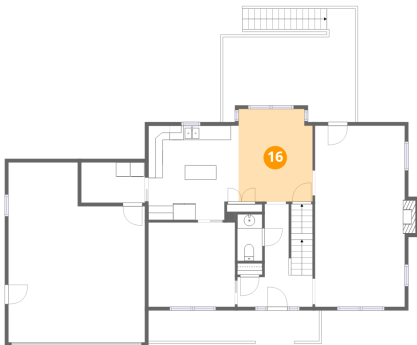
## 15 Floor 2 - Office



Dimensions: 12'1" x 11'9"  
Area: 142 sq. ft  
Counted as living area: Yes

Heated: Yes  
Finished: Yes  
Enclosed: Yes  
Contiguous: Yes  
Permitted: Yes  
Wet space: No  
Addition: No  
Conversion: No

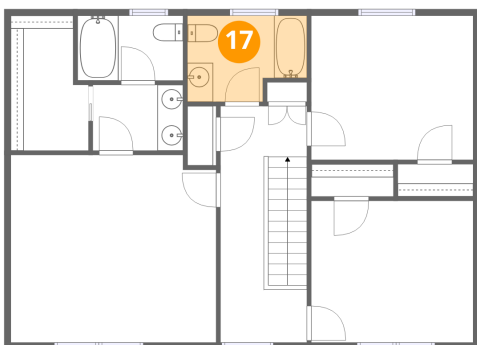
## 16 Floor 2 - Dining Area



Dimensions: 10'4" x 12'11"  
Area: 133 sq. ft  
Counted as living area: Yes

Heated: Yes  
Finished: Yes  
Enclosed: Yes  
Contiguous: Yes  
Permitted: Yes  
Wet space: No  
Addition: No  
Conversion: No

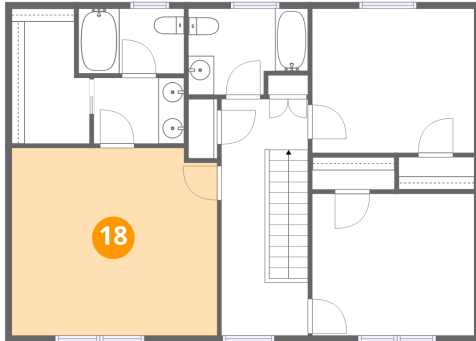
## 17 Floor 3 - Bath



Dimensions: 9'3" x 6'8"  
Area: 62 sq. ft  
Counted as living area: Yes

Heated: Yes  
Finished: Yes  
Enclosed: Yes  
Contiguous: Yes  
Permitted: Yes  
Wet space: Yes  
Addition: No  
Conversion: No

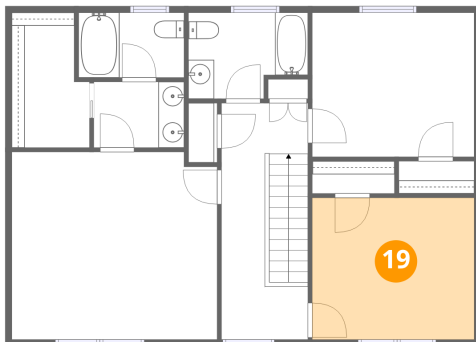
### 18 Floor 3 - Primary Bedroom



Dimensions: 15'10" x 14'6"  
Area: 230 sq. ft  
Counted as living area: Yes

Heated: Yes  
Finished: Yes  
Enclosed: Yes  
Contiguous: Yes  
Permitted: Yes  
Wet space: No  
Addition: No  
Conversion: No

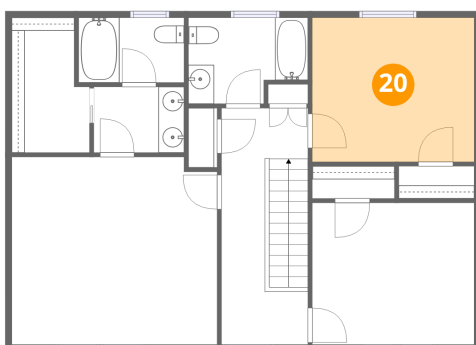
### 19 Floor 3 - Bedroom



Dimensions: 12'6" x 10'11"  
Area: 137 sq. ft  
Counted as living area: Yes

Heated: Yes  
Finished: Yes  
Enclosed: Yes  
Contiguous: Yes  
Permitted: Yes  
Wet space: No  
Addition: No  
Conversion: No

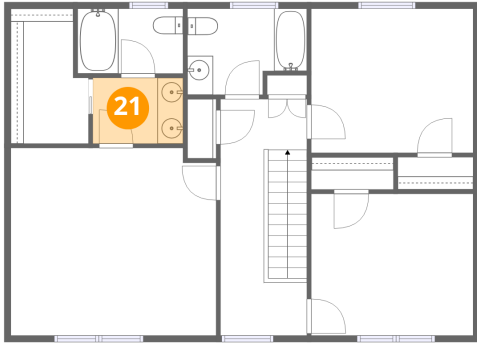
### 20 Floor 3 - Bedroom



Dimensions: 12'6" x 11'2"  
Area: 140 sq. ft  
Counted as living area: Yes

Heated: Yes  
Finished: Yes  
Enclosed: Yes  
Contiguous: Yes  
Permitted: Yes  
Wet space: No  
Addition: No  
Conversion: No

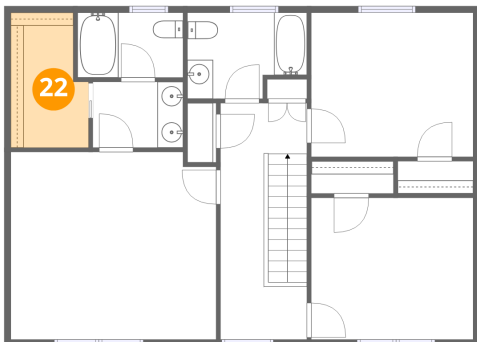
### 21 Floor 3 - Bath



Dimensions: 7'0" x 5'1"  
Area: 35 sq. ft  
Counted as living area: Yes

Heated: Yes  
Finished: Yes  
Enclosed: Yes  
Contiguous: Yes  
Permitted: Yes  
Wet space: Yes  
Addition: No  
Conversion: No

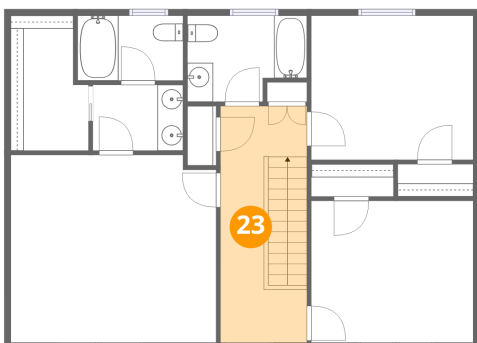
### 22 Floor 3 - W.I.C.



Dimensions: 6'0" x 10'5"  
Area: 63 sq. ft  
Counted as living area: Yes

Heated: Yes  
Finished: Yes  
Enclosed: Yes  
Contiguous: Yes  
Permitted: Yes  
Wet space: No  
Addition: No  
Conversion: No

### 23 Floor 3 - Hall

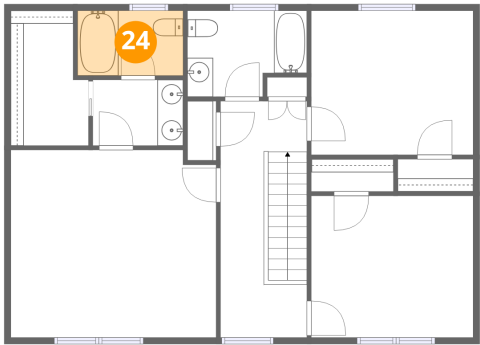


Dimensions: 6'8" x 18'3"  
Area: 122 sq. ft  
Counted as living area: Yes

Heated: Yes  
Finished: Yes  
Enclosed: Yes  
Contiguous: Yes  
Permitted: Yes  
Wet space: No  
Addition: No  
Conversion: No

5717 Fieldview Drive, Roanoke, Roanoke County, Virginia, United States, 24019

24 Floor 3 - Bath



Dimensions: 8'2" x 5'0"  
Area: 41 sq. ft  
Counted as living area: Yes

Heated: Yes  
Finished: Yes  
Enclosed: Yes  
Contiguous: Yes  
Permitted: Yes  
Wet space: Yes  
Addition: No  
Conversion: No