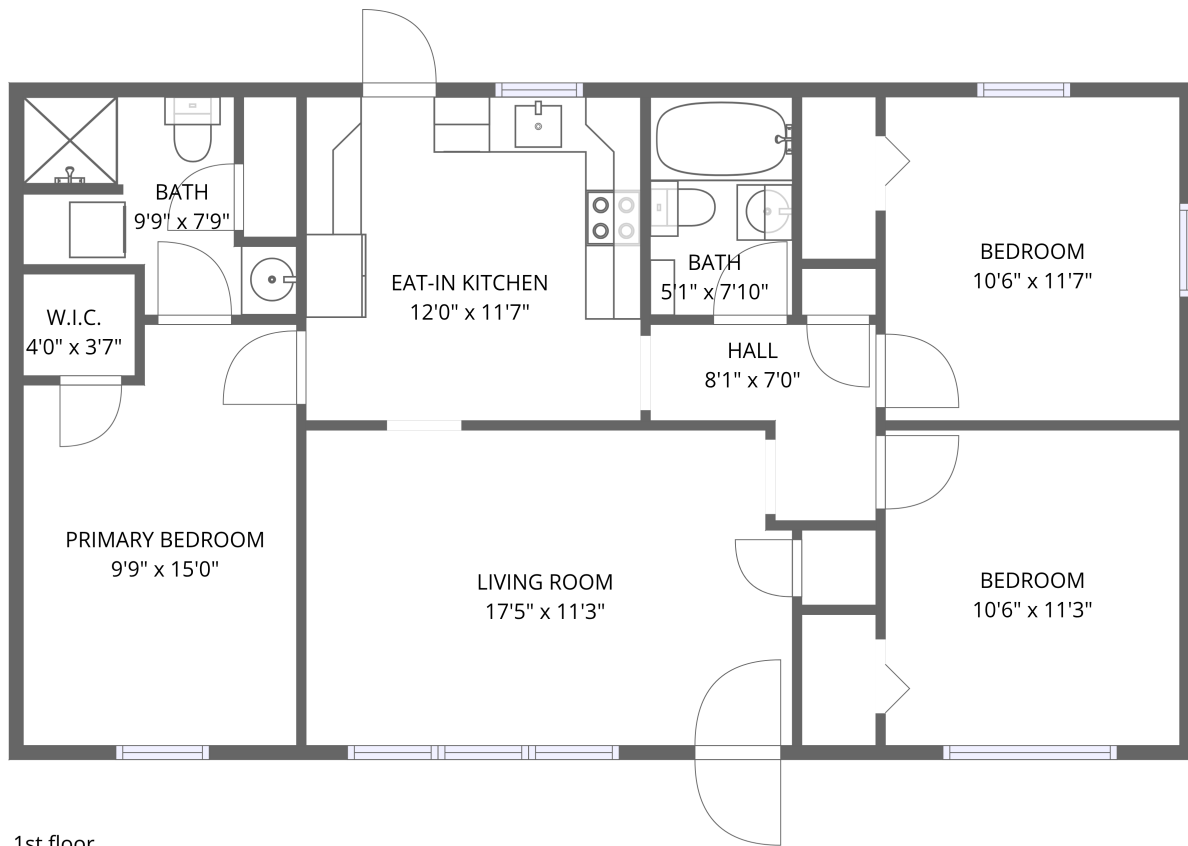


Home data report

521 Tipton Ave, Knoxville, TN, US



Total Area: 958 sq. ft

1st Floor: 958 sq. ft

Excluded: Walls: 66 sq. ft

Property summary

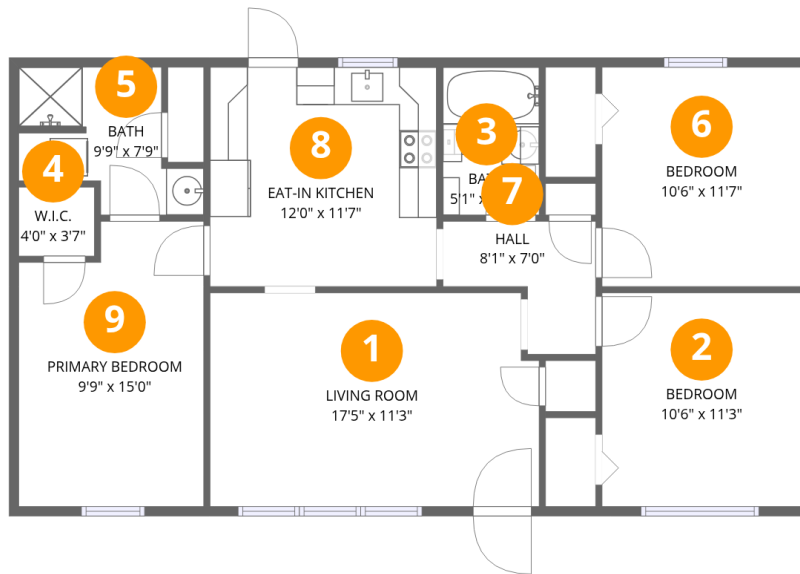
 **1** Floors

 **3** Bedrooms

 **2** Bathrooms

Scan captured on Sat, 09 May 2026 01:10:56 GMT

FLOOR PLAN CREATED BY CUBICASA APP. MEASUREMENTS ARE CONSIDERED RELIABLE BUT NOT ACCURATE.



Room dimensions

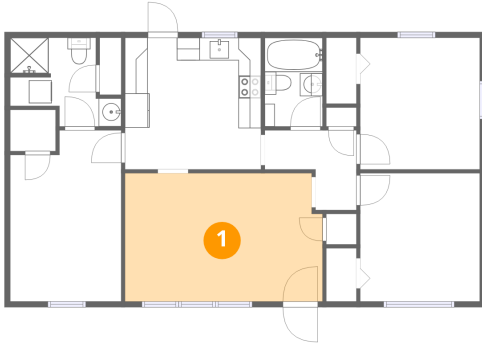
Floor 1

Total:958sqft

Excluded: 0sqft

#		Dimensions	sqft	Counted as living area
1	Living Room	17'5" x 11'3"	193 sq. ft	Yes
2	Bedroom	10'6" x 11'3"	119 sq. ft	Yes
3	Bath	5'1" x 7'10"	40 sq. ft	Yes
4	W.I.C.	4'0" x 3'7"	15 sq. ft	Yes
5	Bath	9'9" x 7'9"	55 sq. ft	Yes
6	Bedroom	10'6" x 11'7"	122 sq. ft	Yes
7	Hall	8'1" x 7'0"	41 sq. ft	Yes
8	Eat-in Kitchen	12'0" x 11'7"	139 sq. ft	Yes
9	Primary Bedroom	9'9" x 15'0"	138 sq. ft	Yes

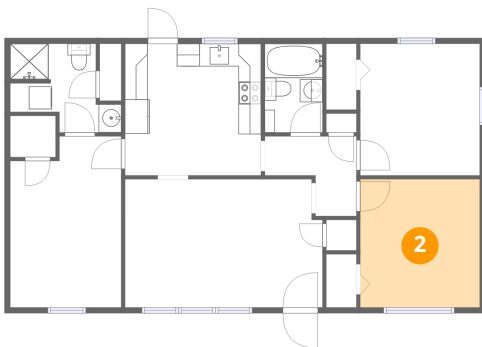
1 Floor 1 - Living Room



Dimensions: 17'5" x 11'3"
Area: 193 sq. ft
Counted as living area: Yes

Heated: Yes
Finished: Yes
Enclosed: Yes
Contiguous: Yes
Permitted: Yes
Wet space: No
Addition: No
Conversion: No

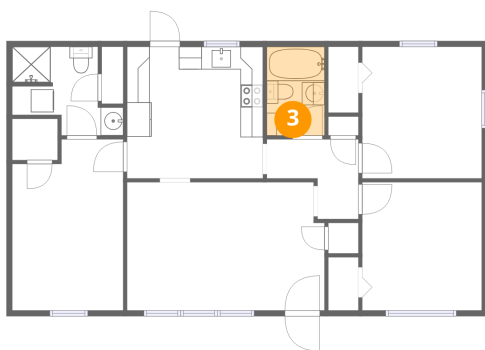
2 Floor 1 - Bedroom



Dimensions: 10'6" x 11'3"
Area: 119 sq. ft
Counted as living area: Yes

Heated: Yes
Finished: Yes
Enclosed: Yes
Contiguous: Yes
Permitted: Yes
Wet space: No
Addition: No
Conversion: No

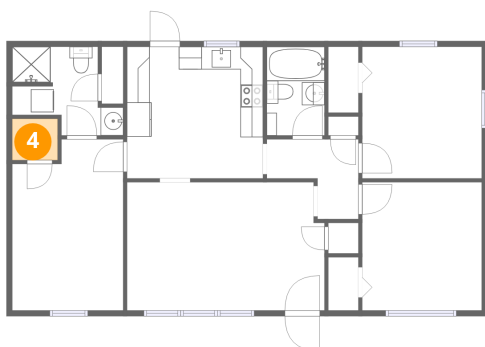
3 Floor 1 - Bath



Dimensions: 5'1" x 7'10"
Area: 40 sq. ft
Counted as living area: Yes

Heated: Yes
Finished: Yes
Enclosed: Yes
Contiguous: Yes
Permitted: Yes
Wet space: Yes
Addition: No
Conversion: No

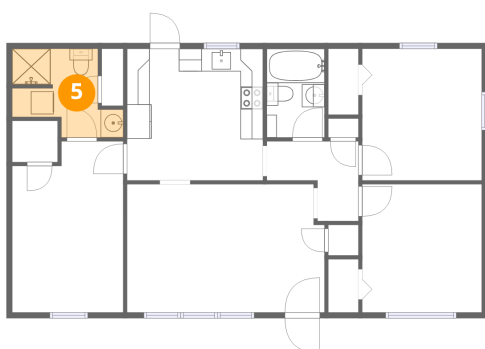
4 Floor 1 - W.I.C.



Dimensions: 4'0" x 3'7"
Area: 15 sq. ft
Counted as living area: Yes

Heated: Yes
Finished: Yes
Enclosed: Yes
Contiguous: Yes
Permitted: Yes
Wet space: No
Addition: No
Conversion: No

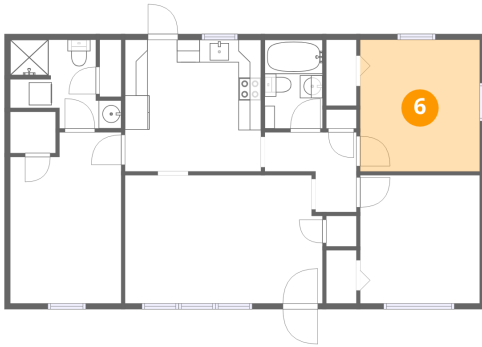
5 Floor 1 - Bath



Dimensions: 9'9" x 7'9"
Area: 55 sq. ft
Counted as living area: Yes

Heated: Yes
Finished: Yes
Enclosed: Yes
Contiguous: Yes
Permitted: Yes
Wet space: Yes
Addition: No
Conversion: No

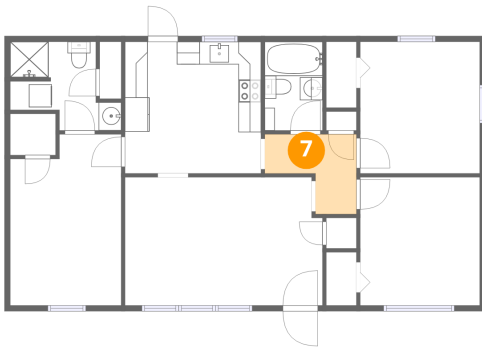
6 Floor 1 - Bedroom



Dimensions: 10'6" x 11'7"
Area: 122 sq. ft
Counted as living area: Yes

Heated: Yes
Finished: Yes
Enclosed: Yes
Contiguous: Yes
Permitted: Yes
Wet space: No
Addition: No
Conversion: No

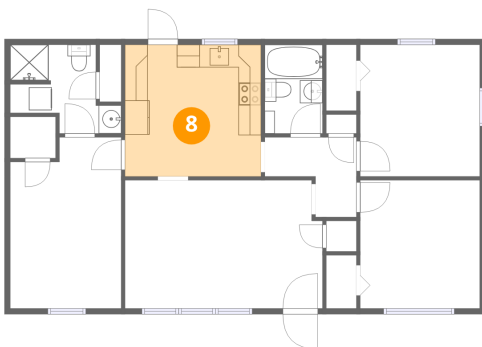
7 Floor 1 - Hall



Dimensions: 8'1" x 7'0"
Area: 41 sq. ft
Counted as living area: Yes

Heated: Yes
Finished: Yes
Enclosed: Yes
Contiguous: Yes
Permitted: Yes
Wet space: No
Addition: No
Conversion: No

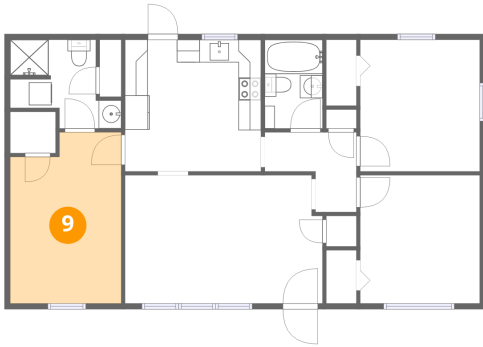
8 Floor 1 - Eat-in Kitchen



Dimensions: 12'0" x 11'7"
Area: 139 sq. ft
Counted as living area: Yes

Heated: Yes
Finished: Yes
Enclosed: Yes
Contiguous: Yes
Permitted: Yes
Wet space: No
Addition: No
Conversion: No

9 Floor 1 - Primary Bedroom



Dimensions: 9'9" x 15'0"
Area: 138 sq. ft
Counted as living area: Yes

Heated: Yes
Finished: Yes
Enclosed: Yes
Contiguous: Yes
Permitted: Yes
Wet space: No
Addition: No
Conversion: No