

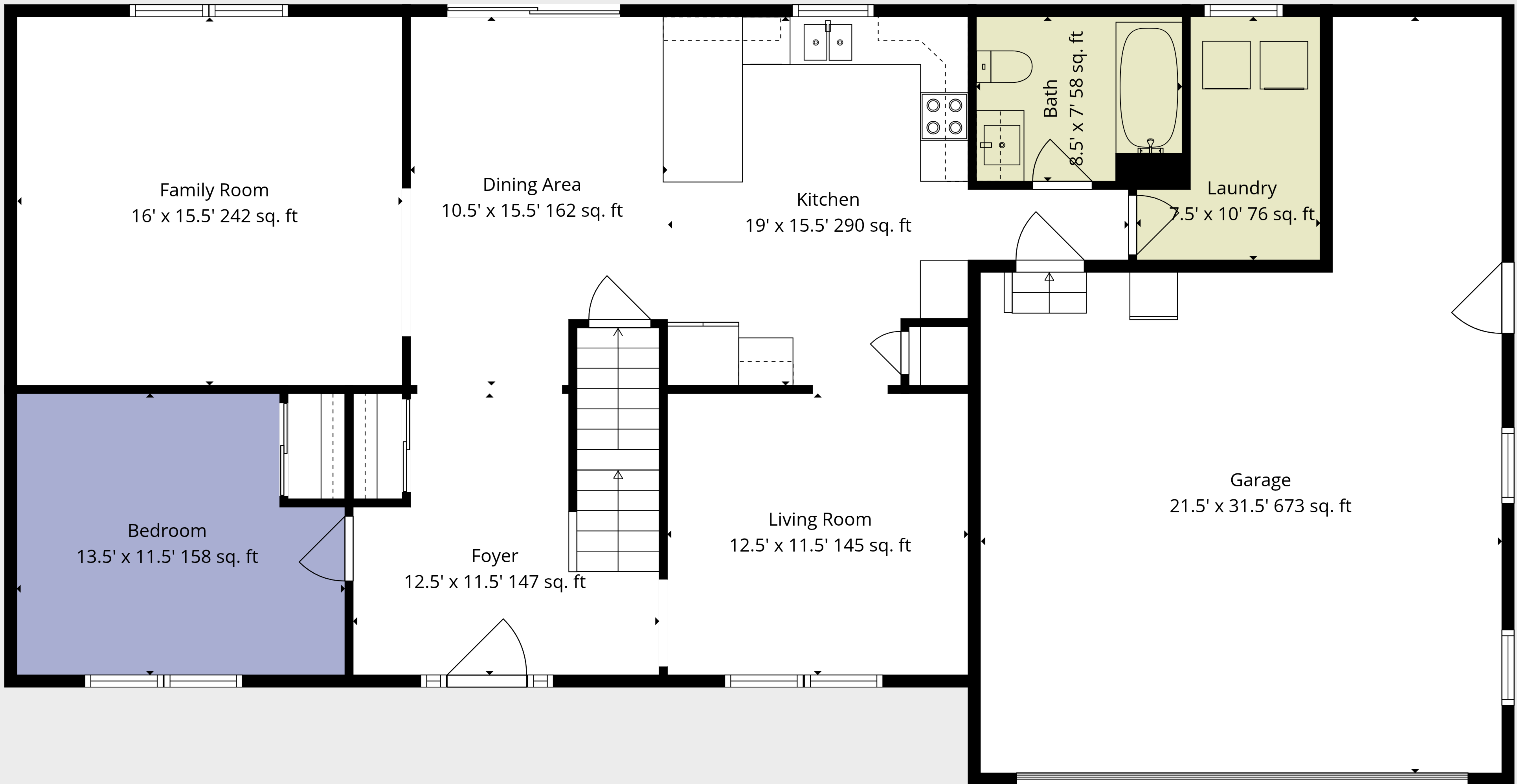
Basement
38' x 27' 1037 sq. ft

Room
11.5' x 11.5' 126 sq. ft

TOTAL: 2319 sq. ft

Basement 1: 151 sq. ft, 1st floor: 1217 sq. ft, 2nd floor: 951 sq. ft
EXCLUDED AREAS: BASEMENT: 887 sq. ft, LOW CEILING: 158 sq. ft, GARAGE: 521 sq. ft,
OPEN TO BELOW: 134 sq. ft, WALLS: 264 sq. ft

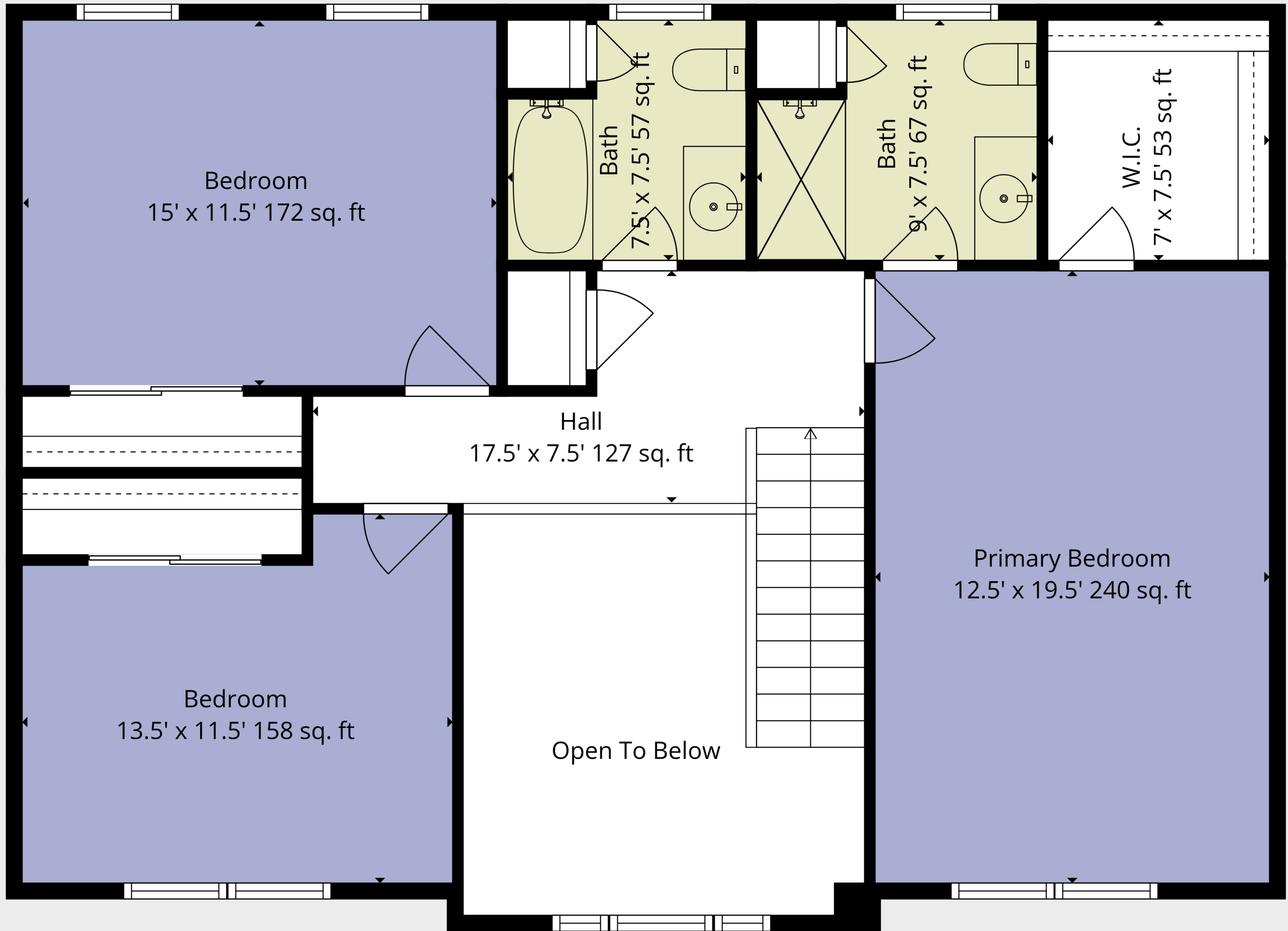




TOTAL: 2319 sq. ft

Basement 1: 151 sq. ft, 1st floor: 1217 sq. ft, 2nd floor: 951 sq. ft
 EXCLUDED AREAS: BASEMENT: 887 sq. ft, LOW CEILING: 158 sq. ft, GARAGE: 521 sq. ft,
 OPEN TO BELOW: 134 sq. ft, WALLS: 264 sq. ft

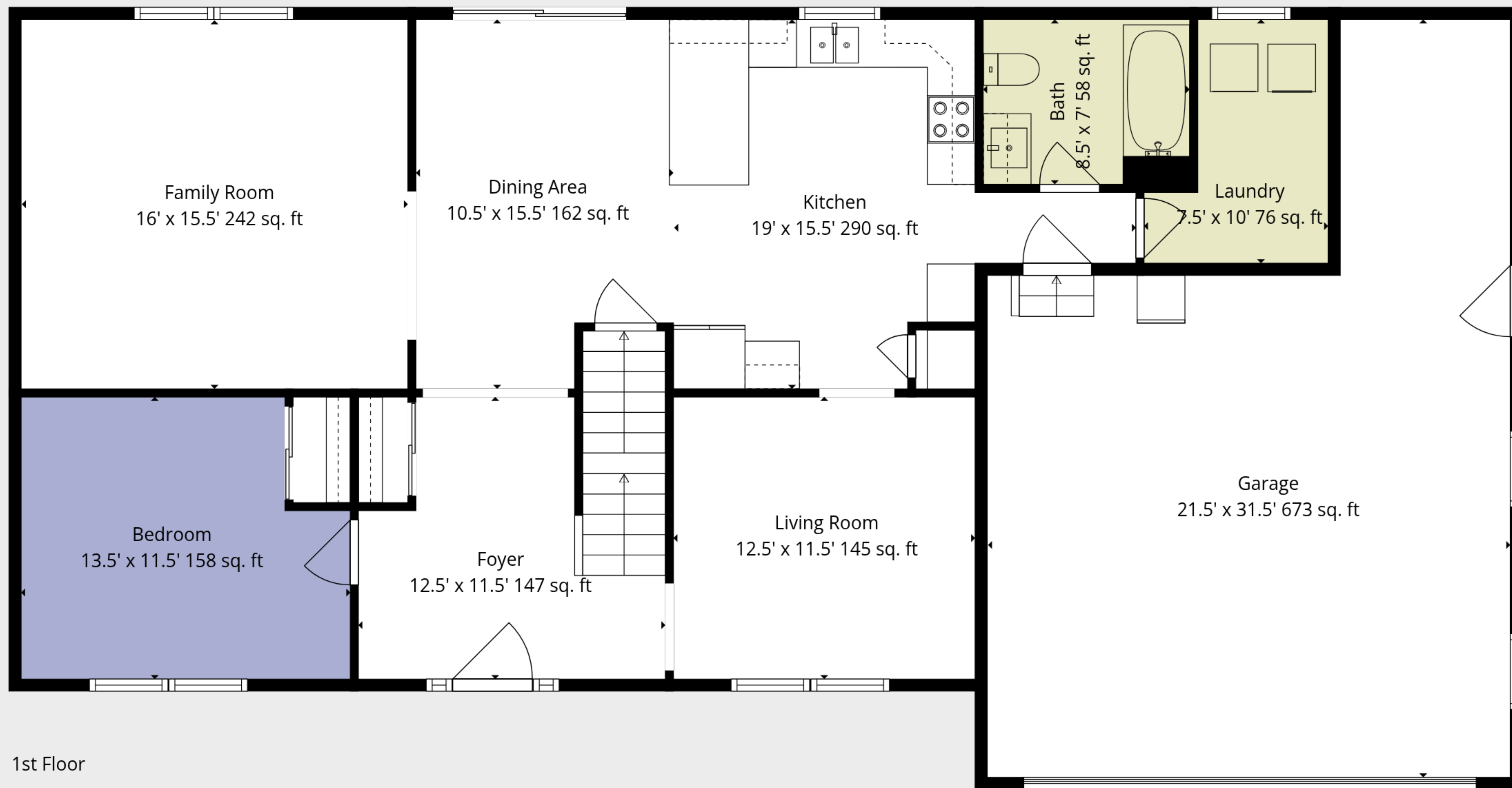




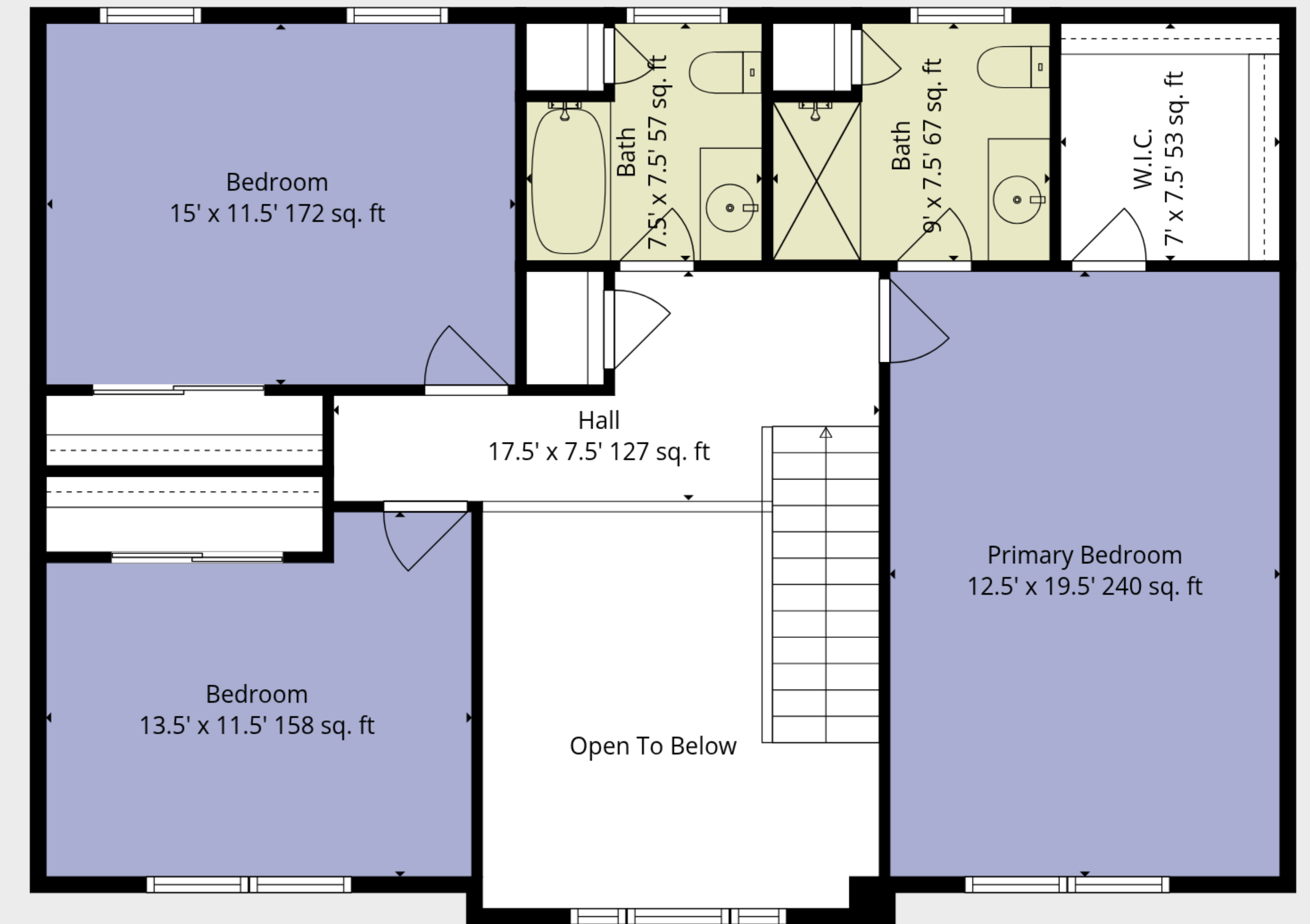
TOTAL: 2319 sq. ft

Basement 1: 151 sq. ft, 1st floor: 1217 sq. ft, 2nd floor: 951 sq. ft
 EXCLUDED AREAS: BASEMENT: 887 sq. ft, LOW CEILING: 158 sq. ft, GARAGE: 521 sq. ft,
 OPEN TO BELOW: 134 sq. ft, WALLS: 264 sq. ft

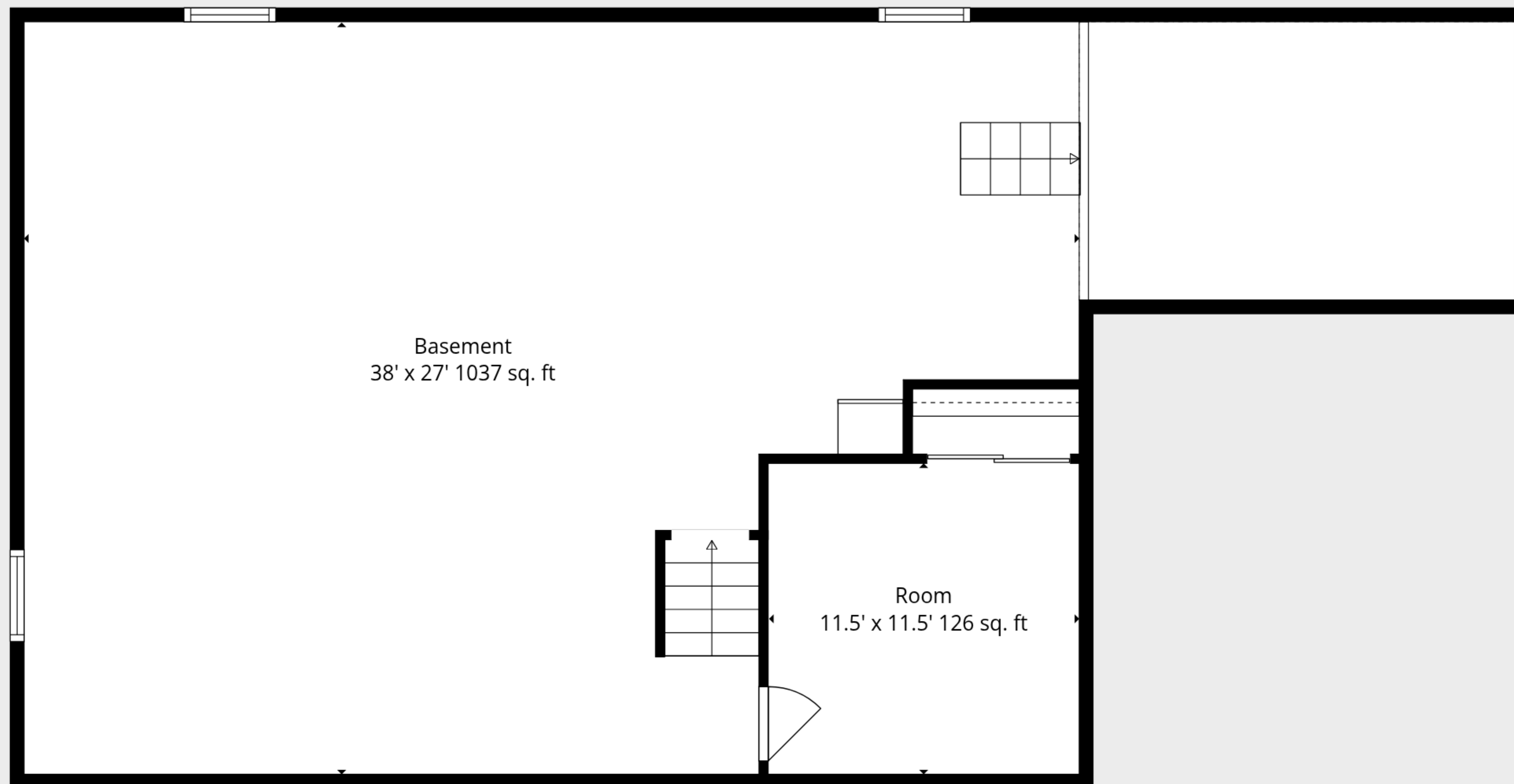




1st Floor



2nd Floor



Basement 1

TOTAL: 2319 sq. ft

Basement 1: 151 sq. ft, 1st floor: 1217 sq. ft, 2nd floor: 951 sq. ft
 EXCLUDED AREAS: BASEMENT: 887 sq. ft, LOW CEILING: 158 sq. ft, GARAGE: 521 sq. ft,
 OPEN TO BELOW: 134 sq. ft, WALLS: 264 sq. ft

