

## Home data report

3265 Preston Shore Drive, Rockingham, Virginia, United States



**Total Area: 3030 sq. ft**

Basement: 898 sq. ft, 1st Floor: 1116 sq. ft, 2nd Floor: 1016 sq. ft

Excluded: Utility 51 sq. ft, Patio 189 sq. ft, Porch 197 sq. ft, Garage 548 sq. ft, Balcony 150 sq. ft, Walls: 236 sq. ft

## Property summary

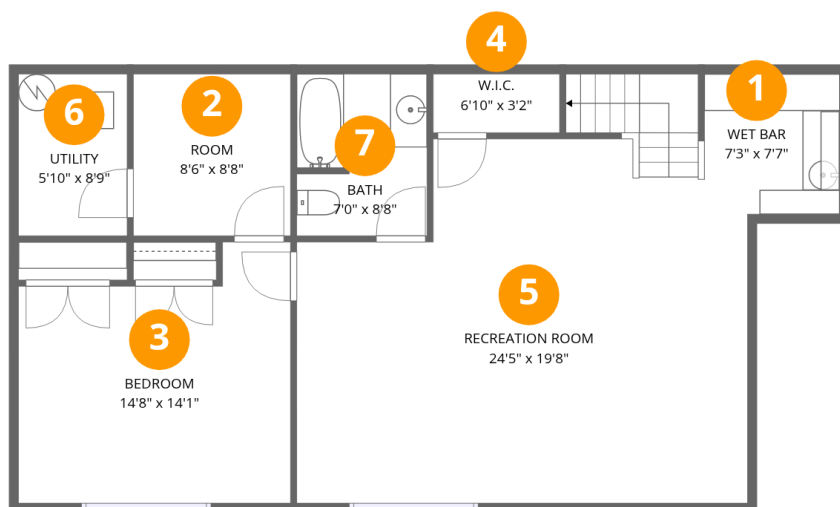


Home data report

**3265 Preston Shore Drive, Rockingham, Virginia, United States**

 **1**  
Half baths

 **1**  
Garages

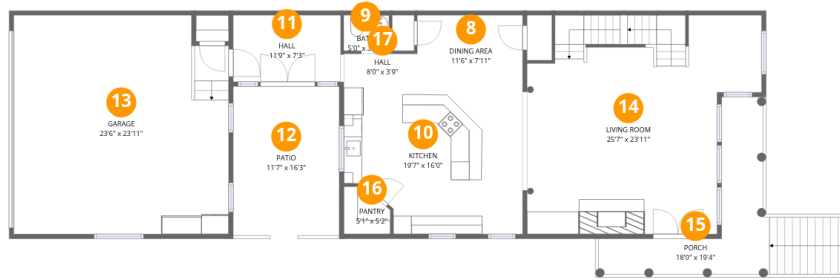


## Room dimensions

Floor 1 Below grade

Total:898sqft Excluded: 51sqft

#		Dimensions	sqft	Counted as living area
1	Wet Bar	7'3" x 7'7"	55 sq. ft	Yes
2	Room	8'6" x 8'8"	74 sq. ft	Yes
3	Bedroom	14'8" x 14'1"	181 sq. ft	Yes
4	W.I.C.	6'10" x 3'2"	22 sq. ft	Yes
5	Recreation Room	24'5" x 19'8"	452 sq. ft	Yes
6	Utility	5'10" x 8'9"	51 sq. ft	No
7	Bath	7'0" x 8'8"	60 sq. ft	Yes



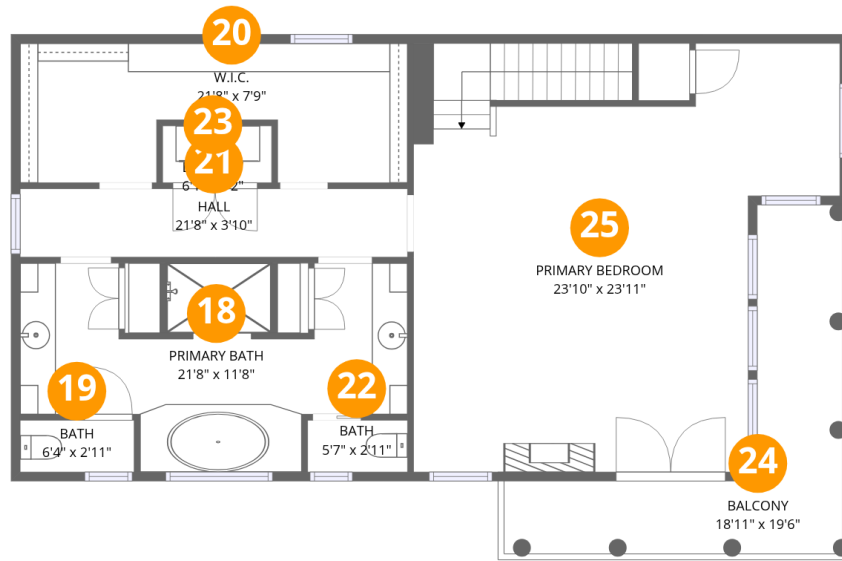
## Room dimensions

Floor 2

Total: 1116 sqft

Excluded: 934 sqft

#		Dimensions	sqft	Counted as living area
8	Dining Area	11'6" x 7'11"	91 sq. ft	Yes
9	Bath	5'0" x 3'11"	19 sq. ft	Yes
10	Kitchen	19'7" x 16'0"	287 sq. ft	Yes
11	Hall	11'9" x 7'3"	85 sq. ft	Yes
12	Patio	11'7" x 16'3"	189 sq. ft	No
13	Garage	23'6" x 23'11"	548 sq. ft	No
14	Living Room	25'7" x 23'11"	521 sq. ft	Yes
15	Porch	18'0" x 19'4"	197 sq. ft	No
16	Pantry	5'1" x 5'2"	23 sq. ft	Yes
17	Hall	8'0" x 3'9"	30 sq. ft	Yes



## Room dimensions

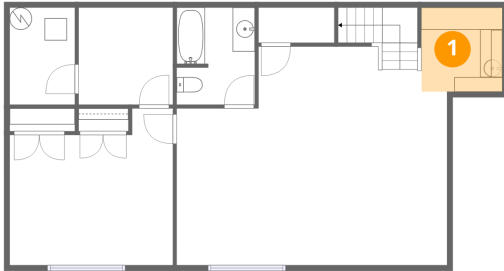
Floor 3

Total: 1016 sqft

Excluded: 150 sqft

#		Dimensions	sqft	Counted as living area
18	Primary Bath	21'8" x 11'8"	189 sq. ft	Yes
19	Bath	6'4" x 2'11"	18 sq. ft	Yes
20	W.I.C.	21'8" x 7'9"	144 sq. ft	Yes
21	Hall	21'8" x 3'10"	83 sq. ft	Yes
22	Bath	5'7" x 2'11"	16 sq. ft	Yes
23	Laundry	6'1" x 3'2"	19 sq. ft	Yes
24	Balcony	18'11" x 19'6"	150 sq. ft	No
25	Primary Bedroom	23'10" x 23'11"	475 sq. ft	Yes

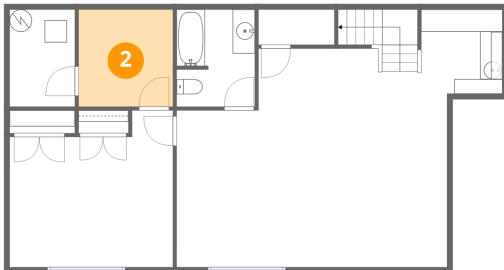
## 1 Floor 1 - Wet Bar



Dimensions: 7'3" x 7'7"  
Area: 55 sq. ft  
Counted as living area: Yes

Heated: Yes  
Finished: Yes  
Enclosed: Yes  
Contiguous: Yes  
Permitted: Yes  
Wet space: No  
Addition: No  
Conversion: No

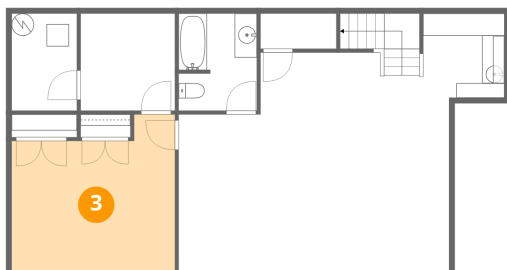
## 2 Floor 1 - Room



Dimensions: 8'6" x 8'8"  
Area: 74 sq. ft  
Counted as living area: Yes

Heated: Yes  
Finished: Yes  
Enclosed: Yes  
Contiguous: Yes  
Permitted: Yes  
Wet space: No  
Addition: No  
Conversion: No

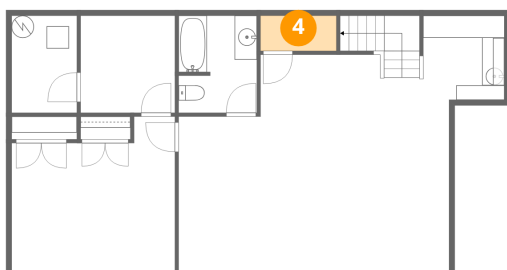
### 3 Floor 1 - Bedroom



Dimensions: 14'8" x 14'1"  
Area: 181 sq. ft  
Counted as living area: Yes

Heated: Yes  
Finished: Yes  
Enclosed: Yes  
Contiguous: Yes  
Permitted: Yes  
Wet space: No  
Addition: No  
Conversion: No

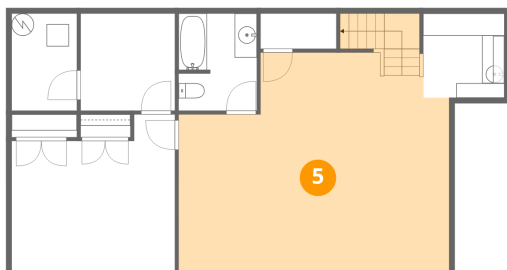
### 4 Floor 1 - W.I.C.



Dimensions: 6'10" x 3'2"  
Area: 22 sq. ft  
Counted as living area: Yes

Heated: Yes  
Finished: Yes  
Enclosed: Yes  
Contiguous: Yes  
Permitted: Yes  
Wet space: No  
Addition: No  
Conversion: No

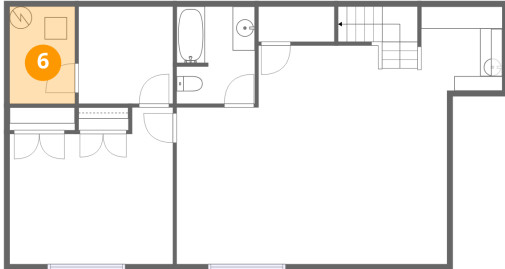
### 5 Floor 1 - Recreation Room



Dimensions: 24'5" x 19'8"  
Area: 452 sq. ft  
Counted as living area: Yes

Heated: Yes  
Finished: Yes  
Enclosed: Yes  
Contiguous: Yes  
Permitted: Yes  
Wet space: No  
Addition: No  
Conversion: No

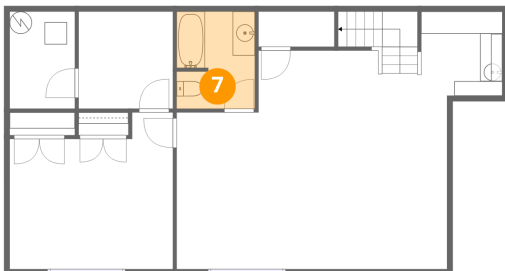
## 6 Floor 1 - Utility



Dimensions: 5'10" x 8'9"  
Area: 51 sq. ft  
Counted as living area: No

Heated: Yes  
Finished: No  
Enclosed: Yes  
Contiguous: Yes  
Permitted: Yes  
Wet space: No  
Addition: No  
Conversion: No

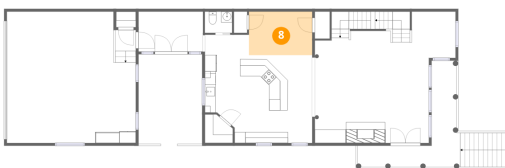
## 7 Floor 1 - Bath



Dimensions: 7'0" x 8'8"  
Area: 60 sq. ft  
Counted as living area: Yes

Heated: Yes  
Finished: Yes  
Enclosed: Yes  
Contiguous: Yes  
Permitted: Yes  
Wet space: Yes  
Addition: No  
Conversion: No

## 8 Floor 2 - Dining Area



Dimensions: 11'6" x 7'11"  
Area: 91 sq. ft  
Counted as living area: Yes

Heated: Yes  
Finished: Yes  
Enclosed: Yes  
Contiguous: Yes  
Permitted: Yes  
Wet space: No  
Addition: No  
Conversion: No

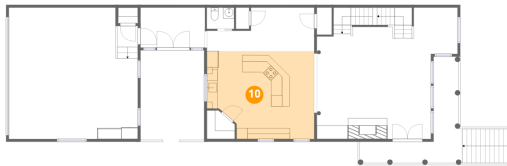
## 9 Floor 2 - Bath



Dimensions: 5'0" x 3'11"  
Area: 19 sq. ft  
Counted as living area: Yes

Heated: Yes  
Finished: Yes  
Enclosed: Yes  
Contiguous: Yes  
Permitted: Yes  
Wet space: Yes  
Addition: No  
Conversion: No

## 10 Floor 2 - Kitchen



Dimensions: 19'7" x 16'0"  
Area: 287 sq. ft  
Counted as living area: Yes

Heated: Yes  
Finished: Yes  
Enclosed: Yes  
Contiguous: Yes  
Permitted: Yes  
Wet space: No  
Addition: No  
Conversion: No

## 11 Floor 2 - Hall



Dimensions: 11'9" x 7'3"  
Area: 85 sq. ft  
Counted as living area: Yes

Heated: Yes  
Finished: Yes  
Enclosed: Yes  
Contiguous: Yes  
Permitted: Yes  
Wet space: No  
Addition: No  
Conversion: No

## 12 Floor 2 - Patio



Dimensions: 11'7" x 16'3"  
Area: 189 sq. ft  
Counted as living area: No

Heated: No  
Finished: No  
Enclosed: No  
Contiguous: Yes  
Permitted: Yes  
Wet space: No  
Addition: No  
Conversion: No

## 13 Floor 2 - Garage



Dimensions: 23'6" x 23'11"  
Area: 548 sq. ft  
Counted as living area: No

Heated: No  
Finished: No  
Enclosed: Yes  
Contiguous: Yes  
Permitted: Yes  
Wet space: No  
Addition: No  
Conversion: No

## 14 Floor 2 - Living Room



Dimensions: 25'7" x 23'11"  
Area: 521 sq. ft  
Counted as living area: Yes

Heated: Yes  
Finished: Yes  
Enclosed: Yes  
Contiguous: Yes  
Permitted: Yes  
Wet space: No  
Addition: No  
Conversion: No

### 15 Floor 2 - Porch



Dimensions: 18'0" x 19'4"  
Area: 197 sq. ft  
Counted as living area: No

Heated: No  
Finished: No  
Enclosed: No  
Contiguous: Yes  
Permitted: Yes  
Wet space: No  
Addition: No  
Conversion: No

### 16 Floor 2 - Pantry



Dimensions: 5'1" x 5'2"  
Area: 23 sq. ft  
Counted as living area: Yes

Heated: Yes  
Finished: Yes  
Enclosed: Yes  
Contiguous: Yes  
Permitted: Yes  
Wet space: No  
Addition: No  
Conversion: No

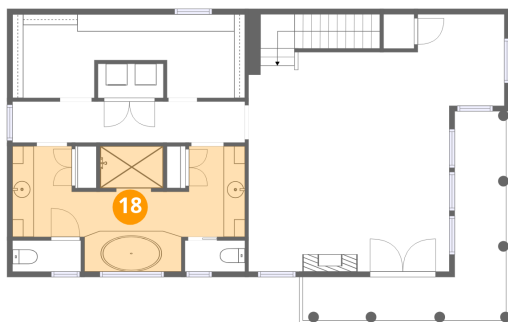
### 17 Floor 2 - Hall



Dimensions: 8'0" x 3'9"  
Area: 30 sq. ft  
Counted as living area: Yes

Heated: Yes  
Finished: Yes  
Enclosed: Yes  
Contiguous: Yes  
Permitted: Yes  
Wet space: No  
Addition: No  
Conversion: No

**18** Floor 3 - Primary Bath



Dimensions: 21'8" x 11'8"  
Area: 189 sq. ft  
Counted as living area: Yes

Heated: Yes  
Finished: Yes  
Enclosed: Yes  
Contiguous: Yes  
Permitted: Yes  
Wet space: Yes  
Addition: No  
Conversion: No

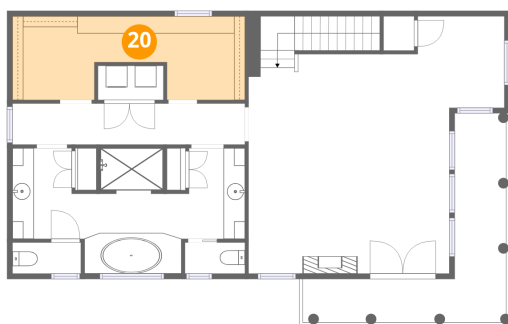
**19** Floor 3 - Bath



Dimensions: 6'4" x 2'11"  
Area: 18 sq. ft  
Counted as living area: Yes

Heated: Yes  
Finished: Yes  
Enclosed: Yes  
Contiguous: Yes  
Permitted: Yes  
Wet space: Yes  
Addition: No  
Conversion: No

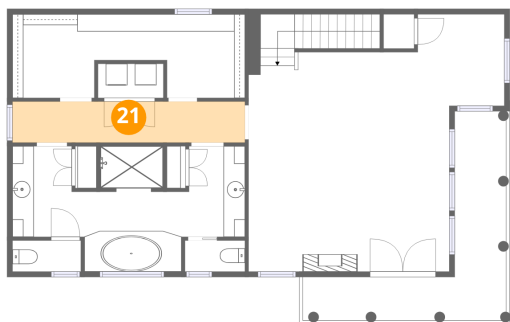
**20** Floor 3 - W.I.C.



Dimensions: 21'8" x 7'9"  
Area: 144 sq. ft  
Counted as living area: Yes

Heated: Yes  
Finished: Yes  
Enclosed: Yes  
Contiguous: Yes  
Permitted: Yes  
Wet space: No  
Addition: No  
Conversion: No

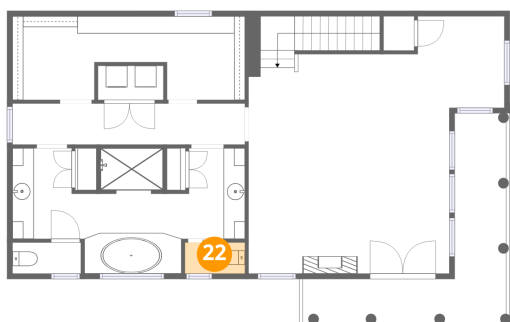
### 21 Floor 3 - Hall



Dimensions: 21'8" x 3'10"  
Area: 83 sq. ft  
Counted as living area: Yes

Heated: Yes  
Finished: Yes  
Enclosed: Yes  
Contiguous: Yes  
Permitted: Yes  
Wet space: No  
Addition: No  
Conversion: No

### 22 Floor 3 - Bath



Dimensions: 5'7" x 2'11"  
Area: 16 sq. ft  
Counted as living area: Yes

Heated: Yes  
Finished: Yes  
Enclosed: Yes  
Contiguous: Yes  
Permitted: Yes  
Wet space: Yes  
Addition: No  
Conversion: No

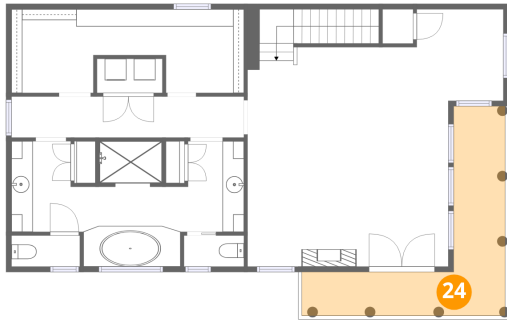
### 23 Floor 3 - Laundry



Dimensions: 6'1" x 3'2"  
Area: 19 sq. ft  
Counted as living area: Yes

Heated: Yes  
Finished: Yes  
Enclosed: Yes  
Contiguous: Yes  
Permitted: Yes  
Wet space: No  
Addition: No  
Conversion: No

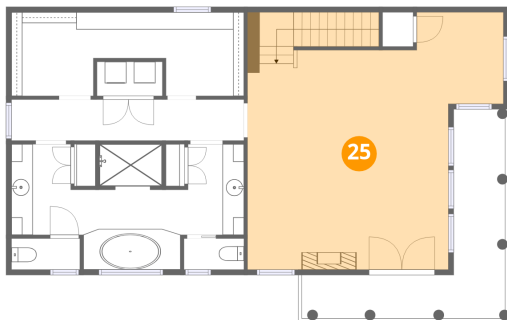
**24** Floor 3 - Balcony



Dimensions: 18'11" x 19'6"  
Area: 150 sq. ft  
Counted as living area: No

Heated: No  
Finished: No  
Enclosed: No  
Contiguous: Yes  
Permitted: Yes  
Wet space: No  
Addition: No  
Conversion: No

**25** Floor 3 - Primary Bedroom



Dimensions: 23'10" x 23'11"  
Area: 475 sq. ft  
Counted as living area: Yes

Heated: Yes  
Finished: Yes  
Enclosed: Yes  
Contiguous: Yes  
Permitted: Yes  
Wet space: No  
Addition: No  
Conversion: No