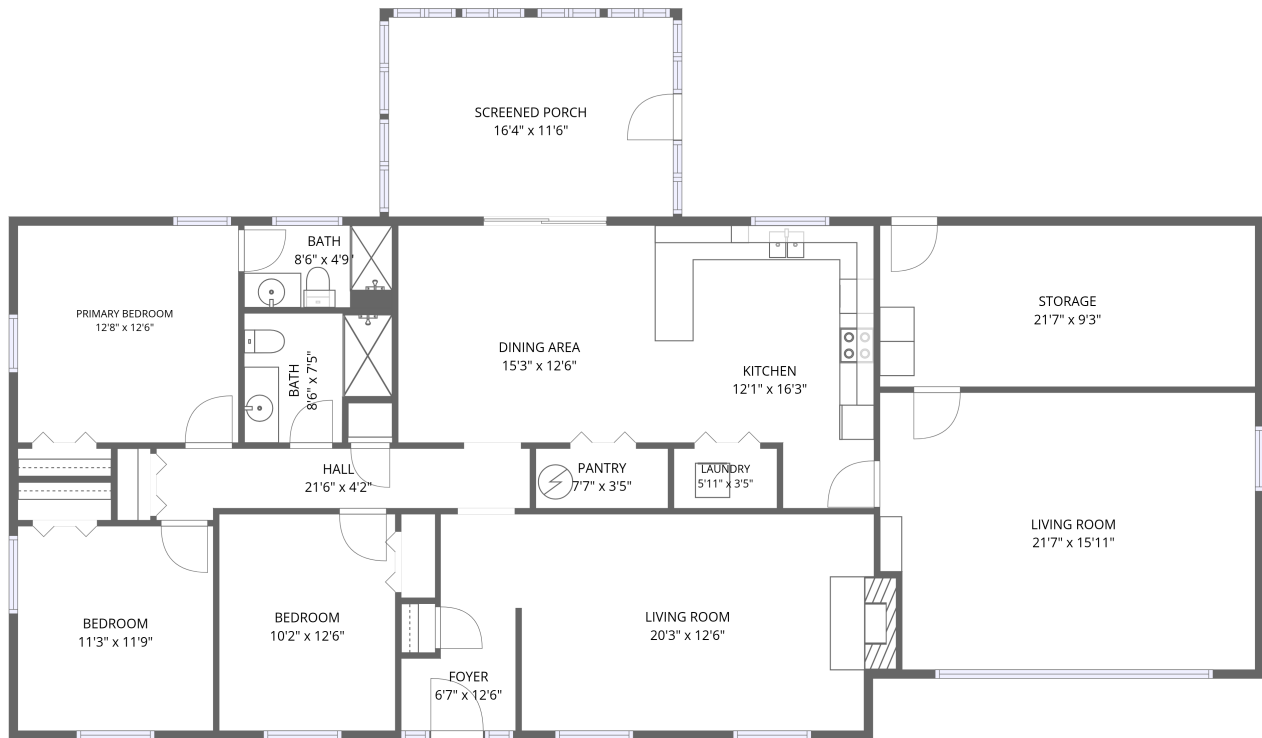


## Home data report

# 160 Old Martinsburg Rd, Shepherdstown, WV, US



1st floor

**Total Area: 1788 sq. ft**

1st Floor: 1788 sq. ft

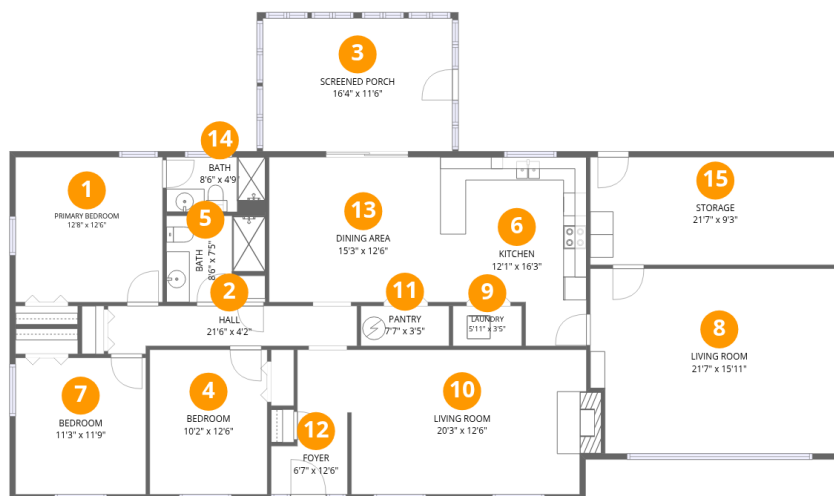
Excluded: Screened porch 188 sq. ft, Storage 200 sq. ft, Walls: 122 sq. ft

## Property summary

 **1** Floors

 **3** Bedrooms

 **2** Bathrooms



## Room dimensions

Floor 1

Total: 1788sqft Excluded: 388sqft

#		Dimensions	sqft	Counted as living area
1	Primary Bedroom	12'8" x 12'6"	158 sq. ft	Yes
2	Hall	21'6" x 4'2"	76 sq. ft	Yes
3	Screened Porch	16'4" x 11'6"	188 sq. ft	No
4	Bedroom	10'2" x 12'6"	126 sq. ft	Yes
5	Bath	8'6" x 7'5"	56 sq. ft	Yes
6	Kitchen	12'1" x 16'3"	171 sq. ft	Yes
7	Bedroom	11'3" x 11'9"	132 sq. ft	Yes
8	Living Room	21'7" x 15'11"	337 sq. ft	Yes
9	Laundry	5'11" x 3'5"	20 sq. ft	Yes
10	Living Room	20'3" x 12'6"	257 sq. ft	Yes
11	Pantry	7'7" x 3'5"	26 sq. ft	Yes

Home data report

**160 Old Martinsburg Rd,Shepherdstown,WV,US**

#		Dimensions	sqft	Counted as living area
12	Foyer	6'7" x 12'6"	65 sq. ft	Yes
13	Dining Area	15'3" x 12'6"	191 sq. ft	Yes
14	Bath	8'6" x 4'9"	40 sq. ft	Yes
15	Storage	21'7" x 9'3"	200 sq. ft	No

## 1 Floor 1 - Primary Bedroom



Dimensions: 12'8" x 12'6"  
Area: 158 sq. ft  
Counted as living area: Yes

Heated: Yes  
Finished: Yes  
Enclosed: Yes  
Contiguous: Yes  
Permitted: Yes  
Wet space: No  
Addition: No  
Conversion: No

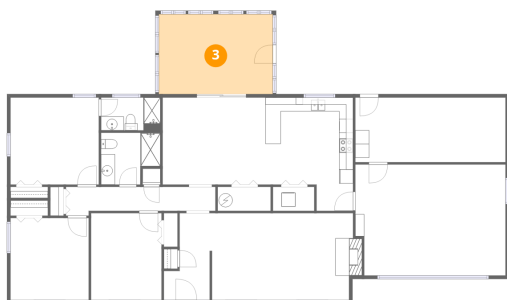
## 2 Floor 1 - Hall



Dimensions: 21'6" x 4'2"  
Area: 76 sq. ft  
Counted as living area: Yes

Heated: Yes  
Finished: Yes  
Enclosed: Yes  
Contiguous: Yes  
Permitted: Yes  
Wet space: No  
Addition: No  
Conversion: No

### 3 Floor 1 - Screened Porch



Dimensions: 16'4" x 11'6"  
Area: 188 sq. ft  
Counted as living area: No

Heated: No  
Finished: No  
Enclosed: No  
Contiguous: Yes  
Permitted: Yes  
Wet space: No  
Addition: No  
Conversion: No

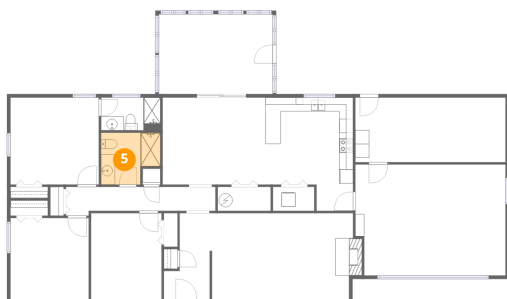
### 4 Floor 1 - Bedroom



Dimensions: 10'2" x 12'6"  
Area: 126 sq. ft  
Counted as living area: Yes

Heated: Yes  
Finished: Yes  
Enclosed: Yes  
Contiguous: Yes  
Permitted: Yes  
Wet space: No  
Addition: No  
Conversion: No

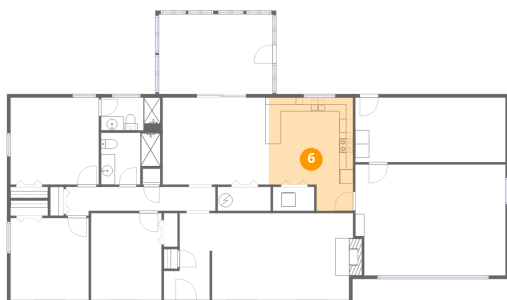
### 5 Floor 1 - Bath



Dimensions: 8'6" x 7'5"  
Area: 56 sq. ft  
Counted as living area: Yes

Heated: Yes  
Finished: Yes  
Enclosed: Yes  
Contiguous: Yes  
Permitted: Yes  
Wet space: Yes  
Addition: No  
Conversion: No

### 6 Floor 1 - Kitchen



Dimensions: 12'1" x 16'3"  
Area: 171 sq. ft  
Counted as living area: Yes

Heated: Yes  
Finished: Yes  
Enclosed: Yes  
Contiguous: Yes  
Permitted: Yes  
Wet space: No  
Addition: No  
Conversion: No

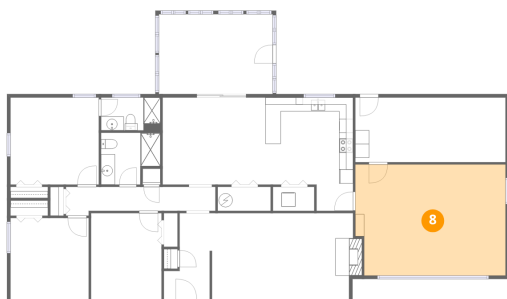
### 7 Floor 1 - Bedroom



Dimensions: 11'3" x 11'9"  
Area: 132 sq. ft  
Counted as living area: Yes

Heated: Yes  
Finished: Yes  
Enclosed: Yes  
Contiguous: Yes  
Permitted: Yes  
Wet space: No  
Addition: No  
Conversion: No

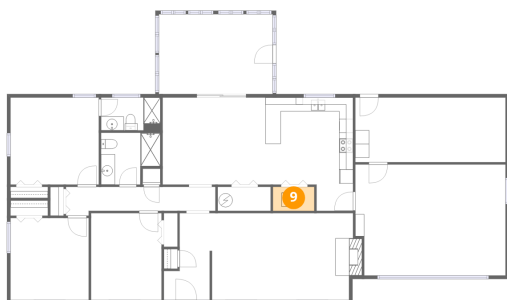
### 8 Floor 1 - Living Room



Dimensions: 21'7" x 15'11"  
Area: 337 sq. ft  
Counted as living area: Yes

Heated: Yes  
Finished: Yes  
Enclosed: Yes  
Contiguous: Yes  
Permitted: Yes  
Wet space: No  
Addition: No  
Conversion: No

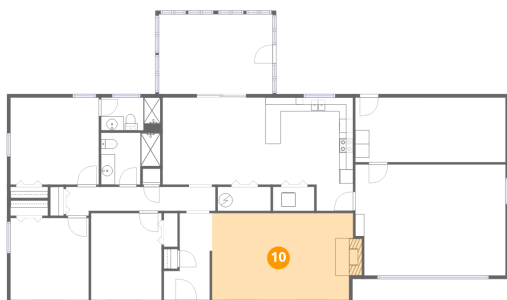
### 9 Floor 1 - Laundry



Dimensions: 5'11" x 3'5"  
Area: 20 sq. ft  
Counted as living area: Yes

Heated: Yes  
Finished: Yes  
Enclosed: Yes  
Contiguous: Yes  
Permitted: Yes  
Wet space: No  
Addition: No  
Conversion: No

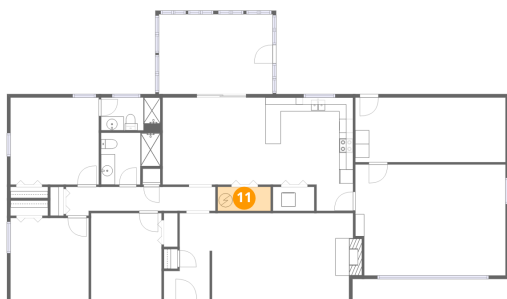
### 10 Floor 1 - Living Room



Dimensions: 20'3" x 12'6"  
Area: 257 sq. ft  
Counted as living area: Yes

Heated: Yes  
Finished: Yes  
Enclosed: Yes  
Contiguous: Yes  
Permitted: Yes  
Wet space: No  
Addition: No  
Conversion: No

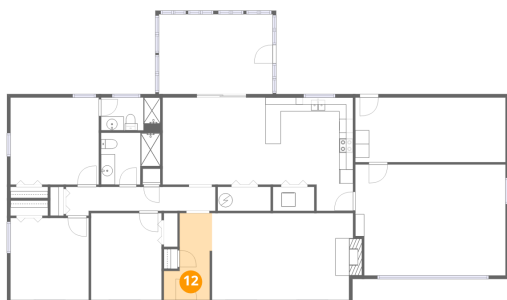
### 11 Floor 1 - Pantry



Dimensions: 7'7" x 3'5"  
Area: 26 sq. ft  
Counted as living area: Yes

Heated: Yes  
Finished: Yes  
Enclosed: Yes  
Contiguous: Yes  
Permitted: Yes  
Wet space: No  
Addition: No  
Conversion: No

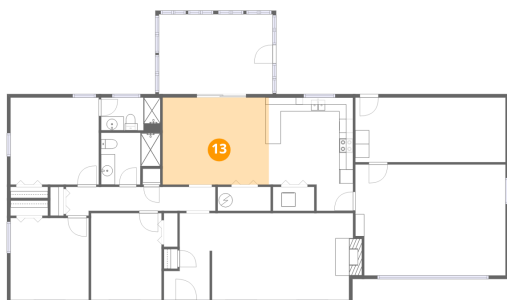
### 12 Floor 1 - Foyer



Dimensions: 6'7" x 12'6"  
Area: 65 sq. ft  
Counted as living area: Yes

Heated: Yes  
Finished: Yes  
Enclosed: Yes  
Contiguous: Yes  
Permitted: Yes  
Wet space: No  
Addition: No  
Conversion: No

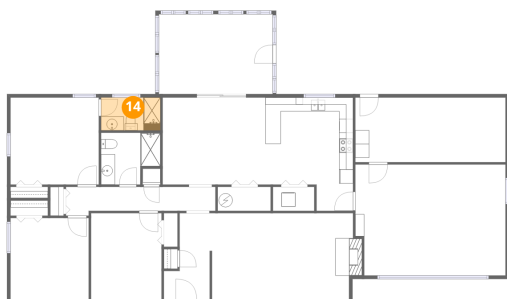
### 13 Floor 1 - Dining Area



Dimensions: 15'3" x 12'6"  
Area: 191 sq. ft  
Counted as living area: Yes

Heated: Yes  
Finished: Yes  
Enclosed: Yes  
Contiguous: Yes  
Permitted: Yes  
Wet space: No  
Addition: No  
Conversion: No

### 14 Floor 1 - Bath



Dimensions: 8'6" x 4'9"  
Area: 40 sq. ft  
Counted as living area: Yes

Heated: Yes  
Finished: Yes  
Enclosed: Yes  
Contiguous: Yes  
Permitted: Yes  
Wet space: Yes  
Addition: No  
Conversion: No

**15** Floor 1 - Storage

---



Dimensions: 21'7" x 9'3"  
Area: 200 sq. ft  
Counted as living area: No

Heated: No  
Finished: No  
Enclosed: No  
Contiguous: Yes  
Permitted: Yes  
Wet space: No  
Addition: No  
Conversion: No