

Home report

1003 Markwick Crescent, Orléans Avalon - Notting Gate -  
Fallingbrook - Gardenway South, Orléans, Ontario, Canada, K4A



**Total Area: 2206 sq. ft**  
Below Ground: 502 sq. ft, Floor 2: 902 sq. ft, Floor 3: 802 sq. ft  
Excluded: Laundry 127 sq. ft, Utility 95 sq. ft, Storage 179 sq. ft, Garage 361 sq. ft, Walls: 214 sq. ft

Property summary

 **3** Floors

 **3** Bedrooms

 **2** Bathrooms

Home report

**1003 Markwick Crescent, Orléans Avalon - Notting Gate -  
Fallingbrook - Gardenway South, Orléans, Ontario, Canada, K4A**



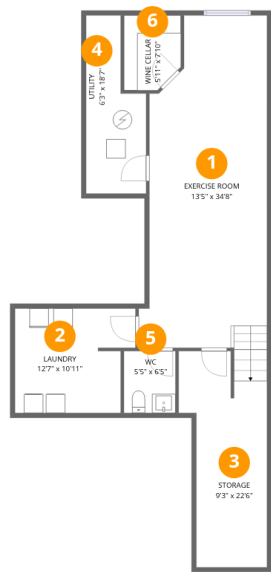
**2**  
Half baths



**1**  
Garages

Home report

1003 Markwick Crescent, Orléans Avalon - Notting Gate -  
Fallingbrook - Gardenway South, Orléans, Ontario, Canada, K4A



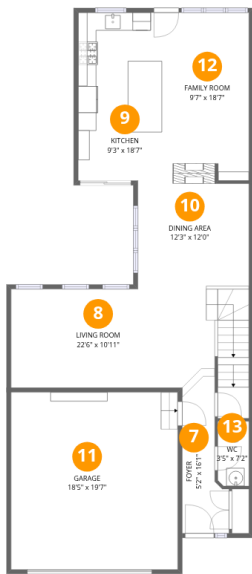
Room dimensions

Floor 1 Below ground Total:502sqft   Excluded: 401sqft

#		Max Dimensions	sqft	Included
1	Exercise Room	13'5" x 34'8"	404 sq. ft	Yes
2	Laundry	12'7" x 10'11"	126 sq. ft	No
3	Storage	9'3" x 22'6"	177 sq. ft	No
4	Utility	6'3" x 18'7"	95 sq. ft	No
5	WC	5'5" x 6'5"	35 sq. ft	Yes
6	Wine Cellar	5'11" x 7'10"	43 sq. ft	Yes

Home report

1003 Markwick Crescent, Orléans Avalon - Notting Gate -  
Fallingbrook - Gardenway South, Orléans, Ontario, Canada, K4A



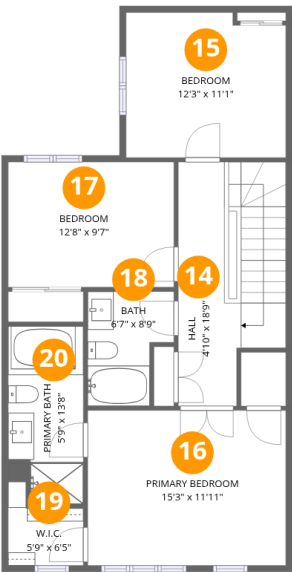
Room dimensions

Floor 2 Total:902sqft    Excluded: 361sqft

#		Max Dimensions	sqft	Included
7	Foyer	5'2" x 16'1"	66 sq. ft	Yes
8	Living Room	22'6" x 10'11"	297 sq. ft	Yes
9	Kitchen	9'3" x 18'7"	172 sq. ft	Yes
10	Dining Area	12'3" x 12'0"	146 sq. ft	Yes
11	Garage	18'5" x 19'7"	361 sq. ft	No
12	Family Room	9'7" x 18'7"	178 sq. ft	Yes
13	WC	3'5" x 7'2"	24 sq. ft	Yes

Home report

1003 Markwick Crescent, Orléans Avalon - Notting Gate -  
Fallingbrook - Gardenway South, Orléans, Ontario, Canada, K4A



Room dimensions

Floor 3 Total:802sqft   Excluded: 0sqft

#		Max Dimensions	sqft	Included
14	Hall	4'10" x 18'9"	138 sq. ft	Yes
15	Bedroom	12'3" x 11'1"	133 sq. ft	Yes
16	Primary Bedroom	15'3" x 11'11"	181 sq. ft	Yes
17	Bedroom	12'8" x 9'7"	122 sq. ft	Yes
18	Bath	6'7" x 8'9"	49 sq. ft	Yes
19	W.I.C.	5'9" x 6'5"	30 sq. ft	Yes
20	Primary Bath	5'9" x 13'8"	73 sq. ft	Yes

1003 Markwick Crescent, Orléans Avalon - Notting Gate -  
Fallingbrook - Gardenway South, Orléans, Ontario, Canada, K4A

1 Floor 1 - Exercise Room



Max Dimensions: 13'5" x 34'8"  
Calculated Area: 404 sq. ft  
Included: No

Heated: Yes  
Finished: Yes  
Enclosed: Yes  
Contiguous: No  
Permitted: Yes  
Wet space: No  
Addition: No  
Conversion: No

2 Floor 1 - Laundry

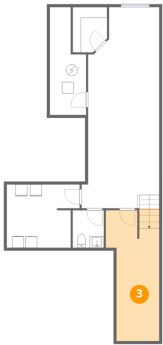


Max Dimensions: 12'7" x 10'11"  
Calculated Area: 126 sq. ft  
Included: No

Heated: Yes  
Finished: No  
Enclosed: Yes  
Contiguous: Yes  
Permitted: Yes  
Wet space: No  
Addition: No  
Conversion: No

1003 Markwick Crescent, Orléans Avalon - Notting Gate -  
Fallingbrook - Gardenway South, Orléans, Ontario, Canada, K4A

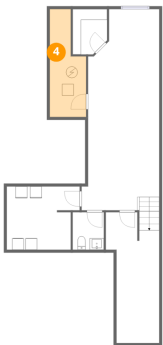
3 Floor 1 - Storage



Max Dimensions: 9'3" x 22'6"  
Calculated Area: 177 sq. ft  
Included: No

Heated: No  
Finished: No  
Enclosed: No  
Contiguous: Yes  
Permitted: Yes  
Wet space: No  
Addition: No  
Conversion: No

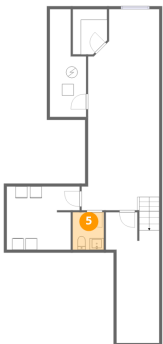
4 Floor 1 - Utility



Max Dimensions: 6'3" x 18'7"  
Calculated Area: 95 sq. ft  
Included: No

Heated: Yes  
Finished: No  
Enclosed: Yes  
Contiguous: Yes  
Permitted: Yes  
Wet space: No  
Addition: No  
Conversion: No

5 Floor 1 - WC



Max Dimensions: 5'5" x 6'5"  
Calculated Area: 35 sq. ft  
Included: No

Heated: Yes  
Finished: Yes  
Enclosed: Yes  
Contiguous: No  
Permitted: Yes  
Wet space: Yes  
Addition: No  
Conversion: No

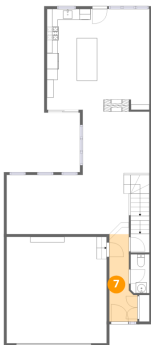
6 Floor 1 - Wine Cellar



Max Dimensions: 5'11" x 7'10"  
Calculated Area: 43 sq. ft  
Included: No

Heated: No  
Finished: Yes  
Enclosed: Yes  
Contiguous: Yes  
Permitted: Yes  
Wet space: No  
Addition: No  
Conversion: No

7 Floor 2 - Foyer



Max Dimensions: 5'2" x 16'1"  
Calculated Area: 66 sq. ft  
Included: Yes

Heated: Yes  
Finished: Yes  
Enclosed: Yes  
Contiguous: Yes  
Permitted: Yes  
Wet space: No  
Addition: No  
Conversion: No

8 Floor 2 - Living Room



Max Dimensions: 22'6" x 10'11"  
Calculated Area: 297 sq. ft  
Included: Yes

Heated: Yes  
Finished: Yes  
Enclosed: Yes  
Contiguous: Yes  
Permitted: Yes  
Wet space: No  
Addition: No  
Conversion: No



9 Floor 2 - Kitchen



Max Dimensions: 9'3" x 18'7"  
Calculated Area: 172 sq. ft  
Included: Yes

Heated: Yes  
Finished: Yes  
Enclosed: Yes  
Contiguous: Yes  
Permitted: Yes  
Wet space: No  
Addition: No  
Conversion: No

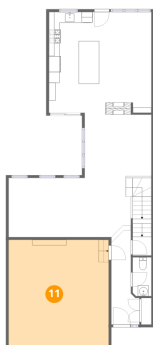
10 Floor 2 - Dining Area



Max Dimensions: 12'3" x 12'0"  
Calculated Area: 146 sq. ft  
Included: Yes

Heated: Yes  
Finished: Yes  
Enclosed: Yes  
Contiguous: Yes  
Permitted: Yes  
Wet space: No  
Addition: No  
Conversion: No

11 Floor 2 - Garage



Max Dimensions: 18'5" x 19'7"  
Calculated Area: 361 sq. ft  
Included: No

Heated: No  
Finished: No  
Enclosed: Yes  
Contiguous: Yes  
Permitted: Yes  
Wet space: No  
Addition: No  
Conversion: No

12 Floor 2 - Family Room



Max Dimensions: 9'7" x 18'7"  
Calculated Area: 178 sq. ft  
Included: Yes

Heated: Yes  
Finished: Yes  
Enclosed: Yes  
Contiguous: Yes  
Permitted: Yes  
Wet space: No  
Addition: No  
Conversion: No

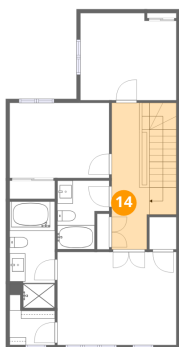
13 Floor 2 - WC



Max Dimensions: 3'5" x 7'2"  
Calculated Area: 24 sq. ft  
Included: Yes

Heated: Yes  
Finished: Yes  
Enclosed: Yes  
Contiguous: Yes  
Permitted: Yes  
Wet space: Yes  
Addition: No  
Conversion: No

14 Floor 3 - Hall

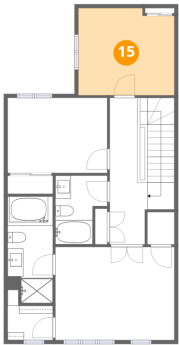


Max Dimensions: 4'10" x 18'9"  
Calculated Area: 138 sq. ft  
Included: Yes

Heated: Yes  
Finished: Yes  
Enclosed: Yes  
Contiguous: Yes  
Permitted: Yes  
Wet space: No  
Addition: No  
Conversion: No

1003 Markwick Crescent, Orléans Avalon - Notting Gate -  
Fallingbrook - Gardenway South, Orléans, Ontario, Canada, K4A

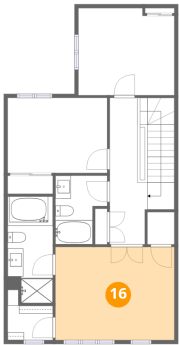
15 Floor 3 - Bedroom



Max Dimensions: 12'3" x 11'1"  
Calculated Area: 133 sq. ft  
Included: Yes

Heated: Yes  
Finished: Yes  
Enclosed: Yes  
Contiguous: Yes  
Permitted: Yes  
Wet space: No  
Addition: No  
Conversion: No

16 Floor 3 - Primary Bedroom



Max Dimensions: 15'3" x 11'11"  
Calculated Area: 181 sq. ft  
Included: Yes

Heated: Yes  
Finished: Yes  
Enclosed: Yes  
Contiguous: Yes  
Permitted: Yes  
Wet space: No  
Addition: No  
Conversion: No

17 Floor 3 - Bedroom



Max Dimensions: 12'8" x 9'7"  
Calculated Area: 122 sq. ft  
Included: Yes

Heated: Yes  
Finished: Yes  
Enclosed: Yes  
Contiguous: Yes  
Permitted: Yes  
Wet space: No  
Addition: No  
Conversion: No

18 Floor 3 - Bath



Max Dimensions: 6'7" x 8'9"  
Calculated Area: 49 sq. ft  
Included: Yes

Heated: Yes  
Finished: Yes  
Enclosed: Yes  
Contiguous: Yes  
Permitted: Yes  
Wet space: Yes  
Addition: No  
Conversion: No

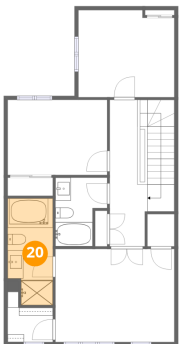
19 Floor 3 - W.I.C.



Max Dimensions: 5'9" x 6'5"  
Calculated Area: 30 sq. ft  
Included: Yes

Heated: Yes  
Finished: Yes  
Enclosed: Yes  
Contiguous: Yes  
Permitted: Yes  
Wet space: No  
Addition: No  
Conversion: No

20 Floor 3 - Primary Bath



Max Dimensions: 5'9" x 13'8"  
Calculated Area: 73 sq. ft  
Included: Yes

Heated: Yes  
Finished: Yes  
Enclosed: Yes  
Contiguous: Yes  
Permitted: Yes  
Wet space: Yes  
Addition: No  
Conversion: No