

Home report

5440 Ridgelea Estates Drive, Roanoke, Roanoke County,  
Virginia, United States, 24018




Total Area: 5590 sq. ft

Floor 1: 1935 sq. ft, Floor 2: 2564 sq. ft, Floor 3: 1091 sq. ft

Excluded: Workshop 100 sq. ft, Storage 710 sq. ft, Patio 873 sq. ft, Basement 582 sq. ft,  
Garage 810 sq. ft, Screened porch 396 sq. ft, Porch 294 sq. ft, Open to below 528 sq. ft,  
Walls: 442 sq. ft

Property summary

 **3** Floors

 **5** Bedrooms

 **4** Bathrooms

Home report

**5440 Ridgelea Estates Drive, Roanoke, Roanoke County,  
Virginia, United States, 24018**



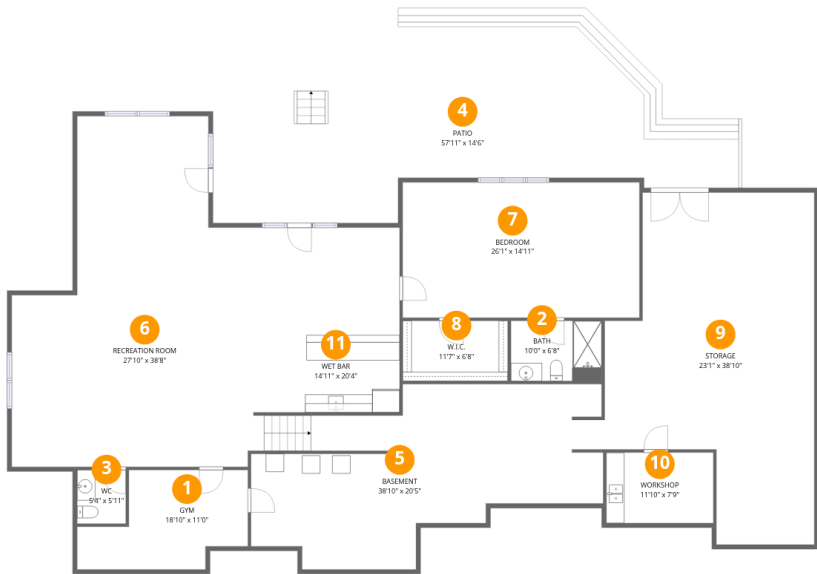
**2**  
Half baths



**1**  
Garages

Home report

5440 Ridgelea Estates Drive, Roanoke, Roanoke County,  
Virginia, United States, 24018



Room dimensions

Floor 1 Total:1935sqft Excluded: 2265sqft

#		Max Dimensions	sqft	Included
1	Gym	18'10" x 11'0"	159 sq. ft	Yes
2	Bath	10'0" x 6'8"	66 sq. ft	Yes
3	WC	5'4" x 5'11"	32 sq. ft	Yes
4	Patio	57'11" x 14'6"	873 sq. ft	No
5	Basement	38'10" x 20'5"	575 sq. ft	No
6	Recreation Room	27'10" x 38'8"	855 sq. ft	Yes
7	Bedroom	26'1" x 14'11"	389 sq. ft	Yes
8	W.I.C.	11'7" x 6'8"	77 sq. ft	Yes
9	Storage	23'1" x 38'10"	709 sq. ft	No
10	Workshop	11'10" x 7'9"	92 sq. ft	No
11	Wet Bar	14'11" x 20'4"	304 sq. ft	Yes

Home report

5440 Ridgelea Estates Drive, Roanoke, Roanoke County,  
Virginia, United States, 24018



Room dimensions

Floor 2Total:2564sqft   Excluded: 1500sqft

#		Max Dimensions	sqft	Included
12	WC	6'10" x 6'6"	39 sq. ft	Yes
13	Dining Area	13'3" x 13'8"	187 sq. ft	Yes
14	W.I.C.	6'10" x 15'9"	96 sq. ft	Yes
15	Living Room	20'0" x 16'2"	323 sq. ft	Yes
16	WC	3'11" x 5'11"	22 sq. ft	Yes
17	Hall	20'0" x 8'6"	159 sq. ft	Yes
18	Hall	6'9" x 7'8"	51 sq. ft	Yes
19	Hall	5'2" x 4'9"	25 sq. ft	Yes
20	Family Room	17'11" x 15'5"	276 sq. ft	Yes
21	Office	15'3" x 11'1"	176 sq. ft	Yes
22	Primary Bedroom	16'11" x 19'8"	308 sq. ft	Yes

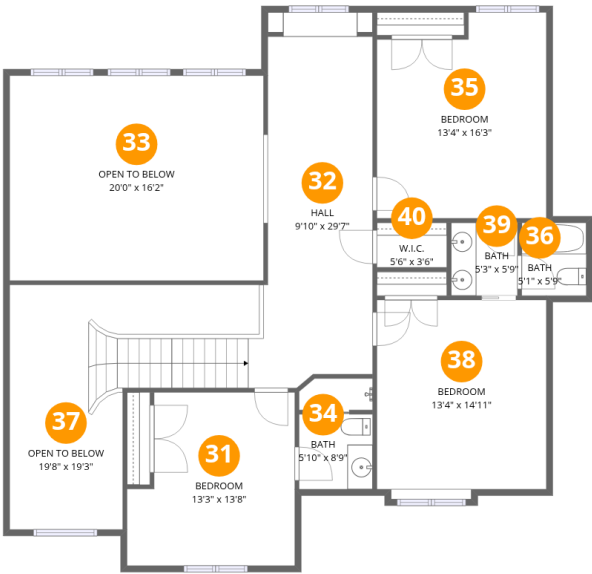
## Home report

**5440 Ridgelea Estates Drive, Roanoke, Roanoke County,  
Virginia, United States, 24018**

#		Max Dimensions	sqft	Included
23	Primary Bath	12'10" x 19'5"	199 sq. ft	Yes
24	Foyer	9'3" x 10'10"	100 sq. ft	Yes
25	Porch	31'2" x 12'9"	294 sq. ft	No
26	Kitchen	21'1" x 20'0"	300 sq. ft	Yes
27	Screened Porch	26'1" x 16'2"	396 sq. ft	No
28	Laundry	6'3" x 9'7"	60 sq. ft	Yes
29	Breakfast Nook	8'2" x 12'8"	104 sq. ft	Yes
30	Garage	25'3" x 38'10"	810 sq. ft	No

Home report

5440 Ridgelea Estates Drive, Roanoke, Roanoke County,  
Virginia, United States, 24018



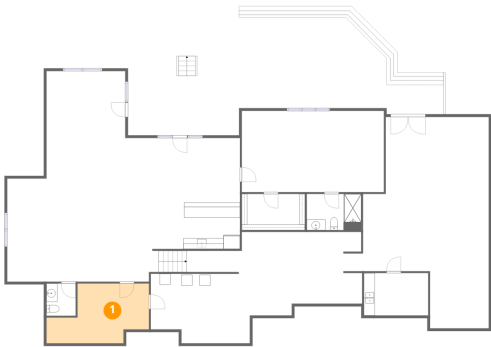
Room dimensions

Floor 3 Total:1091sqft Excluded: 528sqft

#		Max Dimensions	sqft	Included
31	Bedroom	13'3" x 13'8"	164 sq. ft	Yes
32	Hall	9'10" x 29'7"	306 sq. ft	Yes
33	Open To Below	20'0" x 16'2"	323 sq. ft	No
34	Bath	5'10" x 8'9"	49 sq. ft	Yes
35	Bedroom	13'4" x 16'3"	201 sq. ft	Yes
36	Bath	5'1" x 5'9"	29 sq. ft	Yes
37	Open To Below	19'8" x 19'3"	198 sq. ft	No
38	Bedroom	13'4" x 14'11"	204 sq. ft	Yes
39	Bath	5'3" x 5'9"	30 sq. ft	Yes
40	W.I.C.	5'6" x 3'6"	19 sq. ft	Yes

5440 Ridgelea Estates Drive, Roanoke, Roanoke County,  
Virginia, United States, 24018

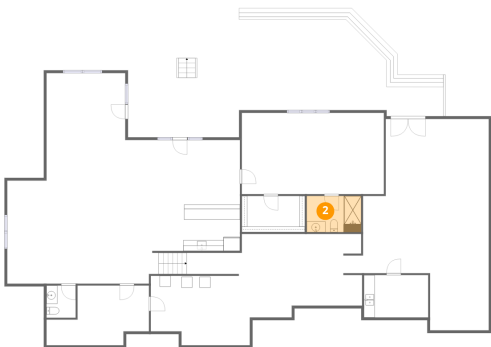
1 Floor 1 - Gym



Max Dimensions: 18'10" x 11'0"  
Calculated Area: 159 sq. ft  
Included: Yes

Heated: Yes  
Finished: Yes  
Enclosed: Yes  
Contiguous: Yes  
Permitted: Yes  
Wet space: No  
Addition: No  
Conversion: No

2 Floor 1 - Bath

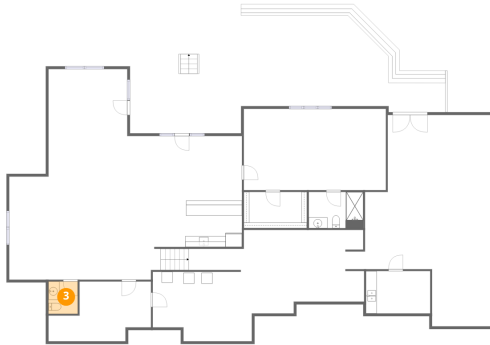


Max Dimensions: 10'0" x 6'8"  
Calculated Area: 66 sq. ft  
Included: Yes

Heated: Yes  
Finished: Yes  
Enclosed: Yes  
Contiguous: Yes  
Permitted: Yes  
Wet space: Yes  
Addition: No  
Conversion: No

5440 Ridgelea Estates Drive, Roanoke, Roanoke County,  
Virginia, United States, 24018

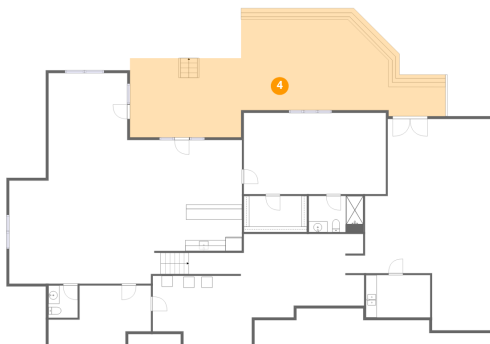
### 3 Floor 1 - WC



Max Dimensions: 5'4" x 5'11"  
Calculated Area: 32 sq. ft  
Included: Yes

Heated: Yes  
Finished: Yes  
Enclosed: Yes  
Contiguous: Yes  
Permitted: Yes  
Wet space: Yes  
Addition: No  
Conversion: No

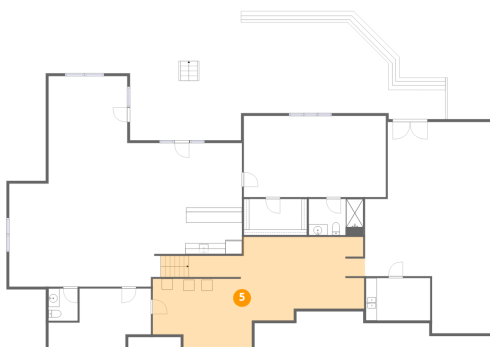
### 4 Floor 1 - Patio



Max Dimensions: 57'11" x 14'6"  
Calculated Area: 873 sq. ft  
Included: No

Heated: No  
Finished: No  
Enclosed: No  
Contiguous: Yes  
Permitted: Yes  
Wet space: No  
Addition: No  
Conversion: No

### 5 Floor 1 - Basement



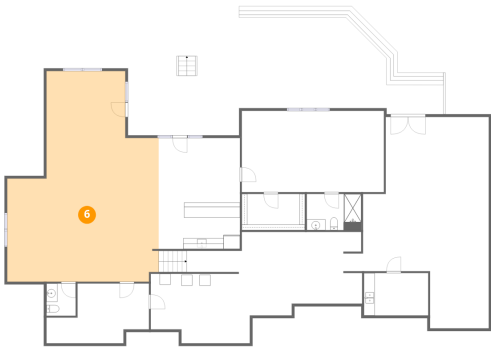
Max Dimensions: 38'10" x 20'5"  
Calculated Area: 575 sq. ft  
Included: No

Heated: Yes  
Finished: No  
Enclosed: Yes  
Contiguous: Yes  
Permitted: Yes  
Wet space: No  
Addition: No  
Conversion: No



5440 Ridgelea Estates Drive, Roanoke, Roanoke County,  
Virginia, United States, 24018

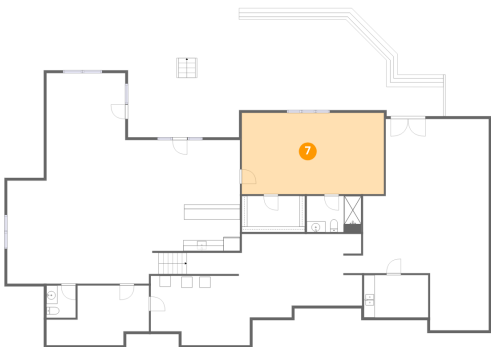
6 Floor 1 - Recreation Room



Max Dimensions: 27'10" x 38'8"  
Calculated Area: 855 sq. ft  
Included: Yes

Heated: Yes  
Finished: Yes  
Enclosed: Yes  
Contiguous: Yes  
Permitted: Yes  
Wet space: No  
Addition: No  
Conversion: No

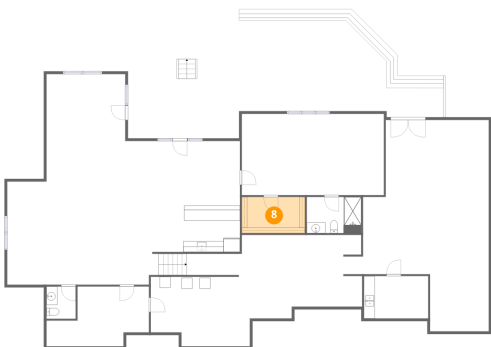
7 Floor 1 - Bedroom



Max Dimensions: 26'1" x 14'11"  
Calculated Area: 389 sq. ft  
Included: Yes

Heated: Yes  
Finished: Yes  
Enclosed: Yes  
Contiguous: Yes  
Permitted: Yes  
Wet space: No  
Addition: No  
Conversion: No

8 Floor 1 - W.I.C.

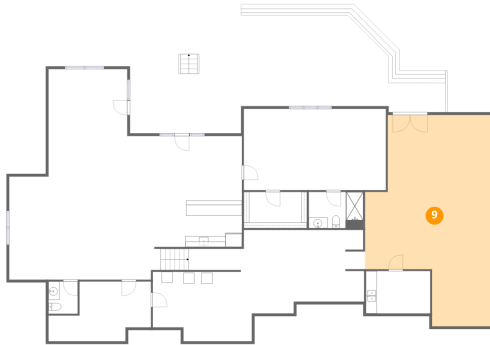


Max Dimensions: 11'7" x 6'8"  
Calculated Area: 77 sq. ft  
Included: Yes

Heated: Yes  
Finished: Yes  
Enclosed: Yes  
Contiguous: Yes  
Permitted: Yes  
Wet space: No  
Addition: No  
Conversion: No

5440 Ridgelea Estates Drive, Roanoke, Roanoke County,  
Virginia, United States, 24018

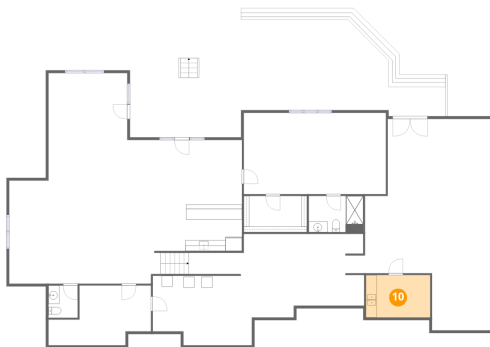
## 9 Floor 1 - Storage



Max Dimensions: 23'1" x 38'10"  
Calculated Area: 709 sq. ft  
Included: No

Heated: No  
Finished: No  
Enclosed: No  
Contiguous: Yes  
Permitted: Yes  
Wet space: No  
Addition: No  
Conversion: No

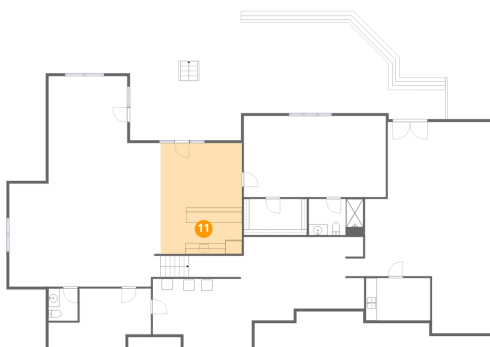
## 10 Floor 1 - Workshop



Max Dimensions: 11'10" x 7'9"  
Calculated Area: 92 sq. ft  
Included: No

Heated: No  
Finished: No  
Enclosed: Yes  
Contiguous: No  
Permitted: Yes  
Wet space: No  
Addition: No  
Conversion: No

## 11 Floor 1 - Wet Bar



Max Dimensions: 14'11" x 20'4"  
Calculated Area: 304 sq. ft  
Included: Yes

Heated: Yes  
Finished: Yes  
Enclosed: Yes  
Contiguous: Yes  
Permitted: Yes  
Wet space: No  
Addition: No  
Conversion: No

5440 Ridgelea Estates Drive, Roanoke, Roanoke County,  
Virginia, United States, 24018

## 12 Floor 2 - WC



Max Dimensions: 6'10" x 6'6"  
Calculated Area: 39 sq. ft  
Included: Yes

Heated: Yes  
Finished: Yes  
Enclosed: Yes  
Contiguous: Yes  
Permitted: Yes  
Wet space: Yes  
Addition: No  
Conversion: No

## 13 Floor 2 - Dining Area



Max Dimensions: 13'3" x 13'8"  
Calculated Area: 187 sq. ft  
Included: Yes

Heated: Yes  
Finished: Yes  
Enclosed: Yes  
Contiguous: Yes  
Permitted: Yes  
Wet space: No  
Addition: No  
Conversion: No

## 14 Floor 2 - W.I.C.

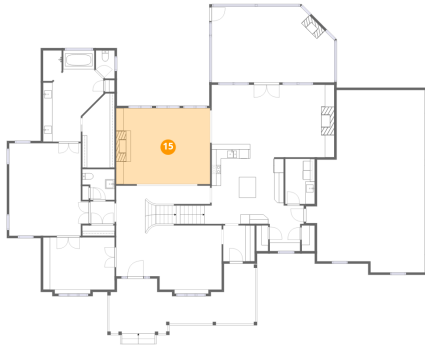


Max Dimensions: 6'10" x 15'9"  
Calculated Area: 96 sq. ft  
Included: Yes

Heated: Yes  
Finished: Yes  
Enclosed: Yes  
Contiguous: Yes  
Permitted: Yes  
Wet space: No  
Addition: No  
Conversion: No

5440 Ridgelea Estates Drive, Roanoke, Roanoke County,  
Virginia, United States, 24018

## 15 Floor 2 - Living Room



Max Dimensions: 20'0" x 16'2"  
Calculated Area: 323 sq. ft  
Included: Yes

Heated: Yes  
Finished: Yes  
Enclosed: Yes  
Contiguous: Yes  
Permitted: Yes  
Wet space: No  
Addition: No  
Conversion: No

## 16 Floor 2 - WC



Max Dimensions: 3'11" x 5'11"  
Calculated Area: 22 sq. ft  
Included: Yes

Heated: Yes  
Finished: Yes  
Enclosed: Yes  
Contiguous: Yes  
Permitted: Yes  
Wet space: Yes  
Addition: No  
Conversion: No

## 17 Floor 2 - Hall



Max Dimensions: 20'0" x 8'6"  
Calculated Area: 159 sq. ft  
Included: Yes

Heated: Yes  
Finished: Yes  
Enclosed: Yes  
Contiguous: Yes  
Permitted: Yes  
Wet space: No  
Addition: No  
Conversion: No

5440 Ridgelea Estates Drive, Roanoke, Roanoke County,  
Virginia, United States, 24018

### 18 Floor 2 - Hall



Max Dimensions: 6'9" x 7'8"  
Calculated Area: 51 sq. ft  
Included: Yes

Heated: Yes  
Finished: Yes  
Enclosed: Yes  
Contiguous: Yes  
Permitted: Yes  
Wet space: No  
Addition: No  
Conversion: No

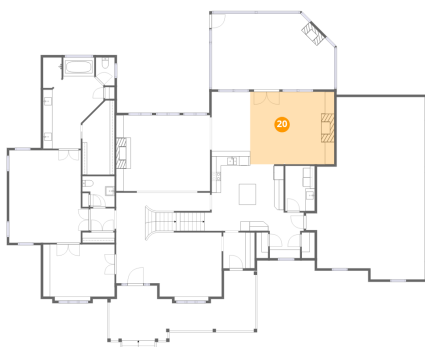
### 19 Floor 2 - Hall



Max Dimensions: 5'2" x 4'9"  
Calculated Area: 25 sq. ft  
Included: Yes

Heated: Yes  
Finished: Yes  
Enclosed: Yes  
Contiguous: Yes  
Permitted: Yes  
Wet space: No  
Addition: No  
Conversion: No

### 20 Floor 2 - Family Room



Max Dimensions: 17'11" x 15'5"  
Calculated Area: 276 sq. ft  
Included: Yes

Heated: Yes  
Finished: Yes  
Enclosed: Yes  
Contiguous: Yes  
Permitted: Yes  
Wet space: No  
Addition: No  
Conversion: No

5440 Ridgelea Estates Drive, Roanoke, Roanoke County,  
Virginia, United States, 24018

## 21 Floor 2 - Office



Max Dimensions: 15'3" x 11'1"  
Calculated Area: 176 sq. ft  
Included: Yes

Heated: Yes  
Finished: Yes  
Enclosed: Yes  
Contiguous: Yes  
Permitted: Yes  
Wet space: No  
Addition: No  
Conversion: No

## 22 Floor 2 - Primary Bedroom



Max Dimensions: 16'11" x 19'8"  
Calculated Area: 308 sq. ft  
Included: Yes

Heated: Yes  
Finished: Yes  
Enclosed: Yes  
Contiguous: Yes  
Permitted: Yes  
Wet space: No  
Addition: No  
Conversion: No

## 23 Floor 2 - Primary Bath



Max Dimensions: 12'10" x 19'5"  
Calculated Area: 199 sq. ft  
Included: Yes

Heated: Yes  
Finished: Yes  
Enclosed: Yes  
Contiguous: Yes  
Permitted: Yes  
Wet space: Yes  
Addition: No  
Conversion: No

5440 Ridgelea Estates Drive, Roanoke, Roanoke County,  
Virginia, United States, 24018

## 24 Floor 2 - Foyer



Max Dimensions: 9'3" x  
10'10"  
Calculated Area: 100 sq. ft  
Included: Yes

Heated: Yes  
Finished: Yes  
Enclosed: Yes  
Contiguous:  
Yes  
Permitted: Yes  
Wet space: No  
Addition: No  
Conversion: No

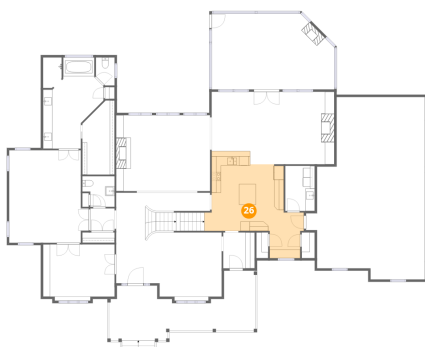
## 25 Floor 2 - Porch



Max Dimensions: 31'2" x  
12'9"  
Calculated Area: 294 sq. ft  
Included: No

Heated: No  
Finished: No  
Enclosed: No  
Contiguous:  
Yes  
Permitted: Yes  
Wet space: No  
Addition: No  
Conversion: No

## 26 Floor 2 - Kitchen



Max Dimensions: 21'1" x  
20'0"  
Calculated Area: 300 sq. ft  
Included: Yes

Heated: Yes  
Finished: Yes  
Enclosed: Yes  
Contiguous:  
Yes  
Permitted: Yes  
Wet space: No  
Addition: No  
Conversion: No

5440 Ridgelea Estates Drive, Roanoke, Roanoke County,  
Virginia, United States, 24018

## 27 Floor 2 - Screened Porch



Max Dimensions: 26'1" x 16'2"  
Calculated Area: 396 sq. ft  
Included: No

Heated: No  
Finished: No  
Enclosed: No  
Contiguous: Yes  
Permitted: Yes  
Wet space: No  
Addition: No  
Conversion: No

## 28 Floor 2 - Laundry



Max Dimensions: 6'3" x 9'7"  
Calculated Area: 60 sq. ft  
Included: Yes

Heated: Yes  
Finished: Yes  
Enclosed: Yes  
Contiguous: Yes  
Permitted: Yes  
Wet space: No  
Addition: No  
Conversion: No

## 29 Floor 2 - Breakfast Nook



Max Dimensions: 8'2" x 12'8"  
Calculated Area: 104 sq. ft  
Included: Yes

Heated: Yes  
Finished: Yes  
Enclosed: Yes  
Contiguous: Yes  
Permitted: Yes  
Wet space: No  
Addition: No  
Conversion: No



5440 Ridgelea Estates Drive, Roanoke, Roanoke County,  
Virginia, United States, 24018

30 Floor 2 - Garage



Max Dimensions: 25'3" x 38'10"  
Calculated Area: 810 sq. ft  
Included: No

Heated: No  
Finished: No  
Enclosed: Yes  
Contiguous: Yes  
Permitted: Yes  
Wet space: No  
Addition: No  
Conversion: No

31 Floor 3 - Bedroom



Max Dimensions: 13'3" x 13'8"  
Calculated Area: 164 sq. ft  
Included: Yes

Heated: Yes  
Finished: Yes  
Enclosed: Yes  
Contiguous: Yes  
Permitted: Yes  
Wet space: No  
Addition: No  
Conversion: No

32 Floor 3 - Hall



Max Dimensions: 9'10" x 29'7"  
Calculated Area: 306 sq. ft  
Included: Yes

Heated: Yes  
Finished: Yes  
Enclosed: Yes  
Contiguous: Yes  
Permitted: Yes  
Wet space: No  
Addition: No  
Conversion: No

5440 Ridgelea Estates Drive, Roanoke, Roanoke County,  
Virginia, United States, 24018

**33** Floor 3 - Open To Below



Max Dimensions: 20'0" x 16'2"  
Calculated Area: 323 sq. ft  
Included: No

Heated: No  
Finished: No  
Enclosed: No  
Contiguous: Yes  
Permitted: No  
Wet space: No  
Addition: No  
Conversion: No

**34** Floor 3 - Bath



Max Dimensions: 5'10" x 8'9"  
Calculated Area: 49 sq. ft  
Included: Yes

Heated: Yes  
Finished: Yes  
Enclosed: Yes  
Contiguous: Yes  
Permitted: Yes  
Wet space: Yes  
Addition: No  
Conversion: No

**35** Floor 3 - Bedroom



Max Dimensions: 13'4" x 16'3"  
Calculated Area: 201 sq. ft  
Included: Yes

Heated: Yes  
Finished: Yes  
Enclosed: Yes  
Contiguous: Yes  
Permitted: Yes  
Wet space: No  
Addition: No  
Conversion: No

5440 Ridgelea Estates Drive, Roanoke, Roanoke County,  
Virginia, United States, 24018

36 Floor 3 - Bath



Max Dimensions: 5'1" x 5'9"  
Calculated Area: 29 sq. ft  
Included: Yes

Heated: Yes  
Finished: Yes  
Enclosed: Yes  
Contiguous: Yes  
Permitted: Yes  
Wet space: Yes  
Addition: No  
Conversion: No

37 Floor 3 - Open To Below



Max Dimensions: 19'8" x 19'3"  
Calculated Area: 198 sq. ft  
Included: No

Heated: No  
Finished: No  
Enclosed: No  
Contiguous: Yes  
Permitted: No  
Wet space: No  
Addition: No  
Conversion: No

38 Floor 3 - Bedroom



Max Dimensions: 13'4" x 14'11"  
Calculated Area: 204 sq. ft  
Included: Yes

Heated: Yes  
Finished: Yes  
Enclosed: Yes  
Contiguous: Yes  
Permitted: Yes  
Wet space: No  
Addition: No  
Conversion: No

5440 Ridgelea Estates Drive, Roanoke, Roanoke County,  
Virginia, United States, 24018

39 Floor 3 - Bath



Max Dimensions: 5'3" x 5'9"  
Calculated Area: 30 sq. ft  
Included: Yes

Heated: Yes  
Finished: Yes  
Enclosed: Yes  
Contiguous: Yes  
Permitted: Yes  
Wet space: Yes  
Addition: No  
Conversion: No

40 Floor 3 - W.I.C.



Max Dimensions: 5'6" x 3'6"  
Calculated Area: 19 sq. ft  
Included: Yes

Heated: Yes  
Finished: Yes  
Enclosed: Yes  
Contiguous: Yes  
Permitted: Yes  
Wet space: No  
Addition: No  
Conversion: No