

# 4678 Chickasaw Rd, Memphis, TN, US



**Total Area: 2707 sq. ft**

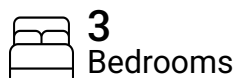
1st Floor: 2707 sq. ft

Excluded: Walls: 132 sq. ft

## Property summary



**1** Floors



**3** Bedrooms

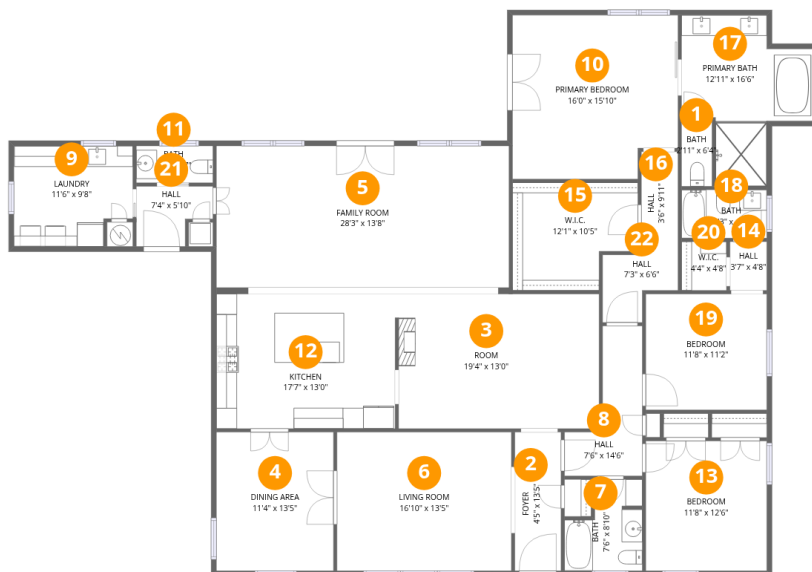


**3** Bathrooms



**1** Half baths

# 4678 Chickasaw Rd, Memphis, TN, US



## Room dimensions

Floor 1

Total: 2707 sqft Excluded: 0 sqft

#		Dimensions	sqft	Counted as living area
1	Bath	2'11" x 6'4"	19 sq. ft	Yes
2	Foyer	4'5" x 13'5"	60 sq. ft	Yes
3	Room	19'4" x 13'0"	251 sq. ft	Yes
4	Dining Area	11'4" x 13'5"	151 sq. ft	Yes
5	Family Room	28'3" x 13'8"	386 sq. ft	Yes
6	Living Room	16'10" x 13'5"	225 sq. ft	Yes
7	Bath	7'6" x 8'10"	54 sq. ft	Yes
8	Hall	7'6" x 14'6"	71 sq. ft	Yes
9	Laundry	11'6" x 9'8"	104 sq. ft	Yes
10	Primary Bedroom	16'0" x 15'10"	241 sq. ft	Yes
11	Bath	7'5" x 3'7"	26 sq. ft	Yes

# 4678 Chickasaw Rd, Memphis, TN, US

#		Dimensions	sqft	Counted as living area
12	Kitchen	17'7" x 13'0"	225 sq. ft	Yes
13	Bedroom	11'8" x 12'6"	146 sq. ft	Yes
14	Hall	3'7" x 4'8"	17 sq. ft	Yes
15	W.I.C.	12'1" x 10'5"	112 sq. ft	Yes
16	Hall	3'6" x 9'11"	35 sq. ft	Yes
17	Primary Bath	12'11" x 16'6"	147 sq. ft	Yes
18	Bath	8'3" x 4'8"	38 sq. ft	Yes
19	Bedroom	11'8" x 11'2"	131 sq. ft	Yes
20	W.I.C.	4'4" x 4'8"	20 sq. ft	Yes
21	Hall	7'4" x 5'10"	36 sq. ft	Yes
22	Hall	7'3" x 6'6"	37 sq. ft	Yes

# 4678 Chickasaw Rd, Memphis, TN, US

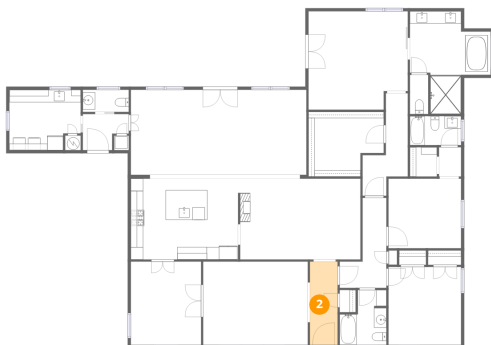
## 1 Floor 1 - Bath



Dimensions: 2'11" x 6'4"  
Area: 19 sq. ft  
Counted as living area: Yes

Heated: Yes  
Finished: Yes  
Enclosed: Yes  
Contiguous: Yes  
Permitted: Yes  
Wet space: Yes  
Addition: No  
Conversion: No

## 2 Floor 1 - Foyer



Dimensions: 4'5" x 13'5"  
Area: 60 sq. ft  
Counted as living area: Yes

Heated: Yes  
Finished: Yes  
Enclosed: Yes  
Contiguous: Yes  
Permitted: Yes  
Wet space: No  
Addition: No  
Conversion: No

# 4678 Chickasaw Rd, Memphis, TN, US

## 3 Floor 1 - Room



Dimensions: 19'4" x 13'0"  
Area: 251 sq. ft  
Counted as living area: Yes

Heated: Yes  
Finished: Yes  
Enclosed: Yes  
Contiguous: Yes  
Permitted: Yes  
Wet space: No  
Addition: No  
Conversion: No

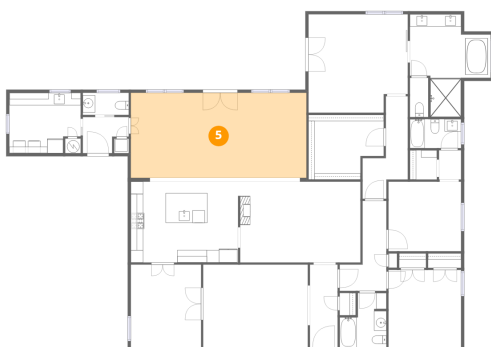
## 4 Floor 1 - Dining Area



Dimensions: 11'4" x 13'5"  
Area: 151 sq. ft  
Counted as living area: Yes

Heated: Yes  
Finished: Yes  
Enclosed: Yes  
Contiguous: Yes  
Permitted: Yes  
Wet space: No  
Addition: No  
Conversion: No

## 5 Floor 1 - Family Room

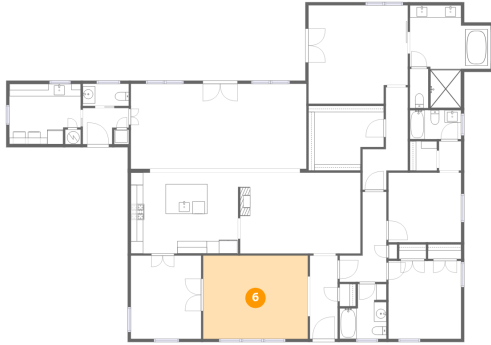


Dimensions: 28'3" x 13'8"  
Area: 386 sq. ft  
Counted as living area: Yes

Heated: Yes  
Finished: Yes  
Enclosed: Yes  
Contiguous: Yes  
Permitted: Yes  
Wet space: No  
Addition: No  
Conversion: No

# 4678 Chickasaw Rd, Memphis, TN, US

## 6 Floor 1 - Living Room



**Dimensions:** 16'10" x 13'5"  
**Area:** 225 sq. ft  
**Counted as living area:** Yes

**Heated:** Yes  
**Finished:** Yes  
**Enclosed:** Yes  
**Contiguous:** Yes  
**Permitted:** Yes  
**Wet space:** No  
**Addition:** No  
**Conversion:** No

## 7 Floor 1 - Bath



**Dimensions:** 7'6" x 8'10"  
**Area:** 54 sq. ft  
**Counted as living area:** Yes

**Heated:** Yes  
**Finished:** Yes  
**Enclosed:** Yes  
**Contiguous:** Yes  
**Permitted:** Yes  
**Wet space:** Yes  
**Addition:** No  
**Conversion:** No

## 8 Floor 1 - Hall



**Dimensions:** 7'6" x 14'6"  
**Area:** 71 sq. ft  
**Counted as living area:** Yes

**Heated:** Yes  
**Finished:** Yes  
**Enclosed:** Yes  
**Contiguous:** Yes  
**Permitted:** Yes  
**Wet space:** No  
**Addition:** No  
**Conversion:** No

# 4678 Chickasaw Rd, Memphis, TN, US

## 9 Floor 1 - Laundry



Dimensions: 11'6" x 9'8"  
Area: 104 sq. ft  
Counted as living area: Yes

Heated: Yes  
Finished: Yes  
Enclosed: Yes  
Contiguous: Yes  
Permitted: Yes  
Wet space: No  
Addition: No  
Conversion: No

## 10 Floor 1 - Primary Bedroom



Dimensions: 16'0" x 15'10"  
Area: 241 sq. ft  
Counted as living area: Yes

Heated: Yes  
Finished: Yes  
Enclosed: Yes  
Contiguous: Yes  
Permitted: Yes  
Wet space: No  
Addition: No  
Conversion: No

## 11 Floor 1 - Bath

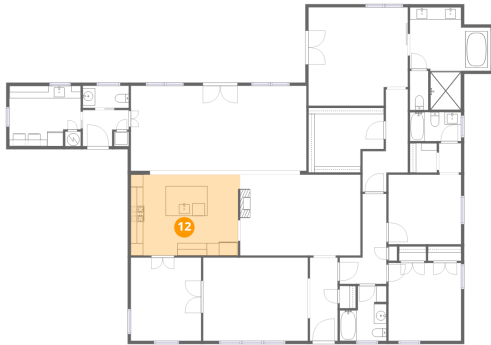


Dimensions: 7'5" x 3'7"  
Area: 26 sq. ft  
Counted as living area: Yes

Heated: Yes  
Finished: Yes  
Enclosed: Yes  
Contiguous: Yes  
Permitted: Yes  
Wet space: Yes  
Addition: No  
Conversion: No

# 4678 Chickasaw Rd, Memphis, TN, US

## 12 Floor 1 - Kitchen



Dimensions: 17'7" x 13'0"  
Area: 225 sq. ft  
Counted as living area: Yes

Heated: Yes  
Finished: Yes  
Enclosed: Yes  
Contiguous: Yes  
Permitted: Yes  
Wet space: No  
Addition: No  
Conversion: No

## 13 Floor 1 - Bedroom



Dimensions: 11'8" x 12'6"  
Area: 146 sq. ft  
Counted as living area: Yes

Heated: Yes  
Finished: Yes  
Enclosed: Yes  
Contiguous: Yes  
Permitted: Yes  
Wet space: No  
Addition: No  
Conversion: No

## 14 Floor 1 - Hall



Dimensions: 3'7" x 4'8"  
Area: 17 sq. ft  
Counted as living area: Yes

Heated: Yes  
Finished: Yes  
Enclosed: Yes  
Contiguous: Yes  
Permitted: Yes  
Wet space: No  
Addition: No  
Conversion: No

# 4678 Chickasaw Rd, Memphis, TN, US

## 15 Floor 1 - W.I.C.



Dimensions: 12'1" x 10'5"  
Area: 112 sq. ft  
Counted as living area: Yes

Heated: Yes  
Finished: Yes  
Enclosed: Yes  
Contiguous: Yes  
Permitted: Yes  
Wet space: No  
Addition: No  
Conversion: No

## 16 Floor 1 - Hall



Dimensions: 3'6" x 9'11"  
Area: 35 sq. ft  
Counted as living area: Yes

Heated: Yes  
Finished: Yes  
Enclosed: Yes  
Contiguous: Yes  
Permitted: Yes  
Wet space: No  
Addition: No  
Conversion: No

## 17 Floor 1 - Primary Bath



Dimensions: 12'11" x 16'6"  
Area: 147 sq. ft  
Counted as living area: Yes

Heated: Yes  
Finished: Yes  
Enclosed: Yes  
Contiguous: Yes  
Permitted: Yes  
Wet space: Yes  
Addition: No  
Conversion: No

# 4678 Chickasaw Rd, Memphis, TN, US

## 18 Floor 1 - Bath



Dimensions: 8'3" x 4'8"  
Area: 38 sq. ft  
Counted as living area: Yes

Heated: Yes  
Finished: Yes  
Enclosed: Yes  
Contiguous: Yes  
Permitted: Yes  
Wet space: Yes  
Addition: No  
Conversion: No

## 19 Floor 1 - Bedroom



Dimensions: 11'8" x 11'2"  
Area: 131 sq. ft  
Counted as living area: Yes

Heated: Yes  
Finished: Yes  
Enclosed: Yes  
Contiguous: Yes  
Permitted: Yes  
Wet space: No  
Addition: No  
Conversion: No

## 20 Floor 1 - W.I.C.

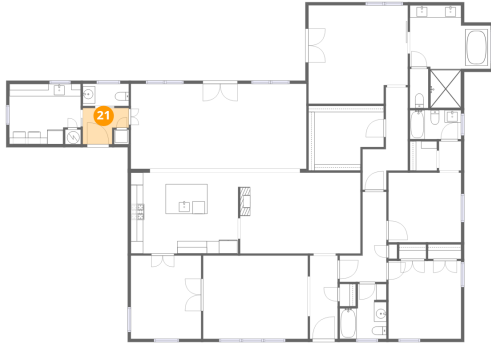


Dimensions: 4'4" x 4'8"  
Area: 20 sq. ft  
Counted as living area: Yes

Heated: Yes  
Finished: Yes  
Enclosed: Yes  
Contiguous: Yes  
Permitted: Yes  
Wet space: No  
Addition: No  
Conversion: No

# 4678 Chickasaw Rd, Memphis, TN, US

## 21 Floor 1 - Hall



Dimensions: 7'4" x 5'10"  
Area: 36 sq. ft  
Counted as living area: Yes

Heated: Yes  
Finished: Yes  
Enclosed: Yes  
Contiguous: Yes  
Permitted: Yes  
Wet space: No  
Addition: No  
Conversion: No

## 22 Floor 1 - Hall



Dimensions: 7'3" x 6'6"  
Area: 37 sq. ft  
Counted as living area: Yes

Heated: Yes  
Finished: Yes  
Enclosed: Yes  
Contiguous: Yes  
Permitted: Yes  
Wet space: No  
Addition: No  
Conversion: No