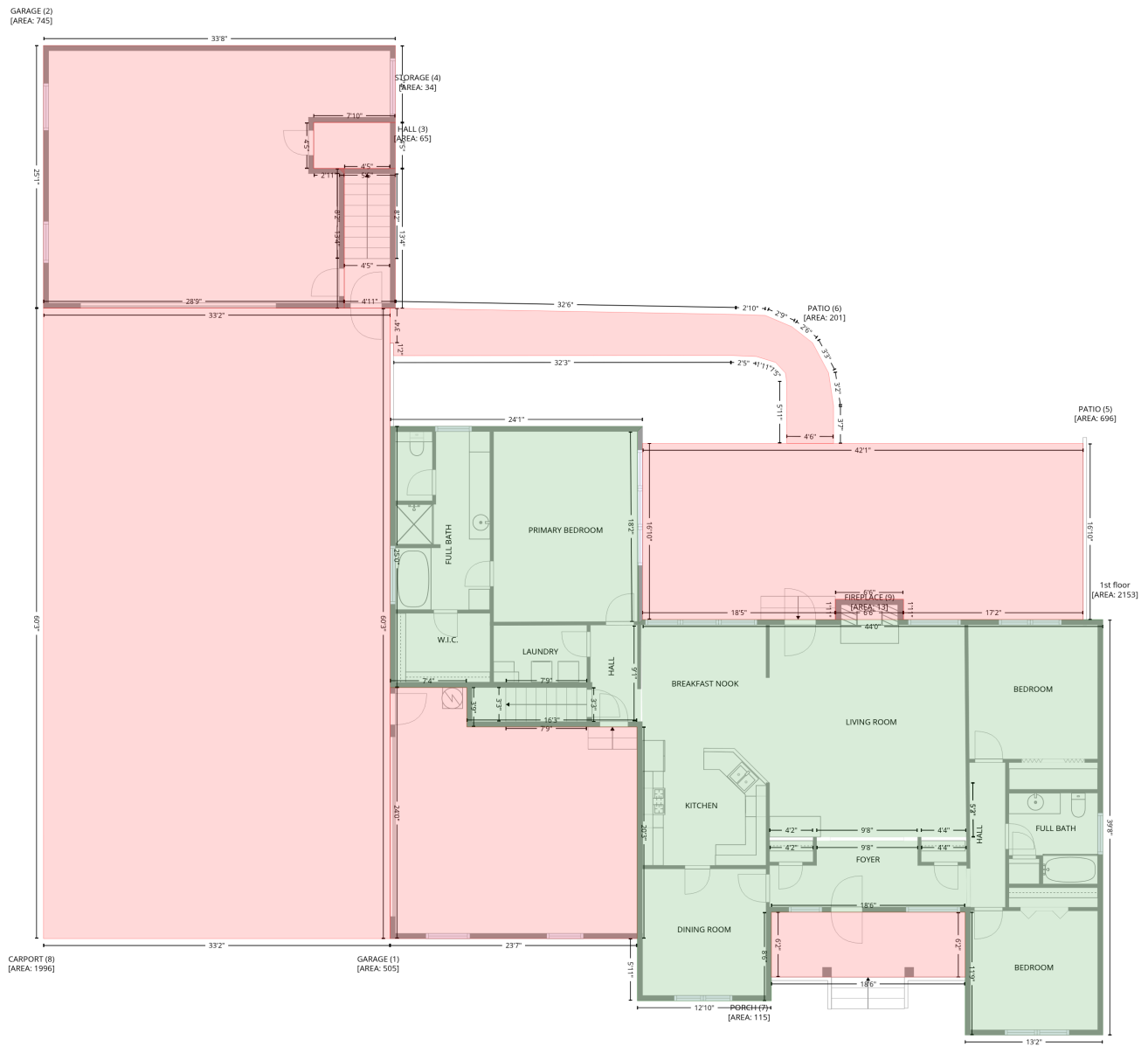


# 726 Tom Morris Ln SW,Concord,NC,US

Gross Living Area: 2803 sq. ft

## Level 1



# 726 Tom Morris Ln SW,Concord,NC,US

Gross Living Area: 2803 sq. ft

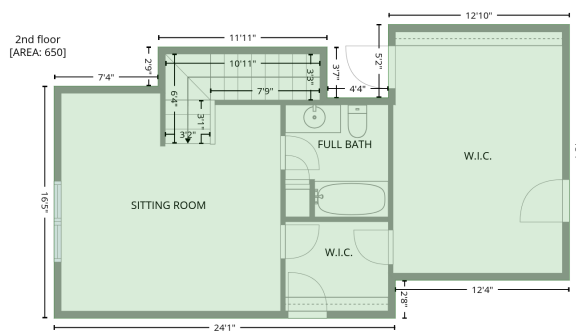
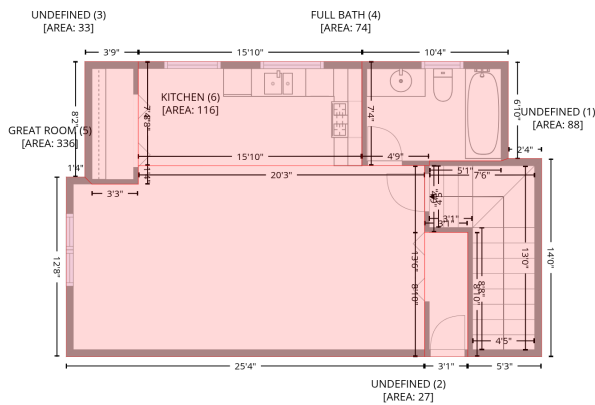
## Level 1

Space	Area (sq. ft)	Calculation <small>Coordinate Polygon Area Algorithm using inches</small>
1st floor (Living area)	2153	$-(720.1 + 714.1) * (505 - 511) + (714.1 + 715.7) * (511 - 728.9) + (715.7 + 715.8) * (728.9 - 728.9) + (715.8 + 715.7) * (728.9 - 731.1) + (715.7 + 720.1) * (731.1 - 726.7) + (720.1 + 1248) * (726.7 - 726.7) + (1248 + 1248) * (726.7 - 1203.2) + (1248 + 1090.1) * (1203.2 - 1203.2) + (1090.1 + 1090.1) * (1203.2 - 1062.2) + (1090.1 + 867.7) * (1062.2 - 1062.2) + (867.7 + 867.7) * (1062.2 - 1163.8) + (867.7 + 714.1) * (1163.8 - 1163.8) + (714.1 + 714.1) * (1163.8 - 1092.5) + (714.1 + 713.8) * (1092.5 - 1092.5) + (713.8 + 713.8) * (1092.5 - 849.7) + (713.8 + 518.6) * (849.7 - 849.7) + (518.6 + 518.6) * (849.7 - 804.6) + (518.6 + 430.6) * (804.6 - 804.6) + (430.6 + 430.6) * (804.6 - 505) + (430.6 + 720.1) * (505 - 505) * 0.5 * 0.00694 + -(1090.9 + 1091.3) * (913.7 - 976.2) + (1091.3 + 1039.6) * (976.2 - 976.2) + (1039.6 + 1039.6) * (976.2 - 980.2) + (1039.6 + 1091.3) * (980.2 - 980.2) + (1091.3 + 1091.5) * (980.2 - 980.2) + (1091.5 + 1091.4) * (980.2 - 976.2) + (1091.4 + 1090.9) * (976.2 - 913.7) * 0.5 * 0.00694 + -(915.7 + 865.7) * (976.2 - 976.2) + (865.7 + 865.7) * (976.2 - 980.2) + (865.7 + 915.7) * (980.2 - 980.2) + (915.7 + 915.7) * (980.2 - 976.2) * 0.5 * 0.00694 + -(1035.6 + 919.7) * (976.2 - 976.2) + (919.7 + 919.7) * (976.2 - 980.2) + (919.7 + 1035.6) * (980.2 - 980.2) + (1035.6 + 1035.6) * (980.2 - 976.2) * 0.5 * 0.00694 + -(718.2 + 718.2) * (733.5 - 842.9) + (718.2 + 719.8) * (842.9 - 843.7) + (719.8 + 719.8) * (843.7 - 842.9) + (719.8 + 718.2) * (842.9 - 733.5) * 0.5 * 0.00694$
GARAGE (Non-living area)	505	$-(518.6 + 518.6) * (804.6 - 849.7) + (518.6 + 713.8) * (849.7 - 849.7) + (713.8 + 713.8) * (849.7 - 1092.5) + (713.8 + 430.6) * (1092.5 - 1092.5) + (430.6 + 430.6) * (1092.5 - 804.6) + (430.6 + 518.6) * (804.6 - 804.6) * 0.5 * 0.00694$
GARAGE (Non-living area)	745	$-(436.6 + 436.6) * (68.4 - 156.7) + (436.6 + 342.9) * (156.7 - 156.7) + (342.9 + 342.9) * (156.7 - 209.4) + (342.9 + 378) * (209.4 - 209.4) + (378 + 378) * (209.4 - 369.7) + (378 + 33) * (369.7 - 369.7) + (33 + 33) * (369.7 - 68.4) + (33 + 436.6) * (68.4 - 68.4) * 0.5 * 0.00694$
HALL (Non-living area)	65	$-(436.6 + 436.6) * (209.4 - 369.7) + (436.6 + 378) * (369.7 - 369.7) + (378 + 378) * (369.7 - 215.4) + (378 + 372) * (215.4 - 209.4) + (372 + 436.6) * (209.4 - 209.4) * 0.5 * 0.00694$
STORAGE (Non-living area)	34	$-(436.6 + 436.6) * (156.7 - 209.4) + (436.6 + 378) * (209.4 - 209.4) + (378 + 342.9) * (209.4 - 209.4) + (342.9 + 342.9) * (209.4 - 156.7) + (342.9 + 436.6) * (156.7 - 156.7) * 0.5 * 0.00694$
PATIO (Non-living area)	696	$-(1225.5 + 1225.5) * (524.7 - 726.7) + (1225.5 + 1019.3) * (726.7 - 726.7) + (1019.3 + 1019.3) * (726.7 - 703.4) + (1019.3 + 941.2) * (703.4 - 703.4) + (941.2 + 941.2) * (703.4 - 726.7) + (941.2 + 720.1) * (726.7 - 726.7) + (720.1 + 720.1) * (726.7 - 524.7) + (720.1 + 1225.5) * (524.7 - 524.7) * 0.5 * 0.00694$
PATIO (Non-living area)	201	$-(436.6 + 826.6) * (369.7 - 376.7) + (826.6 + 860.7) * (376.7 - 377.9) + (860.7 + 891.4) * (377.9 - 390.9) + (891.4 + 915) * (390.9 - 409.3) + (915 + 933.4) * (409.3 - 443.7) + (933.4 + 939.1) * (443.7 - 481.7) + (939.1 + 939.1) * (481.7 - 524.6) + (939.1 + 885.3) * (524.6 - 524.5) + (885.3 + 885.2) * (524.5 - 453.4) + (885.2 + 883.9) * (453.4 - 444) + (883.9 + 872.5) * (444 - 431.7) + (872.5 + 850.8) * (431.7 - 425.1) + (850.8 + 821.7) * (425.1 - 423.8) + (821.7 + 434.7) * (423.8 - 424.1) + (434.7 + 434.6) * (424.1 - 409.8) + (434.6 + 430.6) * (409.8 - 409.8) + (430.6 + 430.6) * (409.8 - 369.8) + (430.6 + 436.6) * (369.8 - 369.7) * 0.5 * 0.00694$
PORCH (Non-living area)	115	$-(1090 + 1090) * (1062.2 - 1136.6) + (1090 + 867.7) * (1136.6 - 1136.6) + (867.7 + 867.7) * (1136.6 - 1062.2) + (867.7 + 1090) * (1062.2 - 1062.2) * 0.5 * 0.00694$
CARPORT (Non-living area)	1996	$-(430.6 + 430.6) * (369.7 - 1092.5) + (430.6 + 33) * (1092.5 - 1092.5) + (33 + 33) * (1092.5 - 369.7) + (33 + 430.6) * (369.7 - 369.7) * 0.5 * 0.00694$
FIREPLACE (Non-living area)	13	$-(1019.3 + 1019.3) * (703.4 - 726.7) + (1019.3 + 941.2) * (726.7 - 726.7) + (941.2 + 941.2) * (726.7 - 703.4) + (941.2 + 1019.3) * (703.4 - 703.4) * 0.5 * 0.00694$

# 726 Tom Morris Ln SW,Concord,NC,US

Gross Living Area: 2803 sq. ft

## Level 2



Space	Area (sq. ft)	Calculation
2nd floor (Living area)	650	Coordinate Polygon Area Algorithm using inches $-((867.7 + 867.7) * (779.4 - 996.5) + (867.7 + 720.1) * (996.5 - 996.5) + (720.1 + 720.1) * (996.5 - 1028.7) + (720.1 + 430.6) * (1028.7 - 1028.7) + (430.6 + 430.6) * (1028.7 - 831.8) + (430.6 + 518.8) * (831.8 - 831.8) + (518.8 + 518.8) * (831.8 - 798.5) + (518.8 + 662.2) * (798.5 - 798.5) + (662.2 + 662.2) * (798.5 - 841.6) + (662.2 + 714.1) * (841.6 - 841.6) + (714.1 + 714.1) * (841.6 - 779.4) + (714.1 + 867.7) * (779.4 - 779.4)) * 0.5 * 0.00694$

# 726 Tom Morris Ln SW,Concord,NC,US

Gross Living Area: 2803 sq. ft

## Level 2

Space	Area (sq. ft)	Calculation <small>Coordinate Polygon Area Algorithm using inches</small>
UNDEFINED (Non-living area)	88	$-\left((436.2 + 436.2) * (150.7 - 318.9) + (436.2 + 373.5) * (318.9 - 318.9) + (373.5 + 373.5) * (318.9 - 213.4) + (373.5 + 336.9) * (213.4 - 213.4) + (336.9 + 336.9) * (213.4 - 156.7) + (336.9 + 340.9) * (156.7 - 156.7) + (340.9 + 340.9) * (156.7 - 152.7) + (340.9 + 401.9) * (152.7 - 152.7) + (401.9 + 407.9) * (152.7 - 150.7) + (407.9 + 436.2) * (150.7 - 150.7)\right) * 0.5 * 0.00694$
UNDEFINED (Non-living area)	27	$-\left((373.5 + 373.5) * (213.4 - 318.9) + (373.5 + 336.9) * (318.9 - 318.9) + (336.9 + 336.9) * (318.9 - 213.4) + (336.9 + 373.5) * (213.4 - 213.4)\right) * 0.5 * 0.00694$
UNDEFINED (Non-living area)	33	$-\left((94.1 + 94.1) * (68.4 - 172.4) + (94.1 + 54.7) * (172.4 - 172.4) + (54.7 + 48.7) * (172.4 - 166.4) + (48.7 + 48.7) * (166.4 - 68.4) + (48.7 + 94.1) * (68.4 - 68.4)\right) * 0.5 * 0.00694$
FULL BATH (Non-living area)	74	$-\left((407.9 + 407.9) * (68.4 - 150.7) + (407.9 + 401.9) * (150.7 - 152.7) + (401.9 + 340.9) * (152.7 - 152.7) + (340.9 + 340.9) * (152.7 - 156.7) + (340.9 + 283.8) * (156.7 - 156.7) + (283.8 + 283.8) * (156.7 - 68.4) + (283.8 + 407.9) * (68.4 - 68.4)\right) * 0.5 * 0.00694$
GREAT ROOM (Non-living area)	336	$-\left((336.9 + 336.9) * (156.8 - 318.9) + (336.9 + 33) * (318.9 - 318.9) + (33 + 33) * (318.9 - 166.4) + (33 + 48.7) * (166.4 - 166.4) + (48.7 + 54.7) * (166.4 - 172.4) + (54.7 + 94.1) * (172.4 - 172.4) + (94.1 + 94.1) * (172.4 - 156.8) + (94.1 + 336.9) * (156.8 - 156.8)\right) * 0.5 * 0.00694$
KITCHEN (Non-living area)	116	$-\left((283.8 + 283.8) * (68.4 - 156.7) + (283.8 + 94.1) * (156.7 - 156.8) + (94.1 + 94.1) * (156.8 - 68.4) + (94.1 + 283.8) * (68.4 - 68.4)\right) * 0.5 * 0.00694$