

Home data report

74 Wrendale Crescent, Keswick, ON, CA



Total Area: 2446 sq. ft

Basement: 1006 sq. ft, 1st Floor: 1163 sq. ft, 2nd Floor: 277 sq. ft

Excluded: Utility 110 sq. ft, Garage 348 sq. ft, Walls: 214 sq. ft

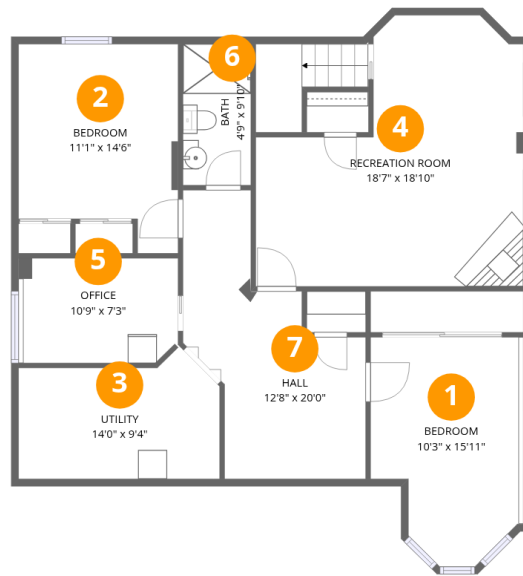
Property summary

 **3** Floors

 **4** Bedrooms

 **3** Bathrooms

 **1** Garages



Room dimensions

Floor 1 Below grade

Total:1006sqft

Excluded: 110sqft

#		Dimensions	sqft	Counted as living area
1	Bedroom	10'3" x 15'11"	145 sq. ft	Yes
2	Bedroom	11'1" x 14'6"	141 sq. ft	Yes
3	Utility	14'0" x 9'4"	109 sq. ft	No
4	Recreation Room	18'7" x 18'10"	276 sq. ft	Yes
5	Office	10'9" x 7'3"	79 sq. ft	Yes
6	Bath	4'9" x 9'10"	46 sq. ft	Yes
7	Hall	12'8" x 20'0"	161 sq. ft	Yes

74 Wrendale Crescent, Keswick, ON, CA



Room dimensions

Floor 2

Total: 1163sqft

Excluded: 348sqft

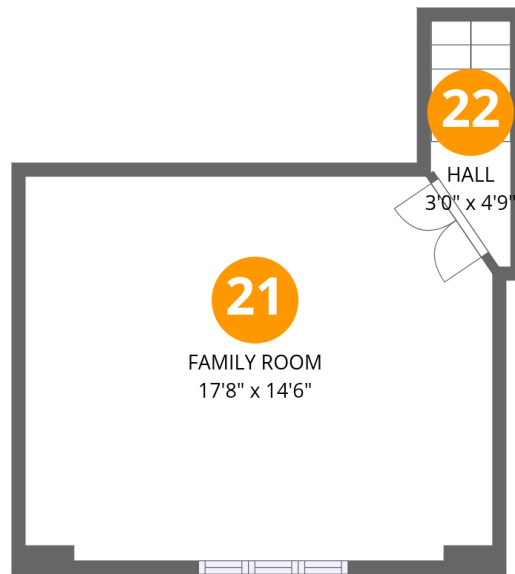
#		Dimensions	sqft	Counted as living area
8	Bath	5'1" x 7'7"	38 sq. ft	Yes
9	Breakfast Nook	11'11" x 8'0"	126 sq. ft	Yes
10	Hall	8'4" x 9'11"	81 sq. ft	Yes
11	Living Room	13'1" x 13'2"	133 sq. ft	Yes
12	Dining Area	16'9" x 9'2"	117 sq. ft	Yes
13	Garage	17'8" x 19'9"	348 sq. ft	No
14	Primary Bedroom	16'2" x 14'6"	189 sq. ft	Yes
15	Laundry	4'11" x 7'0"	30 sq. ft	Yes
16	Bath	9'8" x 5'1"	50 sq. ft	Yes
17	Bedroom	9'8" x 11'5"	111 sq. ft	Yes
18	Foyer	6'4" x 6'11"	54 sq. ft	Yes

Home data report

74 Wrendale Crescent, Keswick, ON, CA

#		Dimensions	sqft	Counted as living area
19	W.I.C.	6'6" x 6'6"	37 sq. ft	Yes
20	Kitchen	11'9" x 9'9"	115 sq. ft	Yes

74 Wrendale Crescent, Keswick, ON, CA



Room dimensions

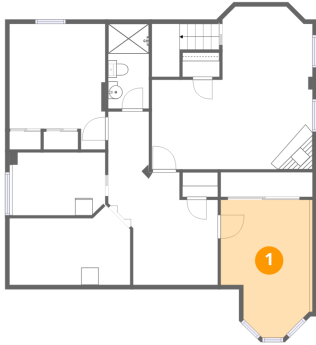
Floor 3

Total: 277 sqft

Excluded: 0 sqft

#		Dimensions	sqft	Counted as living area
21	Family Room	17'8" x 14'6"	252 sq. ft	Yes
22	Hall	3'0" x 4'9"	23 sq. ft	Yes

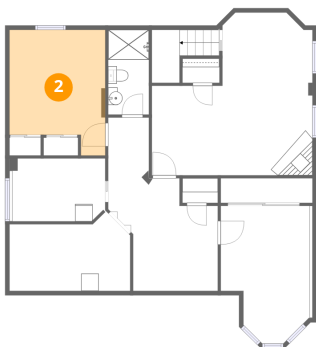
1 Floor 1 - Bedroom



Dimensions: 10'3" x 15'11"
Area: 145 sq. ft
Counted as living area: Yes

Heated: Yes
Finished: Yes
Enclosed: Yes
Contiguous: Yes
Permitted: Yes
Wet space: No
Addition: No
Conversion: No

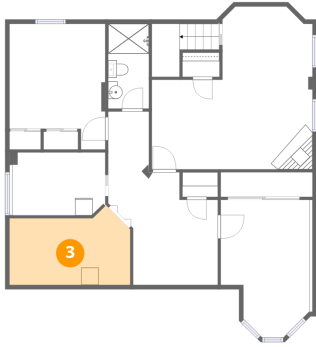
2 Floor 1 - Bedroom



Dimensions: 11'1" x 14'6"
Area: 141 sq. ft
Counted as living area: Yes

Heated: Yes
Finished: Yes
Enclosed: Yes
Contiguous: Yes
Permitted: Yes
Wet space: No
Addition: No
Conversion: No

3 Floor 1 - Utility



Dimensions: 14'0" x 9'4"
Area: 109 sq. ft
Counted as living area: No

Heated: Yes
Finished: No
Enclosed: Yes
Contiguous: Yes
Permitted: Yes
Wet space: No
Addition: No
Conversion: No

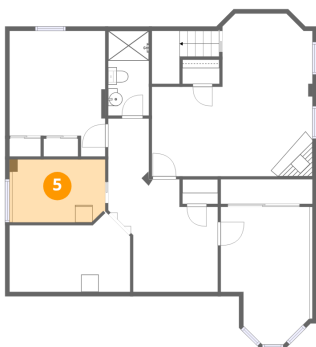
4 Floor 1 - Recreation Room



Dimensions: 18'7" x 18'10"
Area: 276 sq. ft
Counted as living area: Yes

Heated: Yes
Finished: Yes
Enclosed: Yes
Contiguous: Yes
Permitted: Yes
Wet space: No
Addition: No
Conversion: No

5 Floor 1 - Office



Dimensions: 10'9" x 7'3"
Area: 79 sq. ft
Counted as living area: Yes

Heated: Yes
Finished: Yes
Enclosed: Yes
Contiguous: Yes
Permitted: Yes
Wet space: No
Addition: No
Conversion: No

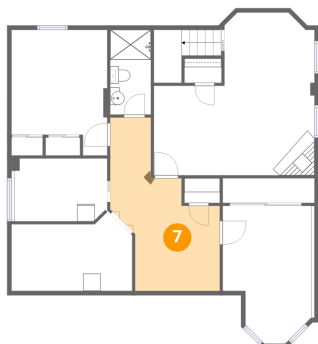
6 Floor 1 - Bath



Dimensions: 4'9" x 9'10"
Area: 46 sq. ft
Counted as living area: Yes

Heated: Yes
Finished: Yes
Enclosed: Yes
Contiguous: Yes
Permitted: Yes
Wet space: Yes
Addition: No
Conversion: No

7 Floor 1 - Hall



Dimensions: 12'8" x 20'0"
Area: 161 sq. ft
Counted as living area: Yes

Heated: Yes
Finished: Yes
Enclosed: Yes
Contiguous: Yes
Permitted: Yes
Wet space: No
Addition: No
Conversion: No

8 Floor 2 - Bath



Dimensions: 5'1" x 7'7"
Area: 38 sq. ft
Counted as living area: Yes

Heated: Yes
Finished: Yes
Enclosed: Yes
Contiguous: Yes
Permitted: Yes
Wet space: Yes
Addition: No
Conversion: No

9 Floor 2 - Breakfast Nook



Dimensions: 11'11" x 8'0"
Area: 126 sq. ft
Counted as living area: Yes

Heated: Yes
Finished: Yes
Enclosed: Yes
Contiguous: Yes
Permitted: Yes
Wet space: No
Addition: No
Conversion: No

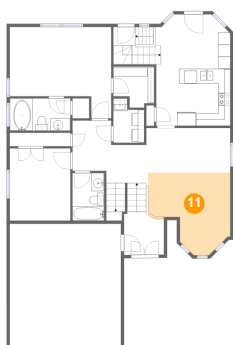
10 Floor 2 - Hall



Dimensions: 8'4" x 9'11"
Area: 81 sq. ft
Counted as living area: Yes

Heated: Yes
Finished: Yes
Enclosed: Yes
Contiguous: Yes
Permitted: Yes
Wet space: No
Addition: No
Conversion: No

11 Floor 2 - Living Room



Dimensions: 13'1" x 13'2"
Area: 133 sq. ft
Counted as living area: Yes

Heated: Yes
Finished: Yes
Enclosed: Yes
Contiguous: Yes
Permitted: Yes
Wet space: No
Addition: No
Conversion: No

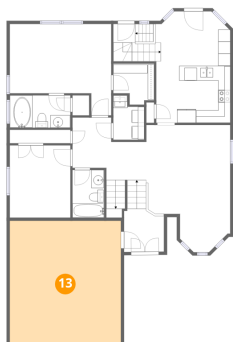
12 Floor 2 - Dining Area



Dimensions: 16'9" x 9'2"
Area: 117 sq. ft
Counted as living area: Yes

Heated: Yes
Finished: Yes
Enclosed: Yes
Contiguous: Yes
Permitted: Yes
Wet space: No
Addition: No
Conversion: No

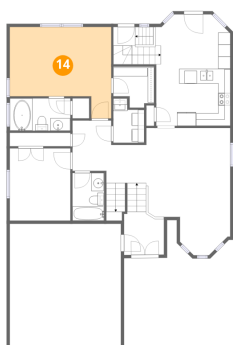
13 Floor 2 - Garage



Dimensions: 17'8" x 19'9"
Area: 348 sq. ft
Counted as living area: No

Heated: No
Finished: No
Enclosed: Yes
Contiguous: Yes
Permitted: Yes
Wet space: No
Addition: No
Conversion: No

14 Floor 2 - Primary Bedroom



Dimensions: 16'2" x 14'6"
Area: 189 sq. ft
Counted as living area: Yes

Heated: Yes
Finished: Yes
Enclosed: Yes
Contiguous: Yes
Permitted: Yes
Wet space: No
Addition: No
Conversion: No

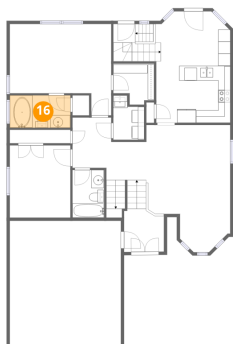
15 Floor 2 - Laundry



Dimensions: 4'11" x 7'0"
Area: 30 sq. ft
Counted as living area: Yes

Heated: Yes
Finished: Yes
Enclosed: Yes
Contiguous: Yes
Permitted: Yes
Wet space: No
Addition: No
Conversion: No

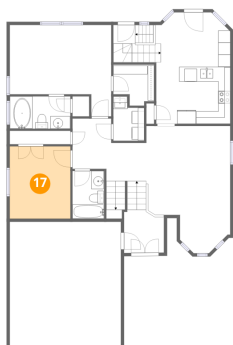
16 Floor 2 - Bath



Dimensions: 9'8" x 5'1"
Area: 50 sq. ft
Counted as living area: Yes

Heated: Yes
Finished: Yes
Enclosed: Yes
Contiguous: Yes
Permitted: Yes
Wet space: Yes
Addition: No
Conversion: No

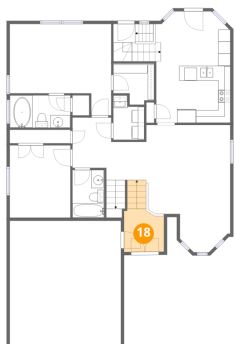
17 Floor 2 - Bedroom



Dimensions: 9'8" x 11'5"
Area: 111 sq. ft
Counted as living area: Yes

Heated: Yes
Finished: Yes
Enclosed: Yes
Contiguous: Yes
Permitted: Yes
Wet space: No
Addition: No
Conversion: No

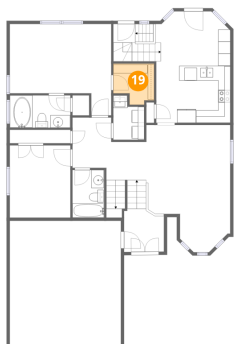
18 Floor 2 - Foyer



Dimensions: 6'4" x 6'11"
Area: 54 sq. ft
Counted as living area: Yes

Heated: Yes
Finished: Yes
Enclosed: Yes
Contiguous: Yes
Permitted: Yes
Wet space: No
Addition: No
Conversion: No

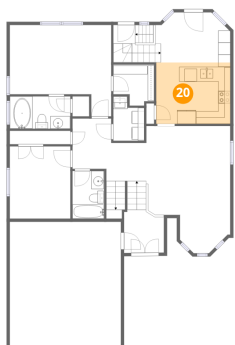
19 Floor 2 - W.I.C.



Dimensions: 6'6" x 6'6"
Area: 37 sq. ft
Counted as living area: Yes

Heated: Yes
Finished: Yes
Enclosed: Yes
Contiguous: Yes
Permitted: Yes
Wet space: No
Addition: No
Conversion: No

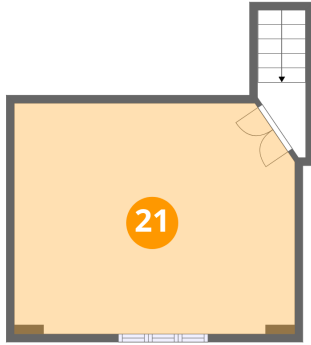
20 Floor 2 - Kitchen



Dimensions: 11'9" x 9'9"
Area: 115 sq. ft
Counted as living area: Yes

Heated: Yes
Finished: Yes
Enclosed: Yes
Contiguous: Yes
Permitted: Yes
Wet space: No
Addition: No
Conversion: No

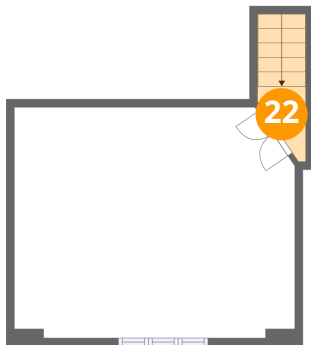
21 Floor 3 - Family Room



Dimensions: 17'8" x 14'6"
Area: 252 sq. ft
Counted as living area: Yes

Heated: Yes
Finished: Yes
Enclosed: Yes
Contiguous: Yes
Permitted: Yes
Wet space: No
Addition: No
Conversion: No

22 Floor 3 - Hall



Dimensions: 3'0" x 4'9"
Area: 23 sq. ft
Counted as living area: Yes

Heated: Yes
Finished: Yes
Enclosed: Yes
Contiguous: Yes
Permitted: Yes
Wet space: No
Addition: No
Conversion: No