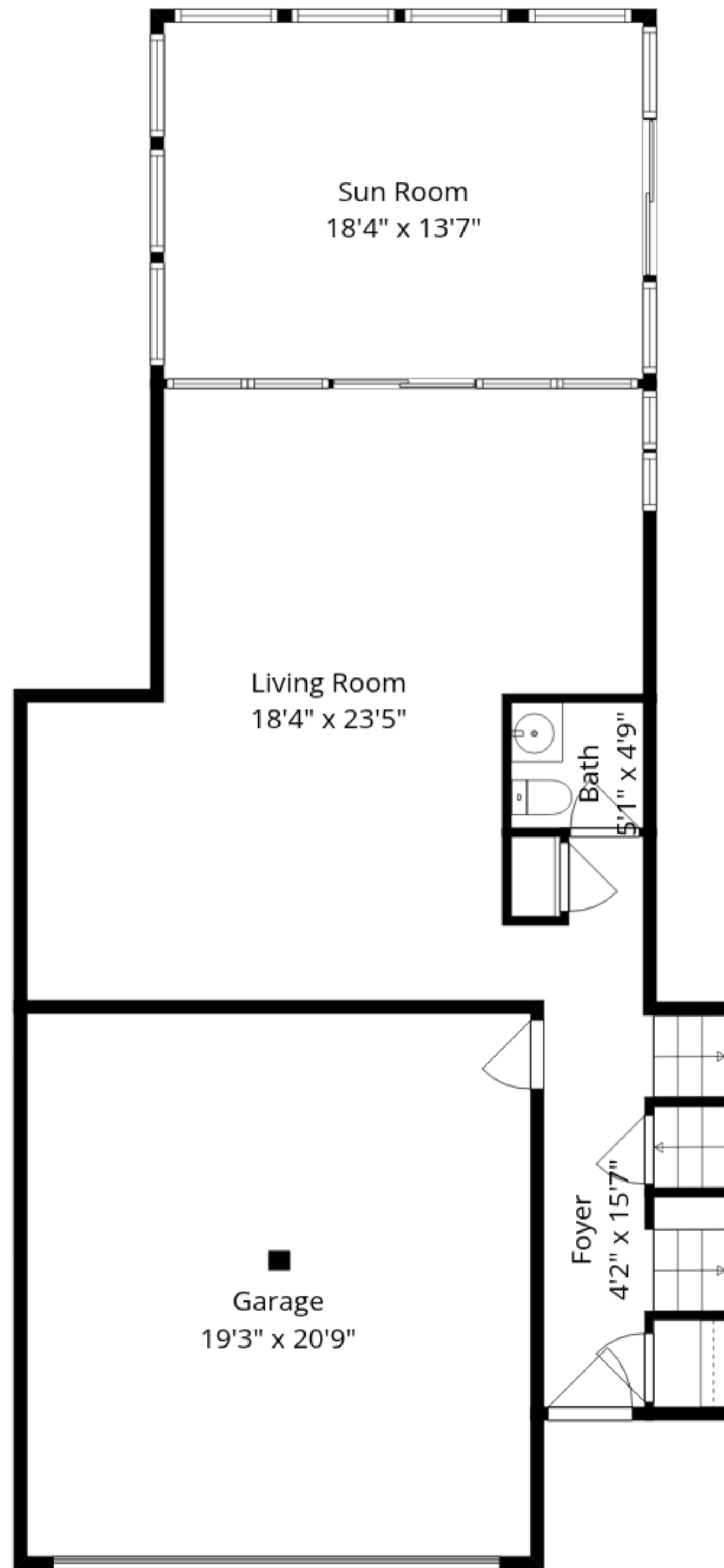


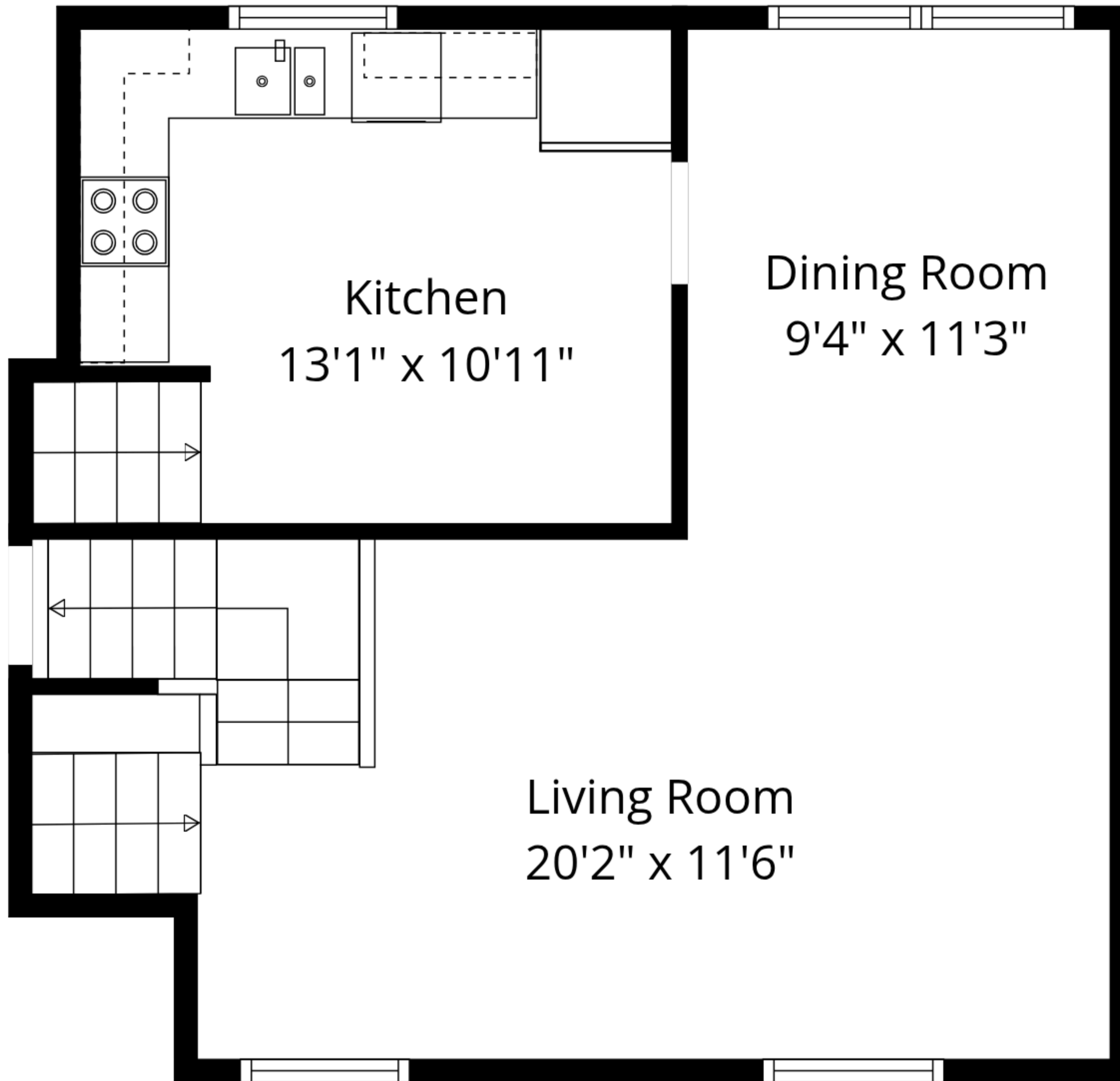
**Total GLA: 2355 sq. ft | Total: 3343 sq. ft**  
Floor 1 - Below grade: (Excluded areas 565 sq. ft)  
Main floor: 932 sq. ft (Excluded areas 423 sq. ft)  
Upper floor: 568 sq. ft  
3rd floor: 855 sq. ft

Sizes And Dimensions Are Approximate. Actual May Vary.



**Total GLA: 2355 sq. ft | Total: 3343 sq. ft**  
 Floor 1 - Below grade: (Excluded areas 565 sq. ft)  
 Main floor: 932 sq. ft (Excluded areas 423 sq. ft)  
 Upper floor: 568 sq. ft  
 3rd floor: 855 sq. ft

Sizes And Dimensions Are Approximate. Actual May Vary.



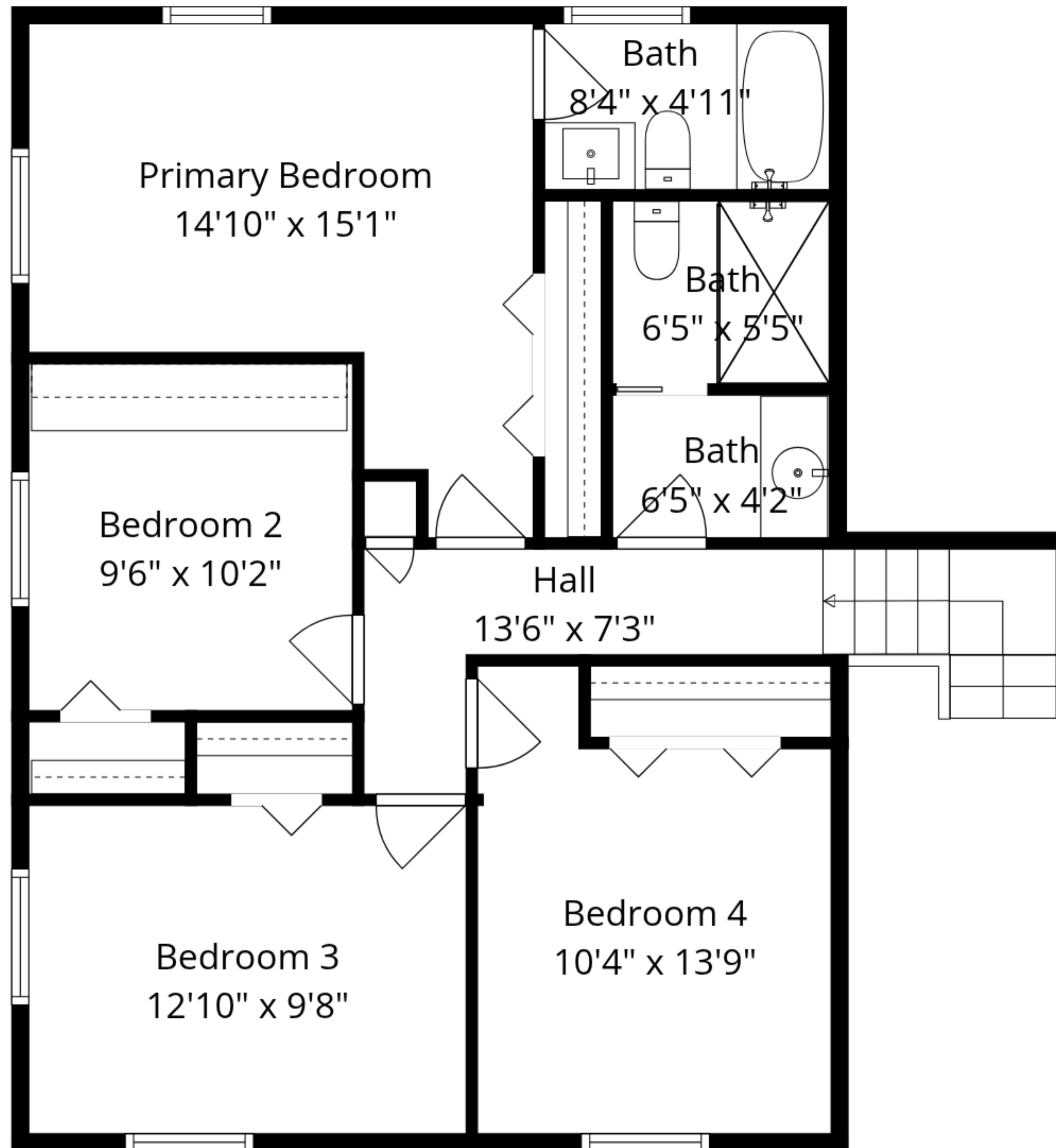
Kitchen  
13'1" x 10'11"

Dining Room  
9'4" x 11'3"

Living Room  
20'2" x 11'6"

**Total GLA: 2355 sq. ft | Total: 3343 sq. ft**  
Floor 1 - Below grade: (Excluded areas 565 sq. ft)  
Main floor: 932 sq. ft (Excluded areas 423 sq. ft)  
Upper floor: 568 sq. ft  
3rd floor: 855 sq. ft

Sizes And Dimensions Are Approximate. Actual May Vary.



**Total GLA: 2355 sq. ft | Total: 3343 sq. ft**  
 Floor 1 - Below grade: (Excluded areas 565 sq. ft)  
 Main floor: 932 sq. ft (Excluded areas 423 sq. ft)  
 Upper floor: 568 sq. ft  
 3rd floor: 855 sq. ft

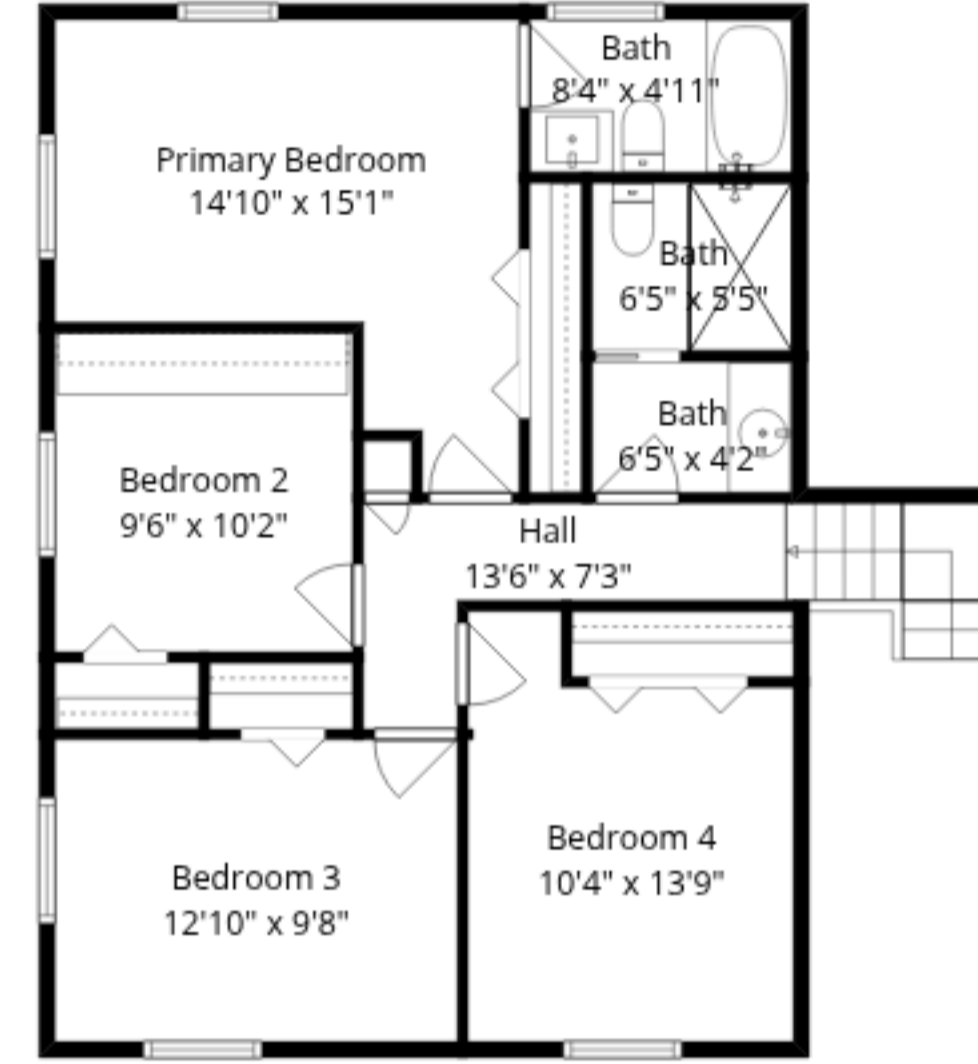
Sizes And Dimensions Are Approximate. Actual May Vary.



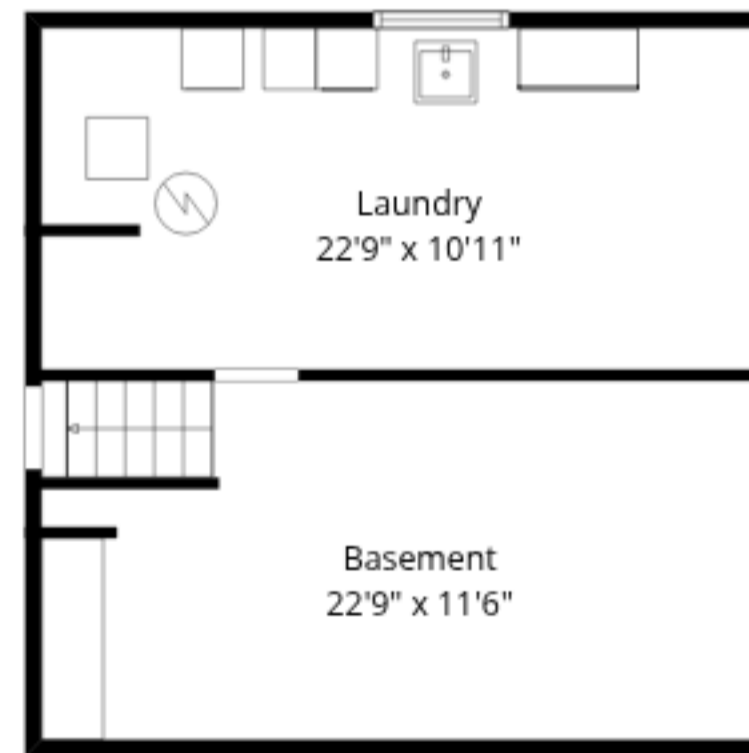
Main Floor



Upper Floor



3rd Floor



Lower Floor

**Total GLA: 2355 sq. ft | Total: 3343 sq. ft**  
 Floor 1 - Below grade: (Excluded areas 565 sq. ft)  
 Main floor: 932 sq. ft (Excluded areas 423 sq. ft)  
 Upper floor: 568 sq. ft  
 3rd floor: 855 sq. ft

Sizes And Dimensions Are Approximate. Actual May Vary.