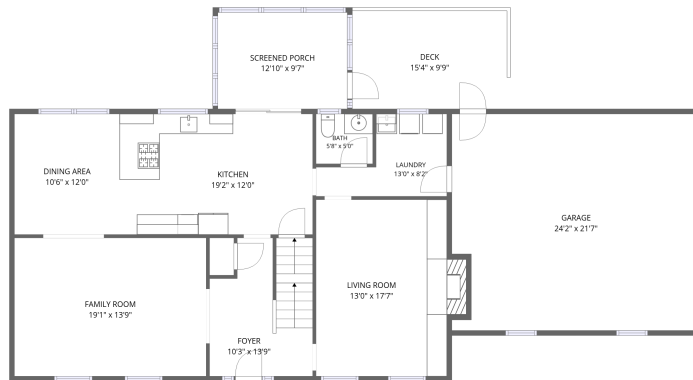
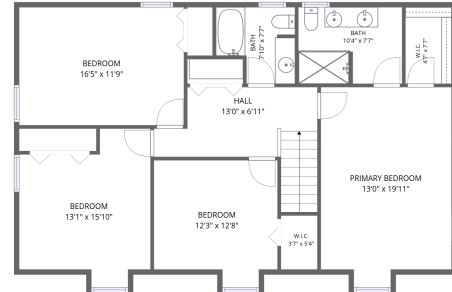


## Home data report

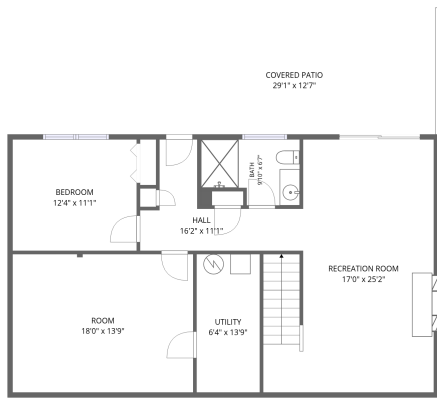
# 5206 Hawkbill Circle, Roanoke, Virginia 24018, United States



1st floor



2nd floor



Basement

**Total Area: 3242 sq. ft**

Basement: 972 sq. ft, 1st Floor: 1127 sq. ft, 2nd Floor: 1143 sq. ft

Excluded: Utility 87 sq. ft, Covered patio 327 sq. ft, Fireplace 26 sq. ft, Garage 508 sq. ft, Screened porch 124 sq. ft, Deck 150 sq. ft, Walls: 260 sq. ft

## Property summary

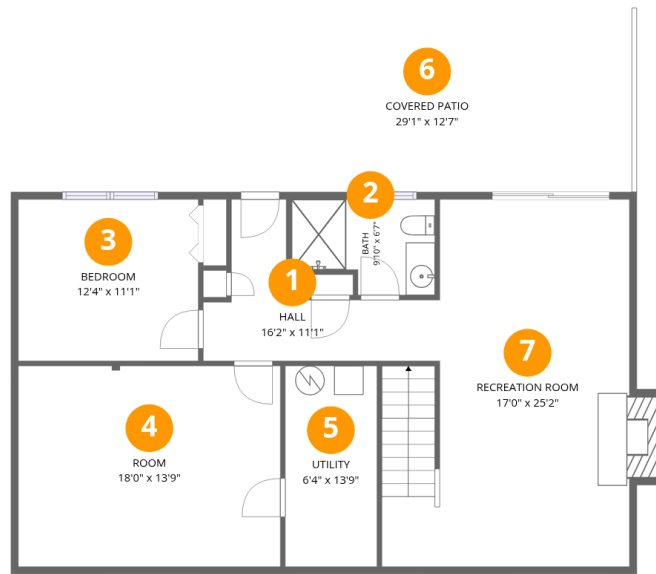


Home data report

**5206 Hawkbill Circle, Roanoke, Virginia 24018, United States**

 **1**  
Half baths

 **1**  
Garages



## Room dimensions

Floor 1 Below grade

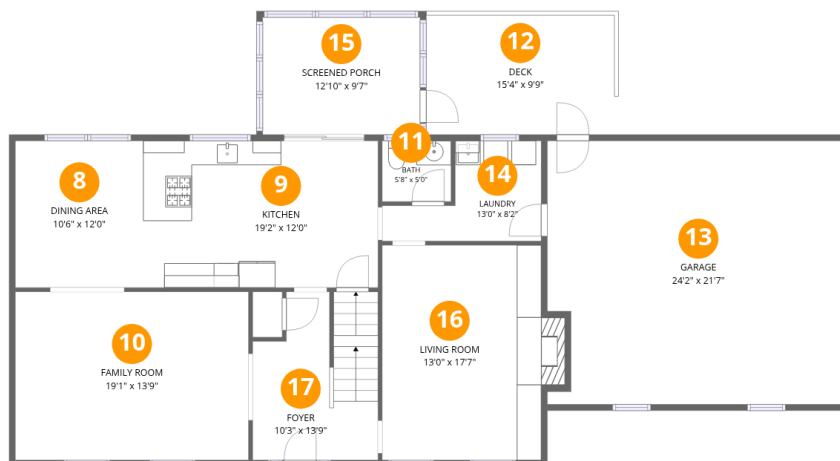
Total:972sqft

Excluded: 427sqft

#		Dimensions	sqft	Counted as living area
1	Hall	16'2" x 11'1"	94 sq. ft	Yes
2	Bath	9'10" x 6'7"	57 sq. ft	Yes
3	Bedroom	12'4" x 11'1"	137 sq. ft	Yes
4	Room	18'0" x 13'9"	248 sq. ft	Yes
5	Utility	6'4" x 13'9"	87 sq. ft	No
6	Covered Patio	29'1" x 12'7"	327 sq. ft	No
7	Recreation Room	17'0" x 25'2"	391 sq. ft	Yes

# Home data report

## 5206 Hawkbill Circle, Roanoke, Virginia 24018, United States

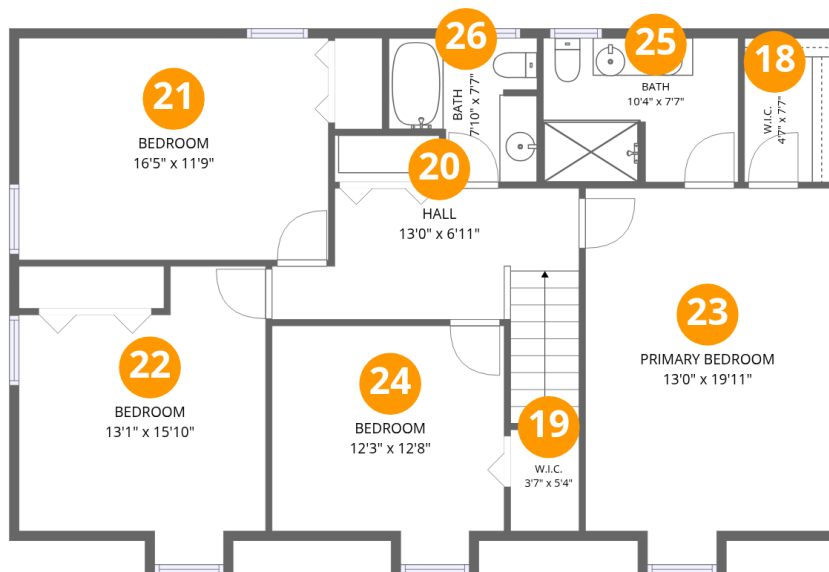


### Room dimensions

Floor 2

Total: 1127sqft Excluded: 795sqft

#		Dimensions	sqft	Counted as living area
8	Dining Area	10'6" x 12'0"	126 sq. ft	Yes
9	Kitchen	19'2" x 12'0"	231 sq. ft	Yes
10	Family Room	19'1" x 13'9"	263 sq. ft	Yes
11	Bath	5'8" x 5'0"	28 sq. ft	Yes
12	Deck	15'4" x 9'9"	150 sq. ft	No
13	Garage	24'2" x 21'7"	508 sq. ft	No
14	Laundry	13'0" x 8'2"	75 sq. ft	Yes
15	Screened Porch	12'10" x 9'7"	124 sq. ft	No
16	Living Room	13'0" x 17'7"	240 sq. ft	Yes
17	Foyer	10'3" x 13'9"	128 sq. ft	Yes



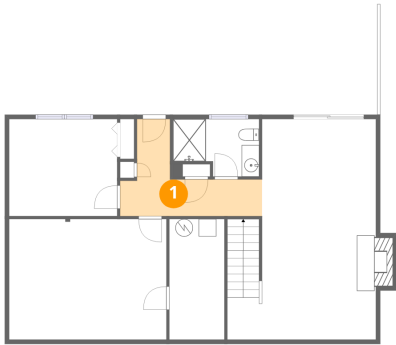
## Room dimensions

Floor 3

Total:1143sqft Excluded: 0sqft

#		Dimensions	sqft	Counted as living area
18	W.I.C.	4'7" x 7'7"	35 sq. ft	Yes
19	W.I.C.	3'7" x 5'4"	20 sq. ft	Yes
20	Hall	13'0" x 6'11"	119 sq. ft	Yes
21	Bedroom	16'5" x 11'9"	193 sq. ft	Yes
22	Bedroom	13'1" x 15'10"	169 sq. ft	Yes
23	Primary Bedroom	13'0" x 19'11"	243 sq. ft	Yes
24	Bedroom	12'3" x 12'8"	140 sq. ft	Yes
25	Bath	10'4" x 7'7"	78 sq. ft	Yes
26	Bath	7'10" x 7'7"	51 sq. ft	Yes

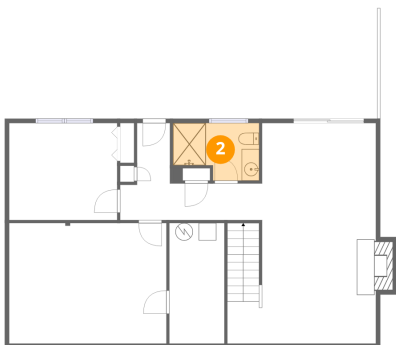
## 1 Floor 1 - Hall



Dimensions: 16'2" x 11'1"  
Area: 94 sq. ft  
Counted as living area: Yes

Heated: Yes  
Finished: Yes  
Enclosed: Yes  
Contiguous: Yes  
Permitted: Yes  
Wet space: No  
Addition: No  
Conversion: No

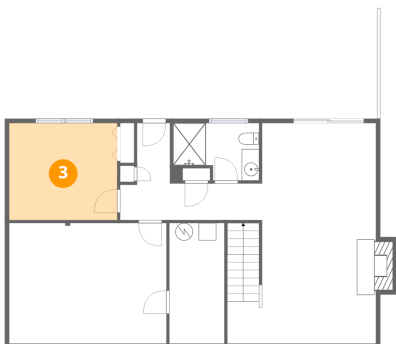
## 2 Floor 1 - Bath



Dimensions: 9'10" x 6'7"  
Area: 57 sq. ft  
Counted as living area: Yes

Heated: Yes  
Finished: Yes  
Enclosed: Yes  
Contiguous: Yes  
Permitted: Yes  
Wet space: Yes  
Addition: No  
Conversion: No

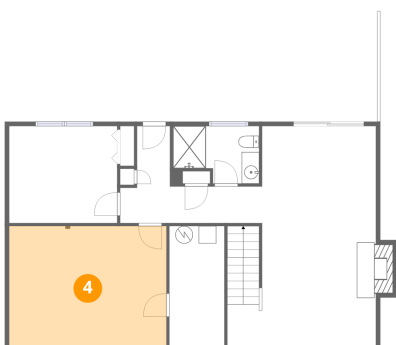
### 3 Floor 1 - Bedroom



Dimensions: 12'4" x 11'1"  
Area: 137 sq. ft  
Counted as living area: Yes

Heated: Yes  
Finished: Yes  
Enclosed: Yes  
Contiguous: Yes  
Permitted: Yes  
Wet space: No  
Addition: No  
Conversion: No

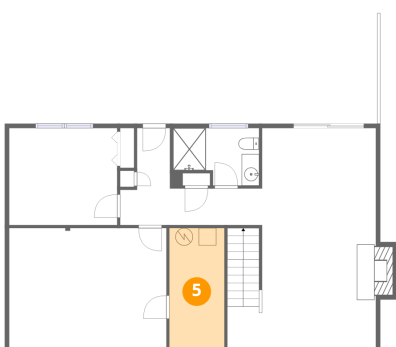
### 4 Floor 1 - Room



Dimensions: 18'0" x 13'9"  
Area: 248 sq. ft  
Counted as living area: Yes

Heated: Yes  
Finished: Yes  
Enclosed: Yes  
Contiguous: Yes  
Permitted: Yes  
Wet space: No  
Addition: No  
Conversion: No

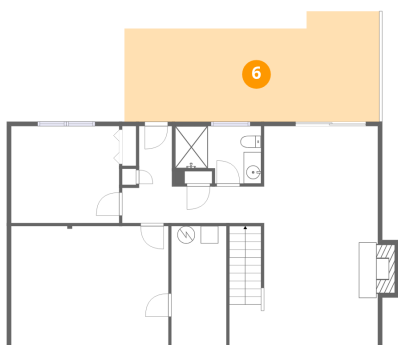
### 5 Floor 1 - Utility



Dimensions: 6'4" x 13'9"  
Area: 87 sq. ft  
Counted as living area: No

Heated: Yes  
Finished: No  
Enclosed: Yes  
Contiguous: Yes  
Permitted: Yes  
Wet space: No  
Addition: No  
Conversion: No

### 6 Floor 1 - Covered Patio



Dimensions: 29'1" x 12'7"  
Area: 327 sq. ft  
Counted as living area: No

Heated: No  
Finished: No  
Enclosed: No  
Contiguous: Yes  
Permitted: Yes  
Wet space: No  
Addition: No  
Conversion: No

### 7 Floor 1 - Recreation Room



Dimensions: 17'0" x 25'2"  
Area: 391 sq. ft  
Counted as living area: Yes

Heated: Yes  
Finished: Yes  
Enclosed: Yes  
Contiguous: Yes  
Permitted: Yes  
Wet space: No  
Addition: No  
Conversion: No

### 8 Floor 2 - Dining Area



Dimensions: 10'6" x 12'0"  
Area: 126 sq. ft  
Counted as living area: Yes

Heated: Yes  
Finished: Yes  
Enclosed: Yes  
Contiguous: Yes  
Permitted: Yes  
Wet space: No  
Addition: No  
Conversion: No

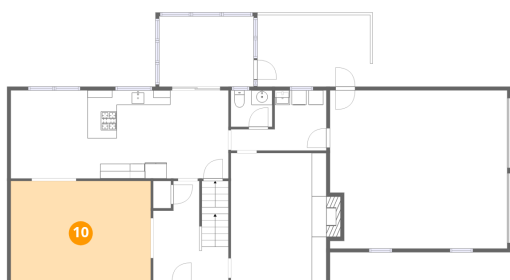
### 9 Floor 2 - Kitchen



Dimensions: 19'2" x 12'0"  
Area: 231 sq. ft  
Counted as living area: Yes

Heated: Yes  
Finished: Yes  
Enclosed: Yes  
Contiguous: Yes  
Permitted: Yes  
Wet space: No  
Addition: No  
Conversion: No

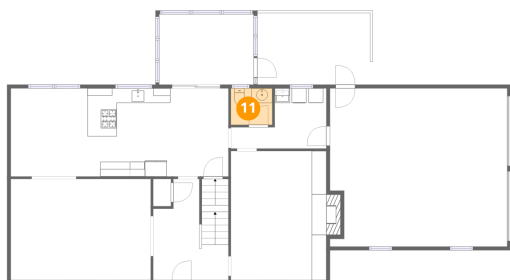
### 10 Floor 2 - Family Room



Dimensions: 19'1" x 13'9"  
Area: 263 sq. ft  
Counted as living area: Yes

Heated: Yes  
Finished: Yes  
Enclosed: Yes  
Contiguous: Yes  
Permitted: Yes  
Wet space: No  
Addition: No  
Conversion: No

### 11 Floor 2 - Bath



Dimensions: 5'8" x 5'0"  
Area: 28 sq. ft  
Counted as living area: Yes

Heated: Yes  
Finished: Yes  
Enclosed: Yes  
Contiguous: Yes  
Permitted: Yes  
Wet space: Yes  
Addition: No  
Conversion: No

## 12 Floor 2 - Deck



Dimensions: 15'4" x 9'9"  
Area: 150 sq. ft  
Counted as living area: No

Heated: No  
Finished: No  
Enclosed: No  
Contiguous: Yes  
Permitted: Yes  
Wet space: No  
Addition: No  
Conversion: No

## 13 Floor 2 - Garage



Dimensions: 24'2" x 21'7"  
Area: 508 sq. ft  
Counted as living area: No

Heated: No  
Finished: No  
Enclosed: Yes  
Contiguous: Yes  
Permitted: Yes  
Wet space: No  
Addition: No  
Conversion: No

## 14 Floor 2 - Laundry



Dimensions: 13'0" x 8'2"  
Area: 75 sq. ft  
Counted as living area: Yes

Heated: Yes  
Finished: Yes  
Enclosed: Yes  
Contiguous: Yes  
Permitted: Yes  
Wet space: No  
Addition: No  
Conversion: No

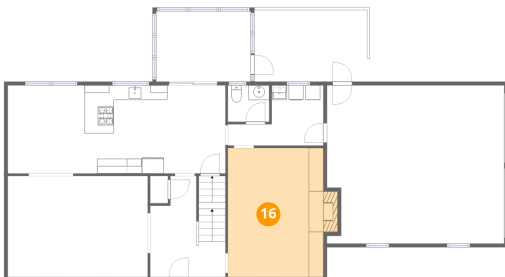
### 15 Floor 2 - Screened Porch



Dimensions: 12'10" x 9'7"  
Area: 124 sq. ft  
Counted as living area: No

Heated: No  
Finished: No  
Enclosed: No  
Contiguous: Yes  
Permitted: Yes  
Wet space: No  
Addition: No  
Conversion: No

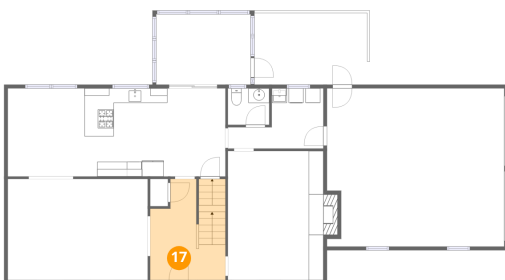
### 16 Floor 2 - Living Room



Dimensions: 13'0" x 17'7"  
Area: 240 sq. ft  
Counted as living area: Yes

Heated: Yes  
Finished: Yes  
Enclosed: Yes  
Contiguous: Yes  
Permitted: Yes  
Wet space: No  
Addition: No  
Conversion: No

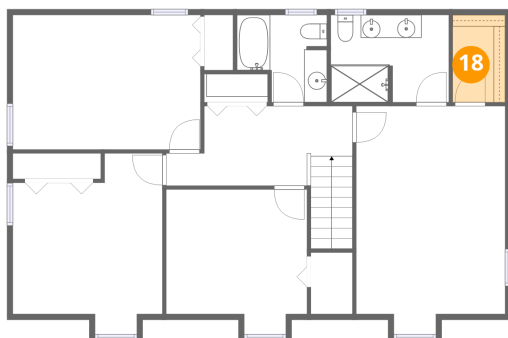
### 17 Floor 2 - Foyer



Dimensions: 10'3" x 13'9"  
Area: 128 sq. ft  
Counted as living area: Yes

Heated: Yes  
Finished: Yes  
Enclosed: Yes  
Contiguous: Yes  
Permitted: Yes  
Wet space: No  
Addition: No  
Conversion: No

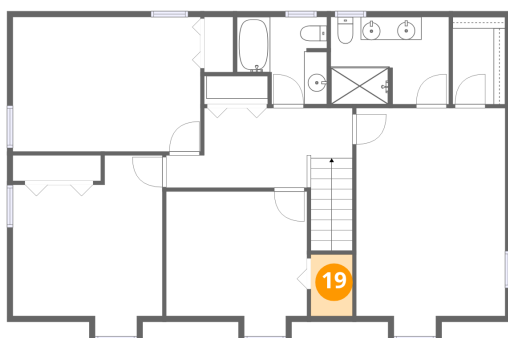
**18** Floor 3 - W.I.C.



Dimensions: 4'7" x 7'7"  
Area: 35 sq. ft  
Counted as living area: Yes

Heated: Yes  
Finished: Yes  
Enclosed: Yes  
Contiguous: Yes  
Permitted: Yes  
Wet space: No  
Addition: No  
Conversion: No

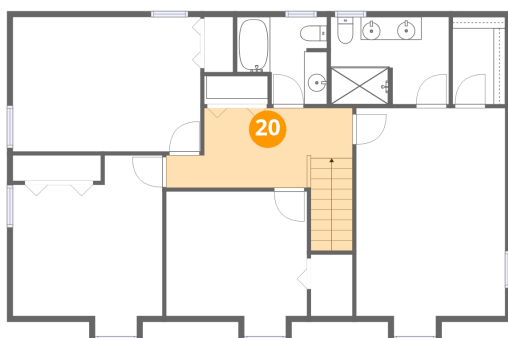
**19** Floor 3 - W.I.C.



Dimensions: 3'7" x 5'4"  
Area: 20 sq. ft  
Counted as living area: Yes

Heated: Yes  
Finished: Yes  
Enclosed: Yes  
Contiguous: Yes  
Permitted: Yes  
Wet space: No  
Addition: No  
Conversion: No

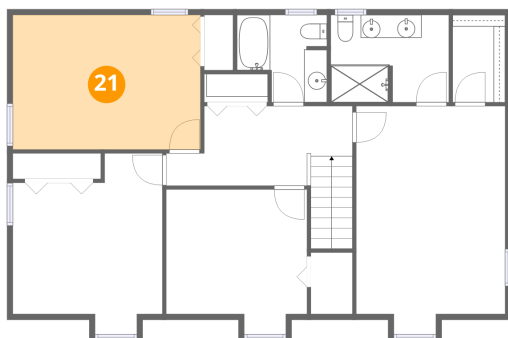
**20** Floor 3 - Hall



Dimensions: 13'0" x 6'11"  
Area: 119 sq. ft  
Counted as living area: Yes

Heated: Yes  
Finished: Yes  
Enclosed: Yes  
Contiguous: Yes  
Permitted: Yes  
Wet space: No  
Addition: No  
Conversion: No

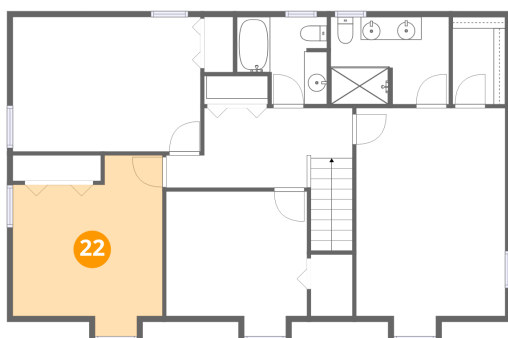
### 21 Floor 3 - Bedroom



Dimensions: 16'5" x 11'9"  
Area: 193 sq. ft  
Counted as living area: Yes

Heated: Yes  
Finished: Yes  
Enclosed: Yes  
Contiguous: Yes  
Permitted: Yes  
Wet space: No  
Addition: No  
Conversion: No

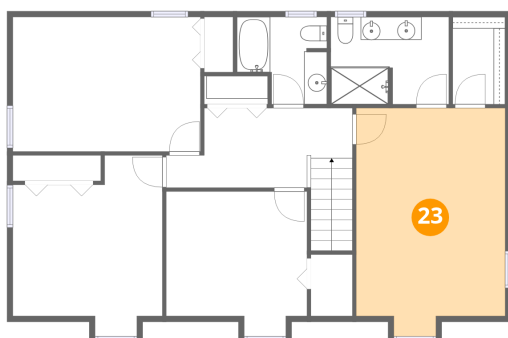
### 22 Floor 3 - Bedroom



Dimensions: 13'1" x 15'10"  
Area: 169 sq. ft  
Counted as living area: Yes

Heated: Yes  
Finished: Yes  
Enclosed: Yes  
Contiguous: Yes  
Permitted: Yes  
Wet space: No  
Addition: No  
Conversion: No

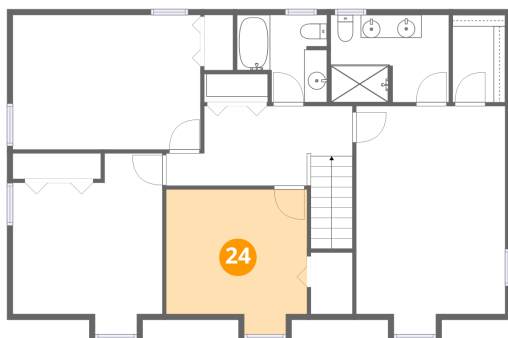
### 23 Floor 3 - Primary Bedroom



Dimensions: 13'0" x 19'11"  
Area: 243 sq. ft  
Counted as living area: Yes

Heated: Yes  
Finished: Yes  
Enclosed: Yes  
Contiguous: Yes  
Permitted: Yes  
Wet space: No  
Addition: No  
Conversion: No

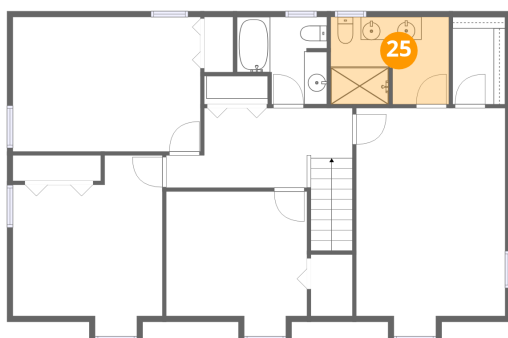
**24** Floor 3 - Bedroom



Dimensions: 12'3" x 12'8"  
Area: 140 sq. ft  
Counted as living area: Yes

Heated: Yes  
Finished: Yes  
Enclosed: Yes  
Contiguous: Yes  
Permitted: Yes  
Wet space: No  
Addition: No  
Conversion: No

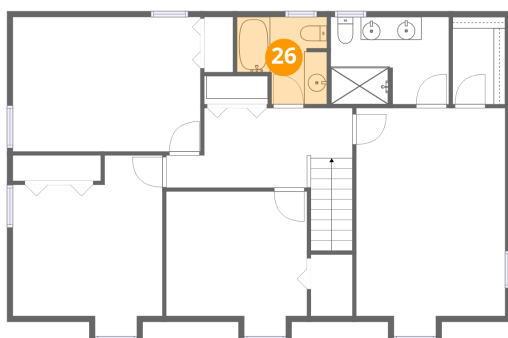
**25** Floor 3 - Bath



Dimensions: 10'4" x 7'7"  
Area: 78 sq. ft  
Counted as living area: Yes

Heated: Yes  
Finished: Yes  
Enclosed: Yes  
Contiguous: Yes  
Permitted: Yes  
Wet space: Yes  
Addition: No  
Conversion: No

**26** Floor 3 - Bath



Dimensions: 7'10" x 7'7"  
Area: 51 sq. ft  
Counted as living area: Yes

Heated: Yes  
Finished: Yes  
Enclosed: Yes  
Contiguous: Yes  
Permitted: Yes  
Wet space: Yes  
Addition: No  
Conversion: No