

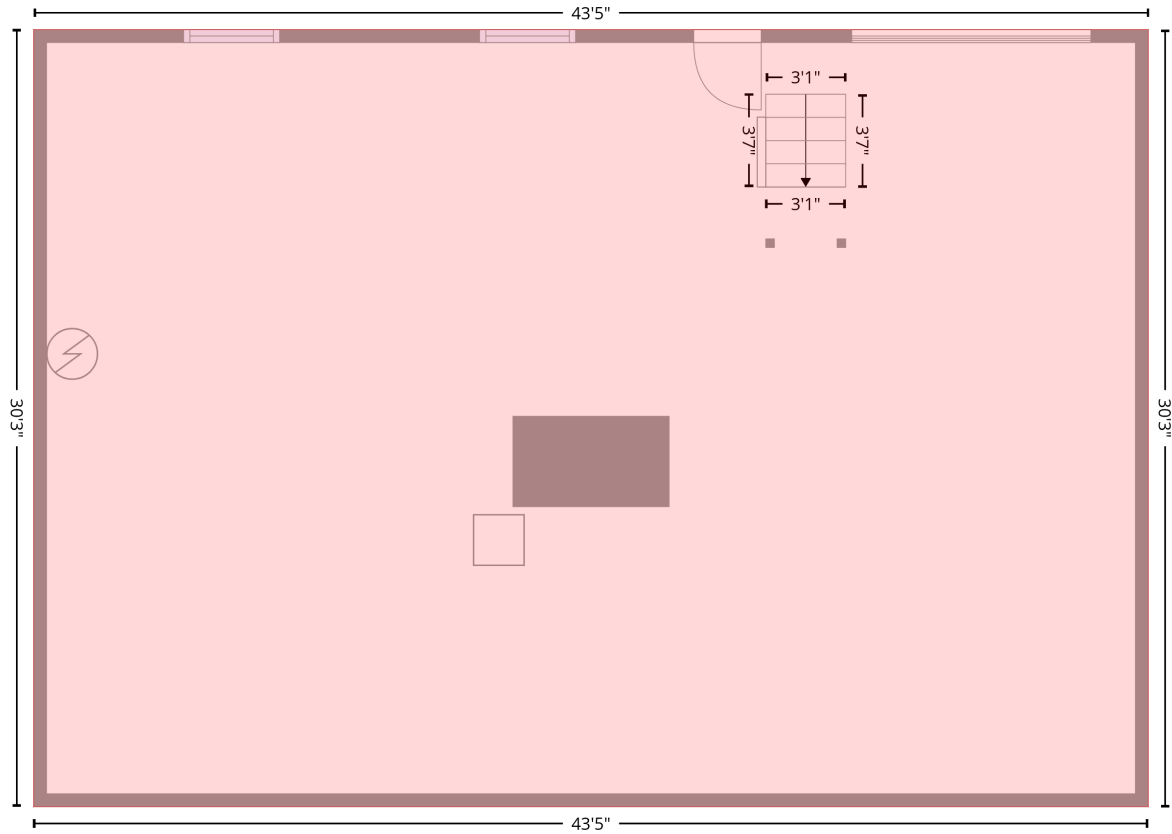
5725 Stanleyville Drive, Clayton Acres, Winston-Salem, Forsyth County, North Carolina, United States, 27105

Gross Living Area: 1421 sq. ft

Level 1

1st floor
[AREA: 0]

GARAGE (1)
[AREA: 1313]



Space	Area (sq. ft)	Calculation <small>Coordinate Polygon Area Algorithm using inches</small>
GARAGE (Non-living area)	1313	$-((766.2 + 766.2) * (53.6 - 416.7) + (766.2 + 245.2) * (416.7 - 416.7) + (245.2 + 245.2) * (416.7 - 53.6) + (245.2 + 766.2) * (53.6 - 53.6)) * 0.5 * 0.00694$

5725 Stanleyville Drive, Clayton Acres, Winston-Salem, Forsyth County, North Carolina, United States, 27105

Gross Living Area: 1421 sq. ft

Level 2



Space	Area (sq. ft)	Calculation <small>Coordinate Polygon Area Algorithm using inches</small>
2nd floor (Living area)	1421	$-((766.2 + 766.2) * (53.6 - 416.7) + (766.2 + 245.2) * (416.7 - 416.7) + (245.2 + 245.2) * (416.7 - 205.6) + (245.2 + 143.2) * (205.6 - 205.6) + (143.2 + 143.2) * (205.6 - 53.6) + (143.2 + 766.2) * (53.6 - 53.6)) * 0.5 * 0.00694$
CARPORT (Non-living area)	360	$-((143.2 + 143.2) * (57.6 - 392.1) + (143.2 + -11.8) * (392.1 - 392.1) + (-11.8 + -11.8) * (392.1 - 57.6) + (-11.8 + 143.2) * (57.6 - 57.6)) * 0.5 * 0.00694$
PORCH (Non-living area)	129	$-((245.2 + 245.2) * (205.6 - 388.1) + (245.2 + 143.2) * (388.1 - 388.1) + (143.2 + 143.2) * (388.1 - 205.6) + (143.2 + 245.2) * (205.6 - 205.6)) * 0.5 * 0.00694$