

Home data report

8287 S Quail St, Denver, CO, US



Total Area: 1535 sq. ft

Basement: 0 sq. ft, 1st Floor: 1535 sq. ft

Excluded: Basement 1395 sq. ft, Garage 480 sq. ft, Fireplace 10 sq. ft, Walls: 201 sq. ft

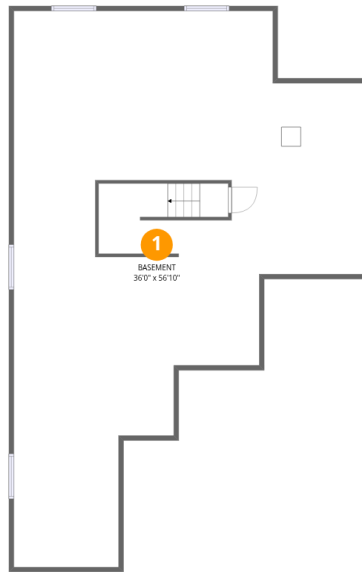
Property summary

 **2** Floors

 **3** Bedrooms

 **2** Bathrooms

 **1** Garages



Room dimensions

Floor 1 Below grade

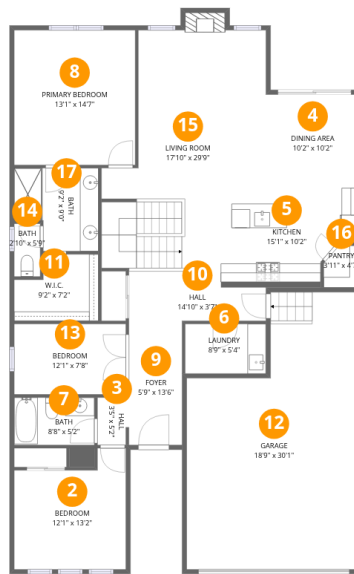
Total: 0sqft

Excluded: 1395sqft

#		Dimensions	sqft	Counted as living area
1	Basement	36'0" x 56'10"	2045 sq. ft	No

Home data report

8287 S Quail St, Denver, CO, US



Room dimensions

Floor 2

Total: 1535sqft Excluded: 490sqft

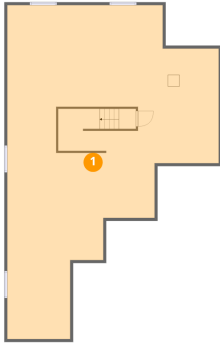
#		Dimensions	sqft	Counted as living area
2	Bedroom	12'1" x 13'2"	159 sq. ft	Yes
3	Hall	3'5" x 5'2"	18 sq. ft	Yes
4	Dining Area	10'2" x 10'2"	103 sq. ft	Yes
5	Kitchen	15'1" x 10'2"	153 sq. ft	Yes
6	Laundry	8'9" x 5'4"	47 sq. ft	Yes
7	Bath	8'8" x 5'2"	45 sq. ft	Yes
8	Primary Bedroom	13'1" x 14'7"	191 sq. ft	Yes
9	Foyer	5'9" x 13'6"	78 sq. ft	Yes
10	Hall	14'10" x 3'7"	53 sq. ft	Yes
11	W.I.C.	9'2" x 7'2"	66 sq. ft	Yes
12	Garage	18'9" x 30'1"	564 sq. ft	No

Home data report

8287 S Quail St,Denver,CO,US

#		Dimensions	sqft	Counted as living area
13	Bedroom	12'1" x 7'8"	92 sq. ft	Yes
14	Bath	2'10" x 5'9"	16 sq. ft	Yes
15	Living Room	17'10" x 29'9"	530 sq. ft	Yes
16	Pantry	3'11" x 4'7"	18 sq. ft	Yes
17	Bath	9'2" x 9'0"	82 sq. ft	Yes

1 Floor 1 - Basement



Dimensions: 36'0" x 56'10"
Area: 2045 sq. ft
Counted as living area: No

Heated: Yes
Finished: No
Enclosed: Yes
Contiguous: Yes
Permitted: Yes
Wet space: No
Addition: No
Conversion: No

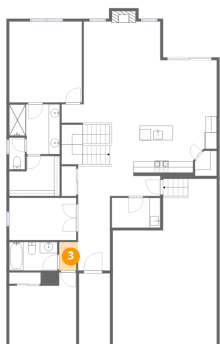
2 Floor 2 - Bedroom



Dimensions: 12'1" x 13'2"
Area: 159 sq. ft
Counted as living area: Yes

Heated: Yes
Finished: Yes
Enclosed: Yes
Contiguous: Yes
Permitted: Yes
Wet space: No
Addition: No
Conversion: No

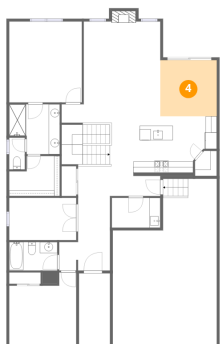
3 Floor 2 - Hall



Dimensions: 3'5" x 5'2"
Area: 18 sq. ft
Counted as living area: Yes

Heated: Yes
Finished: Yes
Enclosed: Yes
Contiguous: Yes
Permitted: Yes
Wet space: No
Addition: No
Conversion: No

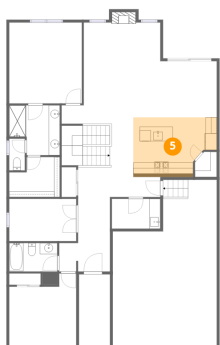
4 Floor 2 - Dining Area



Dimensions: 10'2" x 10'2"
Area: 103 sq. ft
Counted as living area: Yes

Heated: Yes
Finished: Yes
Enclosed: Yes
Contiguous: Yes
Permitted: Yes
Wet space: No
Addition: No
Conversion: No

5 Floor 2 - Kitchen



Dimensions: 15'1" x 10'2"
Area: 153 sq. ft
Counted as living area: Yes

Heated: Yes
Finished: Yes
Enclosed: Yes
Contiguous: Yes
Permitted: Yes
Wet space: No
Addition: No
Conversion: No

6 Floor 2 - Laundry



Dimensions: 8'9" x 5'4"
Area: 47 sq. ft
Counted as living area: Yes

Heated: Yes
Finished: Yes
Enclosed: Yes
Contiguous: Yes
Permitted: Yes
Wet space: No
Addition: No
Conversion: No

7 Floor 2 - Bath



Dimensions: 8'8" x 5'2"
Area: 45 sq. ft
Counted as living area: Yes

Heated: Yes
Finished: Yes
Enclosed: Yes
Contiguous: Yes
Permitted: Yes
Wet space: Yes
Addition: No
Conversion: No

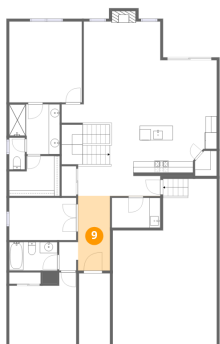
8 Floor 2 - Primary Bedroom



Dimensions: 13'1" x 14'7"
Area: 191 sq. ft
Counted as living area: Yes

Heated: Yes
Finished: Yes
Enclosed: Yes
Contiguous: Yes
Permitted: Yes
Wet space: No
Addition: No
Conversion: No

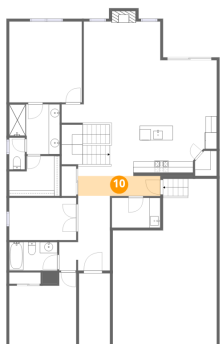
9 Floor 2 - Foyer



Dimensions: 5'9" x 13'6"
Area: 78 sq. ft
Counted as living area: Yes

Heated: Yes
Finished: Yes
Enclosed: Yes
Contiguous: Yes
Permitted: Yes
Wet space: No
Addition: No
Conversion: No

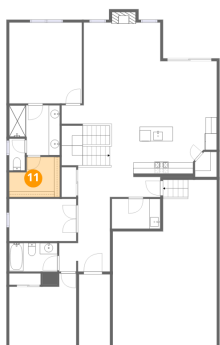
10 Floor 2 - Hall



Dimensions: 14'10" x 3'7"
Area: 53 sq. ft
Counted as living area: Yes

Heated: Yes
Finished: Yes
Enclosed: Yes
Contiguous: Yes
Permitted: Yes
Wet space: No
Addition: No
Conversion: No

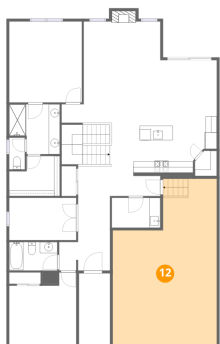
11 Floor 2 - W.I.C.



Dimensions: 9'2" x 7'2"
Area: 66 sq. ft
Counted as living area: Yes

Heated: Yes
Finished: Yes
Enclosed: Yes
Contiguous: Yes
Permitted: Yes
Wet space: No
Addition: No
Conversion: No

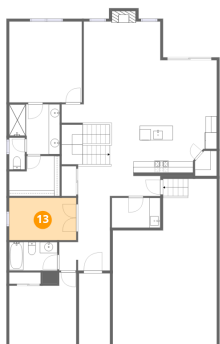
12 Floor 2 - Garage



Dimensions: 18'9" x 30'1"
Area: 564 sq. ft
Counted as living area: No

Heated: No
Finished: No
Enclosed: Yes
Contiguous: Yes
Permitted: Yes
Wet space: No
Addition: No
Conversion: No

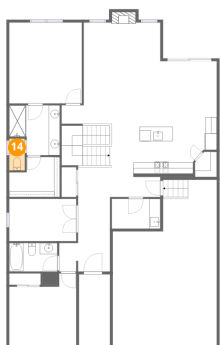
13 Floor 2 - Bedroom



Dimensions: 12'1" x 7'8"
Area: 92 sq. ft
Counted as living area: Yes

Heated: Yes
Finished: Yes
Enclosed: Yes
Contiguous: Yes
Permitted: Yes
Wet space: No
Addition: No
Conversion: No

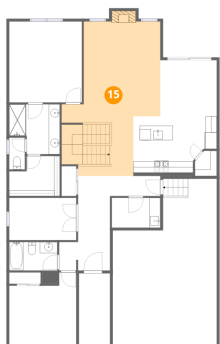
14 Floor 2 - Bath



Dimensions: 2'10" x 5'9"
Area: 16 sq. ft
Counted as living area: Yes

Heated: Yes
Finished: Yes
Enclosed: Yes
Contiguous: Yes
Permitted: Yes
Wet space: Yes
Addition: No
Conversion: No

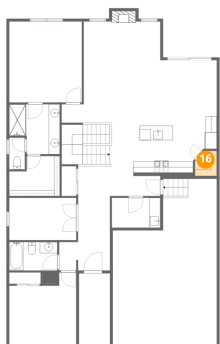
15 Floor 2 - Living Room



Dimensions: 17'10" x 29'9"
Area: 530 sq. ft
Counted as living area: Yes

Heated: Yes
Finished: Yes
Enclosed: Yes
Contiguous: Yes
Permitted: Yes
Wet space: No
Addition: No
Conversion: No

16 Floor 2 - Pantry



Dimensions: 3'11" x 4'7"
Area: 18 sq. ft
Counted as living area: Yes

Heated: Yes
Finished: Yes
Enclosed: Yes
Contiguous: Yes
Permitted: Yes
Wet space: No
Addition: No
Conversion: No

17 Floor 2 - Bath



Dimensions: 9'2" x 9'0"
Area: 82 sq. ft
Counted as living area: Yes

Heated: Yes
Finished: Yes
Enclosed: Yes
Contiguous: Yes
Permitted: Yes
Wet space: Yes
Addition: No
Conversion: No