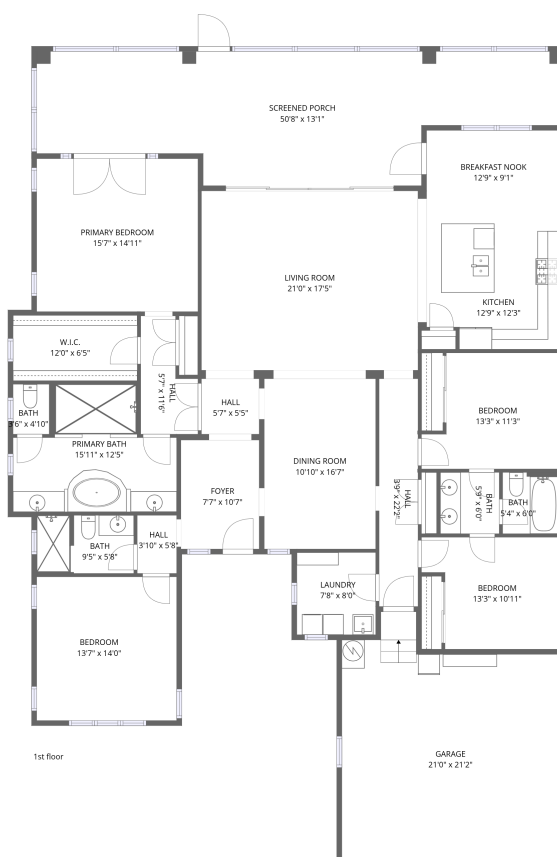


Home data report

904 Riverscape Street, Bradenton, Manatee County, Florida,
United States, 34208



Total Area: 2375 sq. ft

1st Floor: 2375 sq. ft

Excluded: Garage 434 sq. ft, Screened porch 532 sq. ft, Walls: 194 sq. ft

Property summary



1
Floors



4
Bedrooms



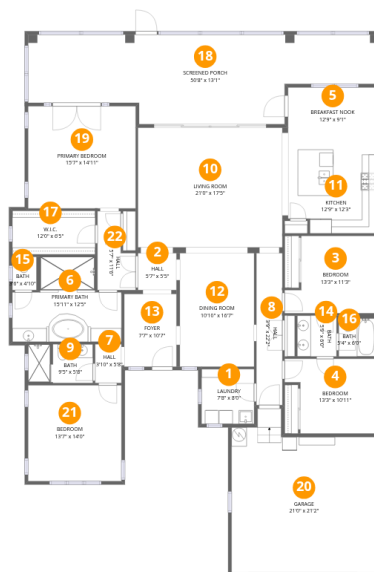
3
Bathrooms



1
Garages

Home data report

904 Riverscape Street, Bradenton, Manatee County, Florida, United States, 34208



Room dimensions

Floor 1

Total:2375sqft Excluded: 966sqft

#		Dimensions	sqft	Counted as living area
1	Laundry	7'8" x 8'0"	61 sq. ft	Yes
2	Hall	5'7" x 5'5"	30 sq. ft	Yes
3	Bedroom	13'3" x 11'3"	150 sq. ft	Yes
4	Bedroom	13'3" x 10'11"	144 sq. ft	Yes
5	Breakfast Nook	12'9" x 9'1"	116 sq. ft	Yes
6	Primary Bath	15'11" x 12'5"	197 sq. ft	Yes
7	Hall	3'10" x 5'8"	22 sq. ft	Yes
8	Hall	3'9" x 22'2"	84 sq. ft	Yes
9	Bath	9'5" x 5'8"	53 sq. ft	Yes
10	Living Room	21'0" x 17'5"	367 sq. ft	Yes
11	Kitchen	12'9" x 12'3"	156 sq. ft	Yes

Home data report

**904 Riverscape Street, Bradenton, Manatee County, Florida,
United States, 34208**

#		Dimensions	sqft	Counted as living area
12	Dining Room	10'10" x 16'7"	179 sq. ft	Yes
13	Foyer	7'7" x 10'7"	81 sq. ft	Yes
14	Bath	5'9" x 6'0"	34 sq. ft	Yes
15	Bath	3'6" x 4'10"	17 sq. ft	Yes
16	Bath	5'4" x 6'0"	32 sq. ft	Yes
17	W.I.C.	12'0" x 6'5"	77 sq. ft	Yes
18	Screened Porch	50'8" x 13'1"	661 sq. ft	No
19	Primary Bedroom	15'7" x 14'11"	232 sq. ft	Yes
20	Garage	21'0" x 21'2"	444 sq. ft	No
21	Bedroom	13'7" x 14'0"	190 sq. ft	Yes
22	Hall	5'7" x 11'6"	64 sq. ft	Yes

1 Floor 1 - Laundry



Dimensions: 7'8" x 8'0"
Area: 61 sq. ft
Counted as living area: Yes

Heated: Yes
Finished: Yes
Enclosed: Yes
Contiguous: Yes
Permitted: Yes
Wet space: No
Addition: No
Conversion: No

2 Floor 1 - Hall



Dimensions: 5'7" x 5'5"
Area: 30 sq. ft
Counted as living area: Yes

Heated: Yes
Finished: Yes
Enclosed: Yes
Contiguous: Yes
Permitted: Yes
Wet space: No
Addition: No
Conversion: No

904 Riverscape Street, Bradenton, Manatee County, Florida,
United States, 34208

3 Floor 1 - Bedroom



Dimensions: 13'3" x 11'3"
Area: 150 sq. ft
Counted as living area: Yes

Heated: Yes
Finished: Yes
Enclosed: Yes
Contiguous: Yes
Permitted: Yes
Wet space: No
Addition: No
Conversion: No

4 Floor 1 - Bedroom



Dimensions: 13'3" x 10'11"
Area: 144 sq. ft
Counted as living area: Yes

Heated: Yes
Finished: Yes
Enclosed: Yes
Contiguous: Yes
Permitted: Yes
Wet space: No
Addition: No
Conversion: No

5 Floor 1 - Breakfast Nook



Dimensions: 12'9" x 9'1"
Area: 116 sq. ft
Counted as living area: Yes

Heated: Yes
Finished: Yes
Enclosed: Yes
Contiguous: Yes
Permitted: Yes
Wet space: No
Addition: No
Conversion: No

6 Floor 1 - Primary Bath



Dimensions: 15'11" x 12'5"
Area: 197 sq. ft
Counted as living area: Yes

Heated: Yes
Finished: Yes
Enclosed: Yes
Contiguous: Yes
Permitted: Yes
Wet space: Yes
Addition: No
Conversion: No

7 Floor 1 - Hall



Dimensions: 3'10" x 5'8"
Area: 22 sq. ft
Counted as living area: Yes

Heated: Yes
Finished: Yes
Enclosed: Yes
Contiguous: Yes
Permitted: Yes
Wet space: No
Addition: No
Conversion: No

8 Floor 1 - Hall



Dimensions: 3'9" x 22'2"
Area: 84 sq. ft
Counted as living area: Yes

Heated: Yes
Finished: Yes
Enclosed: Yes
Contiguous: Yes
Permitted: Yes
Wet space: No
Addition: No
Conversion: No

904 Riverscape Street, Bradenton, Manatee County, Florida,
United States, 34208

9 Floor 1 - Bath



Dimensions: 9'5" x 5'8"
Area: 53 sq. ft
Counted as living area: Yes

Heated: Yes
Finished: Yes
Enclosed: Yes
Contiguous: Yes
Permitted: Yes
Wet space: Yes
Addition: No
Conversion: No

10 Floor 1 - Living Room



Dimensions: 21'0" x 17'5"
Area: 367 sq. ft
Counted as living area: Yes

Heated: Yes
Finished: Yes
Enclosed: Yes
Contiguous: Yes
Permitted: Yes
Wet space: No
Addition: No
Conversion: No

11 Floor 1 - Kitchen



Dimensions: 12'9" x 12'3"
Area: 156 sq. ft
Counted as living area: Yes

Heated: Yes
Finished: Yes
Enclosed: Yes
Contiguous: Yes
Permitted: Yes
Wet space: No
Addition: No
Conversion: No

12 Floor 1 - Dining Room



Dimensions: 10'10" x 16'7"
Area: 179 sq. ft
Counted as living area: Yes

Heated: Yes
Finished: Yes
Enclosed: Yes
Contiguous: Yes
Permitted: Yes
Wet space: No
Addition: No
Conversion: No

13 Floor 1 - Foyer



Dimensions: 7'7" x 10'7"
Area: 81 sq. ft
Counted as living area: Yes

Heated: Yes
Finished: Yes
Enclosed: Yes
Contiguous: Yes
Permitted: Yes
Wet space: No
Addition: No
Conversion: No

14 Floor 1 - Bath



Dimensions: 5'9" x 6'0"
Area: 34 sq. ft
Counted as living area: Yes

Heated: Yes
Finished: Yes
Enclosed: Yes
Contiguous: Yes
Permitted: Yes
Wet space: Yes
Addition: No
Conversion: No

904 Riverscape Street, Bradenton, Manatee County, Florida,
United States, 34208

15 Floor 1 - Bath



Dimensions: 3'6" x 4'10"
Area: 17 sq. ft
Counted as living area: Yes

Heated: Yes
Finished: Yes
Enclosed: Yes
Contiguous: Yes
Permitted: Yes
Wet space: Yes
Addition: No
Conversion: No

16 Floor 1 - Bath



Dimensions: 5'4" x 6'0"
Area: 32 sq. ft
Counted as living area: Yes

Heated: Yes
Finished: Yes
Enclosed: Yes
Contiguous: Yes
Permitted: Yes
Wet space: Yes
Addition: No
Conversion: No

17 Floor 1 - W.I.C.



Dimensions: 12'0" x 6'5"
Area: 77 sq. ft
Counted as living area: Yes

Heated: Yes
Finished: Yes
Enclosed: Yes
Contiguous: Yes
Permitted: Yes
Wet space: No
Addition: No
Conversion: No

904 Riverscape Street, Bradenton, Manatee County, Florida,
United States, 34208

18 Floor 1 - Screened Porch



Dimensions: 50'8" x 13'1"
Area: 661 sq. ft
Counted as living area: No

Heated: No
Finished: No
Enclosed: No
Contiguous: Yes
Permitted: Yes
Wet space: No
Addition: No
Conversion: No

19 Floor 1 - Primary Bedroom



Dimensions: 15'7" x 14'11"
Area: 232 sq. ft
Counted as living area: Yes

Heated: Yes
Finished: Yes
Enclosed: Yes
Contiguous: Yes
Permitted: Yes
Wet space: No
Addition: No
Conversion: No

20 Floor 1 - Garage



Dimensions: 21'0" x 21'2"
Area: 444 sq. ft
Counted as living area: No

Heated: No
Finished: No
Enclosed: Yes
Contiguous: Yes
Permitted: Yes
Wet space: No
Addition: No
Conversion: No

904 Riverscape Street, Bradenton, Manatee County, Florida,
United States, 34208

21 Floor 1 - Bedroom



Dimensions: 13'7" x 14'0"
Area: 190 sq. ft
Counted as living area: Yes

Heated: Yes
Finished: Yes
Enclosed: Yes
Contiguous: Yes
Permitted: Yes
Wet space: No
Addition: No
Conversion: No

22 Floor 1 - Hall



Dimensions: 5'7" x 11'6"
Area: 64 sq. ft
Counted as living area: Yes

Heated: Yes
Finished: Yes
Enclosed: Yes
Contiguous: Yes
Permitted: Yes
Wet space: No
Addition: No
Conversion: No