

## Home data report

1511 Central Avenue, Wilmette, Cook County, Illinois, United States, 60091



**Total Area: 4230 sq. ft**

Basement 1: 1009 sq. ft, 1st Floor: 1433 sq. ft, 2nd Floor: 1407 sq. ft, 3rd Floor: 381 sq. ft  
Excluded: Utility 314 sq. ft, Porch 146 sq. ft, Deck 99 sq. ft, Low ceiling 183 sq. ft, Attic 67 sq. ft, Walls: 312 sq. ft

## Property summary

 **4** Floors

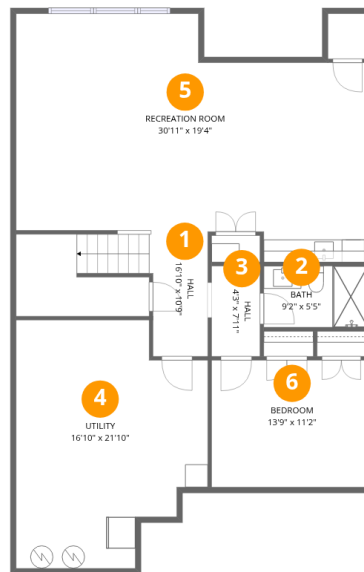
 **7** Bedrooms

 **5** Bathrooms

 **2** Half baths

## Home data report

1511 Central Avenue, Wilmette, Cook County, Illinois, United States, 60091



## Room dimensions

Floor 1 Below grade

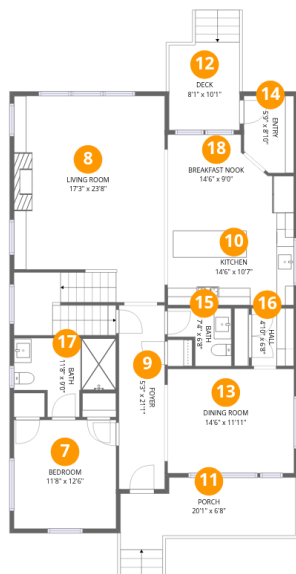
Total:1009sqft

Excluded: 314sqft

#		Dimensions	sqft	Counted as living area
1	Hall	16'10" x 10'9"	181 sq. ft	Yes
2	Bath	9'2" x 5'5"	49 sq. ft	Yes
3	Hall	4'3" x 7'11"	34 sq. ft	Yes
4	Utility	16'10" x 21'10"	367 sq. ft	No
5	Recreation Room	30'11" x 19'4"	599 sq. ft	Yes
6	Bedroom	13'9" x 11'2"	153 sq. ft	Yes

## Home data report

1511 Central Avenue, Wilmette, Cook County, Illinois, United States, 60091



## Room dimensions

Floor 2

Total:1433sqft Excluded: 245sqft

#		Dimensions	sqft	Counted as living area
7	Bedroom	11'8" x 12'6"	146 sq. ft	Yes
8	Living Room	17'3" x 23'8"	409 sq. ft	Yes
9	Foyer	5'3" x 21'1"	110 sq. ft	Yes
10	Kitchen	14'6" x 10'7"	154 sq. ft	Yes
11	Porch	20'1" x 6'8"	133 sq. ft	No
12	Deck	8'1" x 10'1"	82 sq. ft	No
13	Dining Room	14'6" x 11'11"	173 sq. ft	Yes
14	Entry	5'9" x 8'10"	51 sq. ft	Yes
15	Bath	7'4" x 6'8"	48 sq. ft	Yes
16	Hall	4'10" x 6'8"	32 sq. ft	Yes
17	Bath	11'8" x 9'0"	106 sq. ft	Yes

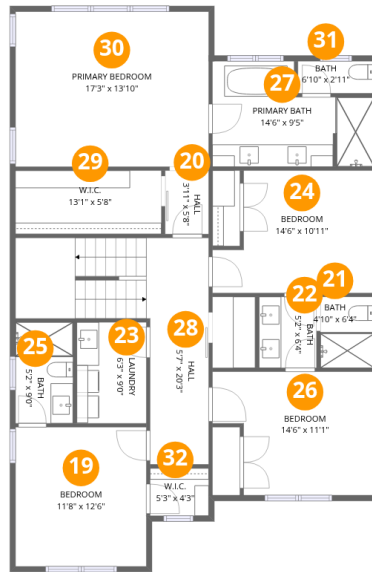
Home data report

**1511 Central Avenue, Wilmette, Cook County, Illinois, United States, 60091**

#		Dimensions	sqft	Counted as living area
18	Breakfast Nook	14'6" x 9'0"	130 sq. ft	Yes

Home data report

1511 Central Avenue, Wilmette, Cook County, Illinois, United States, 60091



## Room dimensions

Floor 3

Total:1407sqft

Excluded: 0sqft

#		Dimensions	sqft	Counted as living area
19	Bedroom	11'8" x 12'6"	146 sq. ft	Yes
20	Hall	3'11" x 5'8"	22 sq. ft	Yes
21	Bath	4'10" x 6'4"	31 sq. ft	Yes
22	Bath	5'2" x 6'4"	33 sq. ft	Yes
23	Laundry	6'3" x 9'0"	56 sq. ft	Yes
24	Bedroom	14'6" x 10'11"	159 sq. ft	Yes
25	Bath	5'2" x 9'0"	46 sq. ft	Yes
26	Bedroom	14'6" x 11'1"	160 sq. ft	Yes
27	Primary Bath	14'6" x 9'5"	137 sq. ft	Yes
28	Hall	5'7" x 20'3"	113 sq. ft	Yes
29	W.I.C.	13'1" x 5'8"	74 sq. ft	Yes

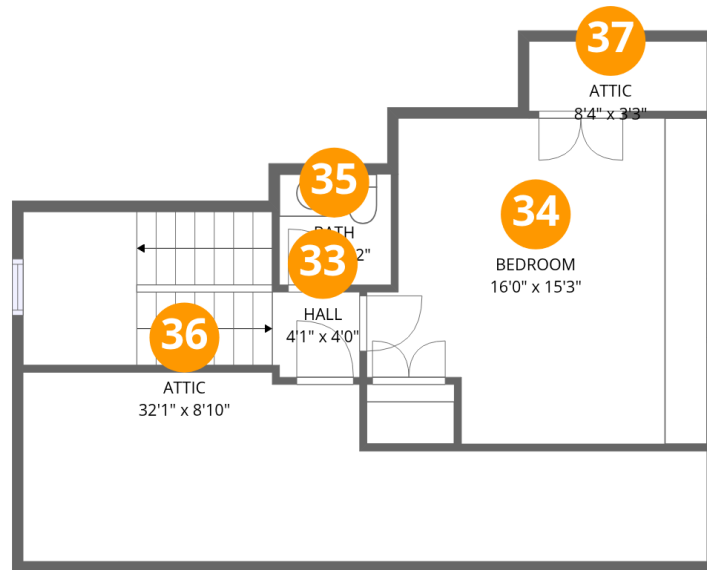
Home data report

**1511 Central Avenue, Wilmette, Cook County, Illinois, United States, 60091**

#		Dimensions	sqft	Counted as living area
30	Primary Bedroom	17'3" x 13'10"	240 sq. ft	Yes
31	Bath	6'10" x 2'11"	20 sq. ft	Yes
32	W.I.C.	5'3" x 4'3"	22 sq. ft	Yes

Home data report

1511 Central Avenue, Wilmette, Cook County, Illinois, United States, 60091



## Room dimensions

Floor 4

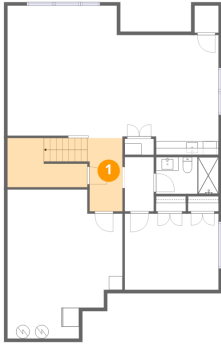
Total:381sqft

Excluded: 250sqft

#		Dimensions	sqft	Counted as living area
33	Hall	4'1" x 4'0"	16 sq. ft	Yes
34	Bedroom	16'0" x 15'3"	244 sq. ft	Yes
35	Bath	5'3" x 5'2"	27 sq. ft	Yes
36	Attic	32'1" x 8'10"	285 sq. ft	No
37	Attic	8'4" x 3'3"	27 sq. ft	No

1511 Central Avenue, Wilmette, Cook County, Illinois, United States, 60091

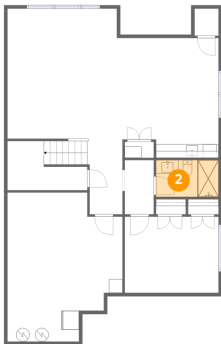
## 1 Floor 1 - Hall



Dimensions: 16'10" x 10'9"  
Area: 181 sq. ft  
Counted as living area: Yes

Heated: Yes  
Finished: Yes  
Enclosed: Yes  
Contiguous: Yes  
Permitted: Yes  
Wet space: No  
Addition: No  
Conversion: No

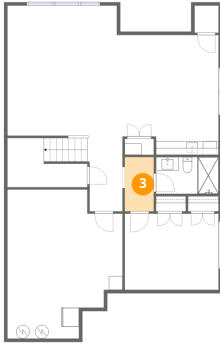
## 2 Floor 1 - Bath



Dimensions: 9'2" x 5'5"  
Area: 49 sq. ft  
Counted as living area: Yes

Heated: Yes  
Finished: Yes  
Enclosed: Yes  
Contiguous: Yes  
Permitted: Yes  
Wet space: Yes  
Addition: No  
Conversion: No

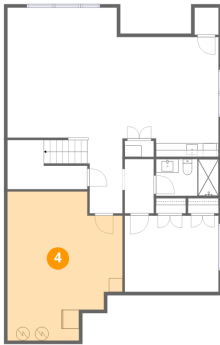
**3** Floor 1 - Hall



Dimensions: 4'3" x 7'11"  
Area: 34 sq. ft  
Counted as living area: Yes

Heated: Yes  
Finished: Yes  
Enclosed: Yes  
Contiguous: Yes  
Permitted: Yes  
Wet space: No  
Addition: No  
Conversion: No

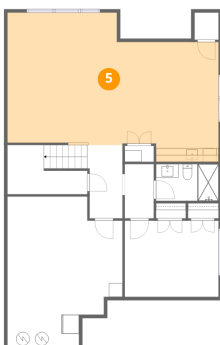
**4** Floor 1 - Utility



Dimensions: 16'10" x 21'10"  
Area: 367 sq. ft  
Counted as living area: No

Heated: Yes  
Finished: No  
Enclosed: Yes  
Contiguous: Yes  
Permitted: Yes  
Wet space: No  
Addition: No  
Conversion: No

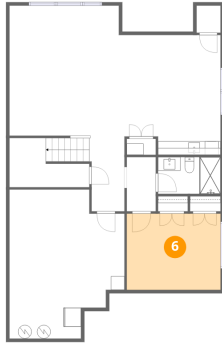
**5** Floor 1 - Recreation Room



Dimensions: 30'11" x 19'4"  
Area: 599 sq. ft  
Counted as living area: Yes

Heated: Yes  
Finished: Yes  
Enclosed: Yes  
Contiguous: Yes  
Permitted: Yes  
Wet space: No  
Addition: No  
Conversion: No

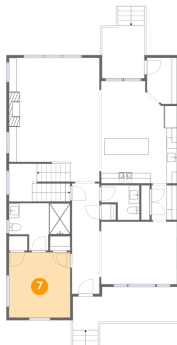
**6** Floor 1 - Bedroom



Dimensions: 13'9" x 11'2"  
Area: 153 sq. ft  
Counted as living area: Yes

Heated: Yes  
Finished: Yes  
Enclosed: Yes  
Contiguous: Yes  
Permitted: Yes  
Wet space: No  
Addition: No  
Conversion: No

**7** Floor 2 - Bedroom



Dimensions: 11'8" x 12'6"  
Area: 146 sq. ft  
Counted as living area: Yes

Heated: Yes  
Finished: Yes  
Enclosed: Yes  
Contiguous: Yes  
Permitted: Yes  
Wet space: No  
Addition: No  
Conversion: No

**8** Floor 2 - Living Room



Dimensions: 17'3" x 23'8"  
Area: 409 sq. ft  
Counted as living area: Yes

Heated: Yes  
Finished: Yes  
Enclosed: Yes  
Contiguous: Yes  
Permitted: Yes  
Wet space: No  
Addition: No  
Conversion: No

**9** Floor 2 - Foyer



Dimensions: 5'3" x 21'1"  
Area: 110 sq. ft  
Counted as living area: Yes

Heated: Yes  
Finished: Yes  
Enclosed: Yes  
Contiguous: Yes  
Permitted: Yes  
Wet space: No  
Addition: No  
Conversion: No

**10** Floor 2 - Kitchen



Dimensions: 14'6" x 10'7"  
Area: 154 sq. ft  
Counted as living area: Yes

Heated: Yes  
Finished: Yes  
Enclosed: Yes  
Contiguous: Yes  
Permitted: Yes  
Wet space: No  
Addition: No  
Conversion: No

**11** Floor 2 - Porch



Dimensions: 20'1" x 6'8"  
Area: 133 sq. ft  
Counted as living area: No

Heated: No  
Finished: No  
Enclosed: No  
Contiguous: Yes  
Permitted: Yes  
Wet space: No  
Addition: No  
Conversion: No

**12** Floor 2 - Deck



Dimensions: 8'1" x 10'1"  
Area: 82 sq. ft  
Counted as living area: No

Heated: No  
Finished: No  
Enclosed: No  
Contiguous: Yes  
Permitted: Yes  
Wet space: No  
Addition: No  
Conversion: No

**13** Floor 2 - Dining Room



Dimensions: 14'6" x 11'11"  
Area: 173 sq. ft  
Counted as living area: Yes

Heated: Yes  
Finished: Yes  
Enclosed: Yes  
Contiguous: Yes  
Permitted: Yes  
Wet space: No  
Addition: No  
Conversion: No

**14** Floor 2 - Entry



Dimensions: 5'9" x 8'10"  
Area: 51 sq. ft  
Counted as living area: Yes

Heated: Yes  
Finished: Yes  
Enclosed: Yes  
Contiguous: Yes  
Permitted: Yes  
Wet space: No  
Addition: No  
Conversion: No

**15** Floor 2 - Bath



Dimensions: 7'4" x 6'8"  
Area: 48 sq. ft  
Counted as living area: Yes

Heated: Yes  
Finished: Yes  
Enclosed: Yes  
Contiguous: Yes  
Permitted: Yes  
Wet space: Yes  
Addition: No  
Conversion: No

**16** Floor 2 - Hall



Dimensions: 4'10" x 6'8"  
Area: 32 sq. ft  
Counted as living area: Yes

Heated: Yes  
Finished: Yes  
Enclosed: Yes  
Contiguous: Yes  
Permitted: Yes  
Wet space: No  
Addition: No  
Conversion: No

**17** Floor 2 - Bath

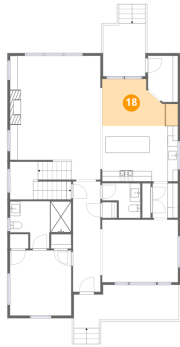


Dimensions: 11'8" x 9'0"  
Area: 106 sq. ft  
Counted as living area: Yes

Heated: Yes  
Finished: Yes  
Enclosed: Yes  
Contiguous: Yes  
Permitted: Yes  
Wet space: Yes  
Addition: No  
Conversion: No

**18** Floor 2 - Breakfast Nook

---

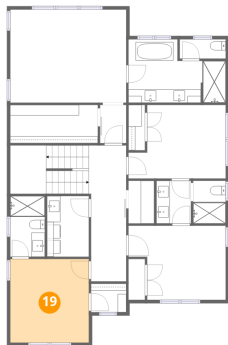


Dimensions: 14'6" x 9'0"  
Area: 130 sq. ft  
Counted as living area: Yes

Heated: Yes  
Finished: Yes  
Enclosed: Yes  
Contiguous: Yes  
Permitted: Yes  
Wet space: No  
Addition: No  
Conversion: No

**19** Floor 3 - Bedroom

---

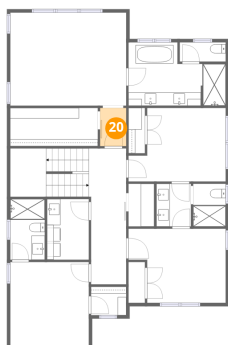


Dimensions: 11'8" x 12'6"  
Area: 146 sq. ft  
Counted as living area: Yes

Heated: Yes  
Finished: Yes  
Enclosed: Yes  
Contiguous: Yes  
Permitted: Yes  
Wet space: No  
Addition: No  
Conversion: No

**20** Floor 3 - Hall

---



Dimensions: 3'11" x 5'8"  
Area: 22 sq. ft  
Counted as living area: Yes

Heated: Yes  
Finished: Yes  
Enclosed: Yes  
Contiguous: Yes  
Permitted: Yes  
Wet space: No  
Addition: No  
Conversion: No

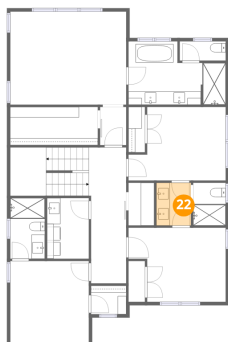
**21** Floor 3 - Bath



Dimensions: 4'10" x 6'4"  
Area: 31 sq. ft  
Counted as living area: Yes

Heated: Yes  
Finished: Yes  
Enclosed: Yes  
Contiguous: Yes  
Permitted: Yes  
Wet space: Yes  
Addition: No  
Conversion: No

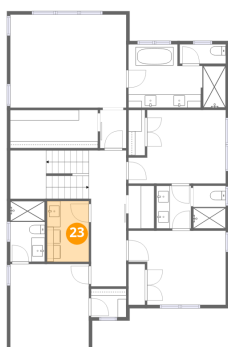
**22** Floor 3 - Bath



Dimensions: 5'2" x 6'4"  
Area: 33 sq. ft  
Counted as living area: Yes

Heated: Yes  
Finished: Yes  
Enclosed: Yes  
Contiguous: Yes  
Permitted: Yes  
Wet space: Yes  
Addition: No  
Conversion: No

**23** Floor 3 - Laundry



Dimensions: 6'3" x 9'0"  
Area: 56 sq. ft  
Counted as living area: Yes

Heated: Yes  
Finished: Yes  
Enclosed: Yes  
Contiguous: Yes  
Permitted: Yes  
Wet space: No  
Addition: No  
Conversion: No

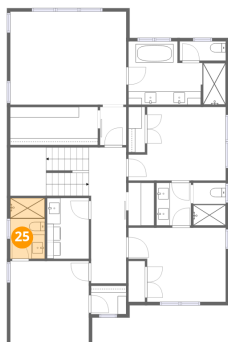
**24** Floor 3 - Bedroom



Dimensions: 14'6" x 10'11"  
Area: 159 sq. ft  
Counted as living area: Yes

Heated: Yes  
Finished: Yes  
Enclosed: Yes  
Contiguous: Yes  
Permitted: Yes  
Wet space: No  
Addition: No  
Conversion: No

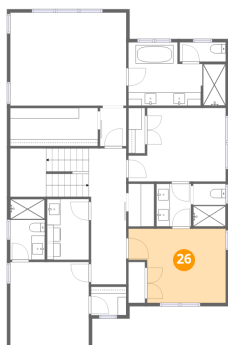
**25** Floor 3 - Bath



Dimensions: 5'2" x 9'0"  
Area: 46 sq. ft  
Counted as living area: Yes

Heated: Yes  
Finished: Yes  
Enclosed: Yes  
Contiguous: Yes  
Permitted: Yes  
Wet space: Yes  
Addition: No  
Conversion: No

**26** Floor 3 - Bedroom

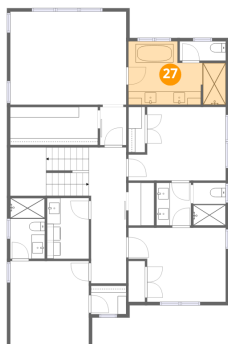


Dimensions: 14'6" x 11'1"  
Area: 160 sq. ft  
Counted as living area: Yes

Heated: Yes  
Finished: Yes  
Enclosed: Yes  
Contiguous: Yes  
Permitted: Yes  
Wet space: No  
Addition: No  
Conversion: No

**27** Floor 3 - Primary Bath

---

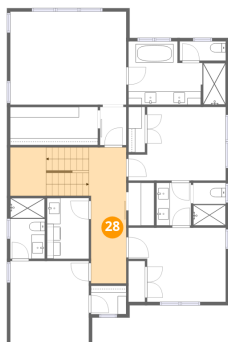


Dimensions: 14'6" x 9'5"  
Area: 137 sq. ft  
Counted as living area: Yes

Heated: Yes  
Finished: Yes  
Enclosed: Yes  
Contiguous: Yes  
Permitted: Yes  
Wet space: Yes  
Addition: No  
Conversion: No

**28** Floor 3 - Hall

---



Dimensions: 5'7" x 20'3"  
Area: 113 sq. ft  
Counted as living area: Yes

Heated: Yes  
Finished: Yes  
Enclosed: Yes  
Contiguous: Yes  
Permitted: Yes  
Wet space: No  
Addition: No  
Conversion: No

**29** Floor 3 - W.I.C.

---

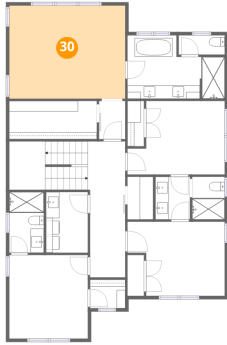


Dimensions: 13'1" x 5'8"  
Area: 74 sq. ft  
Counted as living area: Yes

Heated: Yes  
Finished: Yes  
Enclosed: Yes  
Contiguous: Yes  
Permitted: Yes  
Wet space: No  
Addition: No  
Conversion: No

**30** Floor 3 - Primary Bedroom

---

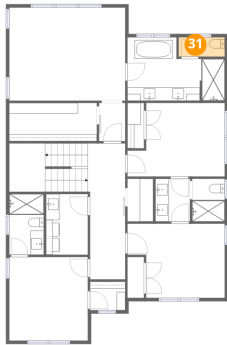


Dimensions: 17'3" x 13'10"  
Area: 240 sq. ft  
Counted as living area: Yes

Heated: Yes  
Finished: Yes  
Enclosed: Yes  
Contiguous: Yes  
Permitted: Yes  
Wet space: No  
Addition: No  
Conversion: No

**31** Floor 3 - Bath

---

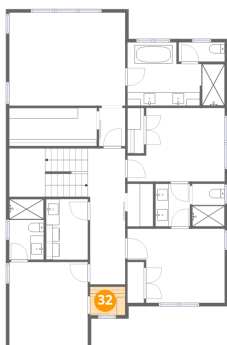


Dimensions: 6'10" x 2'11"  
Area: 20 sq. ft  
Counted as living area: Yes

Heated: Yes  
Finished: Yes  
Enclosed: Yes  
Contiguous: Yes  
Permitted: Yes  
Wet space: No  
Addition: No  
Conversion: No

**32** Floor 3 - W.I.C.

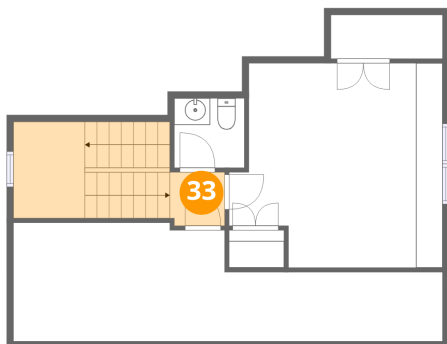
---



Dimensions: 5'3" x 4'3"  
Area: 22 sq. ft  
Counted as living area: Yes

Heated: Yes  
Finished: Yes  
Enclosed: Yes  
Contiguous: Yes  
Permitted: Yes  
Wet space: No  
Addition: No  
Conversion: No

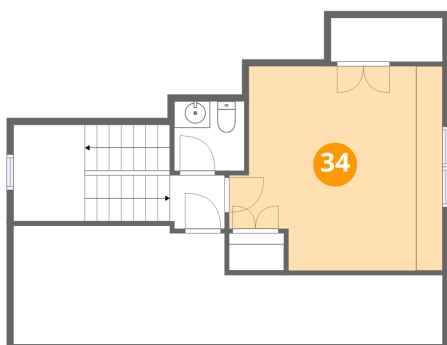
**33** Floor 4 - Hall



Dimensions: 4'1" x 4'0"  
Area: 16 sq. ft  
Counted as living area: Yes

Heated: Yes  
Finished: Yes  
Enclosed: Yes  
Contiguous: Yes  
Permitted: Yes  
Wet space: No  
Addition: No  
Conversion: No

**34** Floor 4 - Bedroom



Dimensions: 16'0" x 15'3"  
Area: 244 sq. ft  
Counted as living area: Yes

Heated: Yes  
Finished: Yes  
Enclosed: Yes  
Contiguous: Yes  
Permitted: Yes  
Wet space: No  
Addition: No  
Conversion: No

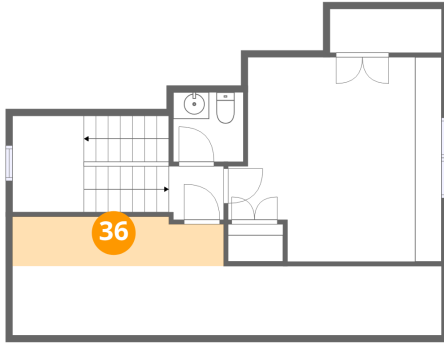
**35** Floor 4 - Bath



Dimensions: 5'3" x 5'2"  
Area: 27 sq. ft  
Counted as living area: Yes

Heated: Yes  
Finished: Yes  
Enclosed: Yes  
Contiguous: Yes  
Permitted: Yes  
Wet space: Yes  
Addition: No  
Conversion: No

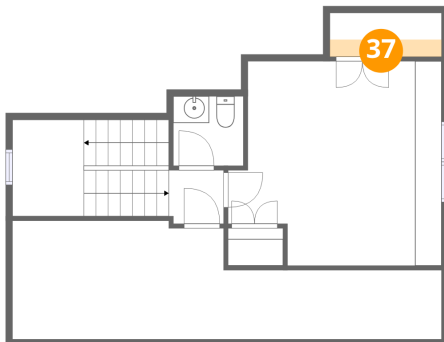
**36** Floor 4 - Attic



Dimensions: 32'1" x 8'10"  
Area: 285 sq. ft  
Counted as living area: No

Heated: No  
Finished: No  
Enclosed: Yes  
Contiguous: Yes  
Permitted: Yes  
Wet space: No  
Addition: No  
Conversion: No

**37** Floor 4 - Attic



Dimensions: 8'4" x 3'3"  
Area: 27 sq. ft  
Counted as living area: No

Heated: No  
Finished: No  
Enclosed: Yes  
Contiguous: Yes  
Permitted: Yes  
Wet space: No  
Addition: No  
Conversion: No