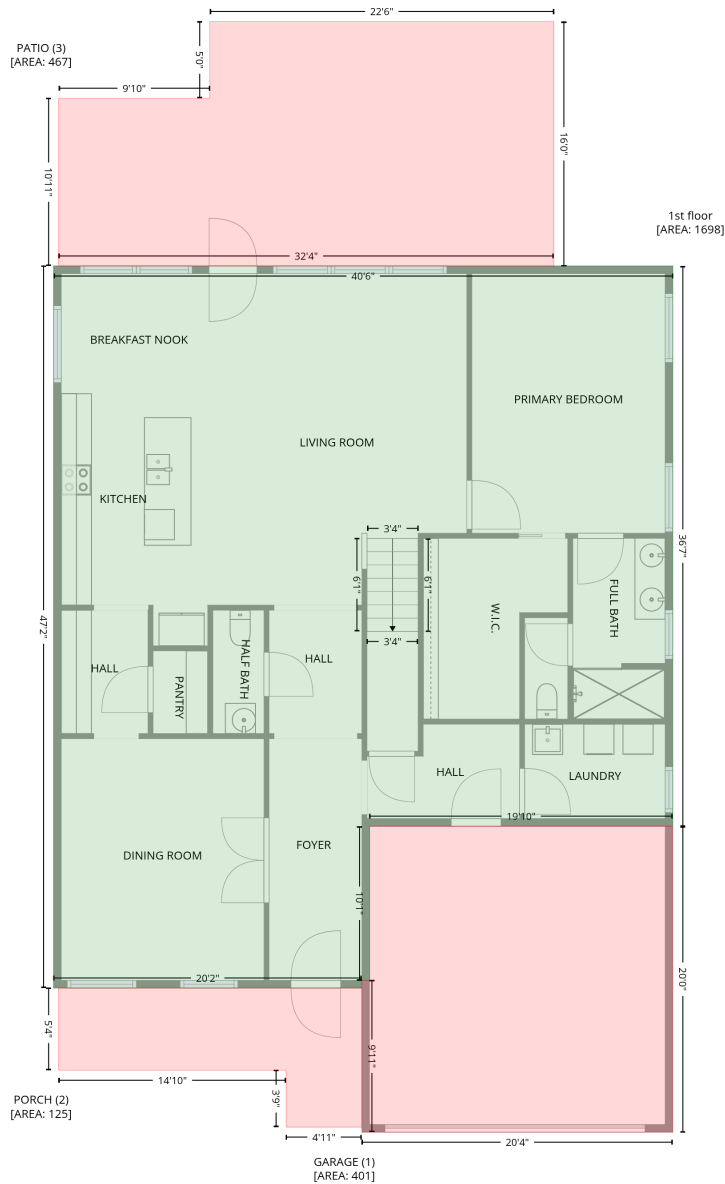


# 108 King Arthur Court, Morrisville, Durham County, North Carolina, United States, 27560

Gross Living Area: 2712 sq. ft

## Level 1



| Space                       | Area (sq. ft) | Calculation  |
|-----------------------------|---------------|--|
| 1st floor<br>(Living area)  | 1698          | Coordinate Polygon Area Algorithm using inches<br>$-((546.9 + 546.9) * (275.8 - 714.9) + (546.9 + 309.1) * (714.9 - 714.9) + (309.1 + 309.1) * (714.9 - 835.6) + (309.1 + 303.1) * (835.6 - 835.6) + (303.1 + 303.1) * (835.6 - 841.6) + (303.1 + 61.3) * (841.6 - 841.6) + (61.3 + 61.3) * (841.6 - 275.8) + (61.3 + 546.9) * (275.8 - 275.8)) * 0.5 * 0.00694$ |
| GARAGE<br>(Non-living area) | 401           | $-((546.9 + 546.9) * (714.9 - 954.6) + (546.9 + 303.1) * (954.6 - 954.6) + (303.1 + 303.1) * (954.6 - 835.6) + (303.1 + 309.1) * (835.6 - 835.6) + (309.1 + 309.1) * (835.6 - 714.9) + (309.1 + 546.9) * (714.9 - 714.9)) * 0.5 * 0.00694$   |

# 108 King Arthur Court, Morrisville, Durham County, North Carolina, United States, 27560

Gross Living Area: 2712 sq. ft

## Level 1

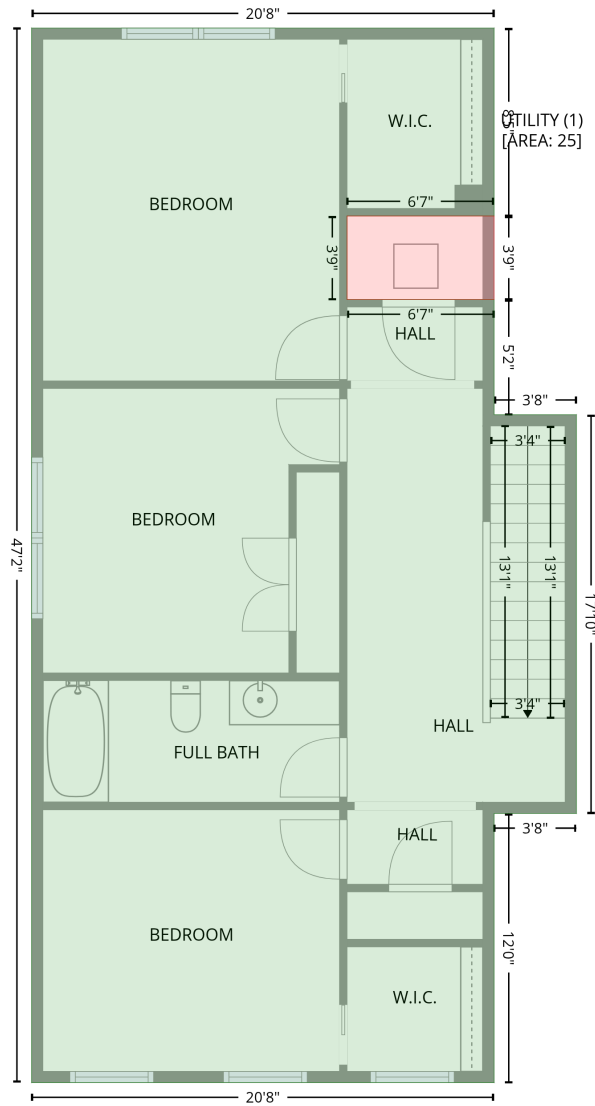
| Space                      | Area (sq. ft) | Calculation <small>Coordinate Polygon Area Algorithm using inches</small>  |
|----------------------------|---------------|--|
| PORCH<br>(Non-living area) | 125           | $-((303.1 + 303.1) * (841.6 - 950.6) + (303.1 + 243.7) * (950.6 - 950.6) + (243.7 + 243.7) * (950.6 - 906.1) + (243.7 + 65.3) * (906.1 - 906.1) + (65.3 + 65.3) * (906.1 - 841.6) + (65.3 + 303.1) * (841.6 - 841.6)) * 0.5 * 0.00694$ |
| PATIO<br>(Non-living area) | 467           | $-((453.6 + 453.6) * (84.2 - 275.8) + (453.6 + 65.3) * (275.8 - 275.8) + (65.3 + 65.3) * (275.8 - 144.3) + (65.3 + 183.8) * (144.3 - 144.3) + (183.8 + 183.8) * (144.3 - 84.2) + (183.8 + 453.6) * (84.2 - 84.2)) * 0.5 * 0.00694$     |

# 108 King Arthur Court, Morrisville, Durham County, North Carolina, United States, 27560

Gross Living Area: 2712 sq. ft

## Level 2

2nd floor  
[AREA: 1014]



| Space                        | Area (sq. ft) | Calculation  |
|------------------------------|---------------|--|
| 2nd floor<br>(Living area)   | 1014          | Coordinate Polygon Area Algorithm using inches<br>$-((309.1 + 309.1) * (275.8 - 376.6) + (309.1 + 230.3) * (376.6 - 376.6) + (230.3 + 230.3) * (376.6 - 421.5) + (230.3 + 309.1) * (421.5 - 421.5) + (309.1 + 309.1) * (421.5 - 483.2) + (309.1 + 353.1) * (483.2 - 483.2) + (353.1 + 353.1) * (483.2 - 697.2) + (353.1 + 309.1) * (697.2 - 697.2) + (309.1 + 309.1) * (697.2 - 841.6) + (309.1 + 61.3) * (841.6 - 841.6) + (61.3 + 61.3) * (841.6 - 275.8) + (61.3 + 309.1) * (275.8 - 275.8)) * 0.5 * 0.00694$ |
| UTILITY<br>(Non-living area) | 25            | $-((309.1 + 309.1) * (376.6 - 421.5) + (309.1 + 230.3) * (421.5 - 421.5) + (230.3 + 230.3) * (421.5 - 376.6) + (230.3 + 309.1) * (376.6 - 376.6)) * 0.5 * 0.00694$   |