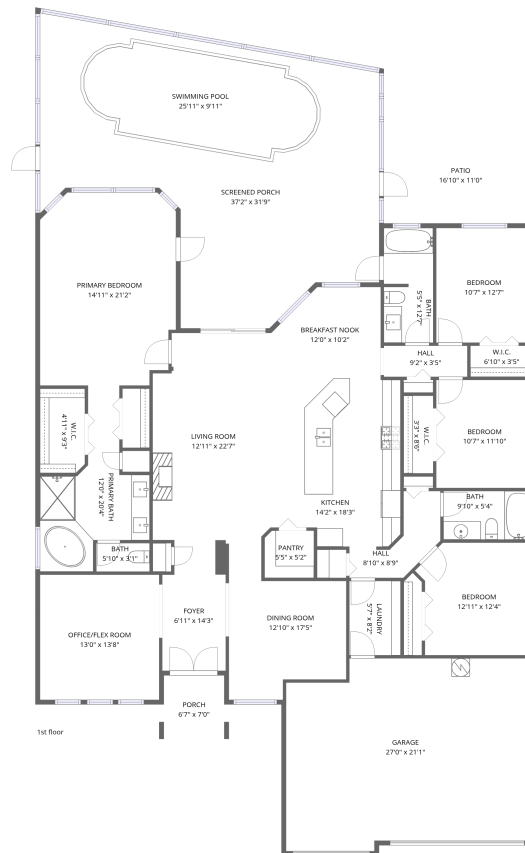


Home data report

8843 Torchwood Drive, Trinity, Pasco County, Florida, United States, 34655



Total Area: 3021 sq. ft

1st Floor: 3021 sq. ft

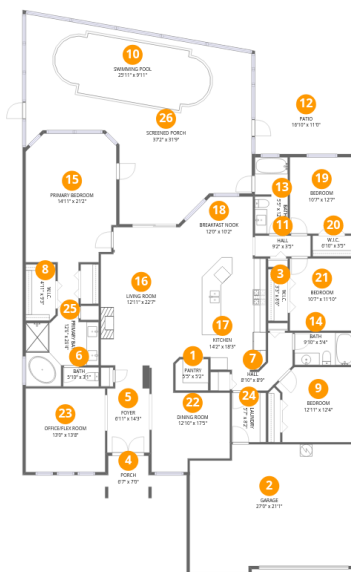
Excluded: Porch 46 sq. ft, Screened porch 658 sq. ft, Patio 186 sq. ft, Walls: 188 sq. ft

Property summary



Home data report

8843 Torchwood Drive, Trinity, Pasco County, Florida, United States, 34655



Room dimensions

Floor 1

Total:3021sqft Excluded: 890sqft

#		Dimensions	sqft	Counted as living area
1	Pantry	5'5" x 5'2"	28 sq. ft	Yes
2	Garage	27'0" x 21'1"	571 sq. ft	Yes
3	W.I.C.	3'3" x 8'6"	28 sq. ft	Yes
4	Porch	6'7" x 7'0"	46 sq. ft	No
5	Foyer	6'11" x 14'3"	99 sq. ft	Yes
6	Bath	5'10" x 3'1"	18 sq. ft	Yes
7	Hall	8'10" x 8'9"	77 sq. ft	Yes
8	W.I.C.	4'11" x 9'3"	45 sq. ft	Yes
9	Bedroom	12'11" x 12'4"	159 sq. ft	Yes
10	Swimming Pool	25'11" x 9'11"	258 sq. ft	No
11	Hall	9'2" x 3'5"	31 sq. ft	Yes

Home data report

8843 Torchwood Drive, Trinity, Pasco County, Florida, United States, 34655

#		Dimensions	sqft	Counted as living area
12	Patio	16'10" x 11'0"	186 sq. ft	No
13	Bath	5'5" x 12'7"	68 sq. ft	Yes
14	Bath	9'10" x 5'4"	52 sq. ft	Yes
15	Primary Bedroom	14'11" x 21'2"	315 sq. ft	Yes
16	Living Room	12'11" x 22'7"	292 sq. ft	Yes
17	Kitchen	14'2" x 18'3"	258 sq. ft	Yes
18	Breakfast Nook	12'0" x 10'2"	122 sq. ft	Yes
19	Bedroom	10'7" x 12'7"	133 sq. ft	Yes
20	W.I.C.	6'10" x 3'5"	23 sq. ft	Yes
21	Bedroom	10'7" x 11'10"	125 sq. ft	Yes
22	Dining Room	12'10" x 17'5"	224 sq. ft	Yes
23	OFFICE/FLEX Room	13'0" x 13'8"	179 sq. ft	Yes
24	Laundry	5'7" x 8'2"	46 sq. ft	Yes
25	Primary Bath	12'0" x 20'4"	244 sq. ft	Yes
26	Screened Porch	37'2" x 31'9"	1178 sq. ft	No

8843 Torchwood Drive, Trinity, Pasco County, Florida, United States, 34655

1 Floor 1 - Pantry



Dimensions: 5'5" x 5'2"
Area: 28 sq. ft
Counted as living area: Yes

Heated: Yes
Finished: Yes
Enclosed: Yes
Contiguous: Yes
Permitted: Yes
Wet space: No
Addition: No
Conversion: No

2 Floor 1 - Garage



Dimensions: 27'0" x 21'1"
Area: 571 sq. ft
Counted as living area: No

Heated: No
Finished: Yes
Enclosed: Yes
Contiguous: Yes
Permitted: Yes
Wet space: No
Addition: No
Conversion: No

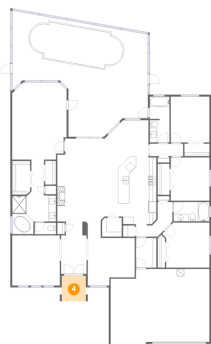
3 Floor 1 - W.I.C.



Dimensions: 3'3" x 8'6"
Area: 28 sq. ft
Counted as living area: Yes

Heated: Yes
Finished: Yes
Enclosed: Yes
Contiguous: Yes
Permitted: Yes
Wet space: No
Addition: No
Conversion: No

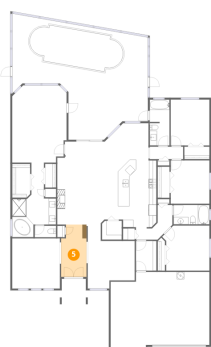
4 Floor 1 - Porch



Dimensions: 6'7" x 7'0"
Area: 46 sq. ft
Counted as living area: No

Heated: No
Finished: No
Enclosed: No
Contiguous: Yes
Permitted: Yes
Wet space: No
Addition: No
Conversion: No

5 Floor 1 - Foyer



Dimensions: 6'11" x 14'3"
Area: 99 sq. ft
Counted as living area: Yes

Heated: Yes
Finished: Yes
Enclosed: Yes
Contiguous: Yes
Permitted: Yes
Wet space: No
Addition: No
Conversion: No

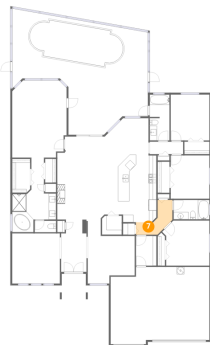
6 Floor 1 - Bath



Dimensions: 5'10" x 3'1"
Area: 18 sq. ft
Counted as living area: Yes

Heated: Yes
Finished: Yes
Enclosed: Yes
Contiguous: Yes
Permitted: Yes
Wet space: No
Addition: No
Conversion: No

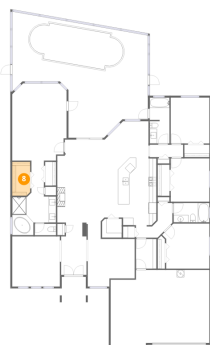
7 Floor 1 - Hall



Dimensions: 8'10" x 8'9"
Area: 77 sq. ft
Counted as living area: Yes

Heated: Yes
Finished: Yes
Enclosed: Yes
Contiguous: Yes
Permitted: Yes
Wet space: No
Addition: No
Conversion: No

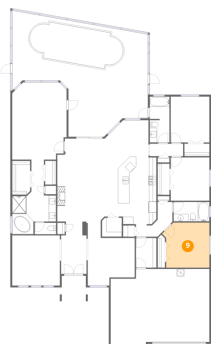
8 Floor 1 - W.I.C.



Dimensions: 4'11" x 9'3"
Area: 45 sq. ft
Counted as living area: Yes

Heated: Yes
Finished: Yes
Enclosed: Yes
Contiguous: Yes
Permitted: Yes
Wet space: No
Addition: No
Conversion: No

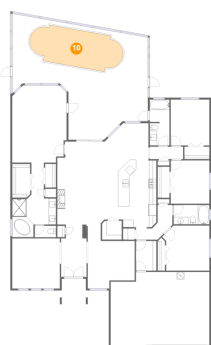
9 Floor 1 - Bedroom



Dimensions: 12'11" x 12'4"
Area: 159 sq. ft
Counted as living area: Yes

Heated: Yes
Finished: Yes
Enclosed: Yes
Contiguous: Yes
Permitted: Yes
Wet space: No
Addition: No
Conversion: No

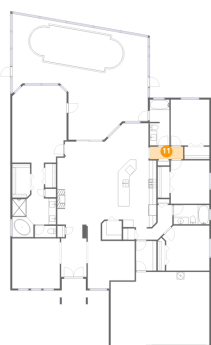
10 Floor 1 - Swimming Pool



Dimensions: 25'11" x 9'11"
Area: 258 sq. ft
Counted as living area: No

Heated: No
Finished: No
Enclosed: No
Contiguous: Yes
Permitted: No
Wet space: No
Addition: No
Conversion: No

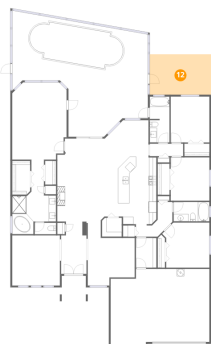
11 Floor 1 - Hall



Dimensions: 9'2" x 3'5"
Area: 31 sq. ft
Counted as living area: Yes

Heated: Yes
Finished: Yes
Enclosed: Yes
Contiguous: Yes
Permitted: Yes
Wet space: No
Addition: No
Conversion: No

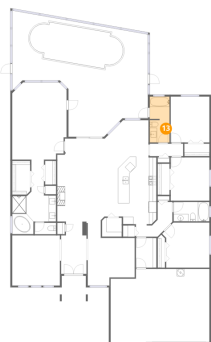
12 Floor 1 - Patio



Dimensions: 16'10" x 11'0"
Area: 186 sq. ft
Counted as living area: No

Heated: No
Finished: No
Enclosed: No
Contiguous: Yes
Permitted: Yes
Wet space: No
Addition: No
Conversion: No

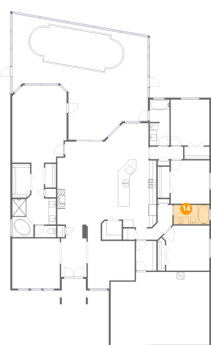
13 Floor 1 - Bath



Dimensions: 5'5" x 12'7"
Area: 68 sq. ft
Counted as living area: Yes

Heated: Yes
Finished: Yes
Enclosed: Yes
Contiguous: Yes
Permitted: Yes
Wet space: Yes
Addition: No
Conversion: No

14 Floor 1 - Bath

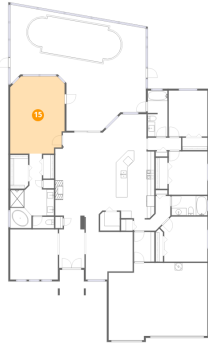


Dimensions: 9'10" x 5'4"
Area: 52 sq. ft
Counted as living area: Yes

Heated: Yes
Finished: Yes
Enclosed: Yes
Contiguous: Yes
Permitted: Yes
Wet space: Yes
Addition: No
Conversion: No

8843 Torchwood Drive, Trinity, Pasco County, Florida, United States, 34655

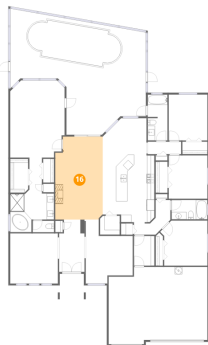
15 Floor 1 - Primary Bedroom



Dimensions: 14'11" x 21'2"
Area: 315 sq. ft
Counted as living area: Yes

Heated: Yes
Finished: Yes
Enclosed: Yes
Contiguous: Yes
Permitted: Yes
Wet space: No
Addition: No
Conversion: No

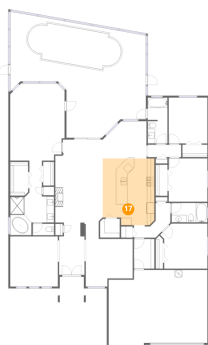
16 Floor 1 - Living Room



Dimensions: 12'11" x 22'7"
Area: 292 sq. ft
Counted as living area: Yes

Heated: Yes
Finished: Yes
Enclosed: Yes
Contiguous: Yes
Permitted: Yes
Wet space: No
Addition: No
Conversion: No

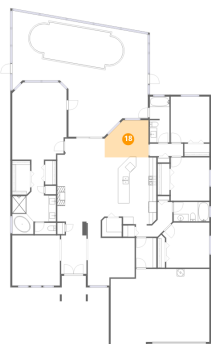
17 Floor 1 - Kitchen



Dimensions: 14'2" x 18'3"
Area: 258 sq. ft
Counted as living area: Yes

Heated: Yes
Finished: Yes
Enclosed: Yes
Contiguous: Yes
Permitted: Yes
Wet space: No
Addition: No
Conversion: No

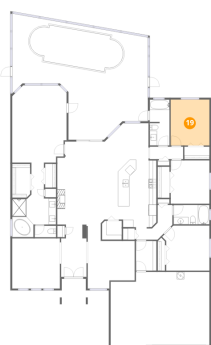
18 Floor 1 - Breakfast Nook



Dimensions: 12'0" x 10'2"
Area: 122 sq. ft
Counted as living area: Yes

Heated: Yes
Finished: Yes
Enclosed: Yes
Contiguous: Yes
Permitted: Yes
Wet space: No
Addition: No
Conversion: No

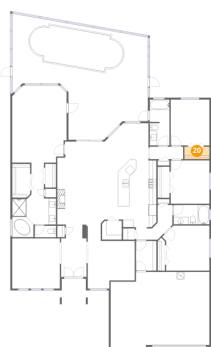
19 Floor 1 - Bedroom



Dimensions: 10'7" x 12'7"
Area: 133 sq. ft
Counted as living area: Yes

Heated: Yes
Finished: Yes
Enclosed: Yes
Contiguous: Yes
Permitted: Yes
Wet space: No
Addition: No
Conversion: No

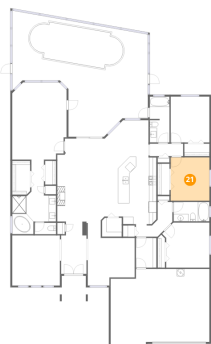
20 Floor 1 - W.I.C.



Dimensions: 6'10" x 3'5"
Area: 23 sq. ft
Counted as living area: Yes

Heated: Yes
Finished: Yes
Enclosed: Yes
Contiguous: Yes
Permitted: Yes
Wet space: No
Addition: No
Conversion: No

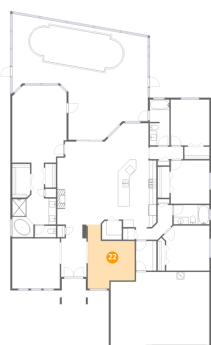
21 Floor 1 - Bedroom



Dimensions: 10'7" x 11'10"
Area: 125 sq. ft
Counted as living area: Yes

Heated: Yes
Finished: Yes
Enclosed: Yes
Contiguous: Yes
Permitted: Yes
Wet space: No
Addition: No
Conversion: No

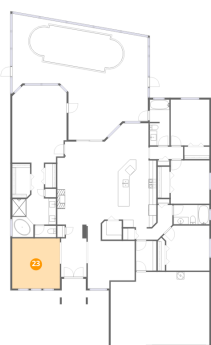
22 Floor 1 - Dining Room



Dimensions: 12'10" x 17'5"
Area: 224 sq. ft
Counted as living area: Yes

Heated: Yes
Finished: Yes
Enclosed: Yes
Contiguous: Yes
Permitted: Yes
Wet space: No
Addition: No
Conversion: No

23 Floor 1 - OFFICE/FLEX Room



Dimensions: 13'0" x 13'8"
Area: 179 sq. ft
Counted as living area: Yes

Heated: Yes
Finished: Yes
Enclosed: Yes
Contiguous: Yes
Permitted: Yes
Wet space: No
Addition: No
Conversion: No

8843 Torchwood Drive, Trinity, Pasco County, Florida, United States, 34655

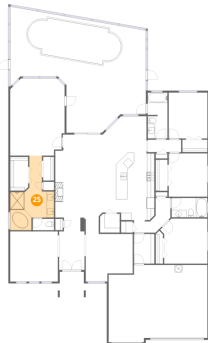
24 Floor 1 - Laundry



Dimensions: 5'7" x 8'2"
Area: 46 sq. ft
Counted as living area: Yes

Heated: Yes
Finished: Yes
Enclosed: Yes
Contiguous: Yes
Permitted: Yes
Wet space: No
Addition: No
Conversion: No

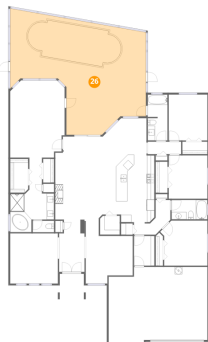
25 Floor 1 - Primary Bath



Dimensions: 12'0" x 20'4"
Area: 244 sq. ft
Counted as living area: Yes

Heated: Yes
Finished: Yes
Enclosed: Yes
Contiguous: Yes
Permitted: Yes
Wet space: Yes
Addition: No
Conversion: No

26 Floor 1 - Screened Porch



Dimensions: 37'2" x 31'9"
Area: 1178 sq. ft
Counted as living area: No

Heated: No
Finished: No
Enclosed: No
Contiguous: Yes
Permitted: Yes
Wet space: No
Addition: No
Conversion: No