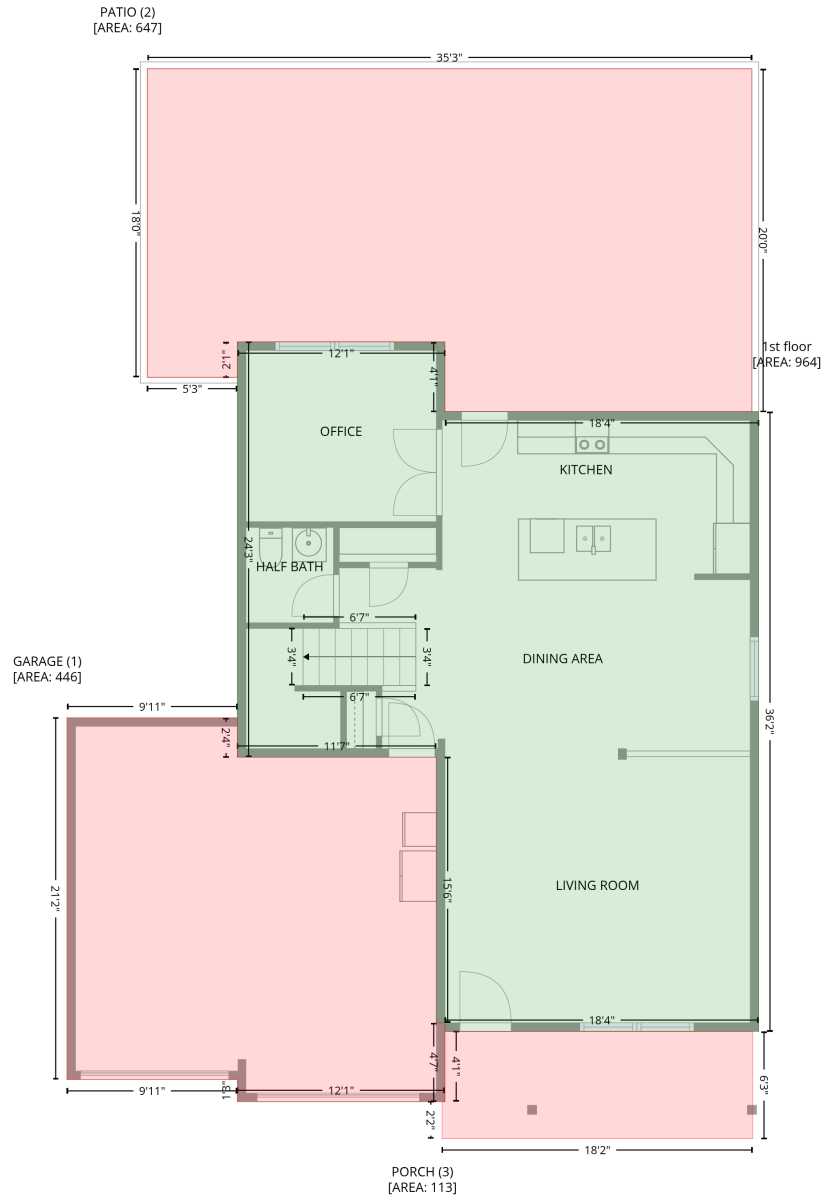


118 Fairfield Drive, Troutman, Iredell County, North Carolina, United States, 28166

Gross Living Area: 2087 sq. ft

Level 1



Space	Area (sq. ft)	Calculation
1st floor (Living area)	964	Coordinate Polygon Area Algorithm using inches $-((299.2 + 299.2) * (233 - 281.9) + (299.2 + 518.9) * (281.9 - 281.9) + (518.9 + 518.9) * (281.9 - 716.2) + (518.9 + 299.2) * (716.2 - 716.2) + (299.2 + 299.2) * (716.2 - 710.2) + (299.2 + 293.2) * (710.2 - 710.2) + (293.2 + 293.2) * (710.2 - 524.1) + (293.2 + 153.8) * (524.1 - 524.1) + (153.8 + 153.8) * (524.1 - 233) + (153.8 + 299.2) * (233 - 233)) * 0.5 * 0.00694$

118 Fairfield Drive, Troutman, Iredell County, North Carolina, United States, 28166

Gross Living Area: 2087 sq. ft

Level 1

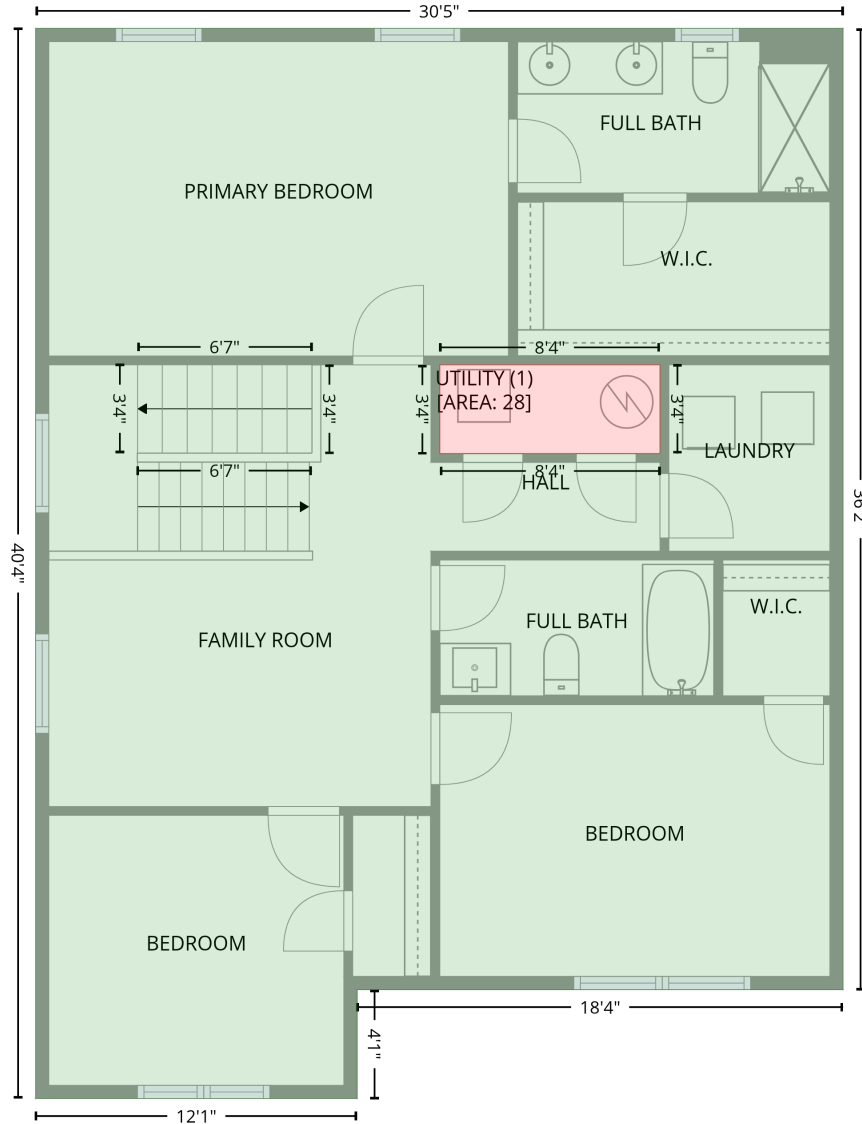
Space	Area (sq. ft)	Calculation <small>Coordinate Polygon Area Algorithm using inches</small>
GARAGE (Non-living area)	446	$-\left((153.8 + 153.8) * (496.4 - 524.1) + (153.8 + 293.2) * (524.1 - 524.1) + (293.2 + 293.2) * (524.1 - 710.2) + (293.2 + 299.2) * (710.2 - 710.2) + (299.2 + 299.2) * (710.2 - 765.4) + (299.2 + 153.8) * (765.4 - 765.4) + (153.8 + 153.8) * (765.4 - 750.1) + (153.8 + 34.5) * (750.1 - 750.1) + (34.5 + 34.5) * (750.1 - 496.4) + (34.5 + 153.8) * (496.4 - 496.4)\right) * 0.5 * 0.00694$
PATIO (Non-living area)	647	$-\left((514.1 + 514.1) * (41.6 - 281.9) + (514.1 + 299.2) * (281.9 - 281.9) + (299.2 + 299.2) * (281.9 - 233) + (299.2 + 153.8) * (233 - 233) + (153.8 + 153.8) * (233 - 257.9) + (153.8 + 90.7) * (257.9 - 257.9) + (90.7 + 90.7) * (257.9 - 41.6) + (90.7 + 514.1) * (41.6 - 41.6)\right) * 0.5 * 0.00694$
PORCH (Non-living area)	113	$-\left((514.7 + 514.7) * (716.2 - 791.5) + (514.7 + 297.2) * (791.5 - 791.5) + (297.2 + 297.2) * (791.5 - 765.4) + (297.2 + 299.2) * (765.4 - 765.4) + (299.2 + 299.2) * (765.4 - 716.2) + (299.2 + 514.7) * (716.2 - 716.2)\right) * 0.5 * 0.00694$

118 Fairfield Drive, Troutman, Iredell County, North Carolina, United States, 28166

Gross Living Area: 2087 sq. ft

Level 2

2nd floor
[AREA: 1123]



Space	Area (sq. ft)	Calculation
2nd floor (Living area)	1123	Coordinate Polygon Area Algorithm using inches $-((518.9 + 518.9) * (281.9 - 716.2) + (518.9 + 299.2) * (716.2 - 716.2) + (299.2 + 299.2) * (716.2 - 765.4) + (299.2 + 153.8) * (765.4 - 765.4) + (153.8 + 153.8) * (765.4 - 281.9) + (153.8 + 518.9) * (281.9 - 281.9)) * 0.5 * 0.00694 + -((436.1 + 336.5) * (433.9 - 433.9) + (336.5 + 336.5) * (433.9 - 474) + (336.5 + 436.1) * (474 - 474) + (436.1 + 436.1) * (474 - 433.9)) * 0.5 * 0.00694$
UTILITY (Non-living area)	28	$-((436.1 + 436.1) * (433.9 - 474) + (436.1 + 336.5) * (474 - 474) + (336.5 + 336.5) * (474 - 433.9) + (336.5 + 436.1) * (433.9 - 433.9)) * 0.5 * 0.00694$