

Home data report

568 Shryer Ave W, Roseville, MN, US



Total Area: 2056 sq. ft

Basement: 666 sq. ft, 1st Floor: 1056 sq. ft, 2nd Floor: 334 sq. ft

Excluded: Storage 28 sq. ft, Utility 115 sq. ft, Patio 185 sq. ft, Carport 362 sq. ft, Garage 239 sq. ft, Attic 50 sq. ft, Walls: 226 sq. ft

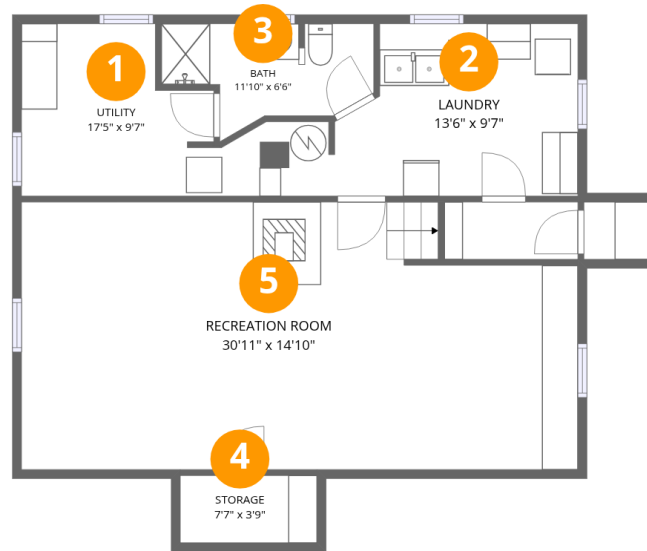
Property summary

3 Floors

2 Bedrooms

2 Bathrooms

1 Garages



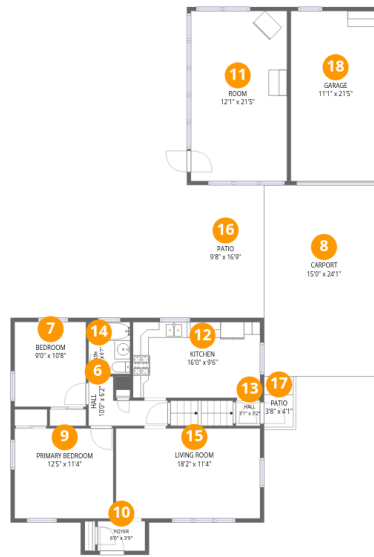
Room dimensions

Floor 1 Below grade

Total:666sqft

Excluded: 143sqft

#		Dimensions	sqft	Counted as living area
1	Utility	17'5" x 9'7"	115 sq. ft	No
2	Laundry	13'6" x 9'7"	118 sq. ft	Yes
3	Bath	11'10" x 6'6"	55 sq. ft	Yes
4	Storage	7'7" x 3'9"	28 sq. ft	No
5	Recreation Room	30'11" x 14'10"	432 sq. ft	Yes



Room dimensions

Floor 2

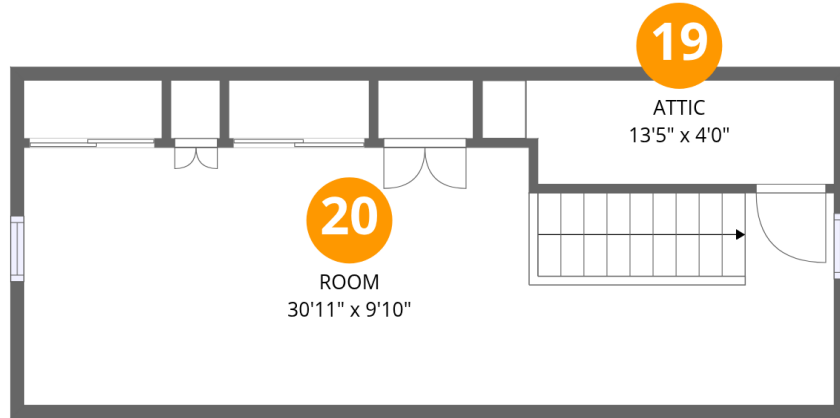
Total: 1056sqft Excluded: 786sqft

#		Dimensions	sqft	Counted as living area
6	Hall	10'0" x 6'2"	41 sq. ft	Yes
7	Bedroom	9'0" x 10'8"	96 sq. ft	Yes
8	Carport	15'0" x 24'1"	362 sq. ft	No
9	Primary Bedroom	12'5" x 11'4"	141 sq. ft	Yes
10	Foyer	6'0" x 3'9"	22 sq. ft	Yes
11	Room	12'1" x 21'5"	259 sq. ft	Yes
12	Kitchen	16'0" x 9'6"	153 sq. ft	Yes
13	Hall	3'1" x 3'2"	10 sq. ft	Yes
14	Bath	5'3" x 6'7"	34 sq. ft	Yes
15	Living Room	18'2" x 11'4"	206 sq. ft	Yes
16	Patio	9'8" x 16'9"	162 sq. ft	No

Home data report

568 Shryer Ave W,Roseville,MN,US

#		Dimensions	sqft	Counted as living area
17	Patio	3'8" x 4'1"	23 sq. ft	No
18	Garage	11'1" x 21'5"	239 sq. ft	No



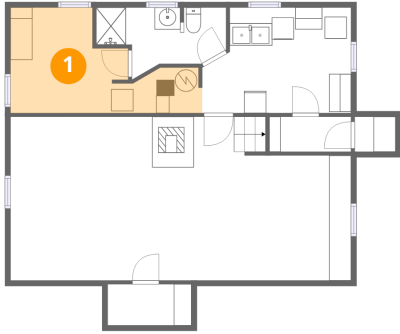
Room dimensions

Floor 3

Total:334sqft Excluded: 50sqft

#		Dimensions	sqft	Counted as living area
19	Attic	13'5" x 4'0"	50 sq. ft	No
20	Room	30'11" x 9'10"	284 sq. ft	Yes

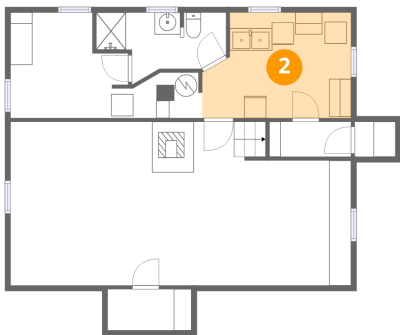
1 Floor 1 - Utility



Dimensions: 17'5" x 9'7"
Area: 115 sq. ft
Counted as living area: No

Heated: Yes
Finished: No
Enclosed: Yes
Contiguous: Yes
Permitted: Yes
Wet space: No
Addition: No
Conversion: No

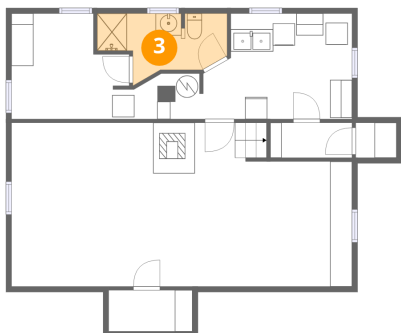
2 Floor 1 - Laundry



Dimensions: 13'6" x 9'7"
Area: 118 sq. ft
Counted as living area: Yes

Heated: Yes
Finished: Yes
Enclosed: Yes
Contiguous: Yes
Permitted: Yes
Wet space: No
Addition: No
Conversion: No

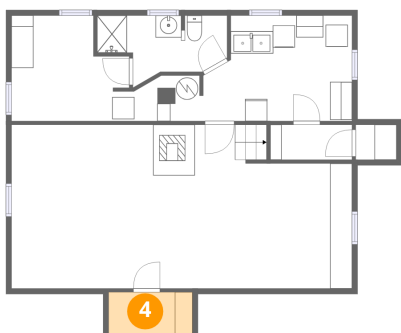
3 Floor 1 - Bath



Dimensions: 11'10" x 6'6"
Area: 55 sq. ft
Counted as living area: Yes

Heated: Yes
Finished: Yes
Enclosed: Yes
Contiguous: Yes
Permitted: Yes
Wet space: Yes
Addition: No
Conversion: No

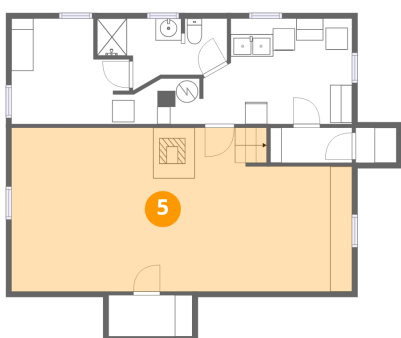
4 Floor 1 - Storage



Dimensions: 7'7" x 3'9"
Area: 28 sq. ft
Counted as living area: No

Heated: No
Finished: No
Enclosed: No
Contiguous: Yes
Permitted: Yes
Wet space: No
Addition: No
Conversion: No

5 Floor 1 - Recreation Room



Dimensions: 30'11" x 14'10"
Area: 432 sq. ft
Counted as living area: Yes

Heated: Yes
Finished: Yes
Enclosed: Yes
Contiguous: Yes
Permitted: Yes
Wet space: No
Addition: No
Conversion: No

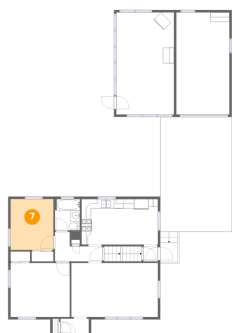
6 Floor 2 - Hall



Dimensions: 10'0" x 6'2"
Area: 41 sq. ft
Counted as living area: Yes

Heated: Yes
Finished: Yes
Enclosed: Yes
Contiguous: Yes
Permitted: Yes
Wet space: No
Addition: No
Conversion: No

7 Floor 2 - Bedroom



Dimensions: 9'0" x 10'8"
Area: 96 sq. ft
Counted as living area: Yes

Heated: Yes
Finished: Yes
Enclosed: Yes
Contiguous: Yes
Permitted: Yes
Wet space: No
Addition: No
Conversion: No

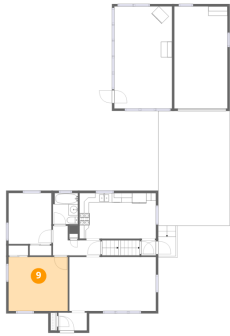
8 Floor 2 - Carport



Dimensions: 15'0" x 24'1"
Area: 362 sq. ft
Counted as living area: No

Heated: No
Finished: Yes
Enclosed: No
Contiguous: Yes
Permitted: Yes
Wet space: No
Addition: No
Conversion: No

9 Floor 2 - Primary Bedroom



Dimensions: 12'5" x 11'4"
Area: 141 sq. ft
Counted as living area: Yes

Heated: Yes
Finished: Yes
Enclosed: Yes
Contiguous: Yes
Permitted: Yes
Wet space: No
Addition: No
Conversion: No

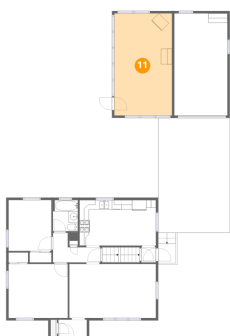
10 Floor 2 - Foyer



Dimensions: 6'0" x 3'9"
Area: 22 sq. ft
Counted as living area: Yes

Heated: Yes
Finished: Yes
Enclosed: Yes
Contiguous: Yes
Permitted: Yes
Wet space: No
Addition: No
Conversion: No

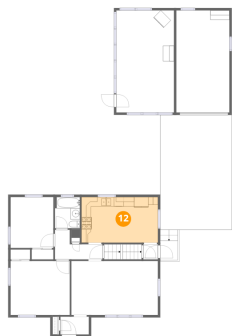
11 Floor 2 - Room



Dimensions: 12'1" x 21'5"
Area: 259 sq. ft
Counted as living area: Yes

Heated: Yes
Finished: Yes
Enclosed: Yes
Contiguous: Yes
Permitted: Yes
Wet space: No
Addition: No
Conversion: No

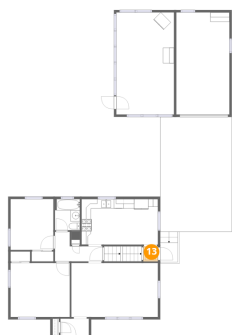
12 Floor 2 - Kitchen



Dimensions: 16'0" x 9'6"
Area: 153 sq. ft
Counted as living area: Yes

Heated: Yes
Finished: Yes
Enclosed: Yes
Contiguous: Yes
Permitted: Yes
Wet space: No
Addition: No
Conversion: No

13 Floor 2 - Hall



Dimensions: 3'1" x 3'2"
Area: 10 sq. ft
Counted as living area: Yes

Heated: Yes
Finished: Yes
Enclosed: Yes
Contiguous: Yes
Permitted: Yes
Wet space: No
Addition: No
Conversion: No

14 Floor 2 - Bath



Dimensions: 5'3" x 6'7"
Area: 34 sq. ft
Counted as living area: Yes

Heated: Yes
Finished: Yes
Enclosed: Yes
Contiguous: Yes
Permitted: Yes
Wet space: Yes
Addition: No
Conversion: No

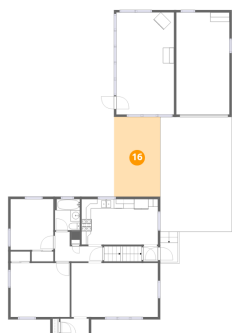
15 Floor 2 - Living Room



Dimensions: 18'2" x 11'4"
Area: 206 sq. ft
Counted as living area: Yes

Heated: Yes
Finished: Yes
Enclosed: Yes
Contiguous: Yes
Permitted: Yes
Wet space: No
Addition: No
Conversion: No

16 Floor 2 - Patio



Dimensions: 9'8" x 16'9"
Area: 162 sq. ft
Counted as living area: No

Heated: No
Finished: No
Enclosed: No
Contiguous: Yes
Permitted: Yes
Wet space: No
Addition: No
Conversion: No

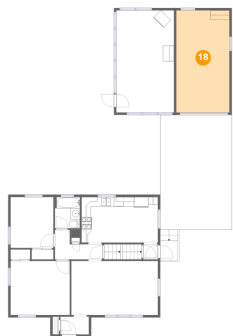
17 Floor 2 - Patio



Dimensions: 3'8" x 4'1"
Area: 23 sq. ft
Counted as living area: No

Heated: No
Finished: No
Enclosed: No
Contiguous: Yes
Permitted: Yes
Wet space: No
Addition: No
Conversion: No

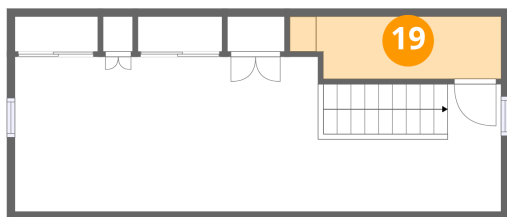
18 Floor 2 - Garage



Dimensions: 11'1" x 21'5"
Area: 239 sq. ft
Counted as living area: No

Heated: No
Finished: No
Enclosed: Yes
Contiguous: Yes
Permitted: Yes
Wet space: No
Addition: No
Conversion: No

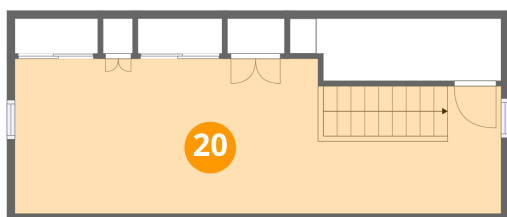
19 Floor 3 - Attic



Dimensions: 13'5" x 4'0"
Area: 50 sq. ft
Counted as living area: No

Heated: No
Finished: No
Enclosed: Yes
Contiguous: Yes
Permitted: Yes
Wet space: No
Addition: No
Conversion: No

20 Floor 3 - Room



Dimensions: 30'11" x 9'10"
Area: 284 sq. ft
Counted as living area: Yes

Heated: Yes
Finished: Yes
Enclosed: Yes
Contiguous: Yes
Permitted: Yes
Wet space: No
Addition: No
Conversion: No